

Todd Energy Aquatic Centre  
Monitoring Programme  
Annual Report  
2018-2019

Technical Report 2019-19

ISSN: 1178-1467 (Online)  
Document: 2294253 (Word)  
Document: 2296446 (Pdf)

Taranaki Regional Council  
Private Bag 713  
STRATFORD  
September 2019



## Executive summary

The New Plymouth District Council (NPDC) operates the Todd Energy Aquatic Centre (the Aquatic Centre) located on Tisch Avenue, New Plymouth. Wastewater from backwashing the water filtration system and emptying the outdoor pools is discharged from the ocean outfall situated on the Kawaroa Reef foreshore, to the east of the facility. This report for the period July 2018 to June 2019 describes the monitoring programme implemented by the Taranaki Regional Council (the Council) to assess NPDC's environmental and consent compliance performance during the period under review. The report also details the results of the monitoring undertaken and assesses the environmental effects of NPDC's activities.

NPDC holds two resource consents relating to the Aquatic Centre, which include a total of 13 special conditions setting out the requirements that NPDC must satisfy. NPDC holds one consent to allow them to discharge swimming pool wastewater into the Tasman Sea, and one consent to erect, place, use and maintain an ocean outfall at the site.

### **During the monitoring period, NPDC demonstrated an overall high level of environmental performance.**

The Council's monitoring programme for the year under review included one site inspection, two marine ecological inspections, and routine physicochemical sampling of the backwash discharge, outdoor pool water and receiving waters.

The monitoring showed that the backwash and outdoor pool wastewater discharges were compliant with consent conditions. Neither of the discharges appeared to have any significant effects on the ecology of the Kawaroa Reef outside of the designated mixing zone. By comparison with previous years, the monitoring indicated an improvement in NPDC's environmental performance. There were no Unauthorised Incidents recording non-compliance in respect of this consent holder during the period under review.

During the year, NPDC demonstrated a high level of environmental and administrative performance with the resource consents.

For reference, in the 2018-2019 year, consent holders were found to achieve a high level of environmental performance and compliance for 83% of the consents monitored through the Taranaki tailored monitoring programmes, while for another 13% of the consents, a good level of environmental performance and compliance was achieved.

In terms of overall environmental and compliance performance by the consent holder over the last several years, this report shows that the consent holder's performance is improving.

This report includes recommendations for the 2019-2020 year.

## Table of contents

	Page	
1	Introduction	1
1.1	Compliance monitoring programme reports and the Resource Management Act 1991	1
1.1.1	Introduction	1
1.1.2	Structure of this report	1
1.1.3	The Resource Management Act 1991 and monitoring	1
1.1.4	Evaluation of environmental and administrative performance	2
1.2	Process description	3
1.3	Resource consents	5
1.4	Monitoring programme	6
1.4.1	Introduction	6
1.4.2	Programme liaison and management	6
1.4.3	Site inspections	6
1.4.4	Chemical sampling	6
1.4.5	Marine ecological inspections	7
2	Results	8
2.1	Inspection	8
2.2	Discharge monitoring	9
2.2.1	Backwash discharge	9
2.2.2	Emptying of the outdoor pool	10
2.3	Marine ecological inspections	10
2.4	Incidents, investigations, and interventions	11
3	Discussion	12
3.1	Discussion of site performance	12
3.2	Environmental effects of exercise of consents	12
3.3	Evaluation of performance	12
3.4	Recommendations from the 2017-2018 Annual Report	14
3.5	Alterations to monitoring programmes for 2019-2020	14
3.6	Exercise of optional review of consent	15
4	Recommendations	16
	Glossary of common terms and abbreviations	17
	Bibliography and references	18
	Appendix I Resource consents held by NPDC	

Appendix II Marine ecological inspection 12 February 2019

Appendix III Marine ecological inspection 6 May 2019

## List of tables

Table 1	Resource consents held by NPDC in relation to wastewater discharges to the marine environment from the Aquatic Centre	6
Table 2	Water quality results of the backwash discharge and receiving seawater samples (12 February 2019)	9
Table 3	Water quality results of outdoor pool water and receiving seawater samples (6 May 2019)	10
Table 4	Summary of performance for consent 2339-4.0	12
Table 5	Summary of performance for consent 4588-3.0	13
Table 6	Evaluation of environmental performance over time	13

## List of figures

Figure 1	Location of the Aquatic Centre	4
Figure 2	Maintenance shed, showing A) chemicals stored on pallets and B) chemical solids on floor of shed (6 May 2019)	8
Figure 3	Surface cracks along ocean outfall, on A) 15 June 2017 and B) 6 May 2019, indicating little change in structural integrity. A close-up of the end of the pipe, also taken 6 May 2019, is shown in C).	9

## List of photos

Photo 1	Aquatic Centre ocean outfall	4
---------	------------------------------	---



# 1 Introduction

## 1.1 Compliance monitoring programme reports and the Resource Management Act 1991

### 1.1.1 Introduction

This report is for the period July 2018 to June 2019 by the Taranaki Regional Council (the Council) describing the monitoring programme associated with resource consents held by New Plymouth District Council (NPDC). NPDC operates the Todd Energy Aquatic Centre (the Aquatic Centre) situated on Tisch Avenue in New Plymouth.

This report covers the results and findings of the monitoring programme implemented by the Council in respect of the consents held by NPDC that relate to discharges of filter backwash and outdoor pool wastewater into the Tasman Sea and to erect, place, use and maintain an ocean outfall. This is the 19<sup>th</sup> annual report to be prepared by the Council to cover NPDC's water discharges and their effects.

### 1.1.2 Structure of this report

**Section 1** of this report is a background section. It sets out general information about:

- consent compliance monitoring under the *Resource Management Act 1991* (RMA) and the Council's obligations;
- the Council's approach to monitoring sites through annual programmes;
- the resource consents held by NPDC for the Aquatic Centre;
- the nature of the monitoring programme in place for the period under review; and
- a description of the activities and operations conducted at the Aquatic Centre.

**Section 2** presents the results of monitoring during the period under review, including scientific and technical data.

**Section 3** discusses the results, their interpretations, and their significance for the environment.

**Section 4** presents recommendations to be implemented in the 2019-2020 monitoring year.

A glossary of common abbreviations and scientific terms, and a bibliography, are presented at the end of the report.

### 1.1.3 The Resource Management Act 1991 and monitoring

The RMA primarily addresses environmental 'effects' which are defined as positive or adverse, temporary or permanent, past, present or future, or cumulative. Effects may arise in relation to:

- a. the neighbourhood or the wider community around an activity, and may include cultural and social-economic effects;
- b. physical effects on the locality, including landscape, amenity and visual effects;
- c. ecosystems, including effects on plants, animals, or habitats, whether aquatic or terrestrial;
- d. natural and physical resources having special significance (for example recreational, cultural, or aesthetic); and
- e. risks to the neighbourhood or environment.

In drafting and reviewing conditions on discharge permits, and in implementing monitoring programmes, the Council is recognising the comprehensive meaning of 'effects' inasmuch as is appropriate for each

activity. Monitoring programmes are not only based on existing permit conditions, but also on the obligations of the RMA to assess the effects of the exercise of consents. In accordance with Section 35 of the RMA, the Council undertakes compliance monitoring for consents and rules in regional plans, and maintains an overview of the performance of resource users and consent holders. Compliance monitoring, including both activity and impact monitoring, enables the Council to continually re-evaluate its approach and that of consent holders to resource management and, ultimately, through the refinement of methods and considered responsible resource utilisation, to move closer to achieving sustainable development of the region's resources.

#### 1.1.4 Evaluation of environmental and administrative performance

Besides discussing the various details of the performance and extent of compliance by NPDC, this report also assigns them a rating for their environmental and administrative performance during the period under review.

Environmental performance is concerned with actual or likely effects on the receiving environment from the activities during the monitoring year. Administrative performance is concerned with NPDC's approach to demonstrating consent compliance in site operations and management including the timely provision of information to Council (such as contingency plans and water take data) in accordance with consent conditions.

Events that were beyond the control of the consent holder and unforeseeable (that is a defence under the provisions of the RMA can be established) may be excluded with regard to the performance rating applied. For example loss of data due to a flood destroying deployed field equipment.

The categories used by the Council for this monitoring period, and their interpretation, are as follows:

##### Environmental Performance

**High:** No or inconsequential (short-term duration, less than minor in severity) breaches of consent or regional plan parameters resulting from the activity; no adverse effects of significance noted or likely in the receiving environment. The Council did not record any verified unauthorised incidents involving significant environmental impacts and was not obliged to issue any abatement notices or infringement notices in relation to such impacts.

**Good:** Likely or actual adverse effects of activities on the receiving environment were negligible or minor at most. There were some such issues noted during monitoring, from self reports, or in response to unauthorised incident reports, but these items were not critical, and follow-up inspections showed they have been dealt with. These minor issues were resolved positively, co-operatively, and quickly. The Council was not obliged to issue any abatement notices or infringement notices in relation to the minor non-compliant effects; however abatement notices may have been issued to mitigate an identified potential for an environmental effect to occur.

For example:

- High suspended solid values recorded in discharge samples, however the discharge was to land or to receiving waters that were in high flow at the time;
- Strong odour beyond boundary but no residential properties or other recipient nearby.

**Improvement required:** Likely or actual adverse effects of activities on the receiving environment were more than minor, but not substantial. There were some issues noted during monitoring, from self reports, or in response to unauthorised incident reports. Cumulative adverse effects of a persistent minor non-compliant activity could elevate a minor issue to this level. Abatement notices and infringement notices may have been issued in respect of effects.



**Poor:** Likely or actual adverse effects of activities on the receiving environment were significant. There were some items noted during monitoring, from self reports, or in response to unauthorised incident reports. Cumulative adverse effects of a persistent moderate non-compliant activity could elevate an 'improvement required' issue to this level. Typically there were grounds for either a prosecution or an infringement notice in respect of effects.

#### Administrative performance

**High:** The administrative requirements of the resource consents were met, or any failure to do this had trivial consequences and were addressed promptly and co-operatively.

**Good:** Perhaps some administrative requirements of the resource consents were not met at a particular time, however this was addressed without repeated interventions from the Council staff. Alternatively adequate reason was provided for matters such as the no or late provision of information, interpretation of 'best practical option' for avoiding potential effects, etc.

**Improvement required:** Repeated interventions to meet the administrative requirements of the resource consents were made by Council staff. These matters took some time to resolve, or remained unresolved at the end of the period under review. The Council may have issued an abatement notice to attain compliance.

**Poor:** Material failings to meet the administrative requirements of the resource consents. Significant intervention by the Council was required. Typically there were grounds for an infringement notice.

For reference, in the 2018-2019 year, consent holders were found to achieve a high level of environmental performance and compliance for 83% of the consents monitored through the Taranaki tailored monitoring programmes, while for another 13% of the consents, a good level of environmental performance and compliance was achieved.<sup>1</sup>

## 1.2 Process description

The Aquatic Centre is sited on the foreshore at Tisch Avenue, New Plymouth. The facility consists of outdoor pools (including a main pool, diving pool and children's pools) and an indoor pool complex (Figure 1).

Discharge of wastewater from the outdoor pool complex filtration system takes place via the original ocean outfall which is situated on the foreshore to the east of the facility (Photo 1).

The ocean outfall consists of a 300 mm diameter encased concrete pipe that discharges at approximately mid-tide level. This structure was constructed in 1962 and has been in use ever since for the purpose of backwashing the outdoor pool filters.

---

<sup>1</sup> The Council has used these compliance grading criteria for 15 years. They align closely with the 4 compliance grades in the MfE Best Practice Guidelines for Compliance, Monitoring and Enforcement, 2018



Figure 1 Location of the Aquatic Centre



Photo 1 Aquatic Centre ocean outfall

During 1993 a heated indoor aquatic centre was constructed next to the existing outdoor facility. The indoor facility consists of a main pool, children's pool and spa pool. The indoor facility has a diatomaceous earth filter which serves the main pool and four upright high pressure sand filters which serve the spa and the children's pools.

At the time of construction, the diatomaceous earth filter waste was discharged into coastal waters. This method was found to be environmentally unsatisfactory and was discontinued in late 1999. Ever since, the solid waste from the diatomaceous earth filter has been removed from the site using an effluent disposal contractor, and disposed of at the New Plymouth landfill.

In 1999, a gas-fired heating system was installed to replace the original 'water to water' heat exchange unit which relied on sea water as the source of heat. The old heat exchange unit was removed from the site when the gas-fired unit was commissioned.

Current wastewater management practice for the indoor pools is that backwash water from the spa and children's pools' sand filtration systems continues to be connected to the outfall and is discharged on a daily basis.

The amount of water discharged is equivalent to approximately 120 litres per minute and the total backwash cycle runs for around 5-10 minutes. The maximum volume of the discharge at 1,200 litres is relatively insignificant in the context of the receiving environment, and the visual change is virtually inconspicuous due to the indoor nature of the pools and the frequency of backwashing, which is daily.

The outdoor pools are served by two large open gravity sand filters, which are located at the eastern end of the outdoor complex. These are air scoured and then backwashed through the outfall at high tide. Volumes of backwash water are significant (generally 22 m<sup>3</sup>) and the discharge can be a muddy colour for a short time. In the peak of the season, backwashes may be as frequent as 1-2 per week, but generally it is normal to backwash the outdoor pools approximately every two weeks during the summer season (from Labour weekend to Easter).

The outdoor pools are emptied once per year, generally at the start of May, for the purpose of cleaning and maintenance. The discharge of pool water is free of chlorine, as the pools are not in use for at least a week prior to discharge. The pools are cleaned by mechanical methods, including water blasting, and do not involve the use of chemical cleaners. Mutton cloths are placed over the drains during water blasting and cleaning to catch all loose paint chips. The pool cleanings are discharged via the outfall.

Both the indoor and outdoor complexes are chlorinated using chlorine gas, which is contained in two separate 920 kg cylinders and chlorinator systems; one at the eastern boundary and one at the western boundary of the site. From time to time the chlorine gas is complemented by the manual dosing of calcium or sodium hypochlorite.

During July 2004 a medium pressure UV disinfection system was installed at the Aquatic Centre. This has resulted in savings on chemical, heating, maintenance and water costs. The use of the UV system reduces the level of chloramines (combined chlorine compounds), which are the cause of the unpleasant chlorine smells in pools. Since the installation of the system the chlorine levels in the pool have decreased by 3 to 5 times to a level typically below 0.3 ppm. The water is also clearer and less milky, with bacterial levels dropping from low to nearly zero due to the water going through the UV system several times a day.

Alterations were undertaken on the indoor facility in 2008 with the construction of year-round waterslides.

### 1.3 Resource consents

NPDC holds two resource consents, the details of which are summarised in the table below. Summaries of the conditions attached to each permit are set out in Section 3 of this report.

A summary of the various consent types issued by the Council is included in Appendix I, as are copies of all permits held by NPDC in relation to the Aquatic Centre during the period under review.

**Table 1 Resource consents held by NPDC in relation to wastewater discharges to the marine environment from the Aquatic Centre**

Consent number	Purpose	Granted	Review	Expires
2339-4.0	To discharge public swimming pool wastewater and filter backwash wastewater via an ocean outfall into the Tasman Sea.	6 August 2014	June 2020, June 2026, and in accordance with special condition 10	1 June 2032
4588-3.0	To occupy the Coastal Marine Area with an ocean outfall from the New Plymouth Aquatic Centre.	6 August 2014	June 2020, June 2026	1 June 2032

## 1.4 Monitoring programme

### 1.4.1 Introduction

Section 35 of the RMA sets obligations upon the Council to gather information, monitor and conduct research on the exercise of resource consents within the Taranaki region. The Council is also required to assess the effects arising from the exercising of these consents and report upon them.

The Council may therefore make and record measurements of physical and chemical parameters, take samples for analysis, carry out surveys and inspections, conduct investigations and seek information from consent holders.

The monitoring programme for the Aquatic Centre consisted of four primary components.

### 1.4.2 Programme liaison and management

There is generally a significant investment of time and resources by the Council in:

- ongoing liaison with resource consent holders over consent conditions and their interpretation and application;
- in discussion over monitoring requirements;
- preparation for any consent reviews, renewals or new consent applications;
- advice on the Council's environmental management strategies and content of regional plans; and
- consultation on associated matters.

### 1.4.3 Site inspections

The Aquatic Centre was visited twice during the monitoring period. A site inspection was carried out during one of these visits, including an inspection of the maintenance shed and the ocean outfall. With regard to the consent for the discharge to water, the main points of interest were plant processes with potential or actual discharges to receiving watercourses, including contaminated stormwater and process wastewaters. The neighbourhood was surveyed for environmental effects.

### 1.4.4 Chemical sampling

The Council undertook sampling of both the discharges from the site and the water quality in the receiving environment.

Sampling occurred in conjunction with the emptying of the outdoor pool and with one backwash discharge. On both occasions, the collection of discharge samples was followed by the collection of seawater samples. All samples were analysed for chlorine, pH, oil and grease, and suspended solids.

#### 1.4.5 Marine ecological inspections

Inspections of the marine low tide biota around the vicinity of the ocean outfall were undertaken after a backwash discharge and the emptying of the outdoor pool, to assess compliance with condition 6(d) of the discharge permit.

## 2 Results

### 2.1 Inspection

An inspection of the maintenance shed was conducted on 6 May 2019. The shed was found to be mostly tidy, with all chemical sacks stored on pallets away from the door (Figure 2). However, some spilt chemical powder was noted on the floor of the shed, and was brought to the attention of the accompanying NPDC staff member (Figure 2).



Figure 2 Maintenance shed, showing A) chemicals stored on pallets and B) chemical solids on floor of shed (6 May 2019)

The ocean outfall was also inspected during the site visit and found to be compliant with consent conditions. Although the structural integrity of the ocean outfall has declined in recent years, the inspection indicated little change since a 2.4 m length of the structure dislodged in the 2016-2017 year (Figure 3).



Figure 3 Surface cracks along ocean outfall, on A) 15 June 2017 and B) 6 May 2019, indicating little change in structural integrity. A close-up of the end of the pipe, also taken 6 May 2019, is shown in C).

## 2.2 Discharge monitoring

### 2.2.1 Backwash discharge

A sample of backwash wastewater was collected on 12 February 2019. The backwash sample was collected from the discharge pipe in the maintenance shed. The seawater sample was collected from the shoreline approximately 5 m east of the outfall, 15 minutes later. The results of the backwash discharge sample are presented in Table 2.

Table 2 Water quality results of the backwash discharge and receiving seawater samples (12 February 2019)

Parameter	Unit	Backwash wastewater [STW001078]		5 m east of discharge ocean outfall [SEA902051]	
		Result	Consent limit	Result	Consent limit
Temperature	°C	28.1	-	24.8	-
Free chlorine	g/m <sup>3</sup>	0.53	-	<0.07	-
Total chlorine	g/m <sup>3</sup>	2.20	-	0.13	0.1
pH	pH	7.8	-	8.2	-
Suspended solids	g/m <sup>3</sup>	490	-	69	-
Oil and grease	g/m <sup>3</sup>	88	-	<4	-

The backwash discharge sample contained elevated concentrations of chlorine, oil and grease, and suspended solids (Table 2). Although considerably lower than the concentration of the backwash discharge

sample, the concentration of total chlorine in the shoreline sample was slightly above the consent limit of 0.1 g/m<sup>3</sup> (Table 2). However, it is possible that the actual value for total chlorine did in fact fall below the consent limit as the repeatability of the chlorine meter used is  $\pm 0.05$  g/m<sup>3</sup>; this result therefore provided insufficient evidence for non-compliance with condition 4 of consent 2339-4.0. The concentration of oil and grease in the shoreline sample was below the detection limit and the pH was within the typical range for seawater. The sample contained a high concentration of suspended solids, most likely attributed to the turbulent conditions of the high energy inshore waters along the coast. The sea did not appear discoloured or otherwise adversely affected by the discharge at the time the samples were taken.

Further details regarding sample collection can be found in Appendix II.

### 2.2.2 Emptying of the outdoor pool

A sample of outdoor pool wastewater was collected on Monday 6 May 2019, followed by a sample of the receiving seawater. The pool water sample was collected from the main pool directly. The seawater sample was collected from the shoreline approximately 5 m east of the outfall, 45 minutes later. The results of these samples are presented in Table 3.

Table 3 Water quality results of outdoor pool water and receiving seawater samples (6 May 2019)

Parameter	Unit	Outdoor pool wastewater [STW001079]		5 m east of ocean outfall [SEA902051]	
		Result	Consent limit	Result	Consent limit
Temperature	°C	16.5	-	15.4	-
Free chlorine	g/m <sup>3</sup>	<0.07	-	<0.07	-
Total chlorine	g/m <sup>3</sup>	0.14	0.5	<0.07	0.1
pH	pH	8.0	6.0 - 9.0	8.0	-
Suspended solids	g/m <sup>3</sup>	<3	100	11	-
Oil and grease	g/m <sup>3</sup>	<4	15	<4	-

Contaminants in the pool water sample were only present in very low concentrations, if at all. Concentrations of chlorine and oil and grease were below the limits of detection. Neither of the samples exceeded any of the consent limits. These results did not indicate any adverse effects on the quality of the receiving seawater due to the emptying of the outdoor pool.

Further details regarding sample collection can be found in Appendix III.

## 2.3 Marine ecological inspections

Two marine ecological inspections were conducted on Kawaroa Reef in the vicinity of the outfall during the 2018-2019 monitoring year. Both inspections, undertaken on 12 February 2019 and 6 May 2019, were conducted during low tide on the evening of sampling.

Pool water appeared to have only been released in batches within the designated windows around high tide, as per special condition 8 in the coastal permit.

In summary, the two reef inspections found that the range of intertidal species identified during both inspections was considered normal for that environment.

Inspection reports can be found in their entirety in Appendices II and III.



## 2.4 Incidents, investigations, and interventions

The monitoring programme for the year was based on what was considered to be an appropriate level of monitoring, review of data, and liaison with NPDC. During the year matters may arise which require additional activity by the Council, for example provision of advice and information, or investigation of potential or actual causes of non-compliance or failure to maintain good practices. A pro-active approach, that in the first instance avoids issues occurring, is favoured.

For all significant compliance issues, as well as complaints from the public, the Council maintains a database record. The record includes events where the individual/organisation concerned has itself notified the Council. Details of any investigation and corrective action taken are recorded for non-compliant events.

Complaints may be alleged to be associated with a particular site. If there is potentially an issue of legal liability, the Council must be able to prove by investigation that the identified individual/organisation is indeed the source of the incident (or that the allegation cannot be proven).

In the 2018-2019 period, the Council was not required to undertake significant additional investigations and interventions, or record incidents, in association with NPDC's conditions in resource consents or provisions in Regional Plans.

## 3 Discussion

### 3.1 Discussion of site performance

The Aquatic Centre was well managed throughout the period under review, ensuring that compliance with consent conditions was upheld. No major issues were identified in relation to site operation or consent compliance during the monitoring period. It was noted however that a small amount of chemical powder had spilled onto the floor of the maintenance shed. NPDC were made aware of this and clean-up was actioned.

### 3.2 Environmental effects of exercise of consents

Sample results from the backwash discharge revealed elevated concentrations of contaminants including chlorine, suspended solids, and oil and grease. Although there are no consent limits relating to the constituents of the backwash discharge, the effects of this are regulated through the permitted timing of the discharge and by monitoring the receiving environment. The high concentrations of different contaminants in the backwash water highlight the importance of scheduling this process to occur within two hours either side of high tide.

Sample results from the outdoor pool water and coastal waters adjacent to the outfall were compliant with consent limits.

Neither of the routine wastewater discharges that were monitored in the period under review appeared to have any significant effects on the ecology of the Kawaroa Reef, outside of the designated mixing zone.

The shortening of the ocean outfall, identified during the 2016-2017 monitoring year, has resulted in wastewater being discharged in shallower areas, higher up the rocky intertidal shore of the Kawaroa Reef. Ecological monitoring in the vicinity of the outfall indicates that the shortening of the ocean outfall has not adversely affected the ecology of the Kawaroa Reef.

### 3.3 Evaluation of performance

A tabular summary of the consent holder's compliance record for the year under review is set out in Tables 4 and 5.

Table 4 Summary of performance for consent 2339-4.0

<b>Purpose: Discharge swimming pool wastewater and filter backwash wastewater</b>		
<b>Condition requirement</b>	<b>Means of monitoring during period under review</b>	<b>Compliance achieved?</b>
1. Best practice to prevent or minimise adverse effects	Inspections and correspondence	Yes
2. Limits on volume and frequency of discharge	Not assessed during period under review	N/A
3. No chemicals added to pool within seven days prior to discharge	Samples collected	Yes
4. Limits on discharge constituents	Samples collected	Yes

<b>Purpose: Discharge swimming pool wastewater and filter backwash wastewater</b>		
<b>Condition requirement</b>	<b>Means of monitoring during period under review</b>	<b>Compliance achieved?</b>
5. Council notified by the Aquatic Centre seven days prior to discharge	Aquatic Centre communicating with the Council via email	Yes
6. Effects not observed beyond mixing zone	Inspection	Yes
7. Chlorine concentration limit beyond mixing zone	Samples collected	Yes
8. Discharge to occur within two hours of high tide	Inspection	Yes
9. Contingency plan	Plan reviewed in June 2016	Yes
10. Option for review of consent	Next consent review date June 2020	N/A
Overall assessment of consent compliance and environmental performance in respect of this consent		<b>High</b>
Overall assessment of administrative performance in respect of this consent		<b>High</b>

N/A = not applicable

Table 5 Summary of performance for consent 4588-3.0

<b>Purpose: To erect, place and maintain an ocean outfall</b>		
<b>Condition requirement</b>	<b>Means of monitoring during period under review</b>	<b>Compliance achieved?</b>
1. Notification prior to changes to nature or scale of structure	Inspection	Yes
2. Maintenance of structure	Inspection	Yes – although condition of outfall has deteriorated in recent years
3. Review of consent conditions	Next consent review date June 2020	N/A
Overall assessment of consent compliance and environmental performance in respect of this consent		<b>Good</b>
Overall assessment of administrative performance in respect of this consent		<b>High</b>

N/A = not applicable

Table 6 Evaluation of environmental performance over time

<b>Year</b>	<b>Consent no</b>	<b>High</b>	<b>Good</b>	<b>Improvement req</b>	<b>Poor</b>
2010-2011	2339	-	1	-	-
	4588	1	-	-	-
2011-2012	2339	1	-	-	-
	4588	1	-	-	-
2012-2013	2339	1	-	-	-
	4588	1	-	-	-

Year	Consent no	High	Good	Improvement req	Poor
2013-2014	2339	1	-	-	-
	4588	1	-	-	-
2014-2015	2339	-	1	-	-
	4588	1	-	-	-
2015-2016	2339	1	-	-	-
	4588	1	-	-	-
2016-2017	2339	-	-	1	-
	4588	-	-	1	-
2017-2018	2339	-	1	-	-
	4588	-	1	-	-
2018-2019	2339	1	-	-	-
	4588	-	1	-	-
Total	2339	5	3	1	0
	4588	6	2	1	0

During the year, NPDC demonstrated a high level of environmental and high level of administrative performance with the resource consents as defined in Section 1.1.4. During the year under review there were no Unauthorised Incidents and compliance with consent conditions was mostly upheld. However, environmental performance for consent 4588-3.0 was downgraded to "good" due to the condition of the ocean outfall structure. Although the integrity of the structure had not changed from the previous monitoring period and continues to function effectively as an outlet structure, its condition has deteriorated significantly since installation. Pre-existing cracks along the surface, and the previous dislodgment of the end section, of the structure warrant careful monitoring. In terms of overall environmental and compliance performance by the consent holder over the last several years, this report shows that the consent holder's environmental performance is improving.

### 3.4 Recommendations from the 2017-2018 Annual Report

In the 2017-2018 Annual Report, it was recommended:

1. THAT monitoring of consented activities at the Aquatic Centre in the 2018-2019 year continues at the same level as in 2017-2018.

This recommendation was implemented in full.

### 3.5 Alterations to monitoring programmes for 2019-2020

In designing and implementing the monitoring programmes for air/water discharges in the region, the Council has taken into account:

- the extent of information already made available through monitoring or other means to date;
- its relevance under the RMA;
- the Council's obligations to monitor consented activities and their effects under the RMA;
- the record of administrative and environmental performances of the consent holder; and
- reporting to the regional community.

The Council also takes into account the scope of assessments required at the time of renewal of permits, and the need to maintain a sound understanding of industrial processes within Taranaki exercising resource consents.

It is proposed that for 2019-2020, the programme remains unaltered from that for 2018-2019. A recommendation to this effect is attached to this report.

It should be noted that the proposed programme represents a reasonable and risk-based level of monitoring for the site in question. The Council reserves the right to subsequently adjust the programme from that initially prepared, should the need arise if potential or actual non-compliance is determined at any time during 2019-2020.

### 3.6 Exercise of optional review of consent

Resource consents 2339-4.0 and 4588-3.0 provide for an optional review of the consent in June 2020. Conditions 10 and 3 respectively allow the Council to review the consents, if there are grounds that the conditions are inadequate to deal with any adverse effects on the environment arising from the exercise of the resource consents.

Based on the results of monitoring in the year under review, and in previous years as set out in earlier annual compliance monitoring reports, it is considered that there are no grounds that require a review to be pursued or grounds to exercise the review option.

## 4 Recommendations

1. THAT in the first instance, monitoring of consented activities at the Aquatic Centre in the 2019-2020 year continues at the same level as in 2018-2019.
2. THAT should there be issues with environmental or administrative performance in 2019-2020, monitoring may be adjusted to reflect any additional investigation or intervention as found necessary.
3. THAT the option for a review of resource consents in June 2020, as set out in condition 10 of consent 2339-4.0 and condition 3 of consent 4588-3.0, not be exercised, on the grounds that the conditions are adequate to deal with any adverse effects on the environment arising from the exercise of the resource consents.

## Glossary of common terms and abbreviations

The following abbreviations and terms may be used within this report:

Biota	Flora and fauna of a particular place.
Bund	A wall around a tank to contain its contents in the case of a leak.
g/m <sup>3</sup>	Grams per cubic metre, and equivalent to milligrams per litre (mg/L). In water, this is also equivalent to parts per million (ppm), but the same does not apply to gaseous mixtures.
Incident	An event that is alleged or is found to have occurred that may have actual or potential environmental consequences or may involve non-compliance with a consent or rule in a regional plan. Registration of an incident by the Council does not automatically mean such an outcome had actually occurred.
Intervention	Action/s taken by Council to instruct or direct actions be taken to avoid or reduce the likelihood of an incident occurring.
Investigation	Action taken by Council to establish what were the circumstances/events surrounding an incident including any allegations of an incident.
Incident Register	The Incident Register contains a list of events recorded by the Council on the basis that they may have the potential or actual environmental consequences that may represent a breach of a consent or provision in a Regional Plan.
L/s	Litres per second.
Mixing zone	The zone below a discharge point where the discharge is not fully mixed with the receiving environment. For a stream, conventionally taken as a length equivalent to 7 times the width of the stream at the discharge point.
pH	A numerical system for measuring acidity in solutions, with 7 as neutral. Numbers lower than 7 are increasingly acidic and higher than 7 are increasingly alkaline. The scale is logarithmic i.e. a change of 1 represents a ten-fold change in strength. For example, a pH of 4 is ten times more acidic than a pH of 5.
Physicochemical	Measurement of both physical properties (e.g. temperature, clarity, density) and chemical determinants (e.g. metals and nutrients) to characterise the state of an environment.
Resource consent	Refer Section 87 of the RMA. Resource consents include land use consents (refer Sections 9 and 13 of the RMA), coastal permits (Sections 12, 14 and 15), water permits (Section 14) and discharge permits (Section 15).
RMA	<i>Resource Management Act 1991</i> and including all subsequent amendments.
SS	Suspended solids.
Temp	Temperature, measured in °C (degrees Celsius).
UI	Unauthorised Incident.

For further information on analytical methods, contact a Science Services Manager.

## Bibliography and references

- Taranaki Regional Council (2018). *Todd Energy Aquatic Centre Monitoring Programme Annual Report 2017-2018*. Technical Report 2018-08.
- Taranaki Regional Council (2017). *Todd Energy Aquatic Centre Monitoring Programme Annual Report 2016-2017*. Technical Report 2017-33.
- Taranaki Regional Council (2016). *Todd Energy Aquatic Centre Monitoring Programme Annual Report 2015-2016*. Technical Report 2016-104.
- Taranaki Regional Council (2015). *Todd Energy Aquatic Centre Monitoring Programme Annual Report 2014-2015*. Technical Report 2015-13.
- Taranaki Regional Council (2014). *New Plymouth District Council New Plymouth Aquatic Centre Monitoring Programme Annual Report 2013-2014*. Technical Report 2014-10.
- Taranaki Regional Council (2013). *New Plymouth District Council New Plymouth Aquatic Centre Monitoring Programme Annual Report 2012-2013*. Technical Report 2013-98.
- Taranaki Regional Council (2012). *New Plymouth District Council New Plymouth Aquatic Centre Monitoring Programme Annual Report 2011-2012*. Technical Report 2012-44.
- Taranaki Regional Council (2011). *New Plymouth District Council New Plymouth Aquatic Centre Monitoring Programme Annual Report 2010-2011*. Technical Report 2011-71.
- Taranaki Regional Council (2010). *New Plymouth District Council New Plymouth Aquatic Centre Monitoring Programme Annual Report 2009-2010*. Technical Report 2010-95.
- Taranaki Regional Council (2009). *New Plymouth District Council New Plymouth Aquatic Centre Monitoring Programme Annual Report 2008-2009*. Technical Report 2009-25.
- Taranaki Regional Council (2008). *New Plymouth District Council New Plymouth Aquatic Centre Monitoring Programme Annual Report 2007-2008*. Technical Report 2008-35.
- Taranaki Regional Council (2007). *New Plymouth District Council New Plymouth Aquatic Centre Monitoring Programme Annual Report 2006-2007*. Technical Report 2007-31.
- Taranaki Regional Council (2006). *New Plymouth District Council New Plymouth Aquatic Centre Monitoring Programme Annual Report 2005-2006*. Technical Report 2006-52.
- Taranaki Regional Council (2005). *New Plymouth District Council New Plymouth Aquatic Centre Monitoring Programme Annual Report 2004-2005*. Technical Report 2005-29.
- Taranaki Regional Council (2004). *New Plymouth District Council New Plymouth Aquatic Centre Monitoring Programme Annual Report 2003-2004*. Technical Report 2004-27.
- Taranaki Regional Council (2003). *New Plymouth District Council New Plymouth Aquatic Centre Monitoring Programme Annual Report 2002-2003*. Technical Report 2003-49.
- Taranaki Regional Council (2002). *New Plymouth District Council Fletcher Challenge Energy Aquatic Centre Monitoring Programme Annual Report 2001-2002*. Technical Report 2002-42.



Taranaki Regional Council (2001). *New Plymouth District Council Fletcher Challenge Energy Aquatic Centre Monitoring Programme Annual Report 2000-01*. Technical Report 2001-77.

Taranaki Regional Council (2000). *New Plymouth District Council Fletcher Challenge Energy Aquatic Centre Monitoring Programme Annual Report 1999-2000*. Technical Report 2000-54.



# Appendix I

## Resource consents held by NPDC

(For a copy of the signed resource consent  
please contact the TRC Consents department)

Consent number	Purpose	Granted	Review	Expires
<b>2339-4.0</b>	To discharge public swimming pool wastewater and filter backwash wastewater via an ocean outfall into the Tasman Sea.	6 August 2014	June 2020, June 2026, and in accordance with special condition 10	1 June 2032
<b>4588-3.0</b>	To occupy the Coastal Marine Area with an ocean outfall from the New Plymouth Aquatic Centre.	6 August 2014	June 2020, June 2026	1 June 2032

### Water abstraction permits

Section 14 of the RMA stipulates that no person may take, use, dam or divert any water, unless the activity is expressly allowed for by a resource consent or a rule in a regional plan, or it falls within some particular categories set out in Section 14. Permits authorising the abstraction of water are issued by the Council under Section 87(d) of the RMA.

### Water discharge permits

Section 15(1)(a) of the RMA stipulates that no person may discharge any contaminant into water, unless the activity is expressly allowed for by a resource consent or a rule in a regional plan, or by national regulations. Permits authorising discharges to water are issued by the Council under Section 87(e) of the RMA.

### Air discharge permits

Section 15(1)(c) of the RMA stipulates that no person may discharge any contaminant from any industrial or trade premises into air, unless the activity is expressly allowed for by a resource consent, a rule in a regional plan, or by national regulations. Permits authorising discharges to air are issued by the Council under Section 87(e) of the RMA.

### Discharges of wastes to land

Sections 15(1)(b) and (d) of the RMA stipulate that no person may discharge any contaminant onto land if it may then enter water, or from any industrial or trade premises onto land under any circumstances, unless the activity is expressly allowed for by a resource consent, a rule in a regional plan, or by national regulations. Permits authorising the discharge of wastes to land are issued by the Council under Section 87(e) of the RMA.

### Land use permits

Section 13(1)(a) of the RMA stipulates that no person may in relation to the bed of any lake or river use, erect, reconstruct, place, alter, extend, remove, or demolish any structure or part of any structure in, on, under, or over the bed, unless the activity is expressly allowed for by a resource consent, a rule in a regional plan, or by national regulations. Land use permits are issued by the Council under Section 87(a) of the RMA.

### Coastal permits

Section 12(1)(b) of the RMA stipulates that no person may erect, reconstruct, place, alter, extend, remove, or demolish any structure that is fixed in, on, under, or over any foreshore or seabed, unless the activity is expressly allowed for by a resource consent, a rule in a regional plan, or by national regulations. Coastal permits are issued by the Council under Section 87(c) of the RMA.

**Coastal Permit**  
**Pursuant to the Resource Management Act 1991**  
**a resource consent is hereby granted by the**  
**Taranaki Regional Council**

Name of  
Consent Holder:                      New Plymouth District Council  
Private Bag 2025  
New Plymouth 4342

Decision Date                          06 August 2014

Commencement Date                06 August 2014

**Conditions of Consent**

Consent Granted:                      To occupy the Coastal Marine Area with a discharge pipe  
from the New Plymouth Aquatic Centre

Expiry Date:                            01 June 2032

Review Date(s):                        June 2020, June 2026

Site Location:                          Tisch Avenue, New Plymouth

Legal Description:                      Adjacent to Pt Sec E Tn of New Plymouth

Grid Reference (NZTM)                1692028E-5676596N

Catchment:                                Tasman Sea

*For General, Standard and Special conditions  
pertaining to this consent please see reverse side of this document*

**General condition**

- a. The consent holder shall pay to the Taranaki Regional Council all the administration, monitoring and supervision costs of this consent, fixed in accordance with section 36 of the Resource Management Act 1991.

**Special conditions**

1. This consent authorises the occupation of space in the Coastal Marine Area by the outlet structure existing at the time the application for this consent was lodged, and as described in the application. Any change to the nature or scale of the structure may therefore need to be authorised by a formal process in accordance with the Resource Management Act, 1991.
2. The consent holder shall maintain the structure in a safe and sound condition such that it continues to function effectively as an outlet structure.
3. In accordance with section 128 and section 129 of the Resource Management Act 1991, the Taranaki Regional Council may serve notice of its intention to review, amend, delete or add to the conditions of this resource consent by giving notice of review during the month of June 2020 and/or June 2026 for the purpose of ensuring that the conditions are adequate to deal with any adverse effects on the environment arising from the exercise of this resource consent, which were either not foreseen at the time the application was considered or which it was not appropriate to deal with at the time.

Signed at Stratford on 06 August 2014

For and on behalf of  
Taranaki Regional Council

---

A D McLay  
**Director - Resource Management**

**Coastal Permit**  
**Pursuant to the Resource Management Act 1991**  
**a resource consent is hereby granted by the**  
**Taranaki Regional Council**

Name of  
Consent Holder:                      New Plymouth District Council  
Private Bag 2025  
New Plymouth 4342

Decision Date                              06 August 2014

Commencement Date                      06 August 2014

**Conditions of Consent**

Consent Granted:                      To discharge public swimming pool wastewater and filter  
backwash wastewater via an ocean outfall into the Tasman  
Sea

Expiry Date:                              01 June 2032

Review Date(s):                         June 2020, June 2026, and in accordance with special  
condition 10

Site Location:                             Tisch Avenue, New Plymouth

Legal Description:                        Adjacent to Pt Sec E Tn of New Plymouth

Grid Reference (NZTM)                 1692028E-5676596N (point of discharge)

Catchment:                                Tasman Sea

*For General, Standard and Special conditions  
pertaining to this consent please see reverse side of this document*

### General condition

- a. The consent holder shall pay to the Taranaki Regional Council all the administration, monitoring and supervision costs of this consent, fixed in accordance with section 36 of the Resource Management Act 1991.

### Special conditions

1. The consent holder shall at all times adopt the best practicable option, as defined in section 2 of the Resource Management Act 1991, to prevent or minimise any adverse effects on the environment from the exercise of this consent.
2. The consent authorises the following discharges:
  - a) up to 20 cubic metres per fortnight of outdoor pool treated filter backwash,
  - b) up to 1.2 cubic metres per day of indoor children's pool and spa sand treated filter backwash,
  - c) up to 1000 cubic metres of pool wastewater on two occasion per year for the purpose of emptying the indoor or outdoor swimming pool systems.
3. No discharge from the emptying of any pool shall occur unless there has been no addition of chemicals to the pool for at least seven days.
4. Constituents of the discharge from the emptying of either pool shall meet the standards shown in the following table.

<u>Constituent</u>	<u>Standard</u>
pH	Within the range 6.0 to 9.0
suspended solids	Concentration not greater than 100 gm <sup>-3</sup>
Oil and grease	Concentration not greater than 15 gm <sup>-3</sup>
Total residual chlorine	Concentration not greater than 0.5 gm <sup>-3</sup>

This condition shall apply before entry of the treated wastewater into the receiving waters at a designated sampling point approved by the Chief Executive, Taranaki Regional Council.

5. On each occasion that a pool is emptied the consent holder shall notify the Chief Executive, Taranaki Regional Council, at least 7 working days before any discharge occurs. Notification shall include the consent number and a brief description of the activity consented, and shall be emailed to [worknotification@trc.govt.nz](mailto:worknotification@trc.govt.nz).
6. After allowing for reasonable mixing, within a mixing zone extending 5 metres of the discharge point, the discharge shall not, either by itself or in combination with other discharges, give rise to any or all of the following effects in the receiving water:
  - a) the production of any conspicuous oil or grease films, scums or foams, or floatable or suspended materials;
  - b) any conspicuous change in the colour or visual clarity;
  - c) any emission of objectionable odour;
  - d) any significant adverse effects on aquatic life.



## Consent 2339-4.0

7. Beyond a mixing zone of 5 metres the discharge shall not give rise to a total residual chlorine level of greater than 0.1 gm-3
8. Any discharge shall only occur two hours either side of high tide.
9. The consent holder shall maintain and regularly update a 'Contingency Plan' that details measures and procedures that will be undertaken in the event of a chemical spill. The plan shall be approved by the Chief Executive, Taranaki Regional Council, acting in a certification capacity as being adequate to avoid, remedy or mitigate the environmental effects of such an event.
10. In accordance with section 128 and section 129 of the Resource Management Act 1991, the Taranaki Regional Council may serve notice of its intention to review, amend, delete or add to the conditions of this resource consent by giving notice of review:
  - a) during the month of June 2020 and/or June 2026, for the purpose of ensuring that the conditions are adequate to deal with any adverse effects on the environment arising from the exercise of this resource consent, which were either not foreseen at the time the application was considered or which it was not appropriate to deal with at the time; and/or
  - b) annually during the month of June for the purpose of including conditions requiring provision of records necessary to check compliance with condition 2.

Signed at Stratford on 06 August 2014

For and on behalf of  
Taranaki Regional Council

---

A D McLay  
**Director - Resource Management**



## Appendix II

Marine ecological inspection  
12 February 2019



## File note

13 February 2019

Document: 2203536

## Todd Energy Aquatic Centre intertidal reef inspection – 12 February 2019

On Tuesday 12 February 2019, the Taranaki Regional Council (the Council) visited the Todd Energy Aquatic Centre (Aquatic Centre) at 14:05 (DST) in order to sample the backwash discharge. High tide was at 15:28 (3.0 m). The backwash commenced at 14:15 and discharged for approximately seven minutes. The backwash discharge sample was brown-green in colour, turbid and odourless. A shoreline water sample was collected approximately 5 m east of the outfall at 14:30. The inshore waters were slightly brown-green, with moderate swell.

The results of the backwash discharge sample are presented in Table 1.

Table 1 Results of the backwash discharge sample (STW001078) and shoreline water sample (SEA902051), collected on 12 February 2019

Parameter	Unit	Backwash discharge [STW001079]	5 m east of outfall [SEA902051]	
		Result	Result	Consent limit
Temperature	°C	28.1	24.8	-
Free chlorine	g/m <sup>3</sup>	0.53	<0.07	-
Total chlorine	g/m <sup>3</sup>	2.20	0.13	0.1
pH	pH	7.8	8.2	-
Suspended solids	g/m <sup>3</sup>	490	69	-
Oil and grease	g/m <sup>3</sup>	88	<4	-

The backwash discharge sample contained elevated concentrations of chlorine, oil and grease, and suspended solids (Table 1). Although considerably lower than the concentration of the backwash discharge sample, the concentration of total chlorine in the shoreline sample was above the consent limit of 0.1 g/m<sup>3</sup> (Table 1). However, it is possible that the actual value for total chlorine did in fact fall below the consent limit as the repeatability of the chlorine meter used is  $\pm 0.05$  g/m<sup>3</sup>; this result therefore provided insufficient evidence for noncompliance with condition 4 of consent 2339-4.0. The concentration of oil and grease in the shoreline sample was below the detection limit and the pH was within the typical range for seawater. The sample contained a high concentration of suspended solids, most likely attributed to the turbulent conditions of the high energy inshore waters along the coast. The sea did not appear discoloured or otherwise adversely affected by the discharge at the time the samples were taken.



Photo 1 Outfall pipe during the 2017-2018 backwash inspection (4 April 2018)

The reef inspection was carried out at the next low tide (21:50 on 12 February 2019 at 1.0 m). Upon arrival at the reef at 20:30, a clear, odourless flow was found discharging from the outfall at a low rate. There were no objectionable odours, or conspicuous films or scums, at the discharge point. Although the extent of *Ulva* sp. cover in the vicinity of the outfall was slightly higher than that described in the 2017-2018 inspection, the high density cover was restricted to within 5 m of the outfall and was considerably lower than the *Ulva* sp. cover recorded in previous inspections (Photo 2). This overall improvement is most likely due to the reduction in freshwater output from the marine outfall since extensive works were undertaken at the Aquatic Centre in 2018-2019 to divert greywater discharge from the stormwater system, leading to the marine outfall, to the sewerage network.

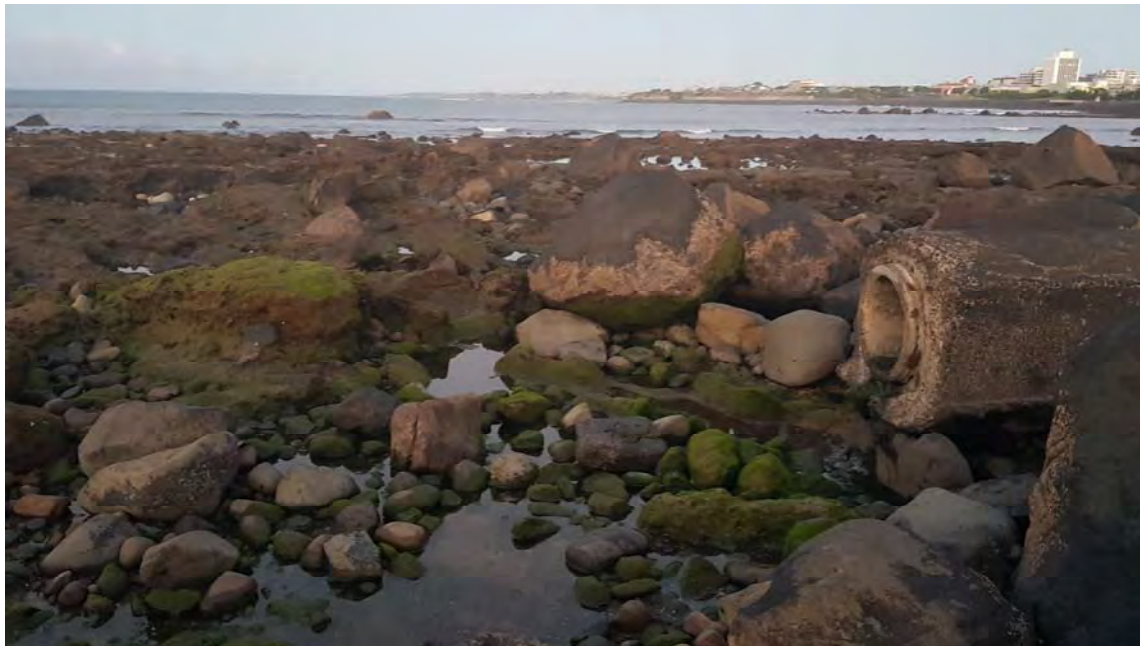


Photo 2 *Ulva* sp. distribution in the vicinity of the marine outfall (12 February 2019)

Upper shore species diversity was found to be considerably higher than recorded in recent surveys, indicative of an improvement in reef health since the completion of works at the Aquatic Centre on 23 September 2017 (Photo 3).



Photo 3 A range of species identified during the intertidal reef inspection (12 February 2019)

The following invertebrates were present on the upper shore in the vicinity of the pipe: the anemone *Isactinia olivacea* and molluscs *Diloma aethiops*, *Cellana radians*, *Cellana ornata*, *Chiton glaucus*, *Sypharochiton pelliserpentis*, *Cantharidella tessellata*, *Acanthochitona zelandica*, *Haustrum haustorium*, *Haustrum scobina*, *Lunella smaragdus* and *Notoacmea* sp. The barnacles *Chamaesipho columna*, *Chamaesipho brunnea* and *Epopella plicata* were also found, as well as the bivalve *Zenostrobus pulex*, a flatworm and the polychaete worm *Spirobranchus cariniferus*. Large numbers of the shrimp *Palaemon affinis* were found in small rock pools close to the outfall, given the time of day. The green algal species *Chaetomorpha aerea* was detected, and *Ulva* sp. was present with low to moderate cover up to 5 m from the outfall. The red algal species *Corallina* paint, *Corallina* turf and *Gelidium caulacanthum* were also present. Brown algal species included *Hormosira banksii* and its obligate epiphyte *Notheia anomala* in a rock pool close to the outfall, *Ralfsia* sp., and *Leathesia* sp.

Further down on the shore, still within the influence of the pipe discharge, the following species were identified: molluscs *D. aethiops*, *C. ornata*, *C. glaucus*, *C. tessellata*, *H. haustorium*, *H. scobina*, *L. smaragdus* and *Notoacmea* sp. The barnacles *C. columna* and *E. plicata* were also found, as well as amphipods, *P. affinis*, and the crabs *Leptograpsus variegatus*, *Ozius truncatus*, *Pagurus* sp., *Petrolisthes elongatus* and *Plagusia chabrus*. *Spirobranchus cariniferus* was more abundant further down the shore, and clingfish, triplefins and *Evechinus chloroticus* were recorded here. The green algal species *C. aerea* was detected. Red algal species included abundant *Corallina* paint, *Corallina* turf and *G. caulacanthum*, as well as *Ballia* sp. and *Porphyra* sp. Brown algal species included *H. banksii* and epiphytic *N. anomala*, again considerably more abundant than in the vicinity of the outfall, *Ralfsia* sp., and *Leathesia* sp.

In comparison with the intertidal community further down the shore, the area surrounding the pipe supported very little biomass, although species diversity appeared to have increased considerably since the previous inspection. This assemblage was typical of upshore intertidal reef environments, which generally support less biomass and diversity than downshore environments. The assemblage of species found downshore from the outfall, which included a number of crab and fish species, was similar to what would be expected at this elevation on the shore and was comparable with previous inspections.

In summary, despite the high concentration of contaminants discharged during the backwash, no environmental effects were detected and the composition of intertidal species identified during this inspection was considered normal for this type of environment. It was also encouraging to see an increase in species diversity in the vicinity of the outfall, with this diversity mostly found in localised rock pools, since the diversion of greywater from the stormwater to sewerage network. Despite no adverse effects being detected beyond the mixing zone, it is recommended that the backwash discharge is redirected to sewer as soon as practicable.

Angela Smith

**Technical Officer**

Thomas McElroy

**Marine Ecologist**



## Appendix III

Marine ecological inspection  
6 May 2019



## File note

9 May 2019

Document: 2254605

### Todd Energy Aquatic Centre intertidal ecological inspection – 6 May 2019

On Monday 29 April 2019, the Taranaki Regional Council (the Council) received notification from Todd Energy Aquatic Centre (the Aquatic Centre) staff that they were intending to empty the outdoor swimming pool on Monday 6 May 2019. A Council Officer visited the Aquatic Centre at 08:25 on 6 May 2019 in order to test the chlorine concentration of the outdoor pool and collect samples.

Pool water testing found that the concentration of total chlorine was compliant with the limit set out in condition 4 of resource consent 2339-4 ( $<0.5 \text{ g/m}^3$ , Table 1). Aquatic Centre staff were advised of this, and that they could begin emptying the pool within 2 hours of the next high tide (providing compliance with condition 8). High tide was at 10:29 (NZST) on the day of the inspection. Samples were collected from the outdoor pool at 08:30, prior to emptying, and from the Tasman Sea at 09:15 (Photo 1).



Photo 1 Shoreline seawater sampling adjacent to the marine outfall (6 May 2019)

The results of the pool discharge and shoreline seawater samples are listed in Table 1. Neither sample exceeded any of the consent limits.

Table 1 Results of pool discharge and shoreline seawater samples (6 May 2019)

Parameter	Unit	6 May 2019			
		Outdoor pool prior to emptying [STW001079]		5 m east of outfall [SEA902051]	
		Result	Consent limit	Result	Consent limit
Temperature	°C	16.5	-	15.4	-
Free chlorine	g/m <sup>3</sup>	<0.07	-	<0.07	-
Total chlorine	g/m <sup>3</sup>	0.14	0.5	<0.07	0.1
pH	pH	8.0	6.0 – 9.0	8.0	-
Suspended solids	g/m <sup>3</sup>	<3	100	11	-
Oil and grease	g/m <sup>3</sup>	<4	15	<4	-

A reef inspection was carried out during the next low tide, which was at 16:47 on 6 May 2019 (0.4 m). Upon arrival at the reef at approximately 15:30, a low flow was found to be discharging from the marine outfall (Photo 2). There were no objectionable odours, or conspicuous films or scums, at the discharge point. As with previous inspections, blue paint chips were found in the immediate vicinity of the outfall (Photo 2). The outdoor pool had only been partly emptied since the morning inspection, indicating compliance with the consent condition of only discharging in batches within two hours either side of high tide. The reef inspection found no detectable chlorine odour or any visual issues outside of the discharge mixing zone.



Photo 2 (A) Low flow discharging from the outfall at 15:30 (6 May 2019), with blue paint chips visible; (B) Close-up of paint chips

The following invertebrates were present on the upper shore in the vicinity of the pipe: molluscs *Diloma aethiops*, *Diloma arida*, *Cantharidella tessellata*, *Austrolittorina antipodum* and *Zeacumantus subcarinatus*,

the barnacles *Chamaesipho columna* and *Chamaesipho brunnea*, limpets *Cellana radians*, *Cellana ornata* and *Notoacmea* sp., and the mussel *Xenostrobus pulex*. Amphipods, an unidentified fish and shrimp, and the polychaete tubeworm *Spirobranchus cariniferus* were also present. The brown alga *Ralfsia* sp., and the red algal species *Gelidium caulacanthum*, were present within 5 m of the outfall. Additionally, the green algae *Ulva intestinalis*, *Ulva* sp. and *Chaetomorpha aerea*, known indicators of freshwater influence, moderately covered a stretch of the upper shore that extended up to approximately 5 m eastwards of the outfall.

The cover of *Ulva* sp. appeared to track the flow path of discharge from the outfall and was similar to the extent of cover recorded during the February 2019 reef inspection (<5 m, Photo 3). In comparison with the intertidal community further down the shore, the area surrounding the pipe supported very little biomass and was less diverse (Photo 4). However, this assemblage was similar to that found on previous inspections in the vicinity of the pipe, and is typical for this height on the shore. It was also noted that some gastropods (e.g. *Diloma aethiops*) found within 5 m of the marine outfall were more weakly attached to the substrate than gastropods found outside of the mixing zone. Attachment strength is a key determinant of gastropod survival on the rocky shore, as weakly attached individuals are more likely to be dislodged by predation and wave action, leading to higher mortality rates (O'Dwyer, Lynch & Poulin, 2014). However, these adverse effects were not detected outside of the 5 m mixing zone.



Photo 3 *Ulva* sp. cover extending up to 5 m east of the marine outfall

Further down on the shore, still within the influence of the pipe discharge, the following species were identified: molluscs *Haustrum scobina*, *D. aethiops* (very abundant), *D. arida*, *Z. subcarinatus*, *C. tessellata* and *Lunella smaragdus*, the chitons *Sypharochiton pelliserpentis* and *Chiton glaucus*, limpets *C. radians*, *C. ornata*, *Onchidella nigricans*, *Notoacmea* sp. and *Siphonaria australis*, sea anemone *Isactinia olivacea*, mussel *X. pulex*, barnacles *C. columnar*, *C. brunnea* and *Epopella plicata*, and the polychaete worm *S. cariniferus*. An unidentified shrimp, amphipods and the hermit crab *Pagarus* sp. were also found. Red algae included *Corallina officinalis*, encrusting coralline algae, *Gelidium* sp. and two other unidentified red species. Brown algae included *Ralfsia* sp., *Hormosira banksia* and its obligate epiphyte *Notheia anomala*, and the green algae *C. aerea* and *Ulva* sp. were also present. Overall, these species are similar to what would be expected at this elevation on the shore.



Photo 4 (A) Species characteristic of the exposed upper shore, within 5 m of the outfall;  
(B) Greater abundance and biodiversity in a rockpool approximately 15 m away from the outfall

In summary, the composition of intertidal species identified during this inspection was considered normal for this type of environment. No adverse effects on local intertidal communities were observed beyond the 5 m mixing zone as a result of the outdoor pool discharge, as specified in consent 2339-4.

Angela Smith  
Technical Officer

Thomas McElroy  
Marine Ecologist