

## Environment quality

Read the full story here:  
[tinyurl.com/TRCenvironment](http://tinyurl.com/TRCenvironment)

Monitoring the health of waterways is a core part of the Council's business and a clear picture of trends is emerging from almost two decades' worth of data. Trend analysis in 2013/2014 produced encouraging news.



**18** 

years of data analysed to reveal best-ever trends in the ecological health and physical and chemical state of our monitored waterways

**0** sites showing deteriorating trend in nitrate, ammonia or total nitrogen levels

**20** <sup>of 57</sup>

monitored sites recorded their best-ever score for ecological health



**99%**<sub>6</sub>

of periphyton (algae) surveys in past three years met national guidelines

**32** state of the environment monitoring programmes implemented

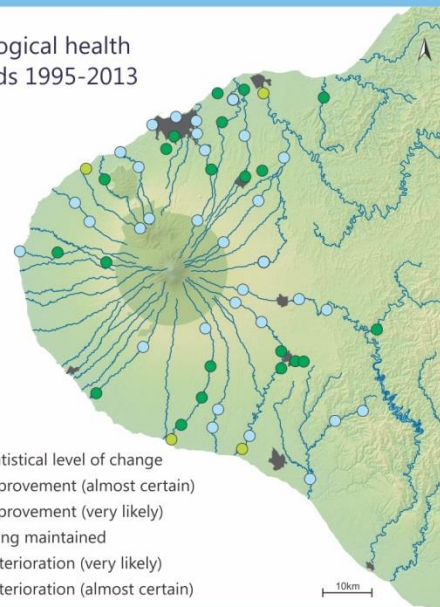
**100%**

samples in 'excellent' or 'good' categories in two months of air quality monitoring alongside the Bell Block bypass

**95%** of samples within MfE guidelines during summer monitoring programme at coastal bathing beaches

Ecological health trends 1995-2013

- KEY** Statistical level of change
- Improvement (almost certain)
  - Improvement (very likely)
  - Being maintained
  - Deterioration (very likely)
  - Deterioration (almost certain)



## Consents and compliance

Read the full story here: [tinyurl.com/TRCconsents](http://tinyurl.com/TRCconsents)

Council staff issued a record number of resource consents during the 2013/2014 year – but issuing consents is far from the end of the story. Compliance with consent conditions is monitored closely – every dairy effluent system in the region, for example, is inspected at least once a year.



**100%** dairy farm effluent systems inspected

**632** resource consents issued

**100%**

compliance with consent processing timelines for 14th year running



**2,043** water and soil samples collected while monitoring consent compliance

## Transport planning

Read the full story here: [tinyurl.com/TRCtransport](http://tinyurl.com/TRCtransport)



The Council's Regional Land Transport Programme 2012-2015 is the key document under which vital projects like the 'Vickers to City' New Plymouth SH3 upgrade can be funded and implemented, a key element here being an additional bridge over the Waiwhakaiho River. The Council also successfully lobbied the Government for a new regional highways funding mechanism.

**\$90 million** annual budget for proposed new contestible regional highways improvements fund announced by the Government after provincial lobbying led by the Council.

**\$19 million** in regional roading funds allocated to Vickers to City project



**6** State highway bridges approved for strengthening under variations to the Regional Land Transport Programme

## Pollution response and enforcement

Read the full story here: [tinyurl.com/TRCconsents](http://tinyurl.com/TRCconsents)

Regular exercises ensure Council staff have the right training and right equipment for responding to environmental incidents such as oil spills. Staff also respond to reports of pollution, offensive odour and other environmental incidents, and where appropriate use a variety of enforcement procedures up to and including prosecution.



**2** marine oil spill response exercises



**781** environmental incidents investigated

**5** prosecutions initiated

**224** abatement notices and 100 infringement notices issued

## Hazard management

Read the full story here: [tinyurl.com/TRChazards](http://tinyurl.com/TRChazards)



The first stage of a three-year, \$3 million project to upgrade Waitara's flood defences began with the stopbanks between the Town Bridge and Browne St being raised and strengthened. With its flood protection and Civil Defence programmes, the Council plays a leading role in emergency preparedness and response.

**200<sup>+</sup>** participants in Exercise Pahu (November 2013), which tested Civil Defence response to a Mt Taranaki eruption scenario

**3<sup>rd</sup>** stage of three-stage Lower Waiwhakaiho flood protection scheme upgrade completed, bringing the scheme's standard of protection to 1% (1 in 100 years)

**1%** 

(1 in 100 year) standard of protection in design of Lower Waitara River Flood protection scheme upgrade

## Passenger transport

Read the full story here: [tinyurl.com/TRCtransport](http://tinyurl.com/TRCtransport)

Rochelle Jakeman is riding the bus on a journey to achieve her dream, using the Hawera-New Plymouth Connector service to commute between her Hawera home and her nursing studies at WITT in New Plymouth. She's among thousands of users of transport services provided by the Taranaki Regional Council.



**20%** increase in adult patronage for New Plymouth Citylink



**8,027**

**578,396**

New Plymouth Citylink passenger trips, up 5.4% on previous year

**45,441**

passenger trips in the Total Mobility scheme

passenger trips in first four months of Hawera-New Plymouth Connector service

## Land management

Read the full story here: [tinyurl.com/TRCLand](http://tinyurl.com/TRCLand)



Bruce Grindlay is typical of many ring plain dairy farmers who have been convinced of the benefits of being part of the Taranaki Regional Council's world-scale Riparian Management Programme. "It's all about ensuring we have a sustainable dairy industry in Taranaki. Looking after the land and looking after the water is part of being a farmer these days — no getting away from that," he says.

**99%<sup>5</sup>**

of dairy farms have riparian plans



**481,999**

plants supplied for riparian protection and soil conservation

**13,836**

kilometres of ring plain streambanks covered by riparian plans

**80%<sup>2</sup>**

of ring plain streambanks protected with fencing

## Biosecurity

Read the full story here: [tinyurl.com/TRCbiosecurity](http://tinyurl.com/TRCbiosecurity)

Urban inspections and the use of GPS technology to record the location of pest plants such as this gorse were among the broad range of biosecurity activities and programmes carried out by the Council during the year, aimed at pest animals as well as pest plants.



**6,289**

property inspections for pest plants

**4,374**

properties covering 235,000 ha in Self-Help Possum Control Programme

**3.54%**

possum trap rate on ring plain - target is less than 10%



**21**



landowners given advice about rabbits

**400**

pest plant notices of direction - mostly pampas, ragwort and gorse

**205**

complaints from public about pest plants

## Public information

Read the full story here: [tinyurl.com/TRCinformation](http://tinyurl.com/TRCinformation)



Pukeiti has become a hive of educational activity since the Taranaki Regional Council launched the 'Rainforest School', a multi-faceted study unit that has resulted in hundreds of young visitor like these from Woodleigh School. The Rainforest School adds extra depth to the Council's community outreach via its education and communications programmes.

**16**

Environmental Awards presented in revamped programme

**53,105**

average monthly pageviews on Taranaki Regional Council websites

**923**

students took part in Council education sessions at Pukeiti



**7,094**

students involved in Council education programme

**25%**

of recorded news media references to Council generated by TRC media releases

## Recreation, culture and heritage

Read the full story here: [tinyurl.com/TRCrecreation](http://tinyurl.com/TRCrecreation)

This hands-on garden workshop at Tupare was among a host of free workshops, fairs and other events in 2013/2014 encouraging public use of Tupare, Pukeiti and Hollard Gardens. Besides administering these premier heritage properties, the Council plays a central role in ensuring Yarrow Stadium maintains its status as a leading regional sports venue, and supports Puke Ariki and Aotea Utanganui - Museum of South Taranaki.



**100**  
**42**

people - capacity of Hollard Gardens' new multi-purpose all-weather venue

events at Tupare

**25,500+**

capacity of Yarrow Stadium, owned by the Taranaki Stadium Trust, of which the Taranaki Regional Council assumed control in 2013

**5**

projects supported at Puke Ariki and Aotea Utanganui - Museum of South Taranaki

**30,421**

visitors to Pukeiti (up 18% on previous year)

## Biodiversity

Read the full story here: [tinyurl.com/TRCbiodiversity](http://tinyurl.com/TRCbiodiversity)



The Marshalls of Tikorangi are well known for their rugby prowess, but they're also doing their bit for indigenous biodiversity in Taranaki by actively protecting bush blocks on their property. They're among scores of landowners the Council's biodiversity team works with.

**178**

defined Key Native Ecosystems (KNEs) covering 119,103ha



**\$341,745**

in Environmental Enhancement Grants for KNEs and other significant environmental projects.

**34%**

of privately owned KNE lands protected with QEII or Department of Conservation covenants

**64**

privately owned KNEs (out of 132) covered by biodiversity plans

