



## ZONE C PLANTS Stream edges floodplains and low plantings



*Carex secta* (purei)



*Austroderia fulvida* (toetoe)



*Hebe stricta* (koromiko)



*Phormium tenax* (flax/harakeke)



*Phormium cookianum* (mountain flax)



BARRY HARTLEY

For further advice or information about sustainable land management contact:

**TARANAKI REGIONAL COUNCIL**

Land Management Section, Private bag 713, Stratford

Ph: 06 765 7127 Fax: 06 765 5097 [www.trc.govt.nz](http://www.trc.govt.nz)

**ZONE B PLANTS** Shrubs and trees for drier banks above the floodplain



*Aristotelia serrata* (Wineberry/Makomako)



*Coprosma robusta* (Karamu)



*Carpodetus serratus* (Putaputaweta/Marbleleaf)



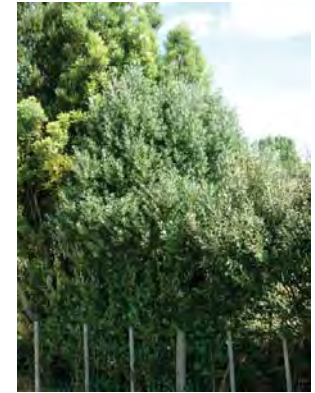
*Cordyline australis* (Cabbage tree/Ti Kouka)



*Coprosma repens* (Taupata)



*Corokia macrocarpa* (Corokia/Whakataka)



**ZONE B PLANTS** Shrubs and trees for drier banks above the floodplain



**Corynocarpus laevigatus** (Karaka)



**Dodonaea viscosa** (Akeake)



**Dacrycarpus dacrydioides** (Kahikatea)



**Fuchsia excorticata** (Kotukutuku/NZ Fuchsia)



**Dacrydium cupressinum** (Rimu)



**Griselinia littoralis** (Broadleaf/Papauma)



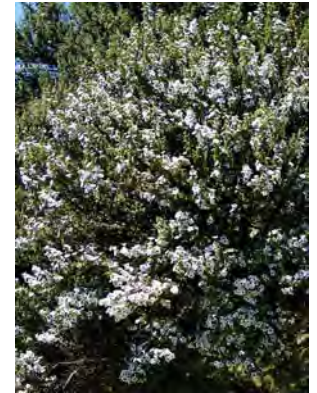
**ZONE B PLANTS** Shrubs and trees for drier banks above the floodplain



*Hoheria angustifolia* (Narrow leaved lacebark)



*Leptospermum scoparium* (Manuka)



*Hoheria sexstylosa* (Houhere/Lacebark)



*Melictyus ramiflorus* (Whiteywood/Mahoe)



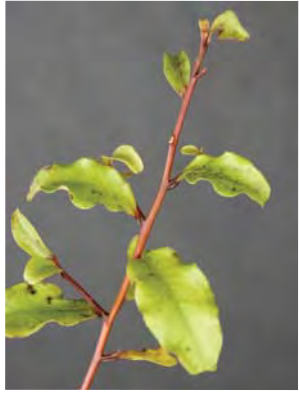
*Kunzea ericoides* (Kanuka)



*Metrosideros excelsa* (Pohutukawa)



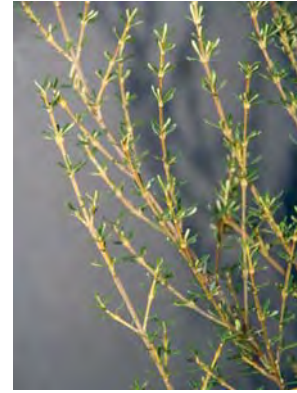
**ZONE B PLANTS** Shrubs and trees for drier banks above the floodplain



**Myrsine australis** (Mapau)



MAGGIE BAYFIELD



**Olearia solandrii** (Coastal tree daisy)



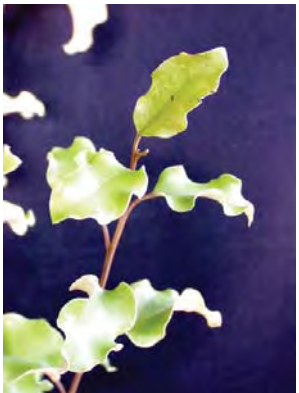
BARRY HARTLEY



**Olearia lineata var. dertonii** (Twiggy tree daisy)



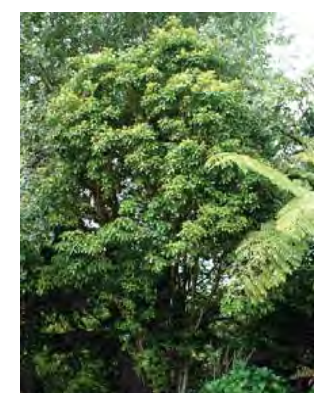
**Olearia traversii** (Chatham Island Akeake)



**Olearia paniculata** (Akiraho)



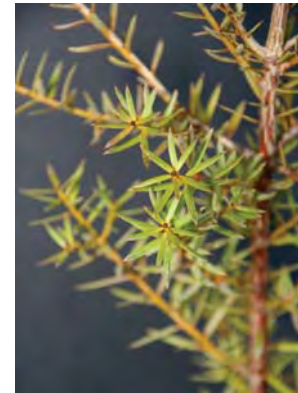
**Pittosporum eugenioides** (Lemonwood/Tarata)



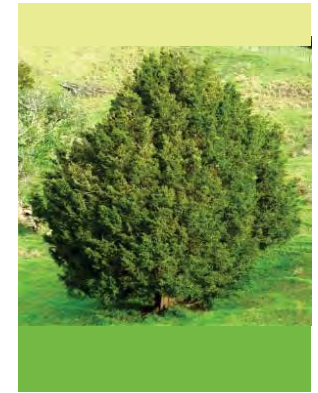
**ZONE B PLANTS** Shrubs and trees for drier banks above the floodplain



**Pittosporum crassifolium** (Karo)



**Podocarpus totara** (Totara)



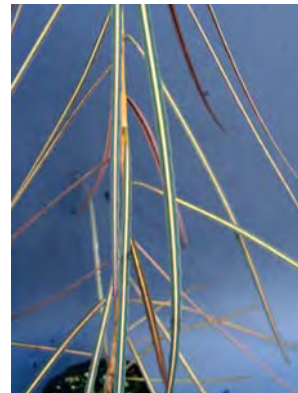
**Pittosporum tenuifolium** (Kohuhu)



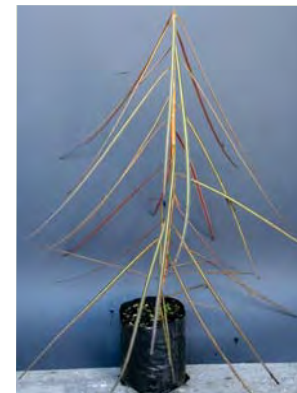
**Pseudopanax arboreus** (Five Finger/Puahou)



**Plagianthus regius** (Ribbonwood/Manatu)



**Pseudopanax crassifolius** (Lancewood)



PETER WINTER

**ZONE B PLANTS** Shrubs and trees for drier banks above the floodplain



MAGGIE BAYFIELD

*Pseudopanax laetus* (Broad-leafed five finger)



*Sophora microphylla* (Kowhai)

**PLANTS SUITABLE FOR YOUR CLIMATIC ZONE: C M or U** Plants below will grow in the climatic zones listed and are available through TRC native plant scheme.

Botanical name	Common name(s)	Planting zone	Climate zone
Carex secta	Purei	C	C M U
Cortaderia fulvida	Toetoe	C	C M U
Hebe stricta	Koromiko	C	M U
Phormium cookianum	Mountain flax	C	C M U
Phormium tenax	Flax\harakeke	C	C M U
Aristotelia serrata	Wineberry\Makomako	B	M U
Carpodetus serratus	Putaputaweta\Marbleleaf	B	M U
Coprosma repens	Taupata	B	C
Coprosma robusta	Karamu	B	M U
Cordyline australis	Cabbage tree\Ti Kouka	B	C M U
Corokia macrocarpa	Corokia\Whakataka	B	C
Corynocarpus laevigatus	Karaka	B	C
Dacrycarpus dacrydioides	Kahikatea*	B	C M U
Dacrydium cupressinum	Rimu*	B	C M U
Dodonaea viscosa	Akeake	B	C M
Fuchsia excorticata	Kotukutuku\NZ fuchsia	B	M U
Griselinia littoralis	Broadleaf\Papauma	B	C M U
Hoheria angustifolia	Narrow leaved lacebark	B	M U

Botanical name	Common name(s)	Planting zone	Climate zone
Hoheria sexstylosa	Houhere\Lacebark	B	M U
Kunzea ericoides	Kanuka	B	M U
Leptospermum scoparium	Manuka	B	C M U
Melicytus ramiflorus	Whiteywood\Mahoe	B	C M U
Metrosideros excelsa	Pohutukawa	B	C
Myrsine australis	Mapou/Mapau	B	M U
Olearia lineata var.dartonii	Twiggy tree daisy	B	CM
Olearia paniculata	Akiraho	B	C M
Olearia solandrii	Coastal tree daisy	B	C M
Olearia traversii	Chatham Island Akeake	B	C
Pittosporum crassifolium	Karo	B	C M
Pittosporum eugenoides	Lemonwood\Tarata	B	M U
Pittosporum tenuifolium	Kohuhu	B	M U
Plagianthus regius	Ribbonwood/Manatu	B	M U
Podocarpus totara	Totara*	B	C M U
Pseudopanax arboreus	Five finger\Puahou	B	M U
Pseudopanax crassifolius	Lancewood	B	M U
Pseudopanax laetus	Broad-leaved five finger	B	M U
Sophora microphylla	Kowhai	B	M U

**C = Coastal:** Within approximately 3 kms of coast, plants can tolerate salt winds but some are also susceptible to frost.

**M = Mid ringplain:** Moderate frost and wind tolerance. From 3 kms of coast to 200 metres above sea level (m.a.s.l.).

**U = Upper ringplain:** High frost tolerance, between 200 and 400 m.a.s.l. (up to National Park boundary).

\* Requires extra shelter

See information sheet No.25 - 'Plants for riparian margins' for full details or visit [www.taranakiplants.net.nz](http://www.taranakiplants.net.nz)