

Coastal Plan review:

# Surf breaks and the

## 'Significant Surfing Area'

*What's in the Proposed Plan and what it would mean for surfers and others*

The Taranaki Regional Council is reviewing its Coastal Plan, which is the 'rule book' governing the use, development and protection of what's known as the coastal marine area.

The review is an opportunity to make a great place even better. Our coastline is a physically rugged and special environment that is prized for the recreational opportunities it offers, with surf breaks second to none.

In particular, Taranaki's coastline is unique for its numerous high quality surf breaks and as part of the review, the Council has been looking at the best ways to protect them.

Four surf breaks, Waiwhakaiho, Stent Road, Backdoor Stent and Farmhouse Stent, are protected at a national level through the *New Zealand Coastal Policy Statement*. A further 77 surf breaks have been identified as regionally significant and 59 as locally significant.

The Council has prepared a Proposed Coastal Plan that, among other things, provides a high level of protection to all 140 surf breaks, with the four nationally significant surf breaks having the highest level of protection. The Proposed Plan also identifies a stretch of surf breaks from Kaihihi Road to Cape Road as a 'Significant Surfing Area'. The idea is to recognise and protect their special nature while not interfering with non-surfing activities.

*In a nutshell*

### THE SIGNIFICANT SURFING AREA



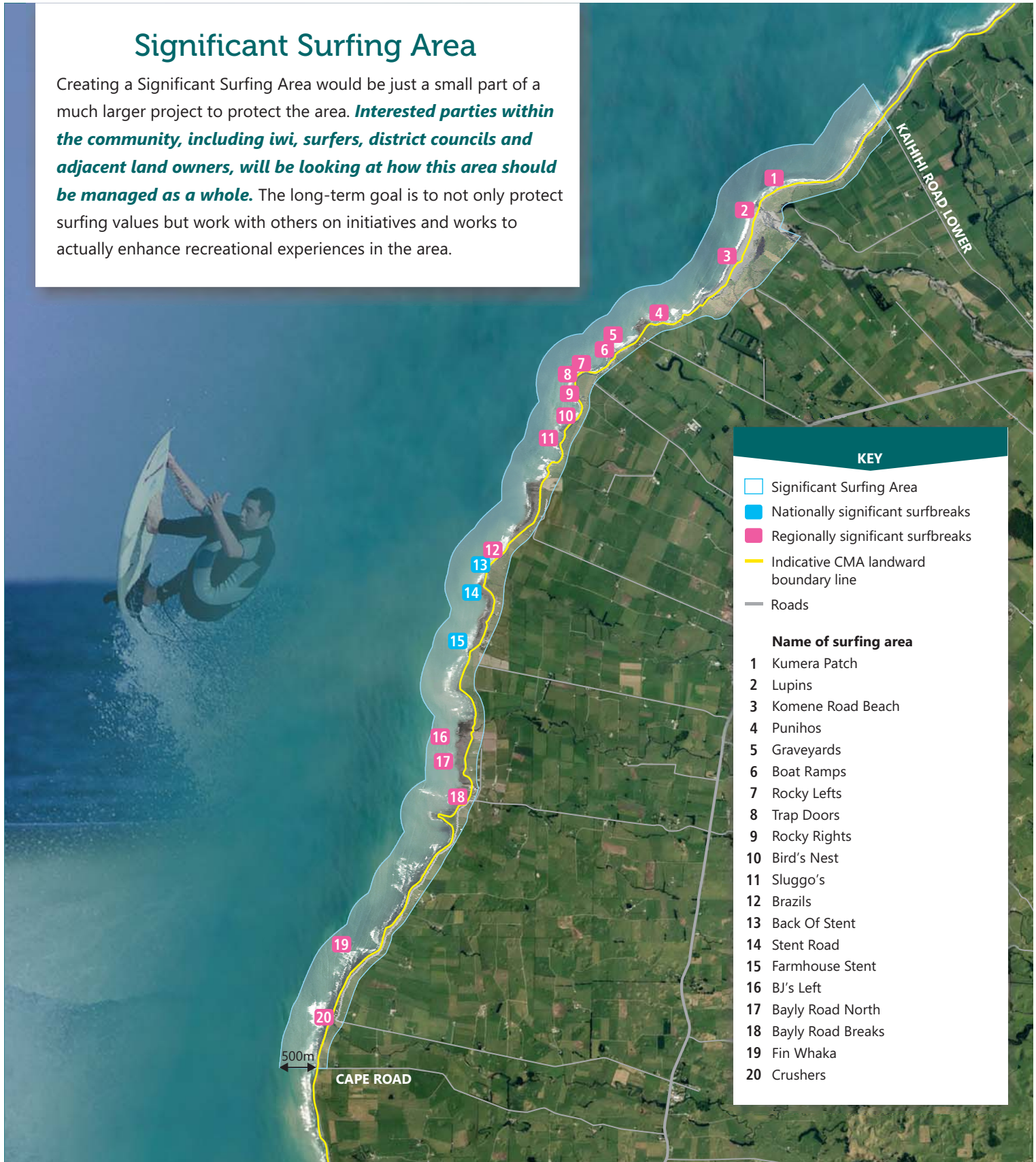
- ✓ Increase protection for the surf breaks, because no development or activity would be allowed to have an adverse effect on them. This is the same level of protection as for nationally significant surf breaks, and a greater level of protection than for other regionally and locally significant surf breaks.
- ✓ Ensure the seascape (views) along this stretch of coast are also more protected than most other areas of the coast.
- ✓ Help to ensure public access and amenity values along this stretch of coast are protected and enhanced.
- ✓ Continue to allow access for other recreational activities.
- ✓ Provide protection for other values including cultural, biodiversity and historic heritage.
- ✓ Be managed with input from interested parties including iwi, surfers, district councils and adjacent land owners.



- ✗ Give surfers or surfing activities any extra precedence over other coastal users or coastal activities.
- ✗ Restrict access to or use of the coast for recreational activities other than surfing.
- ✗ Give the area 'reserve' status under any legislation.
- ✗ Interfere with cultural rights and usages.

# Significant Surfing Area

Creating a Significant Surfing Area would be just a small part of a much larger project to protect the area. **Interested parties within the community, including iwi, surfers, district councils and adjacent land owners, will be looking at how this area should be managed as a whole.** The long-term goal is to not only protect surfing values but work with others on initiatives and works to actually enhance recreational experiences in the area.



## Feedback and more information

Go to [www.trc.govt.nz/coastal-plan-review/](http://www.trc.govt.nz/coastal-plan-review/) to find:

- The Proposed Coastal Plan in full.
- The Section 32 Evaluation Report.
- Other technical and background papers.
- An online form for making a submission to the Council.

### LET US KNOW WHAT YOU THINK

- [www.trc.govt.nz/coastal-plan-review/](http://www.trc.govt.nz/coastal-plan-review/)
- [coastal@trc.govt.nz](mailto:coastal@trc.govt.nz)
- Private Bag 713, Stratford 4352
- 0800 736 222 - we can give you more information, or arrange a meeting.



The deadline for making a submission is 4pm Friday 27 April 2018.

Working with people | caring for Taranaki