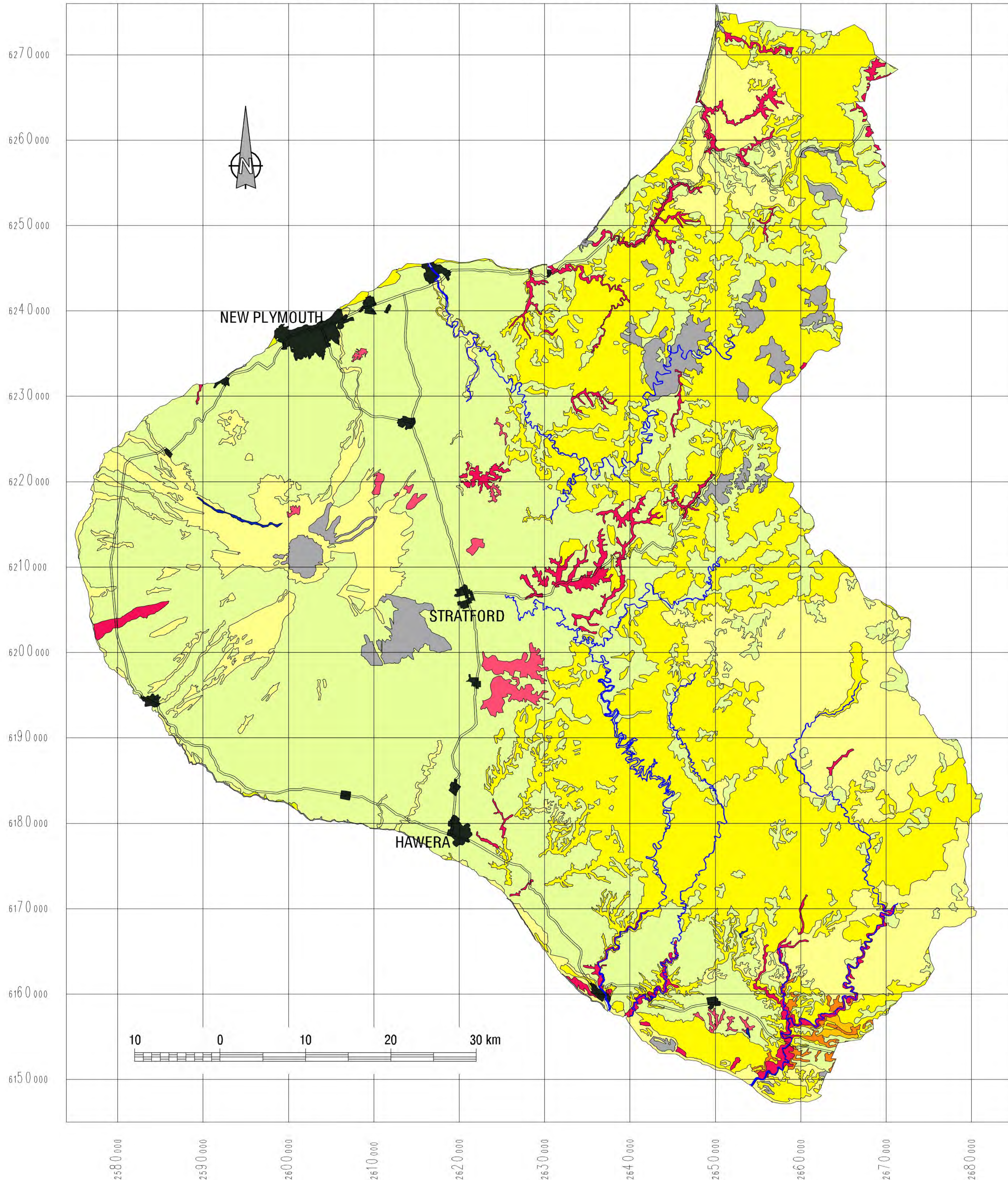


# TOTAL CHROMIUM 0-20cm IN SOILS OF TARANAKI REGION



## LEGEND

Total Chromium (mg/kg on oven-dry weight)

0-20cm depth

Gley		5-120
Organic		5-60
Melanic		30-50
Pallic		25-50
Brown		20-50
Recent		10-50
Allophanic		10-45
Pumice Raw Mountain soil		No data

See accompanying notes on soil groupings and ranges of background metal concentrations

## Topographic Reference

- Major roads
- Major hydrological features
- Urban



Manaaki Whenua  
Landcare Research

© Landcare Research New Zealand Ltd, 2002

Map Reference Code: /data/landcare-jobs/mas/heavymet/chrnzsc20.gra