

Welcome back

I hope you all enjoyed a restful break and are looking forward to another productive term.

My apologies to the teachers who couldn't receive support last term because of a clash of dates and, or tidal restrictions. Rock pool studies seem to be popular in the first term, so with field trip times restricted by the tides it was just not possible to fit everyone in. Our policy remains first in, first served and whilst it can create disappointment for some, it remains the fairest one. The first half of the new term is nearly booked out already, so if you are planning an environmental study involving assistance from me you will need to get in touch very quickly.

Thank you to the secondary school teachers who encouraged their students to apply for selection for this year's Sir Peter Blake Youth Environment Forum held last week in Auckland. Congratulations to Jamie Darbyshire from Hawera High School who was selected, no doubt he had a memorable and exciting time at the forum.

Thank you to the teachers who attended the three professional development rock pool sessions we conducted last term. In addition, two other schools attended special staff meetings at rock pool sites which is a really good idea. I enjoy attending staff or syndicate meetings which often lead to a study later in the term.

You may have noticed a change in the wording of our slogan in recent times. We believe the new one "Working with people, caring for Taranaki" better reflects the functions of the Council. Besides developing, monitoring and enforcing regional rules around the use of core resources, an important part of our work involves getting alongside landowners, industry, community groups and individuals to take practical actions to protect and improve the environment. The Council also runs Civil Defence Emergency Management for the region, and leads the regional push to ensure Taranaki gets the highway network and other transport infrastructure it needs. The Council owns and administers three large public gardens, and is the 100% shareholder of Port Taranaki Limited.

Enjoy the term everyone.

Kevin Archer

New Zealand Shakeout

This issue of SITE looks closely at the nationwide civil defence exercise named New Zealand Shakeout. The exercise is co-ordinated by the Ministry of Civil Defence Emergency Management and supported by the Taranaki CDEM Group. It is hoped that one million people throughout the length and breadth of New Zealand will participate in the "Drop, Cover and Hold" earthquake drill at 9.26am on 26 September. 09.26 on 26.09 should be easy to remember. We encourage all Taranaki schools to register and participate.



New Zealand Shake Out™



New Zealand Shakeout is a national multi-agency earthquake exercise led by the Ministry of Civil Defence and Emergency Management will be held on 26 September 2012.

The Taranaki Civil Defence Emergency Management Group supports the national exercise and encourages the Taranaki community to participate in the exercise and related preparedness activities.

New Zealand Shakeout is based on a model developed in Southern California in 2008. The exercise will consist of a series of events and activities across New Zealand during 'Get Ready Week' (23-29 September 2012) and will culminate in a nationwide 'Drop, Cover and Hold' drill on 26 September 2012.

The aim of the exercise is for everyone who participates to be better prepared to 'Get thru' an earthquake.

Target audiences

There are three target audiences:

- Individuals and households
- Schools
- Businesses



How to participate

- Register your school at www.getthru.govt.nz. You will then be in the count for the Shakeout drill, get email updates, and more.
- Note the time and date in your diary and on your staffroom notice board.
- Make sure your Principal or Board of Trustee staff representative informs the Board of Trustees of your registration.



Between today and 26 September

- Get detailed information at www.getthru.govt.nz (check out the earthquake pages)
- Refer to 'What's the Plan Stan?'
 - The fact sheet on page 59
 - The types of practices and simulations on page 67
 - The emergency response practice and how to run one on pages 68 and 69
 - Preparing the school, running the evacuation exercise and its evaluation on page 70
 - The earthquake scenario cards 3 and 4 on page 76

As a registered New Zealand Shakeout participant you will:

- Learn what you can do to get prepared.
- Be counted in the largest earthquake drill New Zealand has ever seen.
- Receive Shakeout news and other earthquake information.
- Set an example that motivates others to participate.



Many of you will remember Taranaki Blowout which was held in 2010. This was a Taranaki community exercise planned to help people understand our volcano and be ready if it erupts. We were greatly heartened by the number of schools involved in Taranaki Blowout and we hope schools support New Zealand Shakeout in the same way.

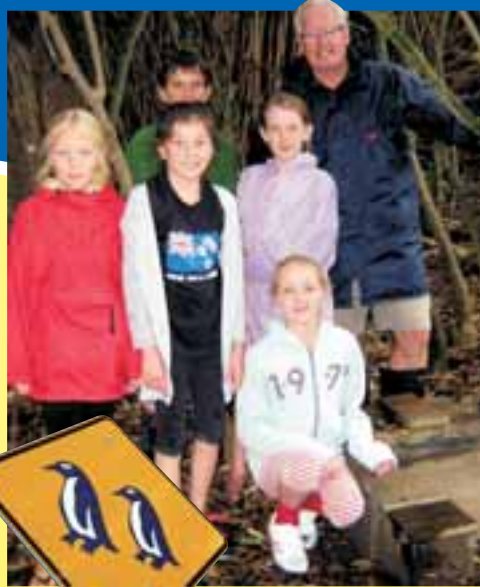
Council assistance

- If your school does not have a copy of "What's the Plan Stan?" contact Kevin or the Ministry of Civil Defence Emergency Management to order one.
- Invite Kevin to talk to your class about New Zealand Shakeout or earthquakes in general and how best to prepare for them.
- Kevin can talk to your class(es) about the importance of having a home emergency kit and what items should be in one.
- Visit the Ministry of Education website www.minedu.govt.nz for assistance with your school emergency management plan.
- Arrange for your class to visit the Taranaki Emergency Management Office (TEMO) in New Plymouth which would be activated in the event of a major earthquake.



Mimi School

Mimi students in their blue penguin motel area. The school has put in a tremendous effort with its blue penguin protection programme.



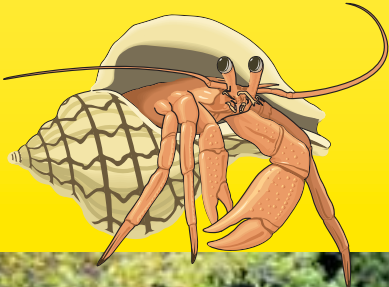
Makahu and Huiakama schools

The students from Makahu and Huiakama schools combined their efforts to examine the water quality of a local stream in March. Weather conditions were far from pleasant but that did not deter the students from working very co-operatively and successfully.



Omata School Rocky Shore visit

The teachers at Omata School had a fine time one afternoon in February at Kawaroa. They were up-skilling themselves prior to the school embarking on a series of rocky shore field trips. Not surprisingly the field trips that followed were of a high calibre and greatly enjoyed by the students, parents and teachers.



Avon School

All classes at Avon School joined forces to assess the water quality of the Patea River in Stratford recently. The students tore into their work with great enthusiasm and if the shrieks of delight, team high-fives and all round excitement could be used for assessment purposes, then the visit would have scored a 10 out of 10.

Bits 'n' Pieces

Paper4trees programme

Well in excess of 2,000 schools are currently involved in the Paper4trees programme which continues to expand throughout New Zealand. As a result 23,829 trees were planted, often in school grounds in 2011. If you want to know more about the programme and how you can get involved, contact details are as follows

EERST Trust Ph: 07 578 7025
PO Box 2523 or 0800 727 4873
Tauranga Fax: 07 578 7065

Email: paper4trees@eerst.co.nz
Web: www.eerst.co.nz

Kiwis helping kiwi family day

The East Taranaki Environment Trust has arranged for Sparky the kiwi from Northland to pay us a visit. Sparky and his owner Robert will be at Bell Block Primary School for two days on **Friday 22nd and Saturday 23rd June**.

All schools are welcome to visit and join in. A gold coin donation per child to help with the cost would be appreciated. Come and see, touch and photograph "Sparky" (a live kiwi).

Please contact the school office for details

Ph: 06 755 0838

Email: office@bellblock.school.nz

Friday 22 June: Learning about kiwi for schools

Saturday 23 June: Family day

**Win cool stuff
for your school**

See the insert for more information regarding the e-waste competition run by the local councils, e-cycle and Lamberts.



Answers from page 3

Word and description match 1.H 2.I 3.A 4.F 5.B 6.D 7.G 8.J 9.E 10.C

Fill the gaps earthquake stone concentric centre events sudden mantle and focus deep surface location epicentre

Earthquake locations

- 1.Chile 2.USA (Alaska) 3.Indonesia (Sumatra)
- 4.Japan 5.Russia (Kamchatka) 6.Chile
- 7.Ecuador(off the coast) 8.USA (Alaska)
- 9.Indonesia (Sumatra) 10. Tibet

Crack the Code An earthquake can strike at any time.

For assistance or information on environmental education contact:

Kevin Archer, *Education Officer*
Taranaki Regional Council
Private Bag 713, Stratford

Ph: 06 765 7127 Fax: 06 765 5097

E-mail: education@trc.govt.nz
www.trc.govt.nz