

KNOW BEFORE YOU GO



A quick reference guide for recreational boats and watercraft in Port Taranaki and its approaches



Might is right

Any vessel under 500 gross tonnage, which includes recreational craft, must give way to any vessel over 500 gross tonnage in Port Taranaki and its approaches. (Maritime Rule Part 91.16)





Don't leave shore without one

- You are legally required to carry life jackets of appropriate sizes for everybody on board your boat. (Maritime Rule Part 91.4).
- It is the skipper's responsibility to ensure life jackets are worn when he or she considers it necessary.

*Have one for everyone
and wear them*





If you can't call for help no-one can rescue you

Take two forms of communication with you.

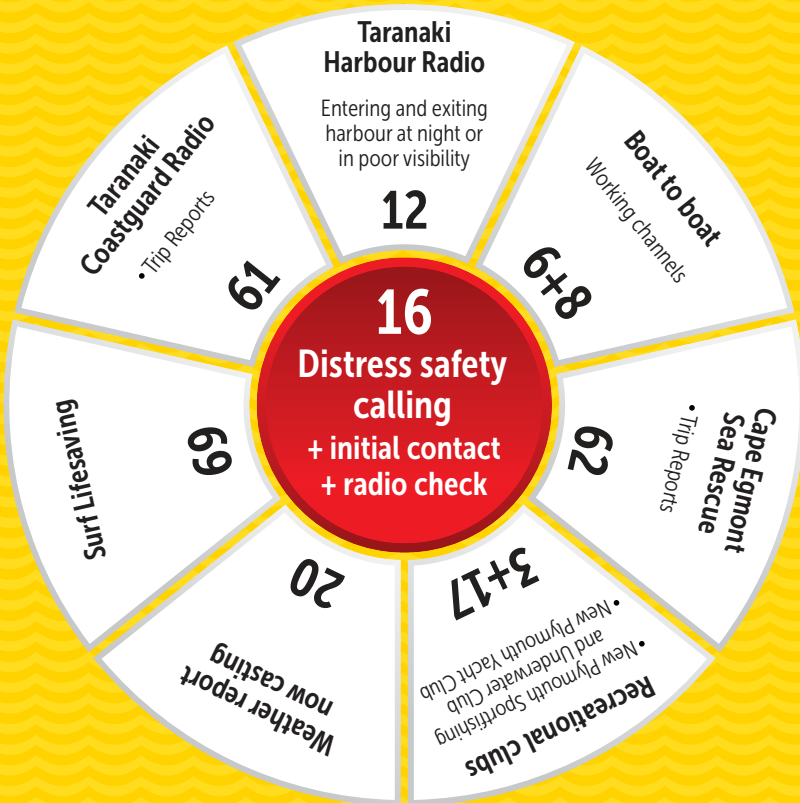
Check battery life in cellphones and EPIRBs,
and use-by dates for flares.





Port Taranaki & Approaches VHF radio channels

VHF radio channels for Taranaki



Mobile phone use:

Emergency Call 111 and ask for the police.

Coastguard *500 Non urgent breakdowns etc.

Taranaki Coastguard Radio 06 757 9562.

Port Taranaki Ltd Watch House 06 759 9740 or 06 751 0200.

(Notifying entry and exit at night or in low visibility only if unable to by VHF)



How to make a voyage or Trip Report

To log a Trip Report (TR) with Taranaki Coastguard using VHF Radio Channel 61:

1. Listen to Channel 61 for approximately 10 seconds.
Check there is no-one else using the frequency.
2. **TARANAKI COASTGUARD RADIO x 3**
YOUR VESSEL NAME AND CALL SIGN (if you have one) **x 3**.
3. **WISHING TO MAKE A 'TR'** – Tango Romeo.
4. Wait for Taranaki Coastguard Radio to acknowledge your call and follow their instructions.
5. Repeat your **VESSEL NAME AND CALL SIGN**.
6. Your **PLACE OF LAUNCHING**.
7. Your **DESTINATION** or **AREA YOU ARE GOING TO**
8. **NUMBER OF PEOPLE ON BOARD**.
9. **ESTIMATED TIME OF RETURN**.
10. **OVER**.
11. Wait for confirmation from Taranaki Coastguard Radio.
12. **VESSEL NAME** and **OUT**.
13. Set a dual watch on VHF Channel 16 and 61.

Remember to cancel your TR when you have arrived safely.

Note: Failing to close a TR will NOT initiate a search.

If you need assistance you must call for help either on VHF Channel 16 or Channel 61.

HELP!

How to make a distress call

Use only if you are in grave and imminent danger and need immediate help!

Activate the distress beacon if carried. Make sure everyone is wearing lifejackets.

Switch radio to full power; follow these instructions:

1. VHF Ch 16.
2. **MAYDAY MAYDAY MAYDAY.**
3. This is **YOUR VESSEL NAME (THREE TIMES).**
4. Call sign **OF THE VESSEL (ONCE - if you have one).**
5. **MAYDAY VESSEL NAME AND CALL SIGN.**
6. Vessel's location.
7. Nature of distress and assistance required.
8. Any other information e.g. number of persons on board, description of vessel, liferaft or dinghy carried.
9. **OVER.**
10. Allow a short time for a reply. If no reply, repeat the distress call on Channel 61.
11. If contact is made with a shore station, tell them if you have activated your distress beacon and follow their instructions.
12. If no radio, or no reply to your radio call, phone 111 and ask for Police.

5

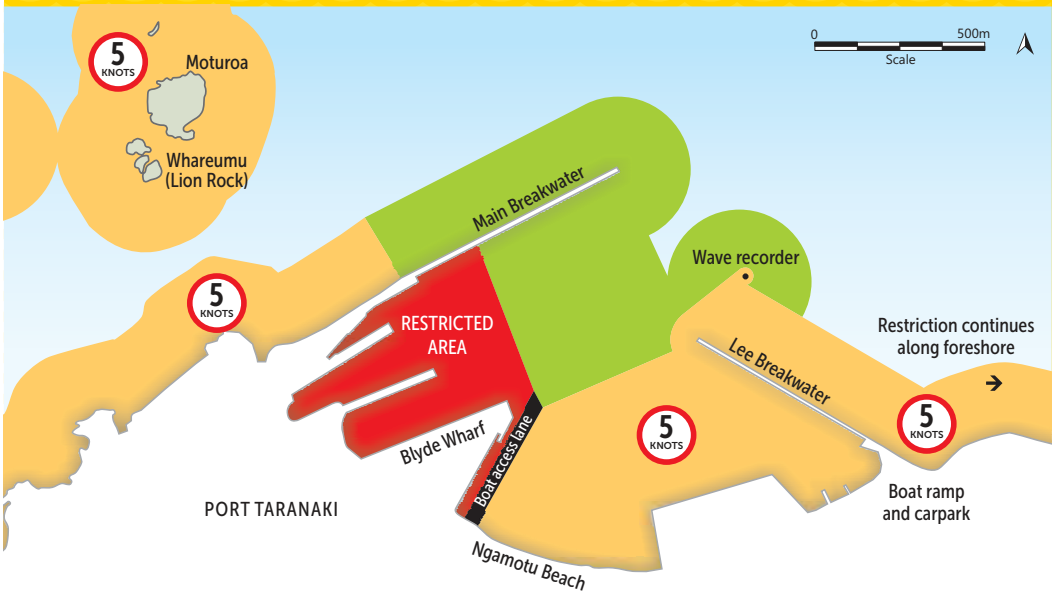
Slow down



Vessels must not exceed 5 knots when within:



- 50 metres of another vessel, raft or person in the water
- 200 metres (2 football fields) of shore or structure, or the inshore side of any row of buoys marking that distance from shore
- 200 metres of any vessel or raft flying Flag A (Diving Flag).

(Maritime Rule Part 91.6)




Port Taranaki By-laws

Breaking the rules may damage property, cause injury or endanger lives. Fines may be issued for breaking the rules.

  5 knot speed restriction within 200m of shore and inside line from Blyde Wharf to end of Lee Breakwater


 **Restricted Area**
No unauthorised personnel or vessels

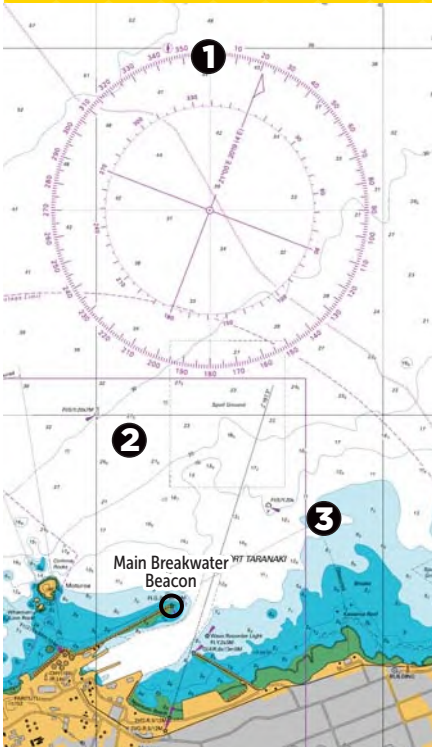
 **Speed restrictions uplifted**

 **Boat access lane**
5 knot speed limit.



Look out for

1 Pilot boarding ground - shown on 'Chart NZ4432 Taranaki Roads' by this symbol . It bears directly north of the Main Breakwater Beacon at a distance of 3.0 nautical miles. There are no boundaries to it.



The pilot boarding ground is a where a harbour pilot is transferred from a pilot vessel to a large ship while underway. Both vessels are deemed to be 'Restricted in their Ability to Manoeuvre' as defined in Rule 3 (g) (iii) of the Collision Regulations.

You should keep well clear of large vessels in this area and avoid anchoring near it.



2 AXYS Buoy

This is a 'Special Mark' weather monitoring buoy owned by Port Taranaki Ltd. It is located 1.12 nautical miles north west of the Main Breakwater Beacon. By night it has a light flashing three times every 10 seconds (Fl(3)Y.10s).



3 Waverider Buoy

This is also a 'Special Mark' weather monitoring buoy owned by Port Taranaki Ltd. It's located 0.86 nautical miles north east of the Main Breakwater Beacon. By night it has a light flashing five times every 20 seconds (Fl(5)Y.20s).



Wake

Your vessel's wake must not cause unnecessary danger or risk of damage to other vessels, or structures, or harm to other persons (Maritime Rule Part 91.7).

Be particularly aware of your vessel's wake while underway in the swing mooring area, around the floating pontoons and along the inner Lee Breakwater.

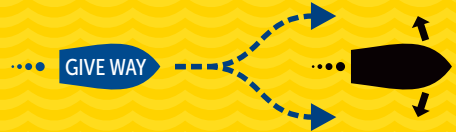




Give way

Vessels overtaking:

Every overtaking boat gives way (this includes sail boats).



Power driven vessels head on:

Both alter to starboard (right side).



Power driven vessels crossing:

Power driven vessels give way to others on their starboard (right) side.

- Give way boats should cross behind.
- Sailing boats have different rules.



There is a maximum speed of 5 knots for all vessels:

- Within 200 metres of shore or dive flag.
- Within 50 metres of all boats or swimmers.





Diver down?

If you are diving from a boat, or are the skipper of a boat with a diver down, you must ensure that Flag A is displayed high enough that it can be clearly identified by other boats from a distance of at least 200 metres. (Maritime Rule Part 91.18 (3))

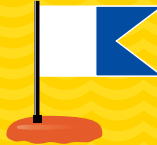
Failure to comply can put the diver at risk of injury and/or the skipper at risk of a \$200 fine.

See a float – slow your boat

If you see this flag you must slow down to 5 knots within 200 metres (the length of 2 football fields).

Code Flag A - minimum size, 600 x 600mm.

Smaller spear fishing floats identify snorkellers



See a float – slow your boat

If you see this flag you must slow down to 5 knots within 200 metres





It takes 3 to ski

Any vessel (including a jet ski) towing a person on a wakeboard, biscuit, skis or anything else must have an observer (over 10 years old) watching the person being towed (bylaw 3.8).

Always travel in and out of a water-ski lane on your starboard (right) side.





Can you be seen?

Navigation lights must be shown from sunset to sunrise, and during conditions of restricted visibility (Maritime Rule Part 22 section 2 – Lights and Shapes).

Boats of less than 7 metres length and not capable of more than 7 knots, including kayaks and paddlecraft, may carry navigation lights or must simply display an all-round white light.



Power driven vessels, underway and less than 12 metres in length, may combine their stern and masthead lights into a single all-round white masthead light. The boat should also have red (port) and green (starboard) sidelights.



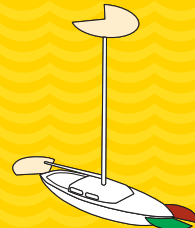
Power driven vessels greater than 12 metres in length should show a white masthead light, red and green sidelights and a white stern light.



Sailing boats, underway and not using power, must show sidelights and a stern light. These may be combined into a tri-colour lantern at the top of the mast on sailing boats less than 20 metres in length.



Sailing boats under auxiliary motor power should display their sidelights and stern light as well as a masthead light. You should not use a tri-colour lantern when motoring.





- Coastguard Boating Education Theory tutors and Practical Instructors
- NZ Dayskipper Certificate
- NZ Boatmaster Certificate
- Marine VHF operators certificate
- NZ Marine Radio Operators Certificate
- Outboard Maintenance
- Inboard Maintenance Radar Course
- GPS operator course
- Bar Crossing Practical
- Powerboat Handling
- Personal Watercraft Course
- Launch Handling
- Courses tailored to your boat and type of boating
- 1 on 1 tuition, small and large groups

 **46south**

 **027 405 2151**

 **ericacole@outlook.co.nz**



Become a Coastguard member

www.coastguard.nz

For more information

Harbourmaster: 027 544 6912

