

Irrigation Water
Compliance Monitoring Programme
Annual Report
2015-2016

Technical Report 2016-49

ISSN: 1178-1467 (Online)
Document: 1781017 (Word)
Document: 1804710 (Pdf)

Taranaki Regional Council
Private Bag 713
STRATFORD

January 2017

Executive summary

This is the 13th Annual Report issued by the Taranaki Regional Council (the Council) to report on compliance monitoring programmes for resource consents authorising the abstraction of freshwater for irrigation purposes in Taranaki. This report for the period July 2015–June 2016 encompasses the data collected for compliance monitoring for resource consents for pasture irrigation, horticultural and golf course irrigation; as per the recommendations from the previous report.

Water is a public resource and the authorisation to take it is granted through resource consent. Associated with that permission is a public expectation that the water will be used efficiently, an expectation that can be better met if the actual amounts of water taken are accurately measured and recorded. Maintaining environmentally appropriate residual flows in streams and rivers to protect aquatic habitat is of primary concern to the Council when assessing water take applications. Monitoring of compliance with consent conditions is then required to ensure that any significant adverse effects as a result of authorised water takes are avoided.

At 30 June 2016, a total of 76 resource consents to take and use freshwater for irrigation purposes were registered in the Council's databases. Of that number, 57 were for pasture irrigation, 9 for horticultural activities and 10 for recreational purposes (golf clubs). Sixty-four consents authorised abstractions from surface water (84%) while 12 (16%) utilised groundwater sources. A total of 60 irrigation consents were exercised during the 2015-2016 monitoring year.

The 2015-2016 monitoring programmes for irrigation water permits comprised a range of various components, including liaison with consent holders, site inspections, water take data collection, residual flow monitoring, water quality analysis, data review and compliance assessments. The specific range of monitoring carried out in relation to each consent is dictated by the water source, weather and flow conditions and system design. It was a busy season for the Council's hydrological monitoring team, as the weather conditions meant the demand for irrigation was high, with irrigation starting as early as the middle of October.

The Council carried out compliance monitoring inspections at 68 sites during the 2015-2016 irrigation season. The inspections included visual checks of the intake structures, screens, staff gauges, fencing around the pump sheds, downloading of data and stream gaugings.

For the summer irrigation period, the rainfall recorded at the Council's monitoring locations ranged between 61% and 86% of historical mean values. This resulted in rivers and streams running well below mean flows for the period. The low stream flows necessitated close and frequent monitoring by the Council to ensure ecological flows were maintained in those waterways being used to supply water for irrigation. During the period under review, compliance with residual flow conditions for surface water abstractions was assessed by the Council on a total of 73 separate occasions, across 28 waterways. Some irrigators were still taking water in early May 2016.

Consent holder performance was assessed based on compliance with their authorised abstraction rates/volumes, maintenance of minimum residual flows, provision of abstraction records and all other general conditions of their consent(s).

The Council was required to enter a total of 17 incidents over the course of the 2015-2016 period in relation to irrigation consents. These incidents were reported to Council and staff implemented appropriate responses as they were identified. This included the issuing of seven abatement notices and one infringement notices.

During the 2015-2016 year, 47% of exercised irrigation consents in Taranaki achieved a high level of environmental performance and compliance with their consents, while 20% require improvement in their compliance performance.

For reference, in the 2015-2016 year, 71% of consent holders in Taranaki monitored through tailored compliance monitoring programmes achieved a high level of environmental performance and compliance with their consents, while another 24% demonstrated a good level of environmental performance and compliance with their consents.

In addition to the conditions of resource consents for water abstractions, The Resource Management (Measurement and Reporting of Water Takes) Regulations 2010 place further legislative requirements on holders of consents for water abstractions greater than five litres per second. These include specific requirements for the installation of water measuring devices, verification of the accuracy of water measuring devices and data reporting. The Regulations allow for a staged implementation of the requirements, dependent on abstraction rate. All abstractions are to be compliant with the Regulations by 10 November 2016. The Council will continue to enforce implementation of the Regulations during forthcoming monitoring periods.

This report includes recommendations for the 2016-2017 year.

Table of contents

	Page
1. Introduction	1
1.1 Compliance monitoring programme reports and the Resource Management Act 1991	1
1.1.1 Introduction	1
1.1.2 Structure of this report	1
1.1.3 The Resource Management Act 1991 and monitoring	1
1.1.4 Regional Freshwater Plan	2
1.1.5 Evaluation of environmental and administrative performance	2
1.1.6 Regional freshwater allocation	4
1.1.7 Irrigation zones	5
1.1.8 Irrigation systems	6
1.1.9 Environmental effects of exercising water permits	9
1.2 Climatological data and irrigation requirements	10
1.2.1 Droughts in Taranaki	12
1.3 Monitoring programme	13
1.3.1 Introduction	13
1.3.2 Programme liaison and management	13
1.3.3 Site inspections	14
1.3.4 Measuring and reporting of water takes	14
1.3.5 Residual flow monitoring	16
1.3.6 Data review and compliance assessment	16
1.3.7 Groundwater quality assessment	17
2. Results	18
2.1 Site inspections	18
2.2 Residual flow compliance	18
2.3 Water usage and compliance assessment	19
2.4 Groundwater quality results	20
2.5 Investigations, interventions, and incidents	20
3. Discussion	23
3.1 Discussion of site performance	23
3.2 Evaluation of performance	24
3.3 Recommendations from the 2014-2015 Annual Report	26
3.4 Alterations to monitoring programmes for 2016-2017	27
4. Recommendations	28
Glossary of common terms and abbreviations	29
Bibliography and references	30
Appendix I Example surface water abstraction permit for irrigation	

Appendix II Active irrigation consents in Taranaki July 2015 to June 2016

Appendix III Water take consent usage for 2015-2016

Appendix IV Report on consented water permits for farm and general water supply purposes

List of tables

Table 1	Total rainfall from 1 October 2015 to 30 April 2016 versus historical mean values	10
Table 2	Stream gaugings below residual flow requirements	18
Table 3	Groundwater quality results	20
Table 4	Consents found to be in breach and the incidents registered	21
Table 5	Individual performance for all irrigation consent holders	24

List of figures

Figure 1	Percentage of water irrigation allocation per activity in the Taranaki region	5
Figure 2	Source of water for irrigation in Taranaki during the 2015-2016 period	5
Figure 3	Total consented water abstractions – distributed by activity 2015-2016	6
Figure 4	Pasture irrigation zones and locations of consented irrigation in Taranaki	7
Figure 5	Distribution map of the total rainfall recorded from 1 October 2015 to 31 March 2016	12

List of photos

Photo 1	Mosaic of pictures depicting k-line and long-lateral type irrigation	8
Photo 2	Mosaic of pictures depicting centre pivots	8
Photo 3	Picture depicting travelling irrigator system	8
Photo 4	Good installation of a flowmeter	16
Photo 5	Poor installation of a flowmeter	16

1. Introduction

1.1 Compliance monitoring programme reports and the Resource Management Act 1991

1.1.1 Introduction

This report is for the period July 2015-June 2016 by the Taranaki Regional Council (the Council) describing the monitoring programmes for resource consents authorising the abstraction of freshwater for irrigation purposes in Taranaki.

This report covers the data collected for compliance monitoring for resource consents for pasture irrigation, horticultural and golf courses; as per the recommendations from the previous report. This is the 13th annual report to be prepared by the Council to report on compliance monitoring programmes for irrigation water in Taranaki.

Irrigation in this report does not refer to any effluent (wastewater) application; it applies to the use of freshwater to supply dry soils with enough moisture for assisting in growing pasture. In pasture production, irrigation is mainly used to replace precipitation during periods of drought and to fulfil crop water requirements.

1.1.2 Structure of this report

Section 1 of this report is a background section. It sets out general information about:

- consent compliance monitoring under the RMA and the Council's obligations;
- the Council's approach to monitoring water takes through annual programmes;
- the resource consents held for water takes across various catchments;
- the nature of the monitoring programme in place for the period under review; and
- a description of irrigation activities conducted in each catchment.

Section 2 presents the results of monitoring during the period under review, including scientific and technical data.

Section 3 discusses the results, their interpretations, and their significance for the environment.

Section 4 presents recommendations to be implemented in the 2016-2017 monitoring year.

A glossary of common abbreviations and scientific terms, and a bibliography, are presented at the end of the report.

1.1.3 The Resource Management Act 1991 and monitoring

The RMA primarily addresses environmental 'effects' which are defined as positive or adverse, temporary or permanent, past, present or future, or cumulative. Effects may arise in relation to:

- (a) the neighbourhood or the wider community around an activity, and may include cultural and social-economic effects;
- (b) physical effects on the locality, including landscape, amenity and visual effects;

- (c) ecosystems, including effects on plants, animals, or habitats, whether aquatic or terrestrial;
- (d) natural and physical resources having special significance (for example recreational, cultural, or aesthetic); and
- (e) risks to the neighbourhood or environment.

In drafting and reviewing conditions on discharge permits, and in implementing monitoring programmes, the Council is recognising the comprehensive meaning of 'effects' inasmuch as is appropriate for each activity. Monitoring programmes are not only based on existing permit conditions, but also on the obligations of the RMA to assess the effects of the exercise of consents. In accordance with Section 35 of the RMA, the Council undertakes compliance monitoring for consents and rules in regional plans, and maintains an overview of the performance of resource users and consent holders. Compliance monitoring, including both activity and impact monitoring, enables the Council to continually re-evaluate its approach and that of consent holders to resource management and, ultimately, through the refinement of methods and considered responsible resource utilisation, to move closer to achieving sustainable development of the region's resources.

1.1.4 Regional Freshwater Plan

Section 14(1)(a) of the RMA stipulates that no person may take, use, dam, or divert any water unless the activity is expressly allowed for by a resource consent, or a rule in a regional plan, or meets criteria set out in Section 14(3) of the RMA.

The Regional Freshwater Plan for Taranaki (RFP) became operative on 8 October 2001. It is a statutory document which outlines the Council's policy with respect to activities in relation to freshwater under the RMA.

Rule 15 of the RFP provides for the abstraction of up to 50 cubic metres per day (m³/day) of surface water at a maximum rate of 1.5 litres per second (L/s) as a permitted activity for each certificate of title. The same provision applies for groundwater under Rule 48 of the RFP. The permitted allocations (*as of right entitlements*) allow for reasonable domestic and stock water needs without the need for a resource consent, provided that other conditions of the permitted rules are satisfied.

However, most irrigation abstractions demand significantly more water than the daily permitted allocation and consequently require resource consents. Appendix I gives an example of a typical set of conditions for a consent to take and use surface water for irrigation purposes.

1.1.5 Evaluation of environmental and administrative performance

Besides discussing the various details of the performance and extent of compliance by the consent holders, this report also assigns a rating as to each Company's environmental and administrative performance during the period under review.

Environmental performance is concerned with actual or likely effects on the receiving environment from the activities during the monitoring year. **Administrative performance** is concerned with the Company's approach to demonstrating consent compliance in site operations and management including the timely provision of

information to Council (such as contingency plans and water take data) in accordance with consent conditions.

Events that were beyond the control of the consent holder and unforeseeable (that is a defence under the provisions of the RMA can be established) may be excluded with regard to the performance rating applied. For example loss of data due to a flood destroying deployed field equipment.

The categories used by the Council for this monitoring period, and their interpretation, are as follows:

Environmental Performance

- **High:** No or inconsequential (short-term duration, less than minor in severity) breaches of consent or regional plan parameters resulting from the activity; no adverse effects of significance noted or likely in the receiving environment. The Council did not record any verified unauthorised incidents involving significant environmental impacts and was not obliged to issue any abatement notices or infringement notices in relation to such impacts.
- **Good:** Likely or actual adverse effects of activities on the receiving environment were negligible or minor at most. There were some such issues noted during monitoring, from self reports, or in response to unauthorised incident reports, but these items were not critical, and follow-up inspections showed they have been dealt with. These minor issues were resolved positively, co-operatively, and quickly. The Council was not obliged to issue any abatement notices or infringement notices in relation to the minor non-compliant effects; however abatement notices may have been issued to mitigate an identified potential for an environmental effect to occur.

For example:

- High suspended solid values recorded in discharge samples, however the discharge was to land or to receiving waters that were in high flow at the time;
- Strong odour beyond boundary but no residential properties or other recipient nearby.
- **Improvement required:** Likely or actual adverse effects of activities on the receiving environment were more than minor, but not substantial. There were some issues noted during monitoring, from self reports, or in response to unauthorised incident reports. Cumulative adverse effects of a persistent minor non-compliant activity could elevate a minor issue to this level. Abatement notices and infringement notices may have been issued in respect of effects.
- **Poor:** Likely or actual adverse effects of activities on the receiving environment were significant. There were some items noted during monitoring, from self reports, or in response to unauthorised incident reports. Cumulative adverse effects of a persistent moderate non-compliant activity could elevate an 'improvement required' issue to this level. Typically there were grounds for either a prosecution or an infringement notice in respect of effects.

Administrative performance

- **High:** The administrative requirements of the resource consents were met, or any failure to do this had trivial consequences and were addressed promptly and cooperatively.
- **Good:** Perhaps some administrative requirements of the resource consents were not met at a particular time, however this was addressed without repeated interventions from the Council staff. Alternatively adequate reason was provided for matters such as the no or late provision of information, interpretation of 'best practical option' for avoiding potential effects, etc.
- **Improvement required:** Repeated interventions to meet the administrative requirements of the resource consents were made by Council staff. These matters took some time to resolve, or remained unresolved at the end of the period under review. The Council may have issued an abatement notice to attain compliance.
- **Poor:** Material failings to meet the administrative requirements of the resource consents. Significant intervention by the Council was required. Typically there were grounds for an infringement notice.

For reference, in the 2015-2016 year, 71% of consent holders in Taranaki monitored through tailored compliance monitoring programmes achieved a high level of environmental performance and compliance with their consents, while another 24% demonstrated a good level of environmental performance and compliance with their consents

1.1.6 Regional freshwater allocation

At 30 June 2016, there were a total of 76 resource consents to take and use freshwater for irrigation purposes. Fifty-seven consents were for pasture irrigation, nine for irrigation associated with horticultural activities and ten for recreational purposes (e.g. golf course watering) (Figure 1).

Surface water is the predominant source of water for irrigation, accounting for 64 of the 76 consented water abstractions (84%). The remaining 12 consents (16%) authorise abstractions from groundwater (Figure 2).

The relatively low yields from Taranaki's aquifers are rarely sufficient to supply an entire irrigation system, and hence groundwater usage as a primary source of irrigation water is uncommon across the region. Typically, groundwater abstractions are used to supplement surface water irrigation supply.

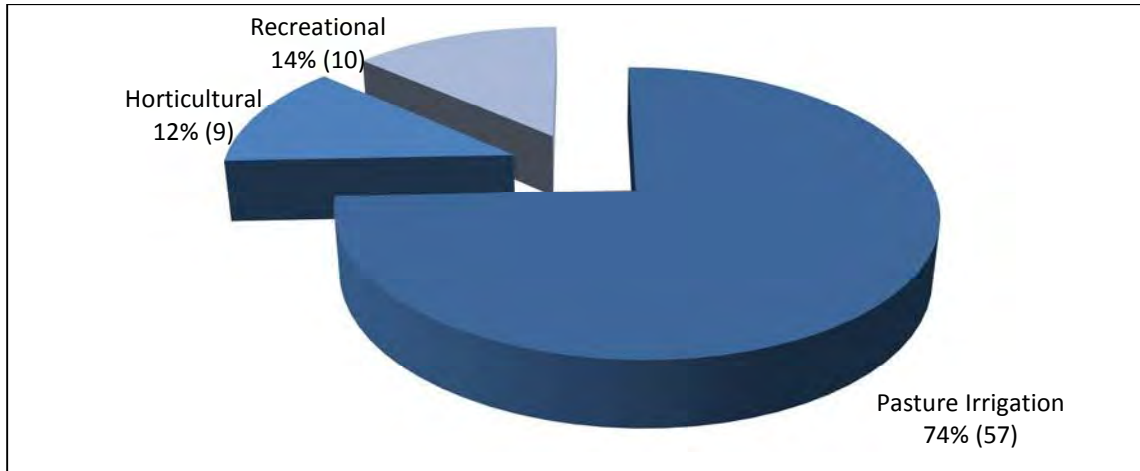


Figure 1 Percentage of water irrigation allocation per activity in the Taranaki region

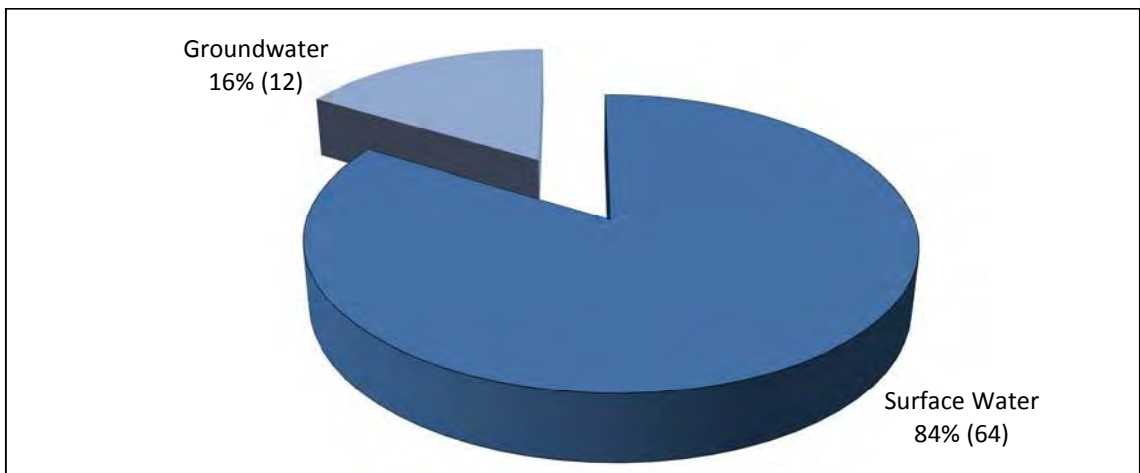


Figure 2 Source of water for irrigation in Taranaki during the 2015-2016 period

The breakdown of freshwater allocation in the region indicates that pasture irrigation represents 29% of the total consented water abstractions in Taranaki. Other types of irrigation (horticultural and recreational) account for approximately 10%, with other uses¹ accounting for the majority (61%) of the total water allocation across the region (Figure 3).

Appendix II lists all irrigation water take consents that were active during the 2015-2016 monitoring year.

1.1.7 Irrigation zones

A regional study commissioned for the Council in 2002 (Rout, 2003) identified eight irrigation zones based mainly on climate. The zones were characterised by different

¹ Includes: Aquaculture, Building Construction/Drainage/Flood Control, Chemical Processing/Manufacturing, Dairy Farm, Dairy Processing/Manufacturing, Dry Stock Farm, Hydrocarbon Exploration/Service Facilities, Landfills, Local Authorities, Meat and By-Product Processing, Petrochemical Processing, Piggery Farms, Poultry Farms, Power Generation – HydroPower Generation & Thermal, Quarries, Recreation/Tourism/Cultural, Road/Bridge Construction or Maintenance, Sewage Treatment, Swimming Pools, Timber Treatment or Sawmills, Water Supply or Treatment.

parameters in terms of system management and financial return. Each zone, and the location of all current irrigation consents are illustrated in Figure 4.

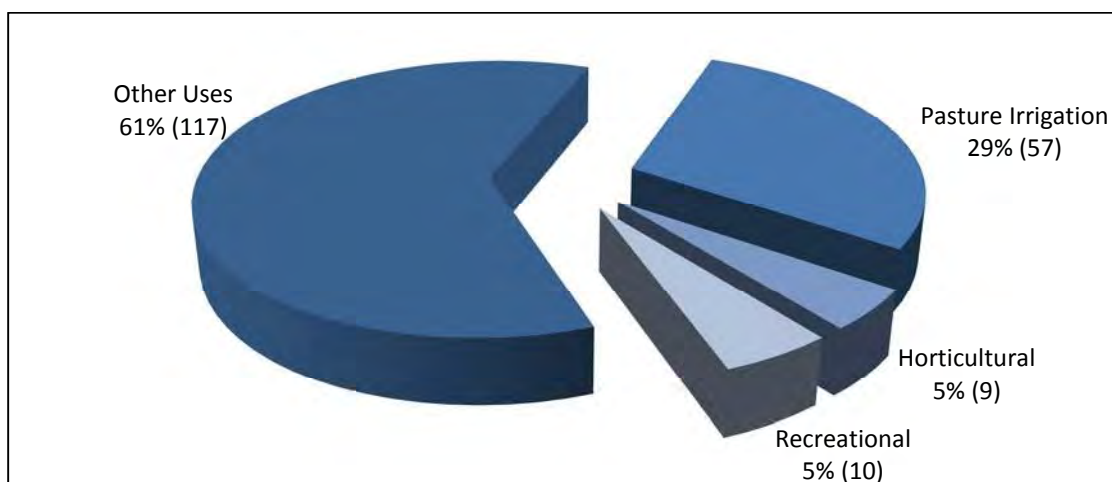


Figure 3 Total consented water abstractions – distributed by activity 2015-2016

The modelling exercise identified zones with the most potential for pasture irrigation requirements were Normanby (*Zone 2*), Inaha (*Zone 3*), Hawera (*Zone 4*) and Opunake (*Zone 5*).

As illustrated in Figure 4, the vast majority of pasture irrigation in Taranaki does take place within Zones 2, 3, 4 and 5, which represent a 10 km wide belt of coastal land stretching from Oakura to Waitotara. The remainder of irrigators are generally located inland, between Inglewood and Eltham.

1.1.8 Irrigation systems

In general there are two types of irrigation methods; surface and pressurised. The majority of irrigation systems currently in operation in the province fall in to the pressurised category. Pressurised systems can be further differentiated based on the method of operation and equipment used. A summary of the systems encountered in the region is given below:

K-line and long-lateral types – Impact sprinklers mounted on moveable laterals (Photo 1).

These are the most common systems found in the region, as they are a low cost option and are relatively easy to operate. They can easily be adapted to fit in with existing farm layouts and are especially suitable for windy conditions. However, these systems are labour intensive, as they need to be moved manually on a regular basis.

Centre pivot type – spray nozzles mounted on a movable lateral (Photo 2)

Centre pivot type systems are automatically controlled, so have a low labour input. They are low maintenance and have versatility in application rates and are desirable on steep, rocky or uneven soils. However, they are a high capital cost option and can be expensive to run due to electricity costs.

Travelling irrigators-spray nozzles mounted on fixed or rotating boom (*rotary boom, fixed boom, gun irrigator, effluent irrigator*) (Photo 3)

Travelling irrigators are a low capital cost option, and are simple to operate. They can cover a large irrigation area and there is some control over the application rate. However, these systems do not perform well in windy conditions, and tend to apply uneven amounts of water, especially at the end of a run.

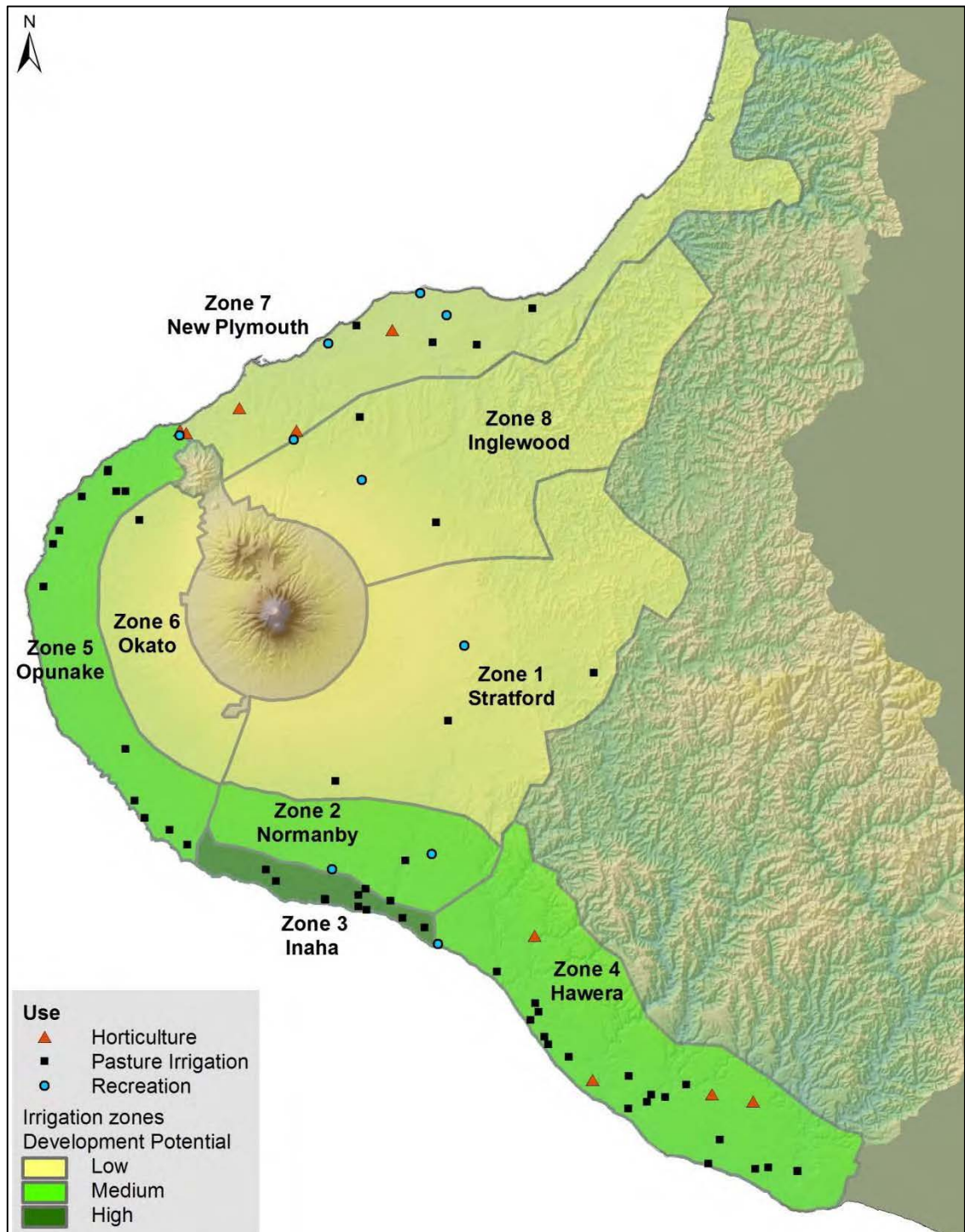


Figure 4 Pasture irrigation zones and locations of consented irrigation in Taranaki



Photo 1 Mosaic of pictures depicting k-line and long-lateral type irrigation



Photo 2 Mosaic of pictures depicting centre pivots



Photo 3 Picture depicting travelling irrigator system

The predominant irrigation system used in Taranaki is the K-line, accounting for 49% of all systems in use. Thirteen percent of irrigation consent holders operate solely with centre pivots, 8% operate traveling irrigators, while 17% operate more than one type of system on their farm. The remaining 13% of consent holders are yet to install irrigation infrastructure.

Appendix II lists the type of system operated by each consent holder.

1.1.9 Environmental effects of exercising water permits

Environmental effects of water abstraction can include a loss of aquatic habitat and biodiversity, and impacts on cultural, recreational and aesthetic values of waterbodies. In an effort to reduce such impacts, the Council encourages the efficient use of water through technical irrigation system design, and maintenance and management practices that help with the achievement of high irrigation efficiencies.

Surface water abstractions

Expected periods of peak irrigation water demand normally coincide with periods of low flows in rivers and streams. During these periods, the Council closely monitors river flows and the exercising of water permits.

The majority of surface water permits for irrigation require the abstraction to cease when the flow in the river providing water for irrigation reaches, or falls below, a specified level (minimum/residual flow). Policy 6.1.5 of the RFWP states that at least two-thirds of habitat within a river or stream is to be retained at mean annual low flow (MALF) levels. This figure has been derived for protection of habitat requirements for brown trout, and is considered conservative for native species.

For many smaller waterways, two-thirds habitat roughly equates to two-thirds MALF, however, the cut-off flow level on many irrigation abstraction consents is in practice generally set at MALF. It is the responsibility of the consent holder to ensure compliance with consent conditions at all times.

In certain coastal streams, and under certain flow conditions, tidal movements can result in the migration of saline water upstream from the coastal margin. The abstraction and application of saline or brackish water to land can have adverse effects on pumping and irrigation equipment, crops and soils.

Groundwater abstractions

The abstraction of groundwater for use in irrigation supply has the potential to lower groundwater levels in the vicinity of the pumping bore. The potential effects of any groundwater abstraction are assessed by the Council during the processing of a resource consent application for a groundwater take. The potential impact of any new take on existing groundwater users, and ecological receptors form a major component of this assessment.

Groundwater levels in coastal bores should generally be maintained above mean sea level to avoid the risk of sea water intrusion into freshwater aquifers. Increased salinity in previously fresh groundwater can result in significant adverse ecological effects, adversely impact on existing groundwater users and potential future use.

Fortunately in Taranaki, the risk of saltwater intrusion is low due to the limited number of high yielding coastal bores. The Council does however monitor water indicators at five coastal sites as part of irrigation monitoring programmes, in order to assess any changes in groundwater composition as a result of abstraction.

Nutrient loading

Irrigated pasture typically supports higher stock numbers compared with non-irrigated pasture and consequently a higher nutrient (nitrate) loading per hectare. This is particularly the case in areas where the underlying soils are free-draining. Irrigation schemes in Zones 2, 3 and 4 occur in areas where groundwater is known to be at risk of nitrate contamination given the drainage characteristics of soils in those zones (TRC 1998, 2005). Careful management of irrigation water and fertiliser application regimes is therefore required to minimise the risk of groundwater and surface water contamination.

1.2 Climatological data and irrigation requirements

The Council provides live on-site data on soil moisture, precipitation and temperature via its website. Eight sites along the southern coastline provide climatological information about the most intensively developed irrigation zones.

Irrigation in Taranaki dairy farms usually occurs over a three to six month period depending on location and climatic conditions. Irrigation for the 2015-2016 season commenced for many in mid October, with all consent holders that exercised their consent having taken water by late December. Irrigation continued for the majority of dairy farmers until late March, but there were a few still irrigating into early May. The rainfall sites along the southern and coastal belt only received 61% to 76% of normal for the period 1 October 2015 to 30 April 2016, as is shown in Table 1. Rainfall gradients across the region are illustrated in Figure 5.

Rainfall has a direct impact not only on river and stream flows but on the amount of water recharging the region's aquifers, which also contribute baseflow to surface water systems. Rainfall recharge is critical to maintain groundwater levels and thus the potential to supply water in the zones where there is more pressure on surface water resources.

Table 1 Total rainfall from 1 October 2015 to 30 April 2016 versus historical mean values

Site	Total rainfall 1 October 2015 to 30 April 2016 (mm)	Mean rainfall October to April (mm)	October to April 2015-2016 rainfall as a proportion of mean value
Nth Egmont	2,284	3,696	62%
Dawson Falls	2,077	2,913	71%
Kahui Hut	2,196	2,540	86%
Mangorei at Reservoir	739	972	76%
Brooklands Zoo	668	810	82%
Wastewater	492	730	67%
Motunui	535	709	75%
Egmont Village	952	1,282	74%
Everett Park	799	1,100	73%
Inglewood	959	1,282	75%
Stratford (311m)	708	1,030	69%

Site	Total rainfall 1 October 2015 to 30 April 2016 (mm)	Mean rainfall October to April (mm)	October to April 2015-2016 rainfall as a proportion of mean value
Mangaehu	634	802	79%
Kotare	968	1,151	84%
Kaka Rd – Uruti (280m)	893	1,230	73%
Pohokura Saddle (300m)	807	1,058	76%
Stony	799	981	81%
Kapoaiaia – Cape Egmont	547	717	76%
Taungatara	567	856	66%
Kaupokonui	379	588	64%
Duffys - Hawera	390	567	69%
Patea	379	575	66%
Charlies	667	840	79%
Moana Trig	687	832	83%
Rimunui Stn Waitotara	533	708	75%
Ngutuwera	416	682	61%

Accurate interpretation of climatological data is important for the planning, scheduling and operation of efficient irrigation systems. Precipitation and evapotranspiration data are fundamental to carrying out reliable water budget calculations and calculations of crop (pasture) water requirements. Crop water requirements can be defined as the depth of water needed to offset the loss of water through evapotranspiration. In other words, for any period of time, the net irrigation requirement is the amount of water which is not effectively provided by rainfall.

The calculated amounts of irrigation water to be efficiently applied to pasture, should also account for the water that is lost while transporting it from its source to the pasture root zone. Some of the losses that need to be estimated are those which occur due to leakage from pipelines and evaporation from droplets sprayed through the air. To compensate for these losses, additional water must be pumped than that required to be stored in the pasture root zone. The gross irrigation requirement then, is the total amount that must be pumped which takes into consideration the irrigation efficiency.

The third variable that should be accounted for when planning and operating irrigation systems is soil moisture. Some of the water that is required by the pasture may already be held in the soil, so it is critical to quantify it. There is no extra value in applying more water than the soil can hold, this only results in unnecessary costs and wastage. The only reliable way of knowing how much irrigated water can be stored in the soil at the time of irrigation is by measuring the soil moisture.

By measuring the soil moisture the irrigator can be more certain that:

- only the amount of water required by the plant is applied;
- leaching of nutrients is minimised;
- pasture growth and quality is maximised;
- the environmental impacts of irrigation are minimised; and
- costs are reduced.

In order to maximise the efficient use of water taken, the Council strongly urges irrigators to monitor and plan irrigation with the factors outlined above in mind.

Precision irrigation will also assist irrigators in achieving greater economic benefits from water taken.

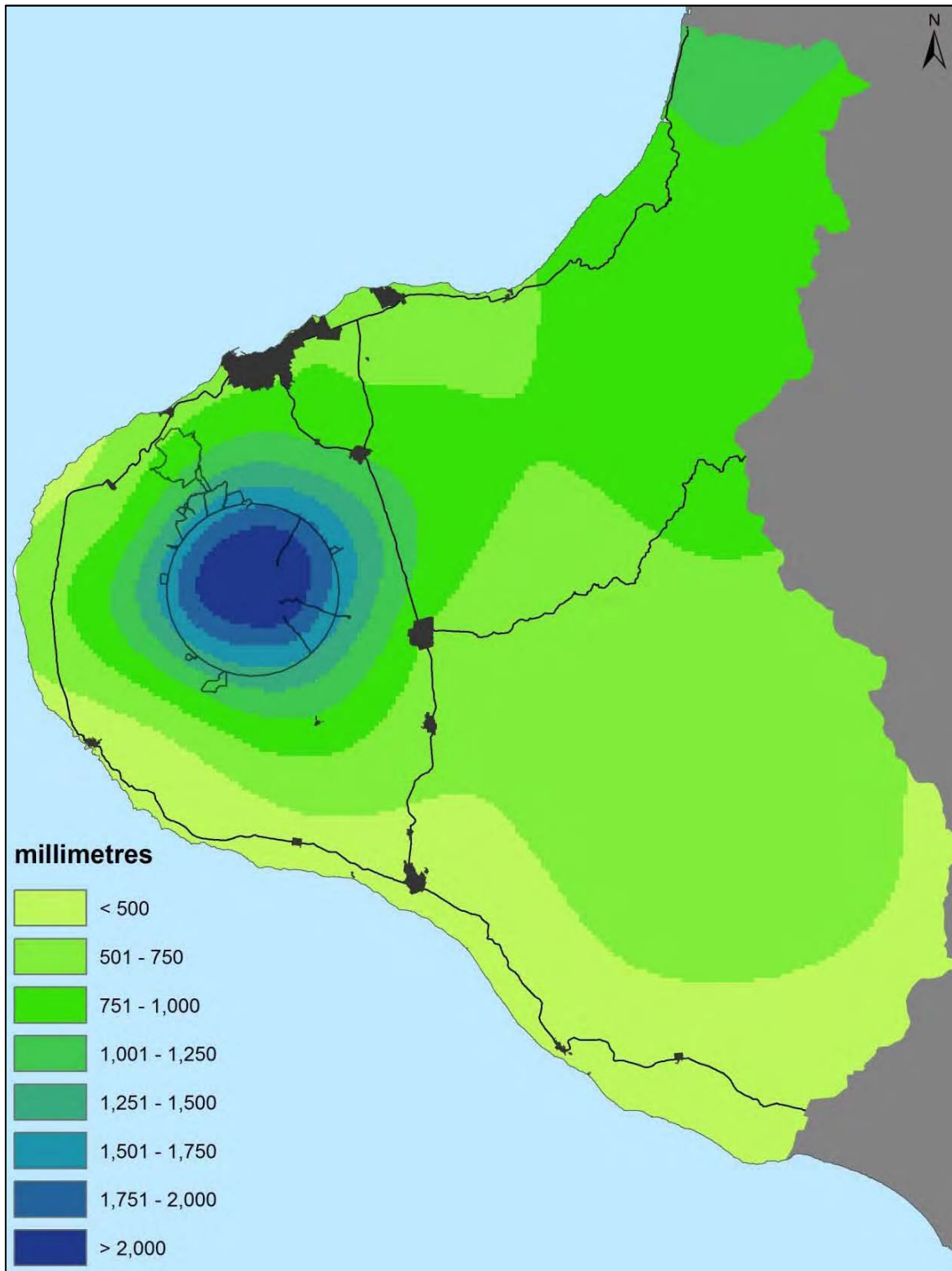


Figure 5 Distribution map of the total rainfall recorded from 1 October 2015 to 31 March 2016

1.2.1 Droughts in Taranaki

Droughts are a normal, recurrent feature of climate. This phenomenon occurs almost everywhere though it features vary from region to region. Defining drought is difficult

as it depends on need, physical differences in regions, and varying disciplinary perspectives. In the most general sense, drought originates from a deficiency of precipitation over an extended period of time, resulting in damage to crops and resultant loss of yields.

Climate change scenarios suggest that Taranaki may experience more severe weather extremes in the form of dry spells as well as heavy rainfall events. The most severe droughts in Taranaki have been in 1969-1970, 1977-1978 and 2007-2008. Changes in drought risk for the Taranaki region indicate a slight increase in the southern coast of the region. Developing climatology assessments of drought for a region provides a greater understanding of its characteristics and the probability of recurrence at various levels of severity. Information of this type is extremely beneficial in the development of response and mitigation strategies and preparedness plans.

1.3 Monitoring programme

1.3.1 Introduction

Section 35 of the RMA sets obligations upon the Council to gather information, monitor and conduct research on the exercise of resource consents within the Taranaki region. The Council is also required to assess the effects arising from the exercising of these consents and report upon them.

The Council may therefore make and record measurements of physical and chemical parameters, take samples for analysis, carry out surveys and inspections, conduct investigations and seek information from consent holders.

Every year the Council undertakes monitoring programmes for all pasture irrigation water permits. The programmes list all of the work that the Council could undertake during the forthcoming monitoring period and the cost of the activities to the consent holder. Because irrigation is climate dependent, the level of monitoring varies from year to year, as do associated costs. Increased monitoring is generally required during drier years. Automated monitoring systems can reduce ongoing monitoring costs for consent holders.

The 2015-2016 monitoring programmes for irrigation water permits comprised a range of various components, including liaison with consent holders, site inspections, water take data collection, residual flow monitoring, water quality analysis, data review and compliance assessments. The specific range of monitoring carried out in relation to each consent is dictated by the water source, weather and flow conditions and system design. It was a busy season for the Council's hydrological monitoring team, as the weather conditions meant the demand for irrigation was high, with irrigation starting as early as the middle of October.

1.3.2 Programme liaison and management

There is generally a significant investment of time and resources by the Council in:

- ongoing liaison with resource consent holders over consent conditions and their interpretation and application;
- in discussion over monitoring requirements;

- preparation for any reviews;
- renewals;
- new consents;
- advice on the Council's environmental management strategies and content of regional plans; and
- consultation on associated matters.

1.3.3 Site inspections

The Council inspected all sites where water was actively being taken for irrigation supply purposes during the 2015-2016 monitoring year. Additionally, the “not-otherwise monitored” activities comprising of golf clubs, horticultural irrigation schemes and stock and dairy shed takes were also subject to a planned inspection visit.

The 2015-2016 pasture irrigation monitoring programmes provided for an annual inspection of each pasture irrigation abstraction site to assess/evaluate compliance with consent conditions. Council staff were able to visit 100% of the active consents during the 2015-2016 monitoring period.

Site inspections are focused on assessing the overall set-up of the intake structures, a visual inspection and assessment of screenings, fences, staff gauges, flowmeters, datalogger devices and planting of riparian vegetation are carried out in line with consent conditions.

Monitoring programmes for surface water abstraction include checking compliance with the residual flow conditions of the consent. Residual flow conditions set minimum environmental flows to be maintained during pumping in the waterways downstream from the abstraction point. Compliance with the residual flow conditions is assessed through hydrological flow gaugings which are carried out during low flow conditions in summer. The results of residual flow monitoring are summarised in Section 2.2 and Table 2.

1.3.4 Measuring and reporting of water takes

A special condition of all irrigation water abstraction is the requirement for the consent holder to measure and record abstraction data. The information collected contributes to the sustainable management of the resource and allows for assessment of compliance with consent conditions. The information is also useful for consent holder's in managing inputs to their operations, identifying potential energy savings, identifying operational issues and making water use efficiency gains².

The Resource Management (Measurement and Reporting of Water Takes) Regulations 2010 (the Regulations) place further legislative requirements on holders of consents for water abstractions of greater than 5 L/s, unless the taking of the water is for non-consumptive purposes.

² Water Programme of Action Ministry for the Environment

The regulations require:

- All water permits allowing the take of 5 L/s or more to collect and report records to a set minimum requirement³;
- Measurement at the point where water is taken from a river, lake or groundwater system (unless otherwise approved by the Council to be in another location);
- Continuous records of daily volumes to be collected using an appropriate flowmeter with the data transferred to the Council on at least an annual basis;
- The flowmeter to meet an accuracy standard, and should be properly installed and calibrated independently every five years; and
- The consent holder to be responsible for recording and transferring the data to the Council.

All abstractions captured under the Regulations were required to be compliant by 10 November 2016. The Council retains the authority to apply more stringent requirements on consent holders over and above those set out in the Regulations through the setting of consent conditions.

The rates and volumes of water abstraction are measured using a flowmeter. If a flowmeter is not installed outside of the manufacturer's specifications, large errors may occur. The error produced by a valve installed immediately upstream of the flowmeter can be as much as 50%. Errors produced by sharp bends upstream of the flowmeter can amount to 20% of the measured flow. Photo 4 shows an example of a good installation of a flowmeter, with appropriate lengths of straight pipe either side of the meter. Photo 5 shows an example of a poor installation, with an elbow in the pipework immediately downstream of the flowmeter.

Poorly installed flowmeters are unlikely to pass the verification test required by a resource consent and/or the Regulations. In these instances the consent holder will be required to undertake works to allow for the successful verification of the flowmeter.

Resource consents issued by the Council generally stipulate the range and frequency of data that a consent holder must record in relation to their water take. Specific requirements have become more stringent as monitoring requirements and expectations have evolved. In addition to the requirements set out in consent conditions, all takes captured under the Regulations are required to meet the data recording and submission requirements set out therein. This includes a minimum requirement to measure and record the daily volume of water taken. Records are required to cover the entire water year (1 July to 30 June) and be provided to the Council by 31 July of each year. The Council retains the authority to apply more stringent requirements on consent holders over and above those set out in the Regulations.

The Council receives a mixture of manual and electronically recorded water use data each year. The majority of consent holders use a datalogger to electronically store all take data being measured by the flowmeter. Data stored on a datalogger is downloaded in the field by Council staff during end of year inspection visits, or earlier if deemed necessary. Some datalogging systems also utilise telemetry to transmit data to the Council in near

³ Refer to the document Resource Management (Measuring and Reporting of Water Takes) Regulations 2010. REF 2010/267.

real-time. Telemetered systems have clear benefits for both consent compliance and water use assessment by consent holders.



Photo 4 Good installation of a flowmeter

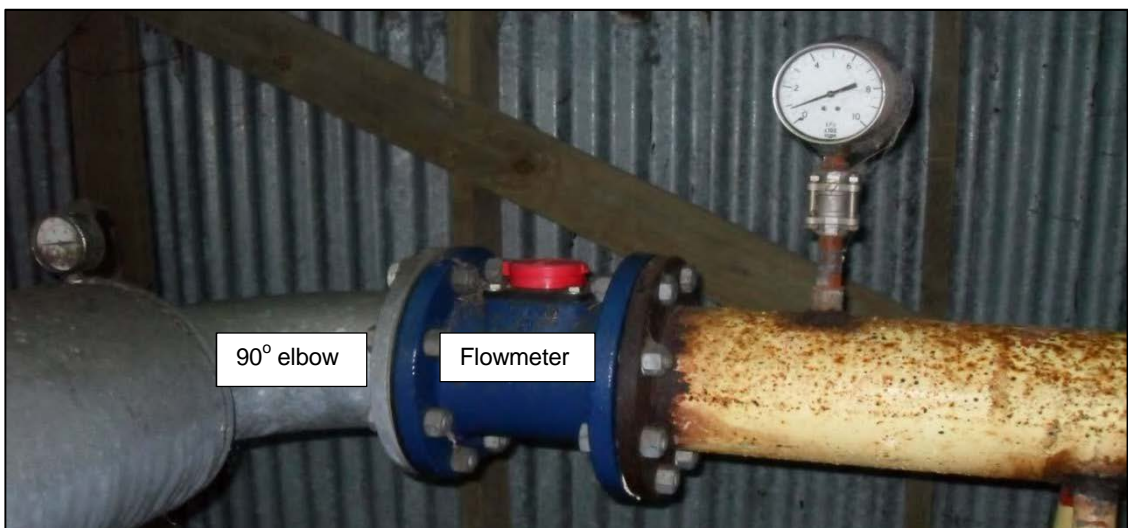


Photo 5 Poor installation of a flowmeter

1.3.5 Residual flow monitoring

Compliance with consent conditions set to safeguard the intrinsic values of Taranaki streams is based on recognising that the taking of water is only allowed when there is water available above the minimum flow set out in the consent. If flows drop below this level, then irrigation is to cease until there is adequate water to allow for irrigation to recommence. To determine compliance the Council undertakes stream flow measurements by indirect and direct methods at control points usually upstream and/or downstream of abstraction points. These methods involve the measurements of velocity and cross-sectional areas which are used together to determine the flow rate.

1.3.6 Data review and compliance assessment

A major component of the monitoring programme is the assessment of water take data for consent compliance purposes. Compliance with abstraction rate and volume is

assessed for all consent holders that exercised their consent. Compliance with abstraction rate and/or volume limits stipulated in the applicable resource consent was determined by assessment of remotely recorded data, or by calculating from records submitted by the consent holder. Data transferred to the Council by telemetered systems is electronically assessed on receipt, with preset automated alarms activated in the event of any consent limit exceedances.

1.3.7 Groundwater quality assessment

Sampling of groundwater for hydrochemical analysis is undertaken from irrigation bores in close proximity to the coast. The purpose of this sampling is to monitor for changes in groundwater composition that may occur as a result of groundwater abstraction in these environments. Most significant is the potential for saline water to be drawn into freshwater aquifers as a result of over abstraction. This process, referred to as saline intrusion, has the potential to severely impact groundwater quality and its usability.

2. Results

2.1 Site inspections

The Council carried out annual compliance monitoring inspections at all sites where irrigation consents were exercised during 2015-2016 irrigation season. This represented 68 separate sites, compared to 71 inspections carried out for the 2014-2015 irrigation season. The reduced number of year on year inspections was a result of less consents being exercised during the 2015-2016 when compared to the preceding 2014-2015 year.

The annual inspections occur between May and June each year, once the irrigation season has ended. Due to the timing of these inspections, most systems have been decommissioned and are undergoing maintenance by this time, so it is sometimes difficult for staff to assess compliance with all consent conditions, particularly those relating to application efficiency and water loss across the operable system.

No non-compliances were identified during inspection visits. There were however two instances of an inspecting officer finding loggers with flat batteries. Data was also unable to be downloaded from one datalogger due to an undiagnosed issue, however the data was retrieved by the logger manufacturer.

2.2 Residual flow compliance

During the period under review, compliance with residual flow conditions for surface water abstraction sites was assessed 73 times in 28 waterways.

Stream gaugings are generally targeted to coincide with the periods of low surface water flows. Of the 73 gaugings carried out, flow volumes were measured below residual flow limits on 20 occasions. In these instances, irrigators taking water from the respective water bodies were required to cease taking until further notice. All irrigators ceased taking water following notification by the Council.

Table 2 lists those residual flow compliance gaugings that were found to be below residual flow limits and the dates that the monitoring occurred. It is important to note that consent holders were not necessarily abstracting at the time these flow gaugings occurred.

Table 2 Stream gaugings below residual flow requirements

Date	Consent	River	Site	Flow recorded (L/s)	Residual flow limit (L/s)
06/01/2016	2138-3	Waingongoro	SH45	1,323	1,490
26/01/2016	10135-1	Warea	Coast	348	357
01/02/2016	5898-2	Waihi 5	Denby Rd	29	44
01/02/2016	5887-1	Inaha	Lower Inaha Rd	186	200
01/02/2016	5791-1	Ouri	SH45	183	200
02/02/2016	5827-2 & 5840-2	Waiokura	Winks Rd	96	125
03/02/2016	5898-2	Waihi 5	Denby Rd	26	44
05/02/2016	5128-2 & 5773-1	Kaihihi	Coast	250	381
05/02/2016	5778-1	Kaihihi	SH45	250	315
05/02/2016	5570-2	Mangatete 2	Saunders Rd	134	168

Date	Consent	River	Site	Flow recorded (L/s)	Residual flow limit (L/s)
12/02/2016	5878-2	Makuri	Toko Rd	143	170
16/02/2016	5797-1	Oeo	5797	72	130
16/02/2016	5570-2	Mangatete 2	Saunders Rd	111	168
16/02/2016	10135-1	Warea	Coast	321	357
16/02/2016	2138-3	Waingongoro	SH45	896	1,490
22/02/2016	5827-2 & 5840-2	Waiokura	Winks Rd	112	125
01/03/2016	5973-2	Otahi 2	Ihaia Rd	83	88
09/03/2016	5791-1	Ouri	SH45	179	200
09/03/2016	5990-1	Waiteika	SH45	21	30
21/03/2016	2138-3	Waingongoro	SH45	1,200	1,490

2.3 Water usage and compliance assessment

During the 2015-2016 monitoring period, 60 of the 76 current consents to take and use water for irrigation purposes were exercised.

All consent holders who exercised their consents during the 2015-2016 period and were required to submit records, either by their conditions of their consent or the Regulations, did so within the required timeframe. Written notifications and telephone calls received advising the non-exercising of consents were also taken as provision of records. There were however some issues with incomplete data being provided, which is discussed further in later sections of this report.

Analysis of the water take data collected shows that irrigation in Taranaki occurred from as early as mid October 2015, with the majority of irrigation occurring between December 2015 and March 2016. There were however 16 consent holders that were irrigating into late April/early May 2016.

The highest water usage for the season was from Roger Dickie Family Trust, abstracting 1,045,020 m³. This consent took an average 130 L/s, with irrigation occurring from mid November to early May. The second highest water user was Spenceview Farms with 900,131 m³. Both takes were operated within the conditions of their respective consents for the duration of the monitoring period. The average usage for all water users for the year was 116,273 m³.

Knowing the actual water usage is an important aspect of any consent monitoring programme, not only to enable the assessment of consent compliance, but also to assist the Council in their overall management of the water resource and determining water allocation limits. The data collected also allows the consent holder to make robust assessments of their water use and resultant benefits.

Appendix III lists each consent holder's 2015-2016 water usage for comparison against their maximum authorised take volume over the monitoring period. The average annual consented take volume across all irrigation consents is 952,124 m³. This is vastly different to the actual average annual usage for the 2015-2016 season of 116,273 m³. This is due to the takes only being exercised for a small proportion of the year, as demand only spikes during dry periods of the year. Also, the majority of the consent holders tend to not irrigate on a continual basis, but generally irrigate at night to minimise evaporation

losses and capitalise on reduced electricity supply costs. Peak irrigation does generally coincide with periods of reduced flow in the region's rivers and stream, which means there is a reduced volume of water available for abstraction.

All data collected is assessed for compliance against respective consent conditions. Following the assessment of the 2015-2016 data, 17 incidents were lodged in relation to irrigation consent non-compliances. Details relating to each non-compliance, and the follow-up actions undertaken by the Council, are presented in Section 2.5.

2.4 Groundwater quality results

During the period under review, groundwater samples were obtained from a total of four coastal sites to assess salinity levels in aquifers being pumped. The results indicate groundwater salinities in the range expected in coastal areas and measured values during the 2015-2016 monitoring period show little deviation from historical mean values at each site.

Further sampling of these bores during forthcoming monitoring periods will allow any changes in groundwater salinity levels to be detected.

The results of the sampling carried out are presented below in Table 3. Historical means for each analyte are presented in brackets for comparison.

Table 3 Groundwater quality results

Consent	Site code	Sample date	Chloride (g/m ³)	Conductivity (mS/m)	pH	Sodium (g/m ³)	Number of samples on record
5950-1	GND1203	16/02/2016	32.4 (33.8)	32.5 (31.8)	8.2 (8.6)	63.6 (60.2)	5
6026-1	GND1233	16/02/2016	67.6 (49.7)	50.7 (46.9)	7.7 (7.8)	43.8 (40.0)	5
9561-1	GND2108	03/03/2016	48.1 (47.5)	39.8 (42.8)	8.0 (8.1)	26.0 (25.6)	2
	GND2109	03/03/2016	35.2 (35.5)	32.7 (35.0)	8.1 (8.1)	25.8 (25.5)	2
9608-1	GND2354	16/02/2016	88.7 (90.3)	68.3 (76.9)	8.9 (8.3)	199 (190.0)	2

2.5 Investigations, interventions, and incidents

The monitoring programme for the year was based on what was considered to be an appropriate level of monitoring, review of data, and liaison with the consent holder. During the year matters may arise which require additional activity by the Council, for example provision of advice and information, or investigation of potential or actual courses of non-compliance or failure to maintain good practices. A pro-active approach that in the first instance avoids issues occurring is favoured.

The Council operates and maintains a register of all complaints or reported and discovered excursions from acceptable limits and practices, including non-compliance with consents, which may damage the environment. The incident register includes events where the Company concerned has itself notified the Council. The register contains details of any investigation and corrective action taken.

Complaints may be alleged to be associated with a particular site. If there is potentially an issue of legal liability, the Council must be able to prove by investigation that the identified company is indeed the source of the incident (or that the allegation cannot be proven).

Compliance with consent conditions was assessed for all irrigation consents exercised 2015-2016 period. Of the 60 consent holders who exercised their irrigation consents during 2015-2016 monitoring year, 17 (28%) had incidents recorded against them, which required further investigation by the Council.

Following investigation of all registered incidents, nine consent holders were found to have a statutory defence, or breaches were sufficiently minor to not warrant further action by the Council, over and above a formal warning regarding their future conduct. Eight incidents resulted in enforcement action being brought by the Council, which included the issuing of seven abatement notices and one infringement notice. This equates to a non-compliance rate across all active irrigation consents of 13% during the 2015-2016 monitoring year.

A summary of each incident identified during the 2015-2016 year, and the Council's response, is presented in Table 4.

Table 4 Consents found to be in breach and the incidents registered

Consent	Consent holder	Reason incident lodged	Outcome
0017-3	Manaia Golf Club	Multiple rate breaches	14 day letter issued. An investigation into the cause of the breaches found that an electrician carrying out maintenance works to the system had caused the data logger to record an elevated rate and volume of abstraction.
0124-5	Kaitake Golf Club Inc	Multiple volume breaches	14 day letter issued. Letter of explanation was received and Council accepted.
0164-2	JR & DM Baker	Multiple rate breaches	14 day letter issued. Letter of explanation was received. An abatement notice was issued requiring consent holder to cease breaching consent conditions. Consent expired 1 June 2016.
1877-2	Te Ngutu Golf Club Inc	Volume breaches	14 day letter issued. Letter of explanation was received and Council accepted. Steps have been taken to ensure no further breaches occur.
3312-3	GH Lance	Continuous volume breaches	14 day letter issued. Letter of explanation was received. An abatement notice was issued requiring consent holder to cease breaching consent conditions. A re-inspection will be undertaken to ensure compliance.
4450-2	Waitara Golf Club Inc	Continuous volume breaches	14 day letter issued. Letter of explanation was received. An abatement notice was issued requiring consent holder to cease breaching consent conditions. A re-inspection will be undertaken to ensure compliance.
5128-2	Coastal Country Farms Limited	Multiple rate and volume breaches	14 day letter issued. Letter of explanation was received and Council accepted.
5773-1	FJ Goodin and Sons Limited	Multiple rate and volume breaches	14 day letter issued. Letter of explanation received and Council accepted.
5778-1	Mara Trust	Volume breaches	The breaches were very minor, so no enforcement action was deemed necessary. However, the consent holder was advised of the breach and directed to ensure abstracted volumes are within consent limits.

Consent	Consent holder	Reason incident lodged	Outcome
5791-1	AL & LA Campbell	Flowmeter not verified	An abatement notice had been issued during the previous season requiring the flowmeter to be verified. This had not been complied with. An infringement notice was issued for not complying with the abatement notice. A letter was sent to the consent holder advising they were not to take water until they have complied with the abatement notice. Further monitoring will be undertaken to ensure compliance.
5829-1	RM & MC Julian Family Trust	Flowmeter not verified	14 day letter issued. No explanation has been received to date. An abatement notice was issued requiring consent holder to cease breaching consent conditions. A re-inspection will be undertaken to ensure compliance.
5879-1	BR & RG Harvey Family Trust	Flowmeter not verified	14 day letter issued. Letter of explanation received. An abatement notice was issued requiring consent holder to cease breaching consent conditions. A re-inspection will be undertaken to ensure compliance.
5898-2	David Pease Family Trust	Multiple rate breaches	14 day letter issued. No explanation has been received to date. An abatement notice was issued requiring consent holder to cease breaching consent conditions. A re-inspection will be undertaken to ensure compliance.
6430-1	Fonic Farms Limited	Incomplete abstraction records	14 day letter issued. Letter of explanation was received. An abatement notice was issued requiring consent holder to cease breaching consent conditions. A re-inspection will be undertaken to ensure compliance.
7372-1	Pukeone Partnership	Multiple rate breaches	The rate breaches were considered very minor (within 5% margin of error). The consent holder was advised to undertake works to the system to ensure the rate of abstraction was below the limit set out by the resource consent.
9561-1	Kereone Farms Limited	Multiple rate breaches in the first half of the season	The consent holder worked with the Council to ensure compliance and there were no further breaches after works were carried out. The consent holder was advised in writing that the system must be maintained to ensure compliance.
9608-1	DR Wilson	Multiple rate breaches	14 day letter issued. Letter of explanation was received and Council accepted. Council staff met with consent holder to discuss the irrigation system to ensure no further breaches occur.

3. Discussion

3.1 Discussion of site performance

Given that this report jointly covers 76 different irrigation water take consents at numerous locations across the region, a discussion of system performance any at each location is impractical. Overall however, the examination of the data supplied to the Council for the 2015-2016 monitoring year revealed that eight of the 60 consent holders who exercised their consents during the 2015-2016 year (13%), breached one or more conditions of their resource consent. Four of these breaches related to exceedances of an abstraction rate and/or volume limit, three for having an unverified flowmeter and one for providing incomplete water take records.

Discussed below are some of the key points and issues arising from the monitoring of irrigation water takes during the 2015-2016. Also discussed are some components of irrigation system monitoring, data collection and transfer that could assist consent holders in improving compliance performance and optimisation of water usage.

The primary means of measuring water abstraction data is the flowmeter. In order to comply with monitoring requirements set out in consent conditions, and the requirements set out in relation to meter accuracy in the Regulations, it is critical that flowmeters are installed as per manufacturer's specifications. The Council recommends the installation of electromagnetic flowmeters, as opposed to mechanical meters. Consent holders must ensure the meter is operable at all times, even when no water is being taken. Consent holders should not tamper with the operation of the meter, or attempt to access internals of the meter, without advising the Council and engaging a suitable qualified technician. Further information regarding preferred meter specification and operation can be obtained by contacting the Council.

To ensure data being collected by a flowmeter is accurate; the accuracy of the meter needs to be confirmed by a verification test. A meter is deemed to be recording accurately (verified) when reading within 5% of a calibrated reference meter. The Regulations required all takes over 5 L/s to be verified by 10 November 2016. Resource consents being issued by the Council generally require flowmeters to be verified before the consent is first exercised. The correct installation of a good quality flowmeter will typically ensure a meter is able to pass a verification test. While the vast majority of meters in Taranaki have been verified, the Council has had to pursue enforcement action in a small number of instances to ensure compliance. Consent holders should be reminded that verification is required every five years, and plans should be put in place well in advance of reverification dates to avoid any compliance issues.

The Council also received several calls from consent holders at the conclusion of the monitoring period advising of operational issues with measurement and recording equipment that had occurred during the year. In some cases, Council staff were only advised of these issues verbally while attending sites for end of year inspections. Often these issues had resulted data not being recorded for a period of time, which in some cases accounted for large portions of the irrigation season. Consent holders are reminded that they need to contact the Council as soon as they discover any operational issues with any monitoring equipment or operational issues that impact their ability comply with their consent (e.g. burst pipework). The majority of irrigation consents stipulate a

requirement to notify the Council of such issues in any case, and failure to do so may result in enforcement action being taken.

As discussed previously in this report, the majority of irrigation consent holders record water take data on dataloggers. Data from these loggers is subsequently downloaded by Council staff at the conclusion of the monitoring year, at which point it is assessed for compliance. During the investigation and follow-up of non-compliances identified at the conclusion of the 2015-2016 monitoring year, a number of consent holders identified as non-compliant were interested in what technologies were available to enable them to view water use data in real-time and which allowed them to be notified of any impending consent exceedances. Such systems are widely available, using telemetry to transmit data electronically via the cell phone network. This data can be accessed by the consent holder and automated alarms can be set up to notify them of any impending breaches of authorised abstraction rate or volume. The Council promotes the installation of telemetry systems as a means of improving consent compliance and allowing water users to better monitor their water usage and improve water use efficiency.

Irrigation consent holders are also urged to investigate the use of soil moisture monitoring equipment to assist in the efficient planning and scheduling of irrigation. By monitoring soil moisture conditions, irrigators can optimise the usage of their irrigation systems to only apply water to pasture when it is required and to cease irrigation when the optimum volume of water has been applied. This has obvious benefits in terms of maximising pasture production but can also save irrigators money by avoiding the application of water when it is not required. Soil moisture monitoring can be undertaken with handheld sensors, or with dedicated in-situ systems. The complexity and cost of each available system vary and consent holders are urged to contact the Council for further information.

3.2 Evaluation of performance

A tabular summary of the all the consent holder's compliance record for the year under review is set out in Table 5.

Table 5 Individual performance for all irrigation consent holders

Consent	Consent holder	Compliance achieved?
0017-3	Manaia Golf Club	Improvement required (environmental)
0124-5	Kaitake Golf Club Inc	Improvement required (environmental)
0132-3	Hawera Golf Club Inc	High
0164-2	JR & DM Baker	Improvement required (environmental)
0184-3	Inglewood Golf Club Inc	High
0189-4	AI & KJ Williams	N/A
0270-2	Westown Golf Club Inc	High
0278-4	NRGE Farms Limited/Oceanview Trust	N/A
0464-3	Oakura Farms Limited	N/A
0647-3	IG Cassie	High
0714-2	GD & HM McCallum	Good
0721-3	MD Aiken Family Trust	N/A

Consent	Consent holder	Compliance achieved?
0880-3	IHC New Zealand Inc (NORTH TARANAKI)	High
1223-3	EO & CP Lander	High
1721-3	Manukorihi Golf Club Inc	High
1877-3	Te Ngutu Golf Club Incorporated	Improvement required (environmental)
1879-3	Wairau Nurseries	N/A
2138-3	Riverside Farms Taranaki Ltd	High
3171-3	Taranaki Greenhouses Limited	High
3312-3	GH Lance	Improvement required (environmental)
3859-2	Living Light 2000 Limited	N/A
4450-2	Waitara Golf Club Inc	Improvement required (environmental)
4494-2	CT & JM McDonald	High
4783-2	Larsen Trusts Partnership	N/A
4993-2	J & EG Sanderson	High
4994-2	J & EG Sanderson	High
5128-2	Coastal Country Farms Limited	Improvement required (environmental)
5568-1	Cornwall Park Farms Limited	Good
5570-2	Kaihihi Trust	High
5571-1	Jimian Limited	N/A
5623-1	WD & SC Morrison	High
5636-1	Waiwira Trust	High
5696-1	Kokako Road Limited	N/A
5709-2	KCCG Sole Trust	Good
5773-1	Goodin FJ & Sons Limited	Improvement required (environmental)
5778-1	Mara Trust	Good
5781-2	Waikaikai Farms Limited	High
5791-1	AL & LA Campbell	Improvement required (environmental)
5797-1	Pihama Farms Limited	High
5807-1	Dickie Roger Family Trust	High
5827-2	Walker & McLean Partnership	High
5829-1	RM & MC Julian Family Trust	Improvement required (environmental)
5840-2	Gibbs G Trust	High
5863-2	Geary AR Trust (A R Geary)	High
5876-1	GA & RJ Dorn	High
5878-1	Woolleston Family Trust Partnership	High
5879-1	BR & RG Harvey Family Trust	Improvement required (environmental)
5887-1	A & EN Barkla	High
5896-1	Kohi Investments Limited	Improvement required (environmental)
5898-2	David Pease Family Trust	Improvement required (environmental)
5950-1	WD & SC Morrison	High
5973-1	Crosbig Trusts Partnership	Good

Consent	Consent holder	Compliance achieved?
6026-1	JR & DM Baker	Good
6159-1	Pinehill Land Company Limited	N/A
6193-1	RA & SM Geary Family Trust Partnership	N/A
6292-1	New Plymouth Golf Club Inc	Good
6429-1	Leatherleaf Limited	High
6430-1	Fonic Farms Limited	Improvement required (environmental)
6628-1	Hamblyn Family Trusts	High
7270-1	Ian Mantey Family Trust & Sally Mantey Family Trust	N/A
7346-1	Spenceview Farms	High
7372-1	Pukeone Partnership	Good
7527-1	Pukeone Partnership	High
7528-1	Kereone Farms Limited	High
7626-1	NW & DM King	High
7768-1	Carter AJ Limited	High
7781-1	D Krumm	High
7866-1	Stratford Golf Club Inc	N/A
7895-1	Ohawe Farm	High
7981-1	Taranaki Community Rugby Trust	N/A
9561-1	Kereone Farms Limited	Good
9577-1	MJ Washer Trusts Partnership	High
9597-1	Nilock & Camole Trusts	High
9608-1	DR Wilson	Improvement required (environmental)
9936-1	GSJ Trust	N/A
10135-1	Luttrell Trust Partnership	N/A

During the 2015-2016 year, 47% of exercised irrigation consents in Taranaki achieved a high environmental performance and compliance rating as defined in Section 1.1.5. A further 12% were assigned a good rating, with a further 20% are required to show improvement.

Ninety eight percent of consent holders who exercised their consents during the 2015-2016 year achieved a high level rating for their administrative performance and compliance.

3.3 Recommendations from the 2014-2015 Annual Report

In the 2014-2015 Annual Report, it was recommended:

1. THAT monitoring and reporting of consented irrigation activities for the 2015-2016 year continue at the same level as in the 2014-2015 period.

Recommendation 1 was implemented during the period under review.

2. THAT Council continues to liaise with consent holders who have dataloggers that are failing, so improvements in compliance at all time with consent conditions are achieved.
3. THAT the Council encourages consent holders that do not supply good quality records to install a datalogger and transfer data electronically to the Council database via telemetry.
4. THAT the Council requires all consent holders that take above 5 L/s to comply with the Measurement and Reporting of Water Takes Regulations 2010. N.B 10 November 2016 is the deadline for compliance.

The Council continues to work with consent holders regarding recommendations 2, 3 and 4, and to improve compliance with consent conditions and all relevant regulations.

3.4 Alterations to monitoring programmes for 2016-2017

In designing and implementing the monitoring programmes for air/water discharges in the region, the Council has taken into account:

- the extent of information made available by previous authorities;
- its relevance under the RMA;
- its obligations to monitor emissions/ discharges and effects under the RMA; and
- to report to the regional community.

The Council also takes into account the scope of assessments required at the time of renewal of permits, and the need to maintain a sound understanding of industrial processes within Taranaki emitting to the atmosphere/ discharging to the environment.

It is proposed that monitoring of irrigation consents continues at the same level as during the 2015-2016 year. It is proposed however that mid-season monitoring inspections and data downloads be undertaken to assess water take compliance with consent conditions for all consent holders that breached their authorised abstraction rate and/or volume limits in the 2015-2016 season. This will allow early intervention by the Council if required.

4. Recommendations

1. THAT the monitoring and the downloading of abstraction data occurs mid season for those that had water take breaches during the 2015-2016 season.
2. THAT the Council encourages consent holders that do not supply good quality records to install a datalogger and transfer data electronically to the Council database via telemetry.
3. THAT the Council continues to actively enforce the implementation of the Resource Management (Measurement and Reporting of Water Takes) Regulations 2010.

Glossary of common terms and abbreviations

The following abbreviations and terms may be used within this report:

Conductivity	Conductivity, an indication of the level of dissolved salts in a sample, usually measured at 20°C and expressed in mS/m.
Cumec	A volumetric measure of flow- 1 cubic metre per second (1 m ³ s ⁻¹).
g/m ³	Grams per cubic metre, and equivalent to milligrams per litre (mg/L). In water, this is also equivalent to parts per million (ppm), but the same does not apply to gaseous mixtures.
Incident	An event that is alleged or is found to have occurred that may have actual or potential environmental consequences or may involve non-compliance with a consent or rule in a regional plan. Registration of an incident by the Council does not automatically mean such an outcome had actually occurred.
Intervention	Action/s taken by Council to instruct or direct actions be taken to avoid or reduce the likelihood of an incident occurring.
Investigation	Action taken by Council to establish what were the circumstances/events surrounding an incident including any allegations of an incident.
Incident Register	The Incident Register contains a list of events recorded by the Council on the basis that they may have the potential or actual environmental consequences that may represent a breach of a consent or provision in a Regional Plan.
L/s	Litres per second.
m ²	Square Metres.
mS/m	Millisiemens per metre.
pH	A numerical system for measuring acidity in solutions, with 7 as neutral. Numbers lower than 7 are increasingly acidic and higher than 7 are increasingly alkaline. The scale is logarithmic i.e. a change of 1 represents a ten-fold change in strength. For example, a pH of 4 is ten times more acidic than a pH of 5.
Resource consent	Refer Section 87 of the RMA. Resource consents include land use consents (refer Sections 9 and 13 of the RMA), coastal permits (Sections 12, 14 and 15), water permits (Section 14) and discharge permits (Section 15).
RMA	<i>Resource Management Act 1991</i> and including all subsequent amendments.
Temp	Temperature, measured in °C (degrees Celsius).

Bibliography and references

- Cameron, S.G, & White P.A., 2004: Determination of key indicators to assess groundwater quality in New Zealand aquifers. Unpublished Institute Geological Nuclear Sciences client report 2004/111, 117pp.
- Horizons Regional Council. Assessment of the Seawater Intrusion Hazard in the Manawatu Coastal Aquifers and Monitoring Action Plan. *Phreatos Limited, May 2005.*
- Rout R, 2003: Optimisation of Farm Irrigation. Report 4579/1, prepared for Taranaki Regional Council by Lincoln Environmental, January 2003. 55pp.
- MAF 1997: Best Management Guidelines for Sustainable Irrigated Agriculture. MAF Policy Technical Paper N° 00/05, ISBN 0-478-2050-1. 47 pp.
- Ministry for the Environment 2010: Resource Management (Measurement and Reporting of Water Takes) Regulations 2010. 8 pp.
- TRC 1998: State of Environment Monitoring report 1994-97 groundwater levels, quality and nitrate monitoring. Unpublished Technical Report 97-86 by Taranaki Regional Council, January 1998, 27 pp.
- TRC 2003: A preliminary evaluation of surface water availability and demand for pasture irrigation purposes in Taranaki. Unpublished report by Taranaki Regional Council, July 2003, 14 pp.
- TRC 2005: State of Environment Monitoring 2001-2002 - Nitrates in shallow groundwater. Unpublished Technical Report 2003-22 by Taranaki Regional Council, March 2005, 19 pp.
- The New Zealand Irrigation Manual. A Practical guide to profitable and sustainable irrigation. Malvern Landcare Group. 2001.
- Taranaki Regional Council 2003: Pasture irrigation monitoring Annual Report 2002-2003. Technical Report 2003-75.
- Taranaki Regional Council 2004: Pasture irrigation monitoring Annual Report 2003-2004. Technical Report 2004-63.
- Taranaki Regional Council 2005: Pasture irrigation monitoring Annual Report 2004-2005. Technical Report 2005-70.
- Taranaki Regional Council 2006: Pasture irrigation monitoring Annual Report 2005-2006. Technical Report 2006-04.
- Taranaki Regional Council 2007: Pasture Irrigation Compliance Monitoring Annual Report 2006-2007. Technical Report 2007-55.
- Taranaki Regional Council 2009: Irrigation Water Compliance Monitoring Annual Report 2007-2008. Technical Report 2008-84.

Taranaki Regional Council 2010: Irrigation Water Compliance Monitoring Annual Report 2008-2009. Technical Report 2009-100.

Taranaki Regional Council 2010: Irrigation Water Compliance Monitoring Annual Report 2009-2010. Technical Report 2010-49.

Taranaki Regional Council 2011: Irrigation Water Compliance Monitoring Annual Report 2010-2011. Technical Report 2011-53.

Taranaki Regional Council 2012: Irrigation Water Compliance Monitoring Annual Report 2011-2012. Technical Report 2012-70.

Taranaki Regional Council 2013: Irrigation Water Compliance Monitoring Annual Report 2012-2013. Technical Report 2013-100.

Taranaki Regional Council 2014: Irrigation Water Compliance Monitoring Annual Report 2013-2014 . Technical Report 2014-67.

Taranaki Regional Council 2015: Irrigation Water Compliance Monitoring Annual Report 2014-2015 . Technical Report 2015-85.

Appendix I

Example surface water abstraction permit for irrigation

Water Permit
Pursuant to the Resource Management Act 1991
a resource consent is hereby granted by the
Taranaki Regional Council

Name of
Consent Holder: Luttrell Trust Partnership
(Trustees: Sean Prionsese & Marianne Flora Luttrell)
78A Nopera Road
RD 32
Opunake 4682

Decision Date: 25 August 2015

Commencement Date: 15 September 2015

Conditions of Consent

Consent Granted: To take and use water from the Warea River for pasture irrigation purposes

Expiry Date: 01 June 2031

Review Date(s): June Annually

Site Location: 288 Bayly Road, Warea

Legal Description: Lot 19 DP 366494 Sec 67 Blk VII Cape SD (site of take & use)

Grid Reference (NZTM) 1667764E-5656861N

Catchment: Warea

*For General, Standard and Special conditions
pertaining to this consent please see reverse side of this document*

General condition

- a. The consent holder shall pay to the Taranaki Regional Council all the administration, monitoring and supervision costs of this consent, fixed in accordance with section 36 of the Resource Management Act 1991.

Special conditions

1. The rate of taking shall not exceed 64.8 litres per second.
2. At least 5 working days before this consent is first exercised the consent holder shall notify the Taranaki Regional Council. Notification shall include the consent number and the date that water will be first taken, and shall be emailed to worknotification@trc.govt.nz.
3. Before exercising this consent the consent holder shall install, and thereafter maintain a water meter and a datalogger at the site of taking (or a nearby site in accordance with Regulation 10 of the *Resource Management (Measurement and Reporting of Water Takes) Regulations 2010*. The water meter and datalogger shall be tamper-proof and shall measure and record the rate and volume of water taken to an accuracy of $\pm 5\%$. Records of the date, the time and the rate and volume of water taken at intervals not exceeding 15 minutes, shall be made available to the Chief Executive, Taranaki Regional Council at all reasonable times.

Note: Water meters and dataloggers must be installed, and regularly maintained, in accordance with manufacturer's specifications in order to ensure that they meet the required accuracy. Even with proper maintenance water meters and dataloggers have a limited lifespan.

4. The consent holder shall provide the Chief Executive, Taranaki Regional Council with a document from a suitably qualified person certifying that water measuring and recording equipment required by the conditions of this consent ('the equipment'):
 - (a) has been installed and/or maintained in accordance with the manufacturer's specifications; and/or
 - (b) has been tested and shown to be operating to an accuracy of $\pm 5\%$.

The documentation shall be provided:

- (i) within 30 days of the installation of a water meter or datalogger;
 - (ii) at other times when reasonable notice is given and the Chief Executive, Taranaki Regional Council has reasonable evidence that the equipment may not be functioning as required by this consent; and
 - (iii) no less frequently than once every five years.
5. If any measuring or recording equipment breaks down, or for any reason is not operational, the consent holder shall advise the Chief Executive, Taranaki Regional Council immediately. Any repairs or maintenance to this equipment must be undertaken by a suitably qualified person and a maintenance report given to Taranaki Regional Council within 30 days of any such work occurring.

Consent 10135-1.0

6. Any water meter or datalogger shall be accessible to Taranaki Regional Council officers' at all reasonable times for inspection and/or data retrieval. In addition the data logger shall be designed and installed so that Taranaki Regional Council officers can readily verify that it is accurately recording the required information.
7. The records of water taken shall:
 - (a) be in a format that, in the opinion of the Chief Executive, Taranaki Regional Council, is suitable for auditing; and
 - (b) specifically record the water taken as 'zero' when no water is taken;
8. The taking of water authorised by this consent shall be managed to ensure that the flow in the Warea River immediately downstream of the intake point is not less than 357 litres per second. No taking shall occur when the flow is less than 357 litres per second.
9. A staff gauge shall be installed and a low flow rating curve established and maintained that determines the flow in the Warea River immediately downstream of the take site.
10. From 1 December 2015, for flows less than 1500 litres per second, the consent holder shall determine the flow in the Warea River immediately downstream of the take site at intervals not exceeding 15 minutes to an accuracy of $\pm 10\%$.

Note: The installations required by conditions 9 & 10 will be installed by the Taranaki Regional Council and costs charged to the consent holder.

11. Before 1 September 2017 the consent holder shall complete, and subsequently maintain, all of the riparian fencing and planting indicated in the Riparian Management Plan for the property.
12. At all times the consent holder shall take all practicable steps to take and use water efficiently and generally prevent or minimise any adverse effects on the environment including as minimum, by ensuring that:
 - (a) the minimum amount of water necessary for the purpose is taken;
 - (b) as far as practicable, soil water does not exceed field capacity;
 - (c) there is no surface ponding or runoff; and
 - (d) equipment does not leak.
13. Water shall be taken and used in accordance with an *Irrigation Management Plan* ('IMP') prepared by the consent holder and approved by the Chief Executive, Taranaki Regional Council, acting in a certification capacity. The IMP shall detail methods and techniques that will be used to ensure compliance with condition 12 including, as a minimum, details of:
 - (a) The specific area(s) to be irrigated and the method of irrigation;
 - (b) Crop water requirements, evapotranspiration and available water holding capacity of the soil(s) over the irrigated area;
 - (c) How irrigation will be scheduled to maximise the benefits of rainfall and minimise subsurface drainage;
 - (d) How available soil water will be determined;
 - (e) How water is to be applied as uniformly as practicable over the irrigated area, and the uniformity of application demonstrated;

Consent 10135-1.0

- (f) A leak detection programme; and
 - (g) Information to be provided to the Taranaki Regional Council to enable compliance to be checked.
14. The Irrigation Management Plan ('IMP') prepared and submitted to the Chief Executive, Taranaki Regional Council in accordance condition 13 shall also be provided to Fish and Game New Zealand at the same time. Any comments made by Fish and Game New Zealand within 15 working days of receiving a plan will be taken into account by the Chief Executive, Taranaki Regional Council when determining if the plan meets the requirements of this consent.
15. The consent holder shall ensure that the intake is screened to avoid fish (in all stages of their life-cycle) entering the intake or being trapped against the screen.
16. This consent shall lapse on 30 September 2020, unless the consent is given effect to before the end of that period or the Taranaki Regional Council fixes a longer period pursuant to section 125(1)(b) of the Resource Management Act 1991.
17. In accordance with section 128 and section 129 of the Resource Management Act 1991, the Taranaki Regional Council may serve notice of its intention to review, amend, delete or add to the conditions of this resource consent by giving notice of review annually during June for the purposes of:
- (a) ensuring that the conditions are adequate to deal with any adverse effects on the environment arising from the exercise of this resource consent, which were either not foreseen at the time the application was considered or which it was not appropriate to deal with at the time; and/or
 - (b) to require any data collected in accordance with the conditions of this consent to be transmitted directly to the Taranaki Regional Council's computer system, in a format suitable for providing a 'real time' record over the internet; and/or
 - (c) increasing the minimum flow specified in condition 8 to account for additional hydrological information that becomes available, recognising that the specified flow is intended to be a reasonable estimate of mean annual low flow.

Signed at Stratford on 25 August 2015

For and on behalf of
Taranaki Regional Council

A D McLay
Director - Resource Management

Appendix II

Active irrigation consents in Taranaki July 2015 to June 2016

Irrigation Water Takes

SURFACE WATER TAKES

Consent	Consent Holder	Usage	Irrigation system*
0017-3	Manaia Golf Club	Recreational	K – line
0124-5	Kaitake Golf Club Inc	Recreational	K – line
0132-3	Hawera Golf Club Inc	Recreational	K – line
0164-2	JR & DM Baker	Pasture Irrigation	K – line
0184-3	Inglewood Golf Club Inc	Recreational	K – line
0189-4	AI & KJ Williams	Pasture Irrigation	Travelling irrigator
0270-3	Westown Golf Club Inc	Recreational	K – line
0278-4	NRGE Farms Limited/Oceanview Trust	Pasture Irrigation	K – line and flood irrigation
0464-3	Oakura Farms Limited	Horticultural	n/a
0647-3	IG Cassie	Horticultural	K – line
0880-3	IHC New Zealand Inc (NORTH TARANAKI)	Horticultural	K – line
1223-3	EO & CP Lander	Horticultural	K – line
1721-3	Manukorihi Golf Club Inc	Recreational	K – line
1877-3	Te Ngutu Golf Club Incorporated	Recreational	K – line
1879-3	Wairau Nurseries	Horticultural	n/a
2138-3	Riverside Farms Taranaki Ltd	Pasture Irrigation	K - line
4450-2	Waitara Golf Club Inc	Recreational	K - line
4494-2	CT & JM McDonald	Pasture Irrigation	K - line
4783-2	Larsen Trusts Partnership	Pasture Irrigation	K – line and travelling irrigator
4993-2	J & EG Sanderson	Pasture Irrigation	K - line
4994-2	J & EG Sanderson	Pasture Irrigation	K - line
5128-2	Coastal Country Farms Limited	Pasture Irrigation	K – line and travelling irrigator
5568-1	Cornwall Park Farms Limited	Pasture Irrigation	Travelling irrigator
5570-2	Kaihihi Trust	Pasture Irrigation	K - line
5571-1	Jimian Limited	Pasture Irrigation	K - line
5623-1	WD & SC Morrison	Pasture Irrigation	Centre pivot and K - line
5636-1	Waiwira Trust	Pasture Irrigation	Centre pivot and K - line
5696-1	Kokako Road Limited	Pasture Irrigation	K – line
5709-2	KCCG Sole Trust	Pasture Irrigation	K – line
5773-1	Goodin FJ & Sons Limited	Pasture Irrigation	K – line
5778-1	Mara Trust	Pasture Irrigation	K – line
5781-2	Waikaikai Farms Limited	Pasture Irrigation	K – line
5791-1	AL & LA Campbell	Pasture Irrigation	K – line

Consent	Consent Holder	Usage	Irrigation system*
5797-1	Pihama Farms Limited	Pasture Irrigation	K – line
5807-1	Dickie Roger Family Trust	Pasture Irrigation	Centre pivot and K – line
5827-2	Walker & McLean Partnership	Pasture Irrigation	Centre pivot
5829-1	Julian RM & MC Family Trust	Pasture Irrigation	K – line and travelling irrigator
5840-2	Gibbs G Trust	Pasture Irrigation	Centre pivot
5863-2	Geary AR Trust (A R Geary)	Pasture Irrigation	Centre pivot and K – line
5876-1	GA & RJ Dorn	Pasture Irrigation	K - line
5878-1	Woollaston Family Trust Partnership	Pasture Irrigation	Travelling irrigator
5887-1	A & EN Barkla	Pasture Irrigation	K – line
5896-1	Kohi Investments Limited	Pasture Irrigation	K – line
5898-2	David Pease Family Trust	Pasture Irrigation	K – line
5973-2	Crosbig Trusts Partnership	Pasture Irrigation	K – line
6159-1	Pinehill Land Company Limited	Pasture Irrigation	K – line & travelling irrigator
6292-1	New Plymouth Golf Club Inc	Recreational	K – line
6429-1	Leatherleaf Limited	Pasture Irrigation	Centre pivot
6430-1	Fonic Farms Limited	Pasture Irrigation	Centre pivot and K – line
6628-1	Hamblyn Family Trusts	Pasture Irrigation	K – line
7270-1	Ian Mantey Family Trust & Sally Mantey Family Trust	Pasture Irrigation	Travelling irrigator
7346-1	Spenceview Farms	Pasture Irrigation	Centre pivot
7372-1	Pukeone Partnership	Pasture Irrigation	Centre pivot
7527-1	Pukeone Partnership	Pasture Irrigation	Centre pivot
7528-1	Kereone Farms Limited	Pasture Irrigation	Centre pivot
7626-1	NW & DM King	Pasture Irrigation	K - line
7768-1	Carter AJ Limited	Pasture Irrigation	Travelling irrigator
7781-1	D Krumm	Pasture Irrigation	Travelling irrigator
7895-1	Ohawe Farm Limited	Pasture Irrigation	K – line
7981-1	Taranaki Community Rugby Trust	Pasture Irrigation	n/a
9577-1	MJ Washer Trusts Partnership	Pasture Irrigation	K – line and travelling irrigator
9597-1	Nilock & Camole	Pasture Irrigation	Centre pivot
9936-1	GSJ Trust	Pasture Irrigation	n/a
10135-1	Luttrell Trust Partnership	Pasture Irrigation	n/a

GROUNDWATER TAKES

Consent	Consent Holder	Usage	Irrigation system*
0714-2	GD & HM McCallum	Pasture Irrigation	K – line and travelling irrigator
0721-3	MD Aiken Family Trust	Horticultural	n/a
3171-3	Taranaki Greenhouses Limited	Horticultural	K – line
3312-3	GH Lance	Horticultural	K – line
3859-2	Living Light 2000 Limited	Horticultural	n/a
5879-1	BR & RG Harvey Family Trust	Pasture Irrigation	n/a
5950-1	WD & SC Morrison	Pasture Irrigation	Centre pivot and K - line
6026-1	JR & DM Baker	Pasture Irrigation	K – line
6193-1	RA & SM Geary Trusts Partnership	Pasture Irrigation	n/a
7866-1	Stratford Golf Club Inc	Recreational	n/a
9561-1	Kereone Farms Limited	Pasture Irrigation	Centre pivot
9608-1	D Wilson	Pasture Irrigation	Centre pivot

*n/a - consent holder does not have any system in place.

Appendix III

Water take consent usage for 2015-2016

Water take consent usage for 2015-2016

Consent	Consent holder	Consented allowable annual usage (m ³ /annum)	Actual water usage from 1 July 2015 to 30 June 2016 (m ³ /annum)
0017-3	Manaia Golf Club	36,500	8,683
0124-5	Kaitake Golf Club Inc	47,450	10,574
0132-3	Hawera Golf Club Inc	91,250	n/a*
0164-2	JR & DM Baker	255,500	39,058
0184-3	Inglewood Golf Club Inc	21,900	2,865
0189-4	AI & KJ Williams	365,000	0
0270-3	Westown Golf Club Inc	131,400	3,356.3
0278-4	NRGE Farms Limited/Oceanview Trust	4,320,432	0
0464-3	Oakura Farms Limited	36,500	0
0647-3	IG Cassie	30,660	1,469
0714-2	GD & HM McCallum	182,500	41,315.9
0721-3	MD Aiken Family Trust	30,660	0
0880-3	IHC New Zealand Inc (NORTH TARANAKI)	32,120	5,647
1223-3	EO & CP Lander	108,405	7,740
1721-3	Manukorihi Golf Club Inc	69,350	17,039
1877-3	Te Ngutu Golf Club Incorporated	73,000	9,551
1879-3	Wairau Nurseries	33,215	0
2138-3	Riverside Farms Taranaki Ltd	756,864	28,900
3171-3	Taranaki Greenhouses Limited	22,630	5,058
3312-3	GH Lance	21,900	21,090
3859-2	Living Light 2000 Limited	27,594	n/a*
4450-2	Waitara Golf Club Inc	18,250	5,781
4494-2	CT & JM McDonald	788,400	10,681
4783-2	Larsen Trusts Partnership	1,169,825	0
4993-2	J & EG Sanderson	1,022,000	69,780
4994-2	J & EG Sanderson	1,186,250	172,768
5128-2	Coastal Country Farms Limited	851,545	59,899
5568-1	Cornwall Park Farms Limited	287,437.5	22,123
5570-2	Kaihihi Trust	547,500	29,686
5571-1	Jimian Limited	1,261,440	0
5623-1	WD & SC Morrison	3,547,800	566,072
5636-1	Waiwira Trust	2,584,930	806,777
5696-1	Kokako Road Limited	1,182,600	0

Consent	Consent holder	Consented allowable annual usage (m³/annum)	Actual water usage from 1 July 2015 to 30 June 2016 (m³/annum)
5709-2	KCCG Sole Trust	912,500	0
5773-1	Goodin FJ & Sons Limited	630,720	110,999
5778-1	Mara Trust	630,720	66,671
5781-2	Waikaikai Farms Limited	2,269,205	224,673
5791-1	AL & LA Campbell	958,125	157,220
5797-1	Pihama Farms Limited	1,314,000	108,787
5807-1	Dickie Roger Family Trust	6,679,500	1,045,020
5827-2	Walker & McLean Partnership	821,250	102,689
5829-1	Julian RM & MC Family Trust	1,533,000	233,784
5840-2	Gibbs G Trust	821,250	88,083
5863-2	Geary AR Trust (A R Geary)	1,144,640	358,926
5876-1	GA & RJ Dorn	1,350,500	130,920
5878-1	Woolleston Family Trust Partnership	474,500	2,297
5879-1	BR & RG Harvey Family Trust	630,720	7,923
5887-1	A & EN Barkla	547,500	51,503
5896-1	Kohi Investments Limited	1,460,000	198,289
5898-2	David Pease Family Trust	946,080	166,286
5950-1	WD & SC Morrison	313,900	89,055
5973-2	Crosbig Trusts Partnership	584,000	13,730
6026-1	JR & DM Baker	189,070	30,587
6159-1	Pinehill Land Company Limited	237,250	0
6193-1	RA & SM Geary Trusts Partnership	262,800	0
6292-1	New Plymouth Golf Club Inc	292,000	48,820
6429-1	Leatherleaf Limited	912,500	138,754
6430-1	Fonic Farms Limited	1,741,050	249,604
6628-1	Hamblyn Family Trusts	765,770	112,100
7270-1	Ian Mantey Family Trust & Sally Mantey Family Trust	378,140	0
7346-1	Spenceview Farms	3,815,856	900,131
7372-1	Pukeone Partnership	1,261,440	433,430
7527-1	Pukeone Partnership	5,545,080	346,713
7528-1	Kereone Farms Limited	3,416,400	478,447
7626-1	NW & DM King	725,328	39,373
7768-1	Carter AJ Limited	126,144	24,192
7781-1	D Krumm	105,120	n/a
7866-1	Stratford Golf Club Inc	25,550	0

Consent	Consent holder	Consented allowable annual usage (m³/annum)	Actual water usage from 1 July 2015 to 30 June 2016 (m³/annum)
7895-1	Ohawe Farm Limited	1,259,250	93,885
7981-1	Taranaki Community Rugby Trust	838,857.6	0
9561-1	Kereone Farms Limited	682,550	50,105
9577-1	MJ Washer Trusts Partnership	127,750	38,698
9597-1	Nilock & Camole	647,875	50,177
9608-1	D Wilson	946,080	275,171
9936-1	GSJ Trust	385,002	0
10135-1	Luttrell Trust Partnership	2,043,532.8	0

* Consent was exercised but not required to submit records by the consent or the Regulations

Appendix IV

Report on consented water permits for farm and general water supply purposes

Report on water permits for farm and general water supply

Introduction

This report is for water takes for general farm and water supply purposes that have been granted by the Council [water takes in excess of the permitted 1.5 litres per second or 50 cubic metres per day entitlement per property according to the Regional Fresh Water Plan for Taranaki, Rule 15], but have not been reported on previously as only water takes for irrigation had. This report discusses the consents active to 30 June 2016 and any compliance issues related to them.

These water takes are different to that for water irrigation, as these are used for general farm use and water supply and are used throughout the year unlike irrigation consents that are used for a small portion of the year. These consents generally have different consent conditions attached to them, to that of irrigation water, as the takes are generally of a minor nature and generally fall outside the Measurement and Reporting of Water Takes Regulations 2010.

Current water take consents

At 30 June 2016, there were a total of 28 current water take consents for general farm and water supply purposes. Of these seven were from surface water and 21 were from groundwater sources (Table 1).

Table 1 Total consents granted for dairy farm and water supply purposes to 30 June 2016

Consent	Consent holder	Source
0095-2	Ashbrook Farms Limited	Surface Water
0865-3	Kathdan Trust Limited	Surface Water
1190-3	Pungarehu Farmers Group Water Scheme	Surface Water
5413-2	MJ Fahy	Groundwater
5990-1	ID & JA Armstrong	Surface Water
6133-1	DJ & ME McKenzie	Groundwater
6372-1	Naplin Trust	Groundwater
6380-1	Caiseal Trust Partnership	Groundwater
6903-1	Awatea Hawkes Bay Trust	Groundwater
7132-1	Aorere Farms Partnership	Groundwater
7272-1	Belmont Dairies Limited	Groundwater
7304-1	Gwerder Brothers	Groundwater
7497-1	Te Rua O te Moko 2B Ahuwhenua Trust	Surface Water
7540-1	AJ & DI Dravitzki Trusts Partnership	Groundwater
7608-1	MD Aiken Family Trust	Groundwater
7711-1	Pariroa Marae (The Trustees)	Groundwater
7783-1	Norwood Farm Partnership	Groundwater
7969-1	AB Middleton	Surface Water
9747-1	DP & JH Roper Family Trust Partnership	Groundwater
9886-1	Sona Chosta Limited	Surface Water
9900-1	Kaipu Holdings Limited	Groundwater
9910-1	PKW Farms LP	Groundwater
9947-1	Ngatoro Poultry Limited	Groundwater
10029-1	Hernly Farms Limited	Groundwater
10112-1	Construction Mechanics (1993) Limited	Groundwater
10113-1	PKW Farms LP	Groundwater
10120-1	SC & MJ O'Neill Family Trust	Groundwater
10199-1	ClearAz Taranaki Spring Water	Groundwater

Results and discussion

During the year under review, the Council inspected all water take consents that have a compliance monitoring programme. This meant that some consents were not monitored due to the small nature of the takes as it was deemed unnecessary, and/or there were no enforceable consent conditions to monitor on the systems.

Of the consents that were inspected, they were checked to ensure that they were compliant with their resource consent conditions, which may include presence of a flowmeter, flowmeter tamperproof, adequately screened intakes, bores labelled and cased, pump sheds fenced off, water bodies fenced off, riparian margins planted.

If the consents were required to keep records, the records were either downloaded at the time of the annual inspection if a datalogger was present or the records were to be sent to the Council by 31 July. Table 2 lists the consents annual allowable usage and actual water usage for 2015-2016 season.

Table 2 Consents allowable annual water take and 2015-2016 actual annual usage

Consent	Consent holder	Consented allowable annual usage (m ³ /annum)	Actual water usage from 1 July 2015 to 30 June 2016 (m ³ /annum)
0095-2	Ashbrook Farms Limited	31,356	n/a – no requirement
0865-3	Kathdan Trust Limited	394,200	71,010
1190-3	Pungarehu Farmers Group Water Scheme	109,500	57,392
5413-2	MJ Fahy	71,540	1,274
5990-1	ID & JA Armstrong	29,200	13,940
6133-1	DJ & ME McKenzie	1,825	n/a – no requirement
6372-1	Naplin Trust	18,250	n/a – no requirement
6380-1	Caiseal Trust Partnership	36,500	18,787
6903-1	Awatea Hawkes Bay Trust	91,250	12,193
7132-1	Aoreere Farms Partnership	65,700	25,367
7272-1	Belmont Dairies Limited	94,535	21,223
7304-1	Gwerder Brothers	78,214	14,649
7497-1	Te Rua O te Moko 2B Ahuwhenua Trust	28,470	2,317
7540-1	AJ & DI Dravitzki Trusts Partnership	18,250	n/a – no requirement
7608-1	MD Aiken Family Trust	9,125	n/a – no requirement
7711-1	Pariroa Marae (The Trustees)	18,250	25.3
7783-1	Norwood Farm Partnership	51,100	38,663
7969-1	AB Middleton	51,100	n/a – no requirement
9747-1	DP & JH Roper Family Trust Partnership	36,500	18,466
9886-1	Sona Chosta Limited	24,455	18,769
9900-1	Kaipu Holdings Limited	220,752	98,939
9910-1	PKW Farms LP	40,150	21,885
9947-1	Ngatoro Poultry Limited	127,020	20,528
10029-1	Hernly Farms Limited	126,144	16,517
10112-1	Construction Mechanics (1993) Limited	47,450	0
10113-1	PKW Farms LP	45,625	18,056
10120-1	SC & MJ O'Neill Family Trust	43,800	n/a – no requirement
10199-1	ClearAz Taranaki Spring Water	2007.5	166.3

Twenty five of the consents had an end of year site inspection, with seven of these being found to be non-compliant with their consent conditions (Table 3).

Table 3 Consent non-compliances found during 2015-2016

Consent	Consent holder	Breach	Outcome
1190-3	Pungarehu Farmers Group Water Scheme	Multiple rate breaches	14 day letter issued. Letter of explanation received and Council accepted. Breaches caused by a mechanical failure, and the fault has since been addressed.
5990-1	ID & JA Armstrong	Multiple volume breaches	14 day letter issued. Letter of explanation received. An abatement notice was issued requiring consent holder to cease breaching consent conditions. A re-inspection will be undertaken to ensure compliance.
6380-1	Caiseal Trust Partnership	Rate breaches	14 day letter issued. Letter of explanation received and Council accepted. Breach was a result of system failure, which were repaired once realised. No further breaches occurred after this point.
6903-1	Awatea Hawkes Bay Trust	Inadequate records	14 day letter issued. Letter of explanation received and Council accepted. Records were only weekly readings rather than daily as stipulated in the consent. Consent holder now has a datalogger.
7783-1	Norwood Farm Partnership	Rate breaches	14 day letter issued. Further investigation by consent holder discovered false spikes were being registered by the datalogger, as system cannot take at rates recorded. Council accepts there was no breach. Council staff are working with consent holder to resolve the problem.
9910-1	PKW Farms LP	Records late and rate breaches	14 day letter issued. Letter of explanation received and Council accepted. Fault due to unforeseen infrastructure damage. Consent holder has done significant works to ensure breach does not re-occur.
10113-1	PKW Farm LP	Rate and volume breaches	14 day letter issued. Letter of explanation received and Council accepted. An abatement notice was issued requiring consent holder to cease breaching consent conditions. An infringement notice was then issued, as the consent holder advised that they had breached their rate again. Consent holder has requested a change in consent conditions.

Summary

Of the 25 sites inspected, there was a 28% non-compliance rate, with a majority of these being for the breaching their abstraction rate or volume. Council will continue to work with all consent holders to ensure they do not exceed their limits in future seasons.

The biggest water user for the 2015-2016 season was Kaipī Holdings with 98,939 m³. The average annual water use across all consents was 23,341 m³.

The Council will continue to monitor these water takes and any new consents that may be granted in the future, as although they are relatively minor in size, it is still important to manage the resources and assess if there are any adverse environmental effects arising from the exercising of these consents.