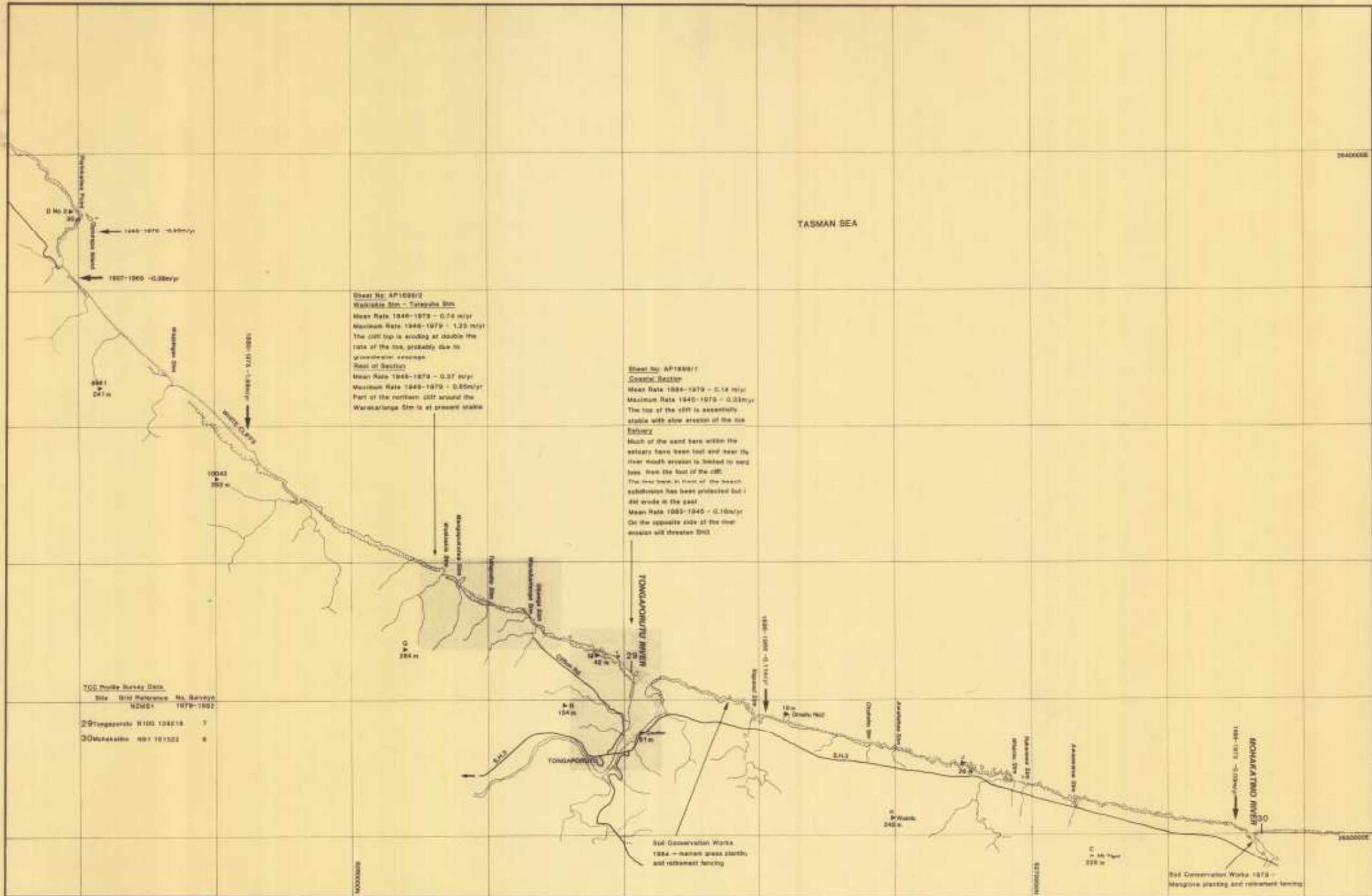


6.2 Appendix II: Taranaki Coastal Series Maps (TCC, 1987)

1. Clifton County – Mohakatino River to Pariokariwa Point (#650459)
2. Clifton County – Waiiti to Motunui (#650461)
3. Clifton County, North Taranaki District County and New Plymouth City – Waitara to the Port (#650462)
4. North Taranaki District – Port to Kaihihi Stream (#650471)
5. North Taranaki District and Egmont County – Kaihihi Stream to Waitaha Stream (#650470)



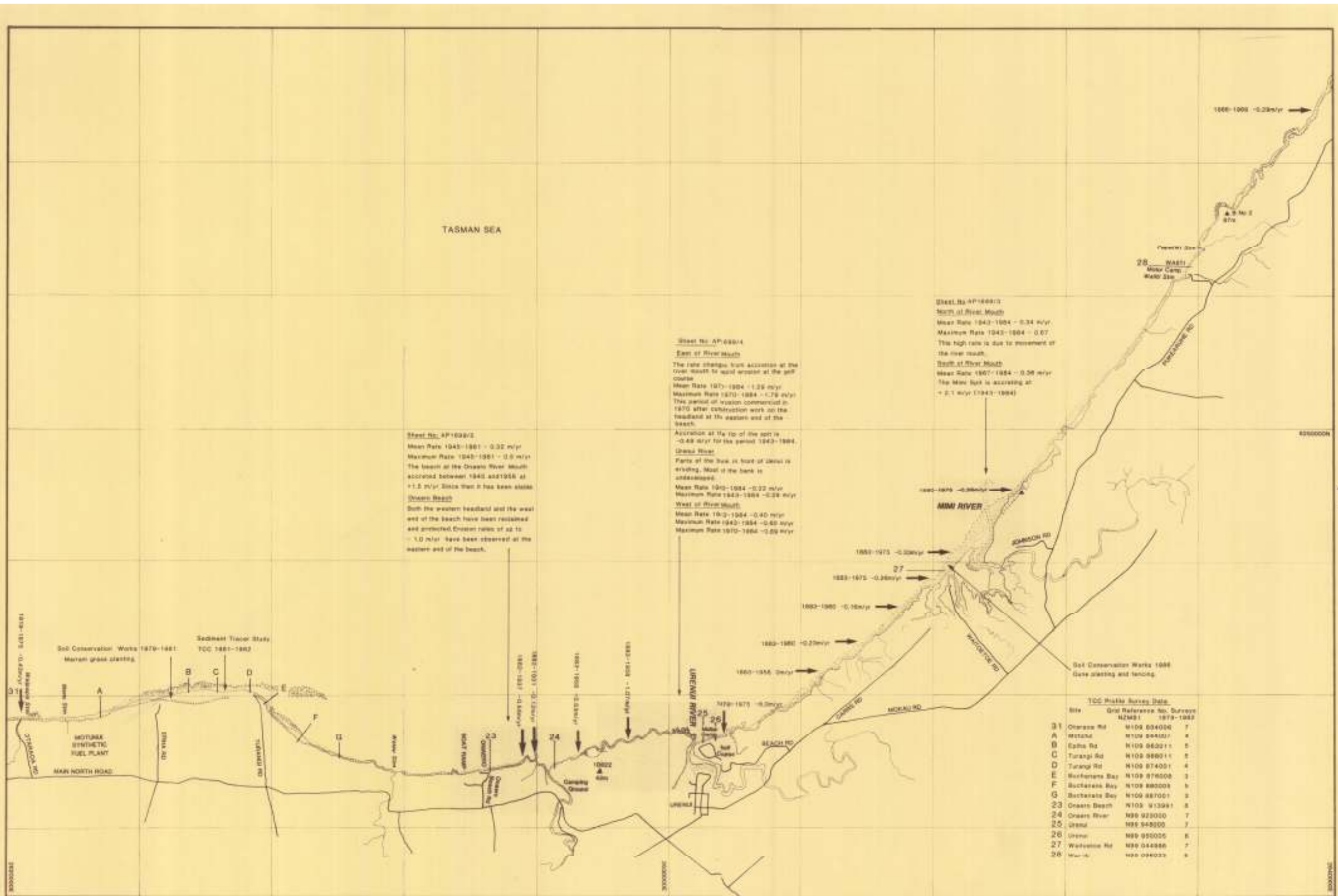
TARANAKI CATCHMENT COMMISSION

COASTAL EROSION RATES AND DATA INDEX
 CLIFTON COUNTY

TARANAKI COASTAL SERIES

1

DRAWN: B. Matthews	DESIGNED: B. Matthews	SCALE: 1:25,000	DATED: 1987
TRACED: B. Stone	DATE: FEBRUARY 1987		W/T 1/10



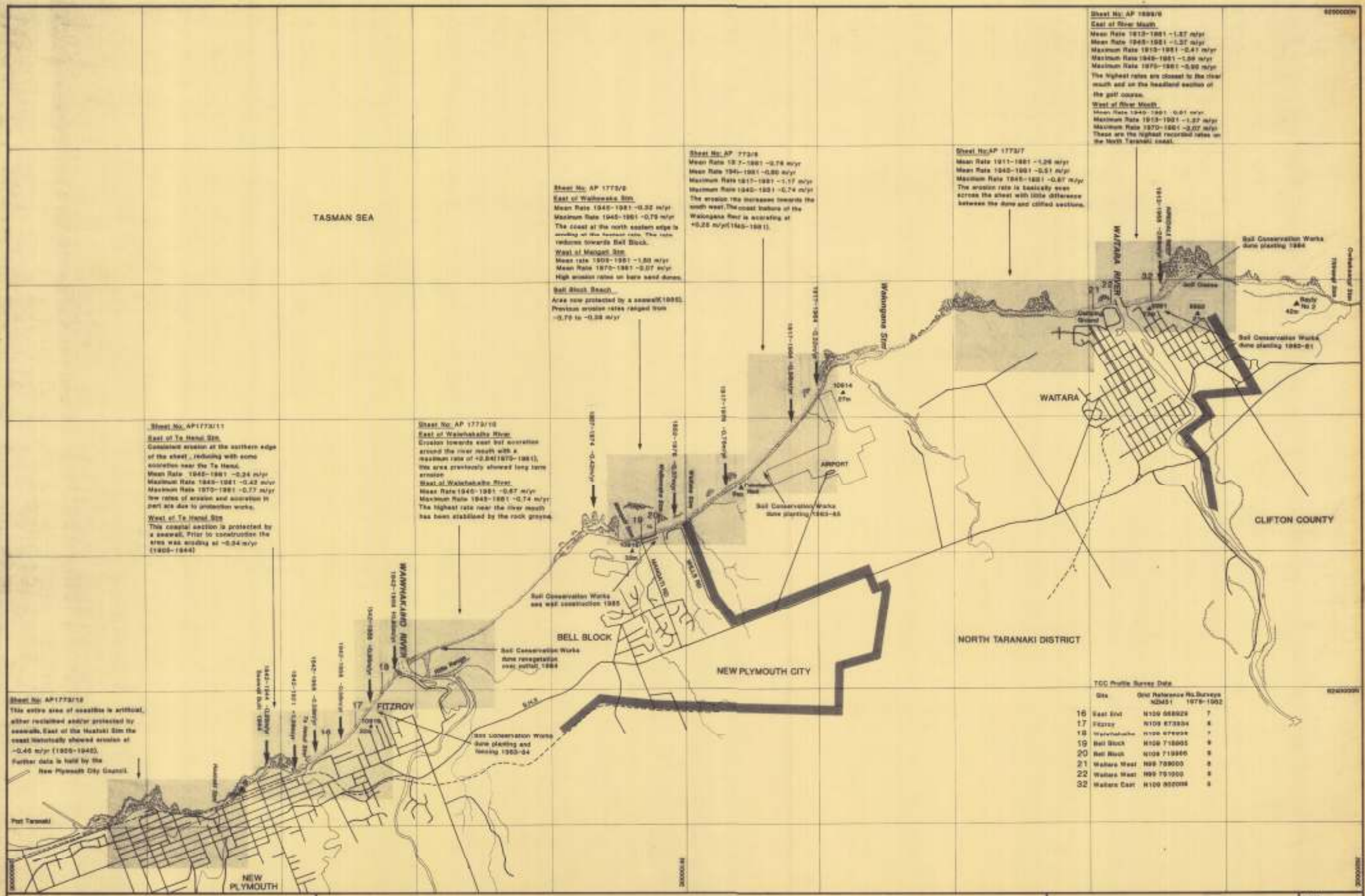
Sheet No. AP1628/2
 Mean Rate 1943-1961 - 0.32 m/yr
 Maximum Rate 1943-1961 - 0.5 m/yr
 The beach at the Oturoa River Mouth accreted between 1943 and 1956 at +1.5 m/yr. Since then it has been stable.
Oturoa Beach
 Both the western headland and the west end of the beach have been retained and protected. Erosion rates of 32 to -1.0 m/yr have been observed at the eastern end of the beach.

Sheet No. AP1628/4
East of River Mouth
 The rate changes from accretion at the river mouth to rapid erosion at the golf course.
 Mean Rate 1973-1984 - 1.29 m/yr
 Maximum Rate 1973-1984 - 1.79 m/yr
 This period of erosion commenced in 1970 after construction work on the headland at the eastern end of the beach.
 Accretion at the tip of the spit is -0.48 m/yr for the period 1943-1984.
Oturoa River
 Parts of the bank in front of Oturoa is eroding. Most of the bank is undisturbed.
 Mean Rate 1943-1984 - 0.32 m/yr
 Maximum Rate 1943-1984 - 0.28 m/yr
West of River Mouth
 Mean Rate 1973-1984 - 0.40 m/yr
 Maximum Rate 1943-1984 - 0.40 m/yr
 Maximum Rate 1973-1984 - 0.28 m/yr

Sheet No. AP1628/3
North of River Mouth
 Mean Rate 1943-1984 - 0.34 m/yr
 Maximum Rate 1943-1984 - 0.67
 This high rate is due to movement of the river mouth.
South of River Mouth
 Mean Rate 1967-1984 - 0.38 m/yr
 The Mean Spit is accreting at +2.1 m/yr (1943-1984)

TCC Photo Survey Data

Site	Grid Reference No. Survey	NZMS 1	1979-1982
31	Oturoa Rd	N109 034000	7
A	Waiwaka	N109 046000	4
B	Eshta Rd	N109 062000	5
C	Turangi Rd	N109 080000	5
D	Turangi Rd	N109 074000	4
E	Waiwaka Bay	N109 078000	3
F	Bucklers Bay	N109 080000	5
G	Bucklers Bay	N109 087000	3
23	Oturoa Beach	N109 013991	5
24	Oturoa River	N109 023000	7
25	Uturoa	N109 048000	7
26	Uturoa	N109 055000	5
27	Waiwaka Rd	N109 044886	7
28	Waiwaka	N109 046000	5



TARANAKI CATCHMENT COMMISSION

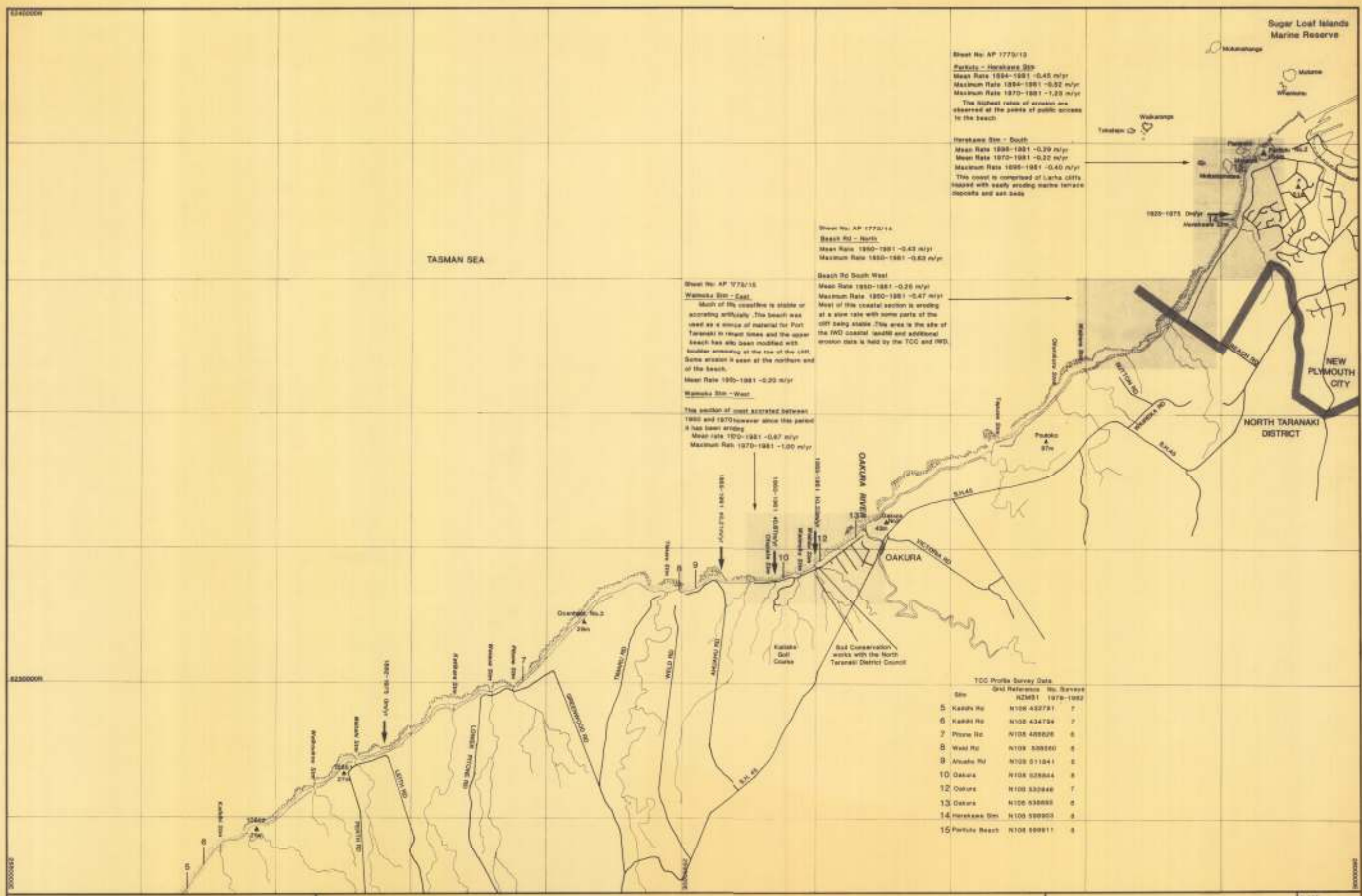
COASTAL EROSION RATES AND DATA INDEX
CLIFTON COUNTY, NORTH TARANAKI DISTRICT COUNTY and NEW PLYMOUTH CITY

TARANAKI COASTAL SERIES

3

Drawn: B. Matthews Checked: B. Matthews Scale: 1:25,000
Traced: B. Webb Date: FEBRUARY 1987 Sheet of: T. 5/10

15192/1



TARANAKI CATCHMENT COMMISSION

COASTAL EROSION RATES AND DATA INDEX
 NORTH TARANAKI DISTRICT

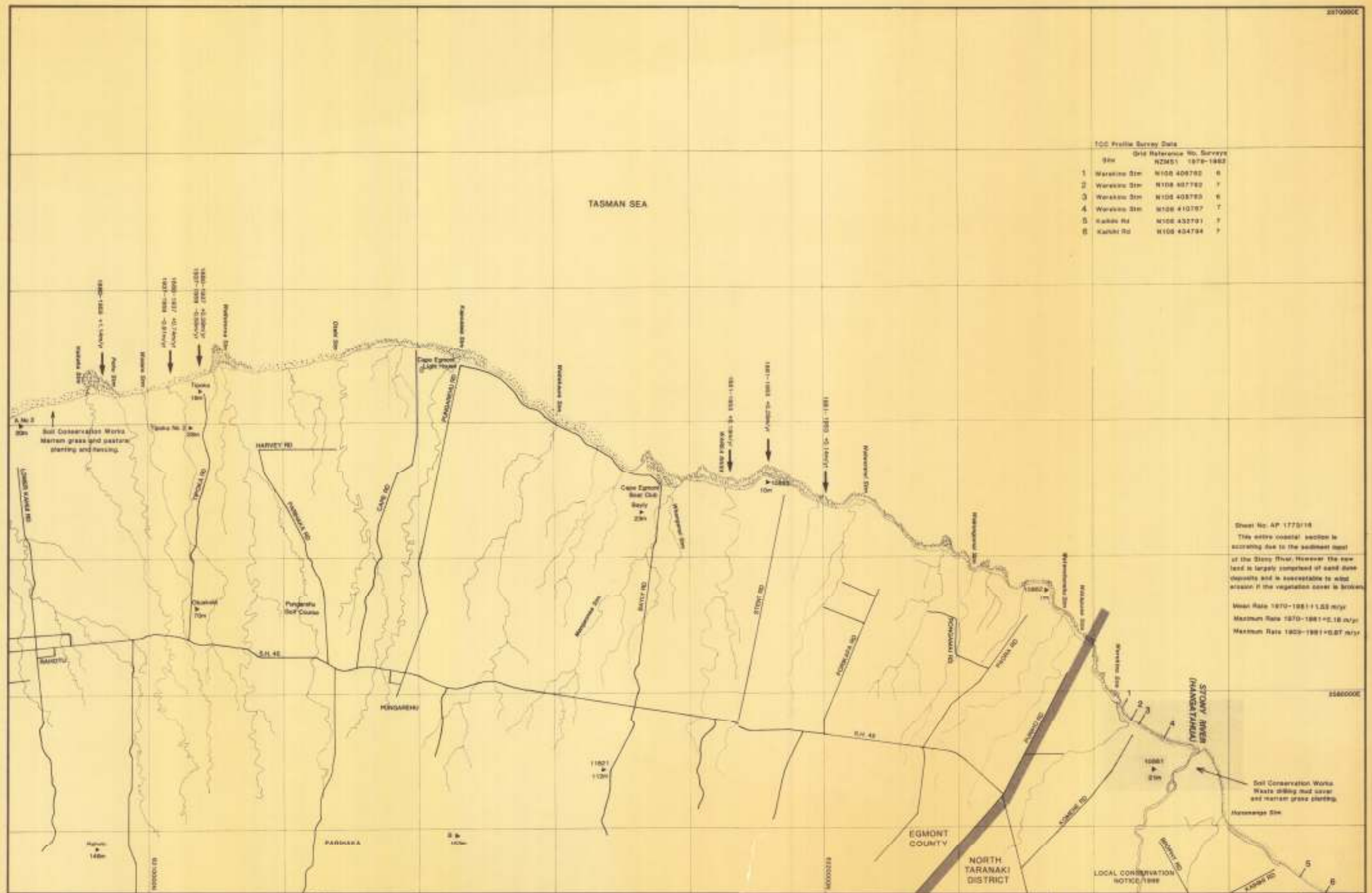
TARANAKI COASTAL SERIES

4

DRAWN R. Matthews CHECKED R. Matthews
 1943/10 R. White DATE FEBRUARY 1987
 SCALE 1 : 25,000
 SHEET T 1/10

100 Profile Survey Data

Sta	Grid Reference No. Survey	NZMS 1979-1982
1	Wakapu Stn	N108 408782 6
2	Wakapu Stn	N108 407782 7
3	Wakapu Stn	N108 408783 6
4	Wakapu Stn	N108 410787 7
5	Kakahi Rd	N108 432791 7
6	Kakahi Rd	N108 434794 7



Sheet No. AP 1770/18
 This entire coastal section is accreting due to the sediment input of the Stour River. However the new land is largely comprised of sand dune deposits and is susceptible to wind erosion if the vegetation cover is broken.
 Mean Rate 1970-1981 = 1.25 m/yr
 Maximum Rate 1970-1981 = 0.18 m/yr
 Maximum Rate 1982-1981 = 0.87 m/yr

TARANAKI CATCHMENT COMMISSION

COASTAL EROSION RATES AND DATA INDEX
NORTH TARANAKI DISTRICT - EGMONT COUNTY

TARANAKI COASTAL SERIES

5

DRIVEN R. Matthews	CHECKED R. Matthews	SCALE	SHEET
TRACKED R. Roddy	DATE FEBRUARY 1987	1 : 25,000	OF T 3/10