

RKM Farms Ltd (Piggery)

Monitoring Programme

Annual Report

2020-2021

Technical Report 2021-10



Working with people | caring for Taranaki



Taranaki Regional Council
Private Bag 713
Stratford

ISSN: 1178-1467 (Online)
Document: 2797525 (Word)
Document: 2856700 (Pdf)
November 2021

RKM Farms Ltd (Piggery)

Monitoring Programme

Annual Report

2020-2021

Technical Report 2021-10

Taranaki Regional Council
Private Bag 713
Stratford

ISSN: 1178-1467 (Online)
Document: 2797525 (Word)
Document: 2856700 (Pdf)
November 2021

Executive summary

RKM Farms Ltd (the Company) operates a piggery located on 599A South Road at Hawera, in the Tangahoe catchment. The piggery is a breeder grower and finishing operation with up to 5,000 pigs and piglets at any one time, employing between four and five full time staff.

During the monitoring period, RKM Farms Ltd demonstrated an overall good level of environmental performance.

This report for the period July 2020 to June 2021 describes the monitoring programme implemented by the Taranaki Regional Council (the Council) to assess the Company's environmental and consent compliance performance during the period under review. The report also details the results of the monitoring undertaken and assesses the environmental effects of the Company's activities.

The Company holds two resource consents, which include a total of 13 conditions setting out the requirements that the Company must satisfy. Resource consent 5108-2 allows the discharge of treated effluent into the Tawhiti Stream, and consent 5266-2 relates to the discharge of emissions into the air at this site.

The Council's monitoring programme for the year under review included four inspections and the collection of two wastewater and receiving water samples collected for physicochemical analysis

The monitoring showed that the wastewater and receiving water samples were well within the consented limits as shown in previous years, the monitoring indicated there was one unauthorised incident recording non-compliance in respect of this consent holder during the period under review.

During the year, the Company demonstrated a good level of environmental and high administrative performance with the resource consents during the year under review.

No non-compliant odour incidents were recorded during the period under review.

For reference, in the 2020-2021 year, consent holders were found to achieve a high level of environmental performance and compliance for 86% of the consents monitored through the Taranaki tailored monitoring programmes, while for another 11% of the consents, a good level of environmental performance and compliance was achieved.

This report includes recommendations for the 2021-2022 year, including recommendations relating to an optional review of consents 5108-2 and 5266-2.

Table of contents

	Page	
1	Introduction	1
1.1	Compliance monitoring programme reports and the Resource Management Act 1991	1
1.1.1	Introduction	1
1.1.2	Structure of this report	1
1.1.3	The Resource Management Act 1991 and monitoring	2
1.1.4	Evaluation of environmental and administrative performance	2
1.2	Process description	4
1.3	Resource consents	4
1.4	Monitoring programme	5
1.4.1	Introduction	5
1.4.2	Programme liaison and management	5
1.4.3	Site inspections	5
1.4.4	Chemical sampling	6
2	Results	7
2.1	Water	7
2.1.1	Inspections	7
2.1.2	Results of abstraction and discharge monitoring	7
2.2	Air	9
2.2.1	Inspections	9
2.2.2	Results of abstraction and discharge monitoring	9
2.3	Incidents, investigations, and interventions	10
3	Discussion	11
3.1	Discussion of site performance	11
3.2	Environmental effects of exercise of consents	11
3.3	Evaluation of performance	11
3.4	Recommendations from the 2019-2020 Annual Report	14
3.5	Alterations to monitoring programmes for 2021-2022	14
3.6	Exercise of optional review of consent	14
4	Recommendations	15
	Glossary of common terms and abbreviations	16
	Bibliography and references	19
	Appendix I Resource consents held by RKM Farms Ltd	

List of tables

Table 1	Piggery inventory as at 30 June 2021	4
Table 2	Summary of resource consents held by RKM Farms and Lloyd Gernhoefer	5
Table 3	Location of sampling sites in Tawhiti Stream including the piggery discharge	7
Table 4	Receiving water and discharge samples 3 November 2020	8
Table 5	Receiving water and discharge samples 19 May 2021	8
Table 6	Summary of treated wastewater analyses from RKM Farms Ltd piggery for the period July 2020 to June 2021	9
Table 7	Incidents, investigations, and interventions summary table	10
Table 8	Evaluation of performance for consent 5108-2	11
Table 9	Evaluation of performance for consent 5266-2	12
Table 10	Summary of performance over the years	13

List of figures

Figure 1	Location of RKM Ltd Piggery	1
----------	-----------------------------	---

1 Introduction

1.1 Compliance monitoring programme reports and the Resource Management Act 1991

1.1.1 Introduction

This report is for the period July 2020 to June 2021 by the Taranaki Regional Council (the Council) on the monitoring programme associated with resource consents held by name in full (the Company). The Company operates a piggery situated on 599A South Road, Hawera, in the Tangahoe catchment (Figure 1).

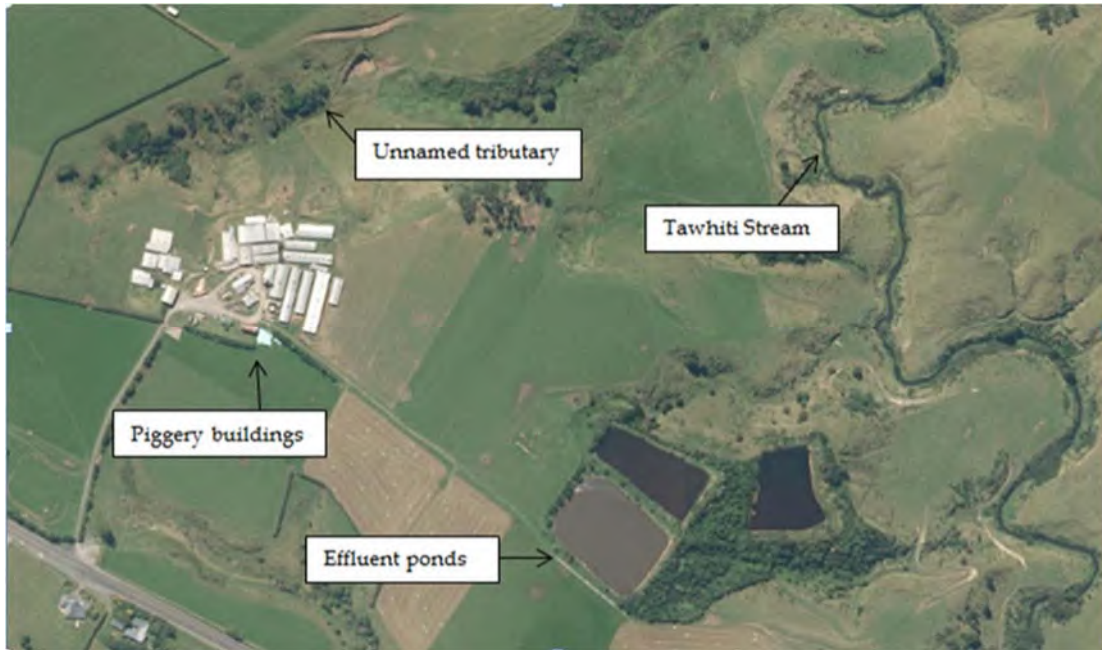


Figure 1 Location of RKM Ltd Piggery

The report includes the results and findings of the monitoring programme implemented by the Council in respect of the consents held by the Company that relate to discharges of water within the Tangahoe catchment, and cover emissions to air from the site.

One of the intents of the *Resource Management Act 1991* (RMA) is that environmental management should be integrated across all media, so that a consent holder's use of water, air, and land should be considered from a single comprehensive environmental perspective. Accordingly, the Council generally implements integrated environmental monitoring programmes and reports the results of the programmes jointly. This report discusses the environmental effects of the Company's use of water, land and air, and is the 11th combined annual report by the Council for the Company.

1.1.2 Structure of this report

Section 1 of this report is a background section. It sets out general information about:

- consent compliance monitoring under the RMA and the Council's obligations;
- the Council's approach to monitoring sites through annual programmes;
- the resource consents held by the Company in the Tangahoe catchment;
- the nature of the monitoring programme in place for the period under review; and
- a description of the activities and operations conducted in the Company's site/catchment.

Section 2 presents the results of monitoring during the period under review, including scientific and technical data.

Section 3 discusses the results, their interpretations, and their significance for the environment.

Section 4 presents recommendations to be implemented in the 2021-2022 monitoring year.

A glossary of common abbreviations and scientific terms, and a bibliography, are presented at the end of the report.

1.1.3 The Resource Management Act 1991 and monitoring

The RMA primarily addresses environmental 'effects' which are defined as positive or adverse, temporary or permanent, past, present or future, or cumulative. Effects may arise in relation to:

- a. the neighbourhood or the wider community around an activity, and may include cultural and social-economic effects;
- b. physical effects on the locality, including landscape, amenity and visual effects;
- c. ecosystems, including effects on plants, animals, or habitats, whether aquatic or terrestrial;
- d. natural and physical resources having special significance (for example recreational, cultural, or aesthetic); and
- e. risks to the neighbourhood or environment.

In drafting and reviewing conditions on discharge permits, and in implementing monitoring programmes, the Council is recognising the comprehensive meaning of 'effects' in as much as is appropriate for each activity. Monitoring programmes are not only based on existing permit conditions, but also on the obligations of the RMA to assess the effects of the exercise of consents. In accordance with Section 35 of the RMA, the Council undertakes compliance monitoring for consents and rules in regional plans, and maintains an overview of the performance of resource users and consent holders. Compliance monitoring, including both activity and impact monitoring, enables the Council to continually re-evaluate its approach and that of consent holders to resource management and, ultimately, through the refinement of methods and considered responsible resource utilisation, to move closer to achieving sustainable development of the region's resources.

1.1.4 Evaluation of environmental and administrative performance

Besides discussing the various details of the performance and extent of compliance by the Company, this report also assigns them a rating for their environmental and administrative performance during the period under review.

Environmental performance is concerned with actual or likely effects on the receiving environment from the activities during the monitoring year. Administrative performance is concerned with the Company's approach to demonstrating consent compliance in site operations and management including the timely provision of information to Council (such as contingency plans and water take data) in accordance with consent conditions.

Events that were beyond the control of the consent holder and unforeseeable (that is a defence under the provisions of the RMA can be established) may be excluded with regard to the performance rating applied. For example loss of data due to a flood destroying deployed field equipment.

The categories used by the Council for this monitoring period, and their interpretation, are as follows:

Environmental Performance

High: No or inconsequential (short-term duration, less than minor in severity) breaches of consent or regional plan parameters resulting from the activity; no adverse effects of significance noted or likely

in the receiving environment. The Council did not record any verified unauthorised incidents involving environmental impacts and was not obliged to issue any abatement notices or infringement notices in relation to such impacts.

Good: Likely or actual adverse effects of activities on the receiving environment were negligible or minor at most. There were some such issues noted during monitoring, from self-reports, or during investigations of incidents reported to the Council by a third party but these items were not critical, and follow-up inspections showed they have been dealt with. These minor issues were resolved positively, co-operatively, and quickly. The Council was not obliged to issue any abatement notices or infringement notices in relation to the minor non-compliant effects; however abatement notices may have been issued to mitigate an identified potential for an environmental effect to occur.

For example:

- High suspended solid values recorded in discharge samples, however the discharge was to land or to receiving waters that were in high flow at the time;
- Strong odour beyond boundary but no residential properties or other recipient nearby.

Improvement required: Likely or actual adverse effects of activities on the receiving environment were more than minor, but not substantial. There were some issues noted during monitoring, from self-reports, or during investigations of incidents reported to the Council by a third party. Cumulative adverse effects of a persistent minor non-compliant activity could elevate a minor issue to this level. Abatement notices and infringement notices may have been issued in respect of effects.

Poor: Likely or actual adverse effects of activities on the receiving environment were significant. There were some items noted during monitoring, from self-reports, or during investigations of incidents reported to the Council by a third party. Cumulative adverse effects of a persistent moderate non-compliant activity could elevate an 'improvement required' issue to this level. Typically there were grounds for either a prosecution or an infringement notice in respect of effects.

Administrative performance

High: The administrative requirements of the resource consents were met, or any failure to do this had trivial consequences and were addressed promptly and co-operatively.

Good: Perhaps some administrative requirements of the resource consents were not met at a particular time, however this was addressed without repeated interventions from the Council staff. Alternatively adequate reason was provided for matters such as the no or late provision of information, interpretation of 'best practical option' for avoiding potential effects, etc.

Improvement required: Repeated interventions to meet the administrative requirements of the resource consents were made by Council staff. These matters took some time to resolve, or remained unresolved at the end of the period under review. The Council may have issued an abatement notice to attain compliance.

Poor: Material failings to meet the administrative requirements of the resource consents. Significant intervention by the Council was required. Typically there were grounds for an infringement notice.

For reference, in the 2020-2021 year, consent holders were found to achieve a high level of environmental performance and compliance for 86% of the consents monitored through the Taranaki tailored monitoring programmes, while for another 11% of the consents, a good level of environmental performance and compliance was achieved¹

¹ The Council has used these compliance grading criteria for more than 17 years. They align closely with the 4 compliance grades in the MfE Best Practice Guidelines for Compliance, Monitoring and Enforcement, 2018

1.2 Process description

The piggery is a breeder, grower and finishing operation holding up to a maximum of 5,000 pigs and piglets (3,636 pig equivalents) onsite at any one time (Table 1). The discharge is made up of effluent and wash water from the piggery operation.

The piggery stock inventory figures supplied by the consent holder remains near the same as the 2019-2020 monitoring period as there has been no significant change in production.

Table 1 Piggery inventory as at 30 June 2021

Type of pigs	No of pigs	Average weight kg	Total weight kg	50 kg Equivalent pigs
Breeding sows (older than 12 months)	270	162	43,740	875
Breeding sows (less than 12 months)	35	75	2,625	53
Boars	10	160	1,600	32
Weaners (less than 10 weeks)	721	18	12,978	260
Growers (10-17 weeks)	895	44	39,380	788
Growers (older than 17 weeks)	390	65	25,350	507
Total	2,351			2,515

Approximately 70 m³ of wastewater is discharged on a daily basis. The wastewater from around the piggery is gravity fed to a series of sumps and is then mixed and pumped from the sumps to the oxidation pond treatment system.

The treatment system comprises of three ponds. The first pond, which is anaerobic in nature, is designed to capture the solid component of the discharge, and has an approximate holding capacity of 34,587 m³. The second and third ponds are aerobic and have a total of 10,350 m³ and 10,800 m³ capacities respectively. The pond treatment system has a combined capacity of approximately 55,737 m³.

The discharge from the pond treatment system flows through a tertiary treatment system, comprised of a wetland which is approximately 1,600 m³ in area. Raupō is planted within the wetland to further treat the discharge.

From the wetland the treated discharge flows through an open drain and directly into the Tawhiti Stream. The treatment system rarely discharges during the warmer months (January to March) because of evaporation within the two aerobic ponds. In addition to discharging to the Tawhiti Stream, effluent including accumulated solids is pumped out of the anaerobic pond and onto land as required.

1.3 Resource consents

The Company holds two resource consents, the details of which are summarised in the table below. Summaries of the conditions attached to each permit are set out in Section 3 of this report.

Lloyd Gernhoefer Contractor Ltd holds consent **5352-3** to discharge the contents of effluent treatment ponds, dairy effluent storage ponds, and solids from herd homes to land throughout the Taranaki region

A summary of the various consent types issued by the Council is included in Appendix I, as are copies of all permits held by the Company during the period under review.

Table 2 Summary of resource consents held by RKM Farms and Lloyd Gernhoefer

Consent holder	Consent number	Purpose	Granted	Review	Expires
<i>Water discharge permits</i>					
RKM Farms Ltd	5108-2	To discharge treated piggery effluent into Tawhiti Stream	August 2012	June 2022	June 1 2028
<i>Air discharge permit</i>					
RKM Farms Ltd	5266-2.0	To discharge piggery operation and associated emissions to air	May 2017	June 2022	June 1 2028
<i>Discharges of waste to land</i>					
Lloyd Gernhoefer Contractor Ltd	5352-3	To irrigate effluent to land	March 2021	June 2025	December 1 2029

1.4 Monitoring programme

1.4.1 Introduction

Section 35 of the RMA sets obligations upon the Council to gather information, monitor and conduct research on the exercise of resource consents within the Taranaki region. The Council is also required to assess the effects arising from the exercising of these consents and report upon them.

The Council may therefore make and record measurements of physical and chemical parameters, take samples for analysis, carry out surveys and inspections, conduct investigations and seek information from consent holders.

The monitoring programme for the RKM Farms Ltd (Piggery) site consisted of three primary components.

1.4.2 Programme liaison and management

There is generally a significant investment of time and resources by the Council in:

- ongoing liaison with resource consent holders over consent conditions and their interpretation and application;
- discussion over monitoring requirements;
- preparation for any consent reviews, renewals or new consent applications;
- advice on the Council's environmental management strategies and content of regional plans; and
- consultation on associated matters.

1.4.3 Site inspections

The Company's site was visited four times during the monitoring period. With regard to consents for the abstraction of or discharge to water, the main points of interest were plant processes with potential or actual discharges to receiving watercourses, including contaminated stormwater and process wastewaters. Normally, only three inspections are conducted as in previous years, but during this period under review non-compliance was noted therefore an extra follow-up inspection was needed.

The piggery was also visited on two separate occasions, to monitor and collect wastewater discharge samples from the site and water quality samples upstream and downstream of the discharge point and mixing zone. Sources of data being collected by the Company were identified and accessed, so that

performance in respect of operation, internal monitoring, and supervision could be reviewed by the Council. The neighbourhood was surveyed for environmental effects.

As far as practical, inspections related to air emissions were integrated with inspections undertaken for other purposes for example inspection of the oxidation ponds. The air monitoring component focuses on processes with associated actual and potential emission sources and characteristics, including potential odour.

1.4.4 Chemical sampling

The Council undertook sampling of both the discharges from the site and the water quality upstream and downstream of the discharge point and mixing zone. The monitoring programme allows for the discharge and receiving water to be sampled on two occasions.

The treated effluent discharge was sampled on two occasions, and the sample analysed for biochemical oxygen demand (BOD), chloride, conductivity, dissolved reactive phosphate (DRP), unionised ammonia, pH, suspended solids, turbidity and temperature.

The Tawhiti Stream, upstream and downstream of the discharge was sampled on two occasions, and the sample analysed for carbonaceous biochemical oxygen demand (CBOD), chloride, conductivity, dissolved reactive phosphate (DRP), unionised ammonia, pH, suspended solids, turbidity and temperature.

2 Results

2.1 Water

2.1.1 Inspections

The piggery site was inspected on three separate occasions during the 2020-2021 monitoring period. These inspections were carried out on 9 October 2020, 4 March 2021, and the 20 May 2021. A follow up inspection was undertaken on the 2 November 2020 due to non-compliance found during the first inspection (Section 2.3)

Consent 5108-2 Special Condition 3 requires that the number of pigs (equivalent to 50 kg per pig) on the property at any one time shall not exceed 3,636 pig equivalents. Inventory figures supplied by the consent holder for the 2020-2021 monitoring year shows a slight decrease to pig equivalents. Inventory for the 2019-2020 monitoring year was approximately 2,515 pig equivalents.

Discussion over the monitoring period included the general production inventory, piggery buildings, feed regime in relation to source and odour, and laboratory results in relation to consent conditions and biosecurity requirements.

During the three inspections no objectionable or offensive odours were detected beyond the boundary. Only noticeable odours were detected emanating slightly downwind of the main pond and also around the offal pit.

Water quality samples were collected on two occasions, 3 November 2020 and 19 May 2021. No visual environmental impacts were observed downstream of the treated piggery discharge.

The ponds also looked to be working well with good microbial activity in the anaerobic pond.

During this monitoring period no effluent/solids were applied to land. The ponds are well sized for maximum production of 3,636 pig equivalents and with production numbers down the pond is at only 69% capacity. Desludging the ponds may be required if production is increased significantly.

Overall the piggery appeared to be maintained and well managed.

2.1.2 Results of abstraction and discharge monitoring

Receiving waters physicochemical monitoring

The consent holders' farm boundary borders along the true right bank of Tawhiti Stream to where it meets the Tangahoe River, and along the river to South Road Bridge. Environmental monitoring sites are provided in relation to the piggery operation's discharge point (Table 3).

Table 3 Location of sampling sites in Tawhiti Stream including the piggery discharge

Site	Site Code	GPS reference	Location
Tawhiti Stream	TWH000495	E1715350 N5614243	20 metres upstream of piggery discharge
Piggery effluent	PGP003001	E1715305 N5614206	Discharge outlet from aerobic pond
Tawhiti Stream	TWH000496	E1715356 N5614111	30 metres downstream of piggery discharge

Samples were collected from the discharge point as well as upstream and downstream of the discharge on two occasions during the monitoring year under review.

Results of the survey performed on 3 November 2020 are presented in Table 4. On this occasion the stream was running at a moderate swift flow, clear and uncoloured. The ponds' treated wastewater discharge was estimated at about 0.25 L/s and light tannin brown in colour with only a slight organic odour being recognised in the sample. The weather was dry but overcast at the time of sampling. The wastewater discharge from the wetland showed no downstream environmental impact on the Tawhiti Stream. The results below show the parameters tested were well within consented limits.

Table 4 Receiving water and discharge samples 3 November 2020

Parameter	Units	PGP003001 Discharge	TWH000495 Upstream	TWH000496 Downstream
Time of sample collection	hrs/NZST	1120	1100	1135
Temperature	°C	17.5	16.4	16.4
pH	pH units	7.9	8.0	8.0
Un-ionised ammonia	g/m ³ N	0.56	0.0004	0.0010
Ammoniacal nitrogen	g/m ³ N	21	0.013	0.030
BOD ₅	g/m ³	20	-	-
BOD ₅ (filtered, carbonaceous)	g/m ³	-	<1.0	<1.0
Chloride	g/m ³	310	31	31
Conductivity @ 25°C	mS/m	179.9	29.5	29.3
DRP	g/m ³ P	16.5	0.030	0.035
Suspended solids	g/m ³	27	13	13
Turbidity	FNU	17.3	8.6	8.8

Results of the survey performed on 19 May are presented in Table 5. The Tawhiti Stream was running at a moderately swift flow and slightly turbid light brown in colour. No visual environmental effects were observed in the Tawhiti Stream from the piggery discharge near the downstream monitoring site. The ponds were showing light microbial activity due to lower May temperatures. There was also minimal odour emitting from the ponds. These samples were collected during dry overcast weather conditions.

Table 5 Receiving water and discharge samples 19 May 2021

Parameter	Units	PGP003001 Discharge	TWH000495 Upstream	TWH000496 Downstream
Time of sample collection	hrs/NZST	1050	1105	1120
Temperature	°C	12.5	13.6	13.2
pH	pH units	7.9	7.6	7.6
Un-ionised ammonia	g/m ³ N	0.24	0.00067	0.00078
Ammoniacal nitrogen	g/m ³ N	14.1	0.074	0.088
BOD ₅	g/m ³	26	-	-
BOD ₅ (filtered, carbonaceous)	g/m ³	-	<1.0	<1.0
Chloride	g/m ³	400	33	33
Conductivity @ 25°C	mS/m	211	26.9	27.0
DRP	g/m ³ P	23	0.046	0.067
Suspended solids	g/m ³	126	26	22

Parameter	Units	PGP003001 Discharge	TWH000495 Upstream	TWH000496 Downstream
Turbidity	FNU	61	16.6	16.4

Special consent condition 4b specifies that after a mixing zone of 30 m downstream of where the discharge enters the Tawhiti Stream, the un-ionised ammonia level shall not exceed 0.025 g/m³. The above results showed a slight increase in un-ionised ammonia, well within consenting limits.

Special consent condition 4a specifies that after a mixing zone of 30 m downstream of where the discharge enters the Tawhiti Stream, filtered carbonaceous biochemical oxygen demand must not exceed 2.00 g/m³. The above results show no measureable increase of BOD, well within consenting limits.

Although not a consent requirement the above results indicate that good dilution in the Tawhiti Stream has been maintained.

Table 6 Summary of treated wastewater analyses from RKM Farms Ltd piggery for the period July 2020 to June 2021

Parameter	Units	3 November 2020	19 May 2021	Mean
Conductivity @ 25°C	mS/m	179.9	211	196
Chloride	g/m ³	310	400	355
pH	pH Units	7.9	7.9	7.9
Total carbonaceous BOD ₅	g/m ³	20	26	23
Ammoniacal nitrogen	g/m ³ N	21	14.1	17.5
DRP	g/ g/m ³ P	16.5	23	19.7
Suspended solids	g/m ³	27	126	153

Monitoring of wastewater on the two occasions during the 2020-2021 year indicated that the wastewater was well treated in terms of BOD, turbidity, and pH, with nutrient levels within an acceptable range (Table 6). The only note is that the amount of suspended solids had significantly increased in May 2021 compared to November 2020. However, this is still acceptable for autumn monitoring with turbid swift river conditions.

2.2 Air

2.2.1 Inspections

As far as practicable, inspections relating to air emissions were integrated with inspections undertaken for other purposes.

2.2.2 Results of abstraction and discharge monitoring

The RMA effectively requires that there should be no offensive or objectionable odour beyond the boundary of the farm.

Odours emitted from normal piggery operations are generally influenced by weather conditions (i.e. wind direction), effluent treatment, pond management, irrigating sludge to land and general piggery hygiene practices.

The offensiveness of odour at any time is reliant on individual perception, Council methods of measurement, and practices of the pork producer. The Environmental Management System (EMS) deals with

piggery operational practices ensuring the effect of odour is taken into account when the pork producer is undertaking activities relating to different areas of the piggery.

All inspections that were carried out during the monitoring period found 'normal to slightly noticeable' piggery type odour emanating downwind of the piggery and near the offal pit. In general, wind conditions were from the western quarter and were only slight. No odour emissions were 'noted' beyond the perimeter of the property boundary. Therefore, odours were restricted to the property and not considered likely to impact neighbouring properties.

2.3 Incidents, investigations, and interventions

The monitoring programme for the year was based on what was considered to be an appropriate level of monitoring, review of data, and liaison with the consent holder. During the year matters may arise which require additional activity by the Council, for example provision of advice and information, or investigation of potential or actual causes of non-compliance or failure to maintain good practices. A pro-active approach that in the first instance avoids issues occurring is favoured.

The Council operates and maintains a register of all complaints or reported and discovered excursions from acceptable limits and practices, including non-compliance with consents, which may damage the environment. The incident register includes events where the Company concerned has itself notified the Council. The register contains details of any investigation and corrective action taken.

Complaints may be alleged to be associated with a particular site. If there is potentially an issue of legal liability, the Council must be able to prove by investigation that the identified company is indeed the source of the incident (or that the allegation cannot be proven).

Table 7 below sets out details of any incidents recorded, additional investigations, or interventions required by the Council in relation to the Company's activities during the 2020-2021 period. This table presents details of all events that required further investigation or intervention regardless of whether these were found to be compliant or not.

Table 7 Incidents, investigations, and interventions summary table

Date	Details	Compliant (Y/N)	Enforcement Action Taken?	Outcome
9/10/2020	Unauthorised discharge of piggery effluent to land and water	N	Yes	Abatement notice issued. Required work on piggery effluent system and fined \$750.00

This non-compliant incident was noted during a regular council monitoring inspection on the 9 October 2020, and was related to unauthorised piggery effluent discharge coming from the sumps to land and to an unnamed tributary of the Tawhiti stream. It was advised that the Company undertake work to the piggery effluent system to ensure further compliance.

3 Discussion

3.1 Discussion of site performance

Compliance inspections were carried out during the 2020-2021 monitoring year by the Council officers found the piggery to be a well-managed operation. All wastewater treatment facilities and disposal processes were adequately maintained. No complaints were received by the council during the 2020-2021 monitoring period. The piggery has now been operating for nearly a century and has indicated good compliance during previous monitoring periods. .

In terms of consents held:

To discharge treated piggery effluent into Tawhiti Stream, consent **5108-2**.

Results from upstream and downstream the discharge outlet indicated only slight increases in chemical analyses, showing that the discharge is have little to no effect on the receiving waters, and there is good dilution in the stream and minimal environmental impacts.

On one occasion there was non-compliance noted during routine inspection with regards to unauthorised effluent discharge to an unnamed tributary of the Tawhiti Stream. This was the result of a broken sump, and the Company undertook appropriate work to the system to ensure further compliance.

To discharge piggery operation and associated emissions to air, consent **5266-2.0**.

There were no process changes undertaken by the Company during the monitoring period. All 'normal to slightly noticeable' piggery type odours were only observed downwind of the offal pit. No other odour emissions were noted beyond the perimeter of the property, and were not considered to impact neighbouring properties.

Overall, the Company was found to have performed well in the period under review with regards to their consents and performance.

3.2 Environmental effects of exercise of consents

The discharge of wastewater to Tawhiti stream was recorded to have little to no environmental impacts outside or inside the mixing zone, the stream was highly turbid at sampling time so this could be a causing factor. Given the high flow conditions there was relatively small increase in nutrients observed downstream of the discharge as well.

In regard to air emissions from the piggery and effluent treatment system, there were no incidents related to odours beyond the site boundary. Inspections by Council found local odour around the effluent drains and collection area.

3.3 Evaluation of performance

A tabular summary of the consent holder's compliance record for the year under review is set out in Tables 7 and 8.

Table 8 Evaluation of performance for consent 5108-2

Purpose: To discharge treated piggery effluent from an oxidation ponds system followed by tertiary treatment into water		
Condition requirement	Means of monitoring during period under review	Compliance achieved?
1. Provision of wastewater plan	Plan received by Council Nov 2010	Yes

Purpose: To discharge treated piggery effluent from an oxidation ponds system followed by tertiary treatment into water		
Condition requirement	Means of monitoring during period under review	Compliance achieved?
2. Adoption of best practical option to avoid or minimise adverse effects	Liaison with Company and inspection	No. Unauthorised discharge observed during a routine investigation. Abatement issued.
3. Maximum allowable number of pig equivalents	Liaison with Company	Yes
4. Specified limits in receiving water after mixing	Inspection and physicochemical sampling	Yes
5. Optional review provision	Consent expires June 2028 – next review June 2022	N/A
Overall assessment of consent compliance and environmental performance in respect of this consent		Good
Overall assessment of administrative performance in respect of this consent		High

N/A = not applicable

Table 9 Evaluation of performance for consent 5266-2

Purpose: To discharge emissions to air from a pig farming operation and associated practices including effluent treatment and other waste management activities		
Condition requirement	Means of monitoring during period under review	Compliance achieved?
1. Maximum allowable number of pig equivalents	Liaison with Company	Yes
2. Adoption of best practical option	Liaison with Company and inspection	Yes
3. Consultation and approval prior to alterations to plant and process	Liaison with Company	N/A
4. Minimisation of impact and emissions through use of equipment and suitable methods	Monitoring inspections	Yes
5. Objectionable odour at site boundary not permitted	Monitoring inspections	Yes
6. Optional review provision	Consent expires June 2028 – next review June 2022	N/A
Overall assessment of consent compliance and environmental performance in respect of this consent		High
Overall assessment of administrative performance in respect of this consent		High

N/A = not applicable

Table 10 Summary of performance over the years

Year	Consent no	High	Good	Improvement req	Poor
2013-2014	5108	1	-	-	-
	5266	1	-	-	-
2014-2015	5108	1	-	-	-
	5266	1	-	-	-
2015-2016	5108	1	-	-	-
	5266	1	-	-	-
2016-2017	5108	1	-	-	-
	5266	1	-	-	-
2017-2018	5108	1	-	-	-
	5266	1	-	-	-
2018-2019	5108	1	-	-	-
	5266	1	-	-	-
2019-2020	5108	1	-	-	-
	5266	1	-	-	-
2020-2021	5108	-	1	-	-
	5266	1	-	-	-
Totals		15	1	-	-

During the year, the Company demonstrated a good level of environmental and high level of administrative performance with the resource consents as defined in Section 1.1.4.

3.4 Recommendations from the 2019-2020 Annual Report

1. THAT in the first instance, monitoring of consented activities at Company's piggery in the 2020-2021 year continue at the same level as in 2019-2020.
2. THAT the provisions in the monitoring programme to sample the discharge and receiving waters on two separate occasions remain unchanged.
3. THAT the consent holder continues to notify Council with information when solids are extracted from the main pond for disposal, including details of where the solids are spread over land.
4. THAT the inspections for the 2020-2021 period continue at three inspections and these inspections are to be carried out on a four-monthly basis.
5. That should there be issues with environmental or administrative performance in 2020-2021, monitoring may be adjusted to reflect any additional investigative or intervention as found necessary.

3.5 Alterations to monitoring programmes for 2021-2022

In designing and implementing the monitoring programmes for air/water discharges in the region, the Council has taken into account:

- the extent of information already made available through monitoring or other means to date;
- its relevance under the RMA;
- the Council's obligations to monitor consented activities and their effects under the RMA;
- the record of administrative and environmental performances of the consent holder; and
- reporting to the regional community.

The Council also takes into account the scope of assessments required at the time of renewal of permits, and the need to maintain a sound understanding of industrial processes within Taranaki exercising resource consents.

It is proposed that for 2021-2022 there will not be any significant alteration to the monitoring programme.

It should be noted that the proposed programme represents a reasonable and risk-based level of monitoring for the site(s) in question. The Council reserves the right to subsequently adjust the programme from that initially prepared, should the need arise if potential or actual non-compliance is determined at any time during 2021-2022.

3.6 Exercise of optional review of consent

Resource consents 5108-2 and 5266-2 provides for an optional review of the consents in June 2022. Condition five of consent 5108-2 allows the Council to review the consent, if there are grounds that conditions are adequate to deal with any arising adverse effects on the environment relating to discharge of wastewater and/or measures to comply with condition 2 which are necessary to address any adverse effects of the discharge of wastewater from the site and/or to address any apparent deficiencies in the design of the pond treatment system.

Condition six of consent 5266-2 allows the Council to review the consent, if there are grounds that the conditions set are adequate to deal with any adverse effects on the environment from the activity, which were either not foreseen at the time of application or not appropriate to deal with at the time.

Based on the results of monitoring in the year under review, and in previous years as set out in earlier annual compliance monitoring reports, it is considered that there are no grounds that require a review to be pursued or grounds to exercise the review option.

4 Recommendations

1. THAT in the first instance, monitoring of consented activities at Company's piggery in the 2020-2021 year continue at the same level as in 2019-2020.
2. THAT the provisions in the monitoring programme to sample the discharge and receiving waters on two separate occasions remain unchanged.
3. THAT the consent holder continues to notify Council with information when solids are extracted from the main pond for disposal, including details of where the solids are spread over land.
4. THAT the inspections for the 2020-2021 period continue at three inspections and these inspections are to be carried out on a four-monthly basis.
5. THAT should there be issues with environmental or administrative performance in 2020-2021, monitoring may be adjusted to reflect any additional investigative or intervention as found necessary.
6. THAT the option for a review of resource consents 0068-4, 0195-3, 5353-2, and 2452-2 in June 2022, as set out in conditions of the consents, not be exercised, on the grounds that the current conditions are adequate.

Glossary of common terms and abbreviations

The following abbreviations and terms may be used within this report:

Al*	Aluminium.
As*	Arsenic.
Biomonitoring	Assessing the health of the environment using aquatic organisms.
BOD	Biochemical oxygen demand. A measure of the presence of degradable organic matter, taking into account the biological conversion of ammonia to nitrate.
BODF	Biochemical oxygen demand of a filtered sample.
Bund	A wall around a tank to contain its contents in the case of a leak.
CBOD	Carbonaceous biochemical oxygen demand. A measure of the presence of degradable organic matter, excluding the biological conversion of ammonia to nitrate.
cfu	Colony forming units. A measure of the concentration of bacteria usually expressed as per 100 millilitre sample.
COD	Chemical oxygen demand. A measure of the oxygen required to oxidise all matter in a sample by chemical reaction.
Conductivity	Conductivity, an indication of the level of dissolved salts in a sample, usually measured at 25°C and expressed in $\mu\text{S}/\text{cm}$.
Cu*	Copper.
Cumec	A volumetric measure of flow- 1 cubic metre per second ($1 \text{ m}^3\text{s}^{-1}$).
DO	Dissolved oxygen.
DRP	Dissolved reactive phosphorus.
E.coli	Escherichia coli, an indicator of the possible presence of faecal material and pathological micro-organisms. Usually expressed as colony forming units per 100 millilitre sample.
Ent	Enterococci, an indicator of the possible presence of faecal material and pathological micro-organisms. Usually expressed as colony forming units per 100 millilitre of sample.
F	Fluoride.
FC	Faecal coliforms, an indicator of the possible presence of faecal material and pathological micro-organisms. Usually expressed as colony forming units per 100 millilitre sample.
FNU	Formazin nephelometric units, a measure of the turbidity of water.
Fresh	Elevated flow in a stream, such as after heavy rainfall.
$\text{g}/\text{m}^2/\text{day}$	grams/metre ² /day.
g/m^3	Grams per cubic metre, and equivalent to milligrams per litre (mg/L). In water, this is also equivalent to parts per million (ppm), but the same does not apply to gaseous mixtures.
Incident	An event that is alleged or is found to have occurred that may have actual or potential environmental consequences or may involve non-compliance with a consent or rule in a regional plan. Registration of an incident by the Council does not automatically mean such an outcome had actually occurred.

Intervention	Action/s taken by Council to instruct or direct actions be taken to avoid or reduce the likelihood of an incident occurring.
Investigation	Action taken by Council to establish what were the circumstances/events surrounding an incident including any allegations of an incident.
Incident register	The incident register contains a list of events recorded by the Council on the basis that they may have the potential or actual environmental consequences that may represent a breach of a consent or provision in a Regional Plan.
L/s	Litres per second.
m ²	Square Metres.
MCI	Macroinvertebrate community index; a numerical indication of the state of biological life in a stream that takes into account the sensitivity of the taxa present to organic pollution in stony habitats.
Mixing zone	The zone below a discharge point where the discharge is not fully mixed with the receiving environment. For a stream, conventionally taken as a length equivalent to 7 times the width of the stream at the discharge point.
MPN	Most Probable Number. A method used to estimate the concentration of viable microorganisms in a sample.
µS/cm	Microsiemens per centimetre.
NH ₄	Ammonium, normally expressed in terms of the mass of nitrogen (N).
NH ₃	Unionised ammonia, normally expressed in terms of the mass of nitrogen (N).
NO ₃	Nitrate, normally expressed in terms of the mass of nitrogen (N).
NTU	Nephelometric Turbidity Unit, a measure of the turbidity of water.
O&G	Oil and grease, defined as anything that will dissolve into a particular organic solvent (e.g. hexane). May include both animal material (fats) and mineral matter (hydrocarbons).
Pb*	Lead.
pH	A numerical system for measuring acidity in solutions, with 7 as neutral. Numbers lower than 7 are increasingly acidic and higher than 7 are increasingly alkaline. The scale is logarithmic i.e. a change of 1 represents a ten-fold change in strength. For example, a pH of 4 is ten times more acidic than a pH of 5.
Physicochemical	Measurement of both physical properties (e.g. temperature, clarity, density) and chemical determinants (e.g. metals and nutrients) to characterise the state of an environment.
PM ₁₀ , PM _{2.5} , PM _{1.0}	Relatively fine airborne particles (less than 10 or 2.5 or 1.0 micrometre diameter, respectively).
Resource consent	Refer Section 87 of the RMA. Resource consents include land use consents (refer Sections 9 and 13 of the RMA), coastal permits (Sections 12, 14 and 15), water permits (Section 14) and discharge permits (Section 15).
RMA	<i>Resource Management Act 1991</i> and including all subsequent amendments.
SS	Suspended solids.
SQMCI	Semi quantitative macroinvertebrate community index.
Temp	Temperature, measured in °C (degrees Celsius).
Turb	Turbidity, expressed in NTU or FNU.
Zn*	Zinc.

*an abbreviation for a metal or other analyte may be followed by the letters 'As', to denote the amount of metal recoverable in acidic conditions. This is taken as indicating the total amount of metal that might be solubilised under extreme environmental conditions. The abbreviation may alternatively be followed by the letter 'D', denoting the amount of the metal present in dissolved form rather than in particulate or solid form.

For further information on analytical methods, contact a Science Services Manager.

Bibliography and references

Of previous monitoring reports and any other relevant documents

- Taranaki Regional Council 2020: RKM Farms Ltd (Piggery) Monitoring Programme Annual Report 2019-2012. Technical Report 2020-48.
- Taranaki Regional Council 2019: RKM Farms Ltd (Piggery) Monitoring Programme Annual Report 2018-2019. Technical Report 2019-28.
- Taranaki Regional Council 2018: RKM Farms Ltd (Piggery) Monitoring Programme Annual Report 2017-2018. Technical Report 2018-19.
- Taranaki Regional Council 2017: RKM Farms Ltd (Piggery) Monitoring Programme Annual Report 2016-2017. Technical Report 2017-62.
- Taranaki Regional Council 2016: RKM Farms Ltd (Piggery) Monitoring Programme Annual Report 2015-2016. Technical Report 2016-94.
- Taranaki Regional Council 2015: RKM Farms Ltd (Piggery) Monitoring Programme Annual Report 2014-2015. Technical Report 2015-20.
- Taranaki Regional Council 2014: RKM Farms Ltd (Piggery) Monitoring Programme Annual Report 2013-2014. Technical Report 2014-19.
- Taranaki Regional Council 2013: GD & J Harvie Piggery Monitoring Programme Annual Report 2012-2013. Technical Report 2013-02.
- Taranaki Regional Council 2012: GD & J Harvie Piggery Monitoring Programme Annual Report 2011-2012. Technical Report 2012-25.
- Taranaki Regional Council 2011: GD & J Harvie Piggery Monitoring Programme Annual Report 2010-2011. Technical Report 2011-05.

Appendix I

Resource consents held by RKM Farms Ltd

(For a copy of the signed resource consent
please contact the TRC Consents department)

Water abstraction permits

Section 14 of the RMA stipulates that no person may take, use, dam or divert any water, unless the activity is expressly allowed for by a resource consent or a rule in a regional plan, or it falls within some particular categories set out in Section 14. Permits authorising the abstraction of water are issued by the Council under Section 87(d) of the RMA.

Water discharge permits

Section 15(1)(a) of the RMA stipulates that no person may discharge any contaminant into water, unless the activity is expressly allowed for by a resource consent or a rule in a regional plan, or by national regulations. Permits authorising discharges to water are issued by the Council under Section 87(e) of the RMA.

Air discharge permits

Section 15(1)(c) of the RMA stipulates that no person may discharge any contaminant from any industrial or trade premises into air, unless the activity is expressly allowed for by a resource consent, a rule in a regional plan, or by national regulations. Permits authorising discharges to air are issued by the Council under Section 87(e) of the RMA.

Discharges of wastes to land

Sections 15(1)(b) and (d) of the RMA stipulate that no person may discharge any contaminant onto land if it may then enter water, or from any industrial or trade premises onto land under any circumstances, unless the activity is expressly allowed for by a resource consent, a rule in a regional plan, or by national regulations. Permits authorising the discharge of wastes to land are issued by the Council under Section 87(e) of the RMA.

Land use permits

Section 13(1)(a) of the RMA stipulates that no person may in relation to the bed of any lake or river use, erect, reconstruct, place, alter, extend, remove, or demolish any structure or part of any structure in, on, under, or over the bed, unless the activity is expressly allowed for by a resource consent, a rule in a regional plan, or by national regulations. Land use permits are issued by the Council under Section 87(a) of the RMA.

Coastal permits

Section 12(1)(b) of the RMA stipulates that no person may erect, reconstruct, place, alter, extend, remove, or demolish any structure that is fixed in, on, under, or over any foreshore or seabed, unless the activity is expressly allowed for by a resource consent, a rule in a regional plan, or by national regulations. Coastal permits are issued by the Council under Section 87(c) of the RMA.

Discharge Permit
Pursuant to the Resource Management Act 1991
a resource consent is hereby granted by the
Taranaki Regional Council

Name of
Consent Holder: Gary David Naismith Harvie
599A South Road
R D 12
HAWERA 4672

Decision Date: 9 August 2010

Commencement
Date: 9 August 2010

Conditions of Consent

Consent Granted: To discharge treated piggery effluent from an anaerobic and twin aerobic pond treatment system, followed by a tertiary treatment system, into the Tawhiti Stream in the Tangahoe catchment at or about (NZTM) 1715327E-5614198N

Expiry Date: 1 June 2028

Review Date(s): June 2012, June 2014, June 2016, June 2022

Site Location: 599A South Road, Hawera

Legal Description: Pt Lot 3 DP 3116

Catchment: Tangahoe

Tributary: Tawhiti

*For General, Standard and Special conditions
pertaining to this consent please see reverse side of this document*

General condition

- a. The consent holder shall pay to the Taranaki Regional Council [the Council] all the administration, monitoring and supervision costs of this consent, fixed in accordance to section 36 of the Resource Management Act.

Special conditions

Information to be submitted

1. The consent holder shall prepare a Site Layout Plan [drawing] which clearly shows the entire wastewater network system including the location and extent of the following:
 - The drainage system [e.g. swales] within the piggery sheds which the wastewater generated drains to;
 - The collection areas [e.g. sumps] for the wastewater prior to it being pumped to the pond treatment system;
 - The pipe network between the collection areas and pond treatment system;
 - The pond treatment system including the location of the pipe network between the ponds; and
 - Any other details which would assist in showing how the wastewater is conveyed from the piggery sheds to the wastewater treatment system.

The Plan shall be submitted to the Chief Executive, Taranaki Regional Council, within two months of the commencement date of this consent.

Wastewater discharge

2. The consent holder shall at all times adopt the best practicable option, as defined in section 2 of the Resource Management Act 1991, to prevent or minimise any adverse effects on the environment from the exercise of this consent.
3. The number of pigs [equivalent 50 kg per pig] on the property at any one time shall not exceed 3636 pig equivalents.
4. After a mixing zone of 30 metres downstream of the point where the discharge enters the Tawhiti Stream, the discharge shall not, either by itself or in combination with other discharges, give rise to any or all of the following adverse effects in the Tawhiti Stream:
 - a) filtered carbonaceous biochemical oxygen demand must not exceed 2.00 gm^{-3} ;
 - b) a level of unionised ammonia greater than 0.025 gm^{-3} ;
 - c) the production of any conspicuous oil or grease films, scums or foams, or floatable or suspended materials;
 - d) any conspicuous change in the colour or visual clarity;
 - e) any emission of objectionable odour;
 - f) the rendering of fresh water unsuitable for consumption by farm animals; and
 - g) any significant adverse effects on aquatic life.

Consent 5108-2

5. In accordance with section 128 and 129 of the Resource Management Act 1991, the Taranaki Regional Council may serve notice of its intention to review, amend, delete or add to the conditions of this resource consent by giving notice of review during the month of June in any of the following years: 2012, 2014, 2016, 2022; for any of the following purposes:
- a) Ensuring that the conditions are adequate to deal with any adverse effects on the environment arising from the exercise of this resource consent, and in particular to address any more than minor adverse effects relating to the discharge of wastewater; and/or
 - b) To determine any measures that may be appropriate to comply with condition 2 of this consent, and which are necessary to address any adverse effects of the discharge of wastewater from the site; and/or
 - c) To address any apparent deficiencies in the design of the pond treatment system.

Signed at Stratford on 9 August 2010

For and on behalf of
Taranaki Regional Council

Director-Resource Management

Discharge Permit
Pursuant to the Resource Management Act 1991
a resource consent is hereby granted by the
Taranaki Regional Council

Name of
Consent Holder: RKM Farms Limited
599B South Road
R D 12
HAWERA 4672

Decision Date: 9 August 2010

Commencement Date: 9 August 2010

Conditions of Consent

Consent Granted: To discharge treated piggery effluent from an anaerobic and twin aerobic pond treatment system, followed by a tertiary treatment system, into the Tawhiti Stream

Expiry Date: 1 June 2028

Review Date(s): June 2012, June 2014, June 2016, June 2022

Site Location: 599A South Road, Hawera

Legal Description: Pt Lot 3 DP 3116

Grid Reference (NZTM) 1715327E-5614198N

Catchment: Tangahoe

Tributary: Tawhiti

*For General, Standard and Special conditions
pertaining to this consent please see reverse side of this document*

General condition

- a. The consent holder shall pay to the Taranaki Regional Council [the Council] all the administration, monitoring and supervision costs of this consent, fixed in accordance with section 36 of the Resource Management Act.

Special conditions

Information to be submitted

1. The consent holder shall prepare a Site Layout Plan [drawing] which clearly shows the entire wastewater network system including the location and extent of the following:
 - The drainage system [e.g. swales] within the piggery sheds which the wastewater generated drains to;
 - The collection areas [e.g. sumps] for the wastewater prior to it being pumped to the pond treatment system;
 - The pipe network between the collection areas and pond treatment system;
 - The pond treatment system including the location of the pipe network between the ponds; and
 - Any other details which would assist in showing how the wastewater is conveyed from the piggery sheds to the wastewater treatment system.

The Plan shall be submitted to the Chief Executive, Taranaki Regional Council, within two months of the commencement date of this consent.

Wastewater discharge

2. The consent holder shall at all times adopt the best practicable option, as defined in section 2 of the Resource Management Act 1991, to prevent or minimise any adverse effects on the environment from the exercise of this consent.
3. The number of pigs [equivalent 50 kg per pig] on the property at any one time shall not exceed 3636 pig equivalents.
4. After a mixing zone of 30 metres downstream of the point where the discharge enters the Tawhiti Stream, the discharge shall not, either by itself or in combination with other discharges, give rise to any or all of the following adverse effects in the Tawhiti Stream:
 - a) filtered carbonaceous biochemical oxygen demand must not exceed 2.00 gm⁻³;
 - b) a level of unionised ammonia greater than 0.025 gm⁻³;
 - c) the production of any conspicuous oil or grease films, scums or foams, or floatable or suspended materials;
 - d) any conspicuous change in the colour or visual clarity;
 - e) any emission of objectionable odour;
 - f) the rendering of fresh water unsuitable for consumption by farm animals; and
 - g) any significant adverse effects on aquatic life.

Consent 5108-2

5. In accordance with section 128 and 129 of the Resource Management Act 1991, the Taranaki Regional Council may serve notice of its intention to review, amend, delete or add to the conditions of this resource consent by giving notice of review during the month of June in any of the following years: 2012, 2014, 2016, 2022; for any of the following purposes:
- a) Ensuring that the conditions are adequate to deal with any adverse effects on the environment arising from the exercise of this resource consent, and in particular to address any more than minor adverse effects relating to the discharge of wastewater; and/or
 - b) To determine any measures that may be appropriate to comply with condition 2 of this consent, and which are necessary to address any adverse effects of the discharge of wastewater from the site; and/or
 - c) To address any apparent deficiencies in the design of the pond treatment system.

Transferred at Stratford on 01 August 2013

For and on behalf of
Taranaki Regional Council

Director-Resource Management

Discharge Permit
Pursuant to the Resource Management Act 1991
a resource consent is hereby granted by the
Taranaki Regional Council

Name of
Consent Holder: RKM Farms Limited
599B South Road
RD 12
Hawera 4672

Decision Date: 16 May 2017

Commencement Date: 16 May 2017

Conditions of Consent

Consent Granted: To discharge emissions into the air from a pig farming operation and associated practices including effluent treatment

Expiry Date: 1 June 2028

Review Date(s): June 2022

Site Location: 599B South Road, Hawera

Grid Reference (NZTM) 1714646E-5614435N

*For General, Standard and Special conditions
pertaining to this consent please see reverse side of this document*

General condition

- a. The consent holder shall pay to the Taranaki Regional Council all the administration, monitoring and supervision costs of this consent, fixed in accordance with section 36 of the Resource Management Act 1991.

Special conditions

1. The number of pigs (equivalent 50 kg per pig) on the property at any one time shall not exceed 3636 pig equivalents.
2. The consent holder shall at all times adopt the best practicable option, as defined in section 2 of the Resource Management Act 1991, to prevent or minimise any actual or likely adverse effect on the environment associated with the discharge of contaminants from the site.
3. Prior to undertaking any alterations to the piggery unit's processes, operations, equipment or layout, which may significantly change the nature or quantity of contaminants emitted from the site, the consent holder shall consult with the Chief Executive, Taranaki Regional Council, and shall obtain any necessary approvals under the Resource Management Act 1991 and its amendments.
4. The consent holder shall minimise the emissions and impacts of contaminants discharged into air from the site by:
 - (a) the selection of the most appropriate process equipment;
 - (b) process control equipment and emission control equipment;
 - (c) the methods of control;
 - (d) the proper and effective operation, supervision, maintenance and control of all equipment and processes; and
 - (e) the proper care of all pigs on the site.
5. The discharges authorised by this consent shall not give rise to an odour at or beyond the property boundary that is offensive or objectionable.
6. In accordance with section 128 and section 129 of the Resource Management Act 1991, the Taranaki Regional Council may serve notice of its intention to review, amend, delete or add to the conditions of this resource consent by giving notice of review during the month of June 2022, for the purpose of ensuring that the conditions are adequate to deal with any adverse effects on the environment arising from the exercise of this resource consent, which were either not foreseen at the time the application was considered or which it was not appropriate to deal with at the time.

Signed at Stratford on 16 May 2017

For and on behalf of
Taranaki Regional Council

A D McLay
Director - Resource Management

Discharge Permit
Pursuant to the Resource Management Act 1991
a resource consent is hereby granted by the
Taranaki Regional Council

Name of
Consent Holder: Lloyd Gernhoefer Contractor Limited
P O Box 31
ELTHAM

Consent Granted
Date: 18 March 2008

Conditions of Consent

Consent Granted: To empty farm dairy oxidation ponds or paddock ponds by
irrigation of effluent onto and into land in the Taranaki
region

Expiry Date: 1 December 2026

Review Date(s): June 2014, June 2020

Site Location: Various locations throughout Taranaki region

Legal Description: Various

Catchment: Various

Consent 5352-2

General conditions

- a) On receipt of a requirement from the Chief Executive, Taranaki Regional Council the consent holder shall, within the time specified in the requirement, supply the information required relating to the exercise of this consent.
- b) Unless it is otherwise specified in the conditions of this consent, compliance with any monitoring requirement imposed by this consent must be at the consent holder's own expense.
- c) The consent holder shall pay to the Council all required administrative charges fixed by the Council pursuant to section 36 in relation to:
 - i) the administration, monitoring and supervision of this consent; and
 - ii) charges authorised by regulations.

Special conditions

1. Effluent removed from any particular pond system shall be sprayed onto the property from which it was derived.
2. Equipment used for the purpose of this consent shall be cleaned, on completion of each operation, upon the farm property used for the discharge of that effluent.
3. The removal operation shall be performed in such a manner as to ensure that a minimum of one-third of the total volume of wastes shall be retained within the anaerobic pond following the operation.
4. The discharge shall not result or be likely to result in any discharge of effluent to surface water.
5. The discharge shall not result in ponding on the surface that remains for more than three hours after the discharge has ceased.
6. No contaminants shall be discharged within 150 metres of any dwelling, unless the written approval of the occupier has been obtained to allow the discharge at a closer distance.
7. No contaminants shall be discharged within 50 metres of any bore, well or spring used for water supply purposes, nor within 25 metres of any surface water body.
8. The application rate shall not exceed 200 kg nitrogen/hectare/year.
9. The exercise of this consent shall not cause the emission of objectionable odours, in the opinion of at least one enforcement officer, at or beyond the boundary of the property on which the discharge occurs.
10. The consent holder shall maintain records of cleaning and spraying operations carried out pursuant to this consent, and shall make these available to the Chief Executive, Taranaki Regional Council, upon request.

Consent 5352-2

11. Where, for any cause [accidental or otherwise], effluent associated with the consent holder's operations escapes to surface water, the consent holder shall:
 - (a) immediately notify the Taranaki Regional Council and stop the discharge; and
 - (b) immediately take steps to control and stop the escape of effluent to surface water; and
 - (c) immediately take steps to ensure that a recurrence of the escape of effluent to surface water is prevented; and
 - (d) report in writing to the Chief Executive, Taranaki Regional Council, describing the manner and cause of the escape and the steps taken to control it and to prevent such a recurrence; such report to be in the hands of the Chief Executive within seven [7] days of the occurrence.

12. The Taranaki Regional Council may review any or all of the conditions of this consent by giving notice of review during June 2014 and/or June 2020, for the purpose of ensuring that the conditions are adequate to deal with any significant adverse effects on the environment arising from the exercise of this consent, which either were not foreseen at the time the application was considered or which it was not appropriate to deal with at the time.

Signed at Stratford on 18 March 2008

For and on behalf of
Taranaki Regional Council

Director-Resource Management

