

Lower Waiwhakaiho  
Air Discharges  
Compliance Monitoring Programme  
Annual Report  
2017-2018

Technical Report 2018-87

ISSN: 1178-1467 (Online)

Document: 2168109 (Word)

Document: 2178063 (Pdf)

Taranaki Regional Council

Private Bag 713

STRATFORD

March 2019



## Executive summary

The Lower Waiwhakaiho area of New Plymouth accommodates several industries that include three abrasive blasting operations, a fertiliser storage and distribution depot, and an asphalt plant. The companies hold resource consents to allow them to discharge emissions into the air. This report for the period July 2017 to June 2018 describes the monitoring programme implemented by the Taranaki Regional Council (the Council) to assess the companies' environmental performance during the period under review, and the results and environmental effects of the companies' activities in relation to emissions to the air.

The companies monitored during the period under review were Downer EDI Works Ltd, Fitzroy Engineering Group Ltd, Katere Surface Coatings Ltd, Intergroup Ltd, and Ravensdown Fertiliser Co-op Ltd.

The companies hold five resource consents, which include a total of 102 special conditions setting out the requirements that the companies must satisfy.

The Council's monitoring during the year under review included 15 inspections and two deposition gauge surveys.

**Overall, the companies assessed in this Lower Waiwhakaiho Air Discharge Compliance Monitoring Programme demonstrated a good level of environmental performance.**

The deposition gauge surveys found that, in relation to dust resulting in deposited particulates, ambient air quality in the area during the year under review was good. During the 2017-2018 monitoring year there were three gauging locations, one in the vicinity of each of Fitzroy Engineering Group Ltd, Katere Surface Coatings Ltd and Downer EDI Works Ltd sites, where the guideline was exceeded at the time of both surveys. Fitzroy Engineering exceeded three of the 12 samples collected, while Downer EDI exceeded two of the 10 samples collected. Ravensdown did not exceed any of the of the six samples collected, while Katere Surface Coatings exceeded one out of four samples collected. The highest result during the year under review was obtained by one of the Fitzroy Engineering Group Ltd gauges, which was more than twice the guideline rate. However it could not be determined if the results originated from the activities at the consent holder's site or from the neighbouring properties. The guideline reflects a deposition rate that may cause complaints in a residential area.

In the 2017-2018 year there were no confirmed unauthorised incidents related to discharges from any of the air discharge consent holders in the Lower Waiwhakaiho area.

During the year, Downer EDI Works Ltd demonstrated a high level of environmental and administrative performance with their resource consent. Overall, the site was found to be well maintained.

During the year, Fitzroy Engineering Group Ltd demonstrated a good level of environmental and high administrative performance. A few exceedances in deposition gauge results were recorded, but these were not directly attributed to Fitzroy Engineering. An abatement notice was issued for a spill of garnet to stormwater. The issue was resolved and the likely environmental effect was considered to be low to negligible.

During the year, Katere Surface Coatings Ltd demonstrated a high level of environmental performance and a high level of administrative compliance with their resource consent. Overall, the site was found to be well maintained.

During the year, Ravensdown Fertiliser Co-op Ltd demonstrated a high level of environmental and administrative performance and compliance with their air discharge consent.

During the year, Intergroup Ltd demonstrated a high level of environmental and administrative compliance with the resource consent.

For reference, in the 2017-2018 year, consent holders were found to achieve a high level of environmental performance and compliance for 76% of the consents monitored through the Taranaki tailored monitoring programmes, while for another 20% of the consents, a good level of environmental performance and compliance was achieved.

This report includes recommendations relating to monitoring in the 2018-2019 year.

## Table of contents

		Page
1	Introduction	1
1.1	Compliance monitoring programme reports and the Resource Management Act 1991	1
1.1.1	Introduction	1
1.1.2	Structure of this report	1
1.1.3	The Resource Management Act 1991 and monitoring	2
1.1.4	Investigations, interventions, and incidents	2
1.1.5	Evaluation of environmental and administrative performance	3
1.2	Resource consents	4
1.2.1	Air discharge permits	4
1.3	Monitoring programme	5
1.3.1	Introduction	5
1.3.2	Programme liaison and management	5
1.3.3	Site inspections	5
1.3.4	Particulate deposition monitoring	7
2	Downer EDI Works Ltd	8
2.1	Introduction	8
2.1.1	Process description	8
2.1.2	Air discharge permit	10
2.2	Results	10
2.2.1	Inspections	10
2.2.2	Results of receiving environment monitoring	11
2.2.3	Investigations, interventions, and incidents	12
2.3	Discussion	12
2.3.1	Discussion of site performance	12
2.3.2	Environmental effects of exercise of consents	12
2.3.3	Evaluation of performance	13
2.3.4	Recommendations from the 2016-2017 Annual Report	15
2.3.5	Alterations to monitoring programmes for 2018-2019	15
2.4	Recommendation	16
3	Fitzroy Engineering Group Ltd	17
3.1	Introduction	17
3.1.1	Process description	17

	3.1.2	Air discharge permit	19
3.2		Results	20
	3.2.1	Inspections	20
	3.2.2	Provision of company data	21
	3.2.3	Results of receiving environment monitoring	21
	3.2.4	Investigations, interventions, and incidents	22
3.3		Discussion	23
	3.3.1	Discussion of site performance	23
	3.3.2	Environmental effects of exercise of consent	23
	3.3.3	Evaluation of performance	24
	3.3.4	Recommendations from the 2016-2017 Annual Report	27
	3.3.5	Alterations to monitoring programmes for 2018-2019	27
3.4		Recommendation	27
4		Katere Surface Coatings Ltd	28
4.1		Introduction	28
	4.1.1	Process description	28
	4.1.2	Air discharge permits	28
4.2		Results	29
	4.2.1	Inspections	29
	4.2.2	Results of receiving environment monitoring	30
	4.2.3	Investigations, interventions, and incidents	31
4.3		Discussion	31
	4.3.1	Discussion of site performance	31
	4.3.2	Environmental effects of exercise of consents	31
	4.3.3	Evaluation of performance	32
	4.3.4	Recommendations from the 2016-2017 Annual Report	34
	4.3.5	Alterations to monitoring programmes for 2018-2019	34
4.4		Recommendation	35
5		Ravensdown Fertiliser Co-operative Ltd	36
5.1		Introduction	36
	5.1.1	Process description	36
	5.1.2	Air discharge permit	37
5.2		Results	38
	5.2.1	Inspections	38

5.2.2	Results of receiving environment monitoring	38
5.2.3	Investigations, interventions, and incidents	39
5.3	Discussion	39
5.3.1	Discussion of site performance	39
5.3.2	Environmental effects of exercise of consents	39
5.3.3	Evaluation of performance	40
5.3.4	Recommendations from the 2016-2017 Annual Report	41
5.3.5	Alterations to monitoring programmes for 2018-2019	41
5.3.6	Recommendation	42
6	Intergroup Ltd	43
6.1	Introduction	43
6.1.1	Process description	43
6.1.2	Air discharge permit	44
6.2	Results	45
6.2.1	Inspections	45
6.2.2	Investigations, interventions, and incidents	45
6.3	Discussion	45
6.3.1	Discussion of site performance	45
6.3.2	Environmental effects of exercise of consent	45
6.3.3	Evaluation of performance	46
6.3.4	Recommendations from the 2016-2017 Annual Report	47
6.3.5	Alterations to monitoring programmes for 2018-2019	47
6.4	Recommendation	48
7	Lower Waiwhakaiho area performance	49
7.1	Air related incidents	49
7.2	Deposition gauging	49
7.2.1	Results of deposition gauging	49
7.3	Discussion	51
7.3.1	Environmental effects of exercise of air discharge permits	51
8	Summary of recommendations	52
	Glossary of common terms and abbreviations	53
	Bibliography and references	54
Appendix I	Resource consents for discharges to air held by industries in the Lower Waiwhakaiho area (alphabetical order)	

Appendix II Wind direction information for the New Plymouth area during the deposition gauge monitoring periods

## List of tables

Table 1	Resource consents for the monitored industries in the Lower Waiwhakaiho area	4
Table 2	Downer EDI Works Ltd air monitoring site locations	11
Table 3	Deposition gauge results from around the Downer EDI Works Ltd site	12
Table 4	Summary of performance for Consent 4060-4, Downer EDI Works Ltd discharge of emissions to air	13
Table 5	Deposition gauge results from around the Fitzroy Engineering Group Ltd site	22
Table 6	Summary of performance for Consent 4025-3, Fitzroy Engineering Group Ltd discharge of emissions to air	24
Table 7	Deposition gauge results from around the Katere Surface Coating Ltd site	31
Table 8	Summary of performance for Consent 4475-2, Katere Surface Coatings Ltd discharge of emissions to air	33
Table 9	Description of Ravensdown deposition gauge sample sites	38
Table 10	Deposition gauge results from around the Ravensdown site	39
Table 11	Summary of performance for Consent 4024-3, Ravensdown Fertiliser Co-operative Ltd discharge of emissions to air	40
Table 12	Summary of performance for consent 7468-1, Intergroup Ltd's discharge of emissions to air	46

## List of figures

Figure 1	Location of industries holding air discharge permits, regional landfill and monitoring sites within the Lower Waiwhakaiho area	6
Figure 2	Location of Downer EDI Works Ltd and related deposition gauge sites	9
Figure 3	Deposition gauge results at Downer EDI Works monitoring sites (July 2013 – July 2018)	13
Figure 4	Fitzroy Engineering Group Ltd site and deposition gauge locations	19
Figure 5	Deposition gauge results for the Fitzroy Engineering monitoring sites from July 2013 to July 2018	24
Figure 6	Location of Katere Surface Coatings Ltd and their deposition gauge sites	28
Figure 7	Deposition gauge results for the Katere Surface Coatings monitoring sites from July 2013 to July 2018	32
Figure 8	Ravensdown Fertiliser Co-operative Ltd site and deposition gauge locations	37
Figure 9	Deposition gauge results for the three Ravensdown monitoring sites from July 2013 to July 2018	40
Figure 10	Location of Intergroup Ltd blasting facilities at Colson Road	44



Figure 11	Dust deposition for the Lower Waiwhakaiho area in the 2017-2018 monitoring period	50
-----------	---	----

## List of photos

Photo 1	Examples of a deposition gauge set up and recovered filter pads	7
Photo 2	Blastquip fabric filter air treatment system at Fitzroy Engineering	18
Photo 3	Site photos from Intergroup Ltd showing the blasting shed and key process equipment	43



# 1 Introduction

## 1.1 Compliance monitoring programme reports and the Resource Management Act 1991

### 1.1.1 Introduction

This report is the Annual Report for the period July 2017 to June 2018 by the Taranaki Regional Council (the Council) describing the results of the monitoring programme associated with the air discharge permits held by five industries in the Lower Waiwhakaiho area. The monitoring covers emissions to air from the companies' activities in the Fitzroy area of New Plymouth.

Since 1 October 1991, with the enactment of the *Resource Management Act 1991* (RMA), the Council has been the agency with primary responsibility for air quality management in the Taranaki region. Early in 1992, the Council initiated air quality monitoring programmes for industries holding discharge permits, and has subsequently issued and monitored air discharge permits for a number of other industrial and trade premises.

The Council began monitoring some of the industries in the Lower Waiwhakaiho area in 1992. This report is the 25<sup>th</sup> Annual Report to be prepared by the Council to cover the companies' air discharges and their effects. It is the 17<sup>th</sup> Annual Report to deal with emissions in the area as a combined monitoring report.

A separate report covers the results and findings of the Council's monitoring programmes associated with the water discharge permits held by some of these companies<sup>1</sup>.

### 1.1.2 Structure of this report

Section 1 of this report is a background section. It sets out general information about:

- Consent compliance monitoring under the RMA and the Council's obligations;
- The Council's approach to monitoring sites through annual programmes;
- The resource consents held by companies in the Lower Waiwhakaiho area; and
- The nature of the monitoring programme in place for the period under review.

Each company's activity is then discussed in a separate section (Sections 2 to 7).

In the subsections for each company (e.g. Section 2.1) there is a general description of the industrial activity and its discharges, an aerial photograph or map showing the location of the activity, and an outline of the matters covered by the company's air discharge permit.

Subsection 2 presents the results of monitoring of the companies activities during the period under review, including scientific and technical data.

Subsection 3 discusses the results, their interpretation, and their significance for the environment in the immediate vicinity of the site under discussion.

Subsection 4 presents recommendations to be implemented in the 2018-2019 monitoring year.

---

<sup>1</sup> Lower Waiwhakaiho Catchment Monitoring Programme Annual Report, 2017-2018

Section 8 presents the results and findings in relation to any investigations, interventions, and incidents relevant to the Lower Waiwhakaiho area and discusses the deposition gauge results, their interpretation, and their significance for the environment in the Lower Waiwhakaiho area as a whole.

Section 9 presents a summary of recommendations made in relation to the monitoring of each company's activities.

A glossary of common abbreviations and scientific terms, and a bibliography, are presented at the end of the report.

### 1.1.3 The Resource Management Act 1991 and monitoring

The RMA primarily addresses environmental 'effects' which are defined as positive or adverse, temporary or permanent, past, present or future, or cumulative. Effects may arise in relation to:

- a. the neighbourhood or the wider community around an activity, and may include cultural and social-economic effects;
- b. physical effects on the locality, including landscape, amenity and visual effects;
- c. ecosystems, including effects on plants, animals, or habitats, whether aquatic or terrestrial;
- d. natural and physical resources having special significance (for example recreational, cultural, or aesthetic);
- e. risks to the neighbourhood or environment.

In drafting and reviewing conditions on discharge permits, and in implementing monitoring programmes, the Council is recognising the comprehensive meaning of 'effects' inasmuch as is appropriate for each activity. Monitoring programmes are not only based on existing permit conditions, but also on the obligations of the RMA to assess the effects of the exercise of consents. In accordance with Section 35 of the RMA, the Council undertakes compliance monitoring for consents and rules in regional plans, and maintains an overview of the performance of resource users and consent holders. Compliance monitoring, including both activity and impact monitoring, enables the Council to continually re-evaluate its approach and that of consent holders to resource management and, ultimately, through the refinement of methods and considered responsible resource utilisation, to move closer to achieving sustainable development of the region's resources.

### 1.1.4 Investigations, interventions, and incidents

The monitoring programme for the year was based on what was considered to be an appropriate level of monitoring, review of data, and liaison with the consent holder. During the year matters may arise which require additional activity by the Council, for example provision of advice and information, or investigation of potential or actual courses of non-compliance or failure to maintain good practices. A pro-active approach that in the first instance avoids issues occurring is favoured.

The Council operates and maintains a register of all complaints or reported and discovered excursions from acceptable limits and practices, including non-compliance with consents, which may damage the environment. The incident register includes events where the company concerned has itself notified the Council. The register contains details of any investigation and corrective action taken.

Complaints may be alleged to be associated with a particular site. If there is potentially an issue of legal liability, the Council must be able to prove by investigation that the identified company is indeed the source of the incident (or that the allegation cannot be proven).

### 1.1.5 Evaluation of environmental and administrative performance

Besides discussing the various details of the performance and extent of compliance by the consent holders during the period under review, this report also assigns a rating as to each company's environmental and administrative performance.

Environmental performance is concerned with actual or likely effects on the receiving environment from the activities during the monitoring year. Administrative performance is concerned with the company's approach to demonstrating consent compliance in site operations and management including the timely provision of information to Council (such as contingency plans and water take data) in accordance with consent conditions.

Events that were beyond the control of the consent holder and unforeseeable (that is a defence under the provisions of the RMA can be established) may be excluded with regard to the performance rating applied. For example loss of data due to a flood destroying deployed field equipment.

#### Environmental Performance

**High:** No or inconsequential (short-term duration, less than minor in severity) breaches of consent or regional plan parameters resulting from the activity; no adverse effects of significance noted or likely in the receiving environment. The Council did not record any verified unauthorised incidents involving significant environmental impacts and was not obliged to issue any abatement notices or infringement notices in relation to such impacts.

**Good:** Likely or actual adverse effects of activities on the receiving environment were negligible or minor at most. There were some such issues noted during monitoring, from self reports, or in response to unauthorised incident reports, but these items were not critical, and follow-up inspections showed they have been dealt with. These minor issues were resolved positively, co-operatively, and quickly. The Council was not obliged to issue any abatement notices or infringement notices in relation to the minor non-compliant effects; however abatement notices may have been issued to mitigate an identified potential for an environmental effect to occur.

For example:

- High suspended solid values recorded in discharge samples, however the discharge was to land or to receiving waters that were in high flow at the time;
- Strong odour beyond boundary but no residential properties or other recipient nearby.

**Improvement required:** Likely or actual adverse effects of activities on the receiving environment were more than minor, but not substantial. There were some issues noted during monitoring, from self reports, or in response to unauthorised incident reports. Cumulative adverse effects of a persistent minor non-compliant activity could elevate a minor issue to this level. Abatement notices and infringement notices may have been issued in respect of effects.

**Poor:** Likely or actual adverse effects of activities on the receiving environment were significant. There were some items noted during monitoring, from self reports, or in response to unauthorised incident reports. Cumulative adverse effects of a persistent moderate non-compliant activity could elevate an 'improvement required' issue to this level. Typically there were grounds for either a prosecution or an infringement notice in respect of effects.

#### Administrative performance

**High:** The administrative requirements of the resource consents were met, or any failure to do this had trivial consequences and were addressed promptly and co-operatively.

**Good:** Perhaps some administrative requirements of the resource consents were not met at a particular time, however this was addressed without repeated interventions from the Council staff. Alternatively

adequate reason was provided for matters such as the no or late provision of information, interpretation of 'best practical option' for avoiding potential effects, etc.

**Improvement required:** Repeated interventions to meet the administrative requirements of the resource consents were made by Council staff. These matters took some time to resolve, or remained unresolved at the end of the period under review. The Council may have issued an abatement notice to attain compliance.

**Poor:** Material failings to meet the administrative requirements of the resource consents. Significant intervention by the Council was required. Typically there were grounds for an infringement notice.

For reference, in the 2017-2018 year, consent holders were found to achieve a high level of environmental performance and compliance for 76% of the consents monitored through the Taranaki tailored monitoring programmes, while for another 20% of the consents, a good level of environmental performance and compliance was achieved

## 1.2 Resource consents

### 1.2.1 Air discharge permits

Section 15(1)(c) of the RMA stipulates that no person may discharge any contaminant from any industrial or trade premises into air, unless the activity is expressly allowed for by a resource consent, a rule in a regional plan, or by national regulations.

A list of the companies holding air discharge permits monitored as part of the Lower Waiwhakaiho Air Discharges Compliance Monitoring Programme is given in Table 1, and their locations are shown in Figure 1. The companies' activities and the special conditions on their consents are presented in later sections. Copies of the full consents are included (in alphabetical order) in Appendix I.

**Table 1** Resource consents for the monitored industries in the Lower Waiwhakaiho area

Consent Holder	Consent No	Description	Next Review Date	Expiry Date
Downer NZ Ltd	4060-4	To discharge emissions into the air from the manufacture of hot mix asphalt paving mixes and associated activities	-	June 2020
Fitzroy Engineering Group Ltd	4025-3	To discharge emissions into the air from abrasive blasting operations and associated activities at the Fitzroy Engineering Group Ltd factory site and from yard blasting operations and from mobile abrasive blasting at various locations throughout the Taranaki region	-	June 2020
Intergroup Ltd	7468-1	To discharge emissions to air from mobile blasting operations throughout the Taranaki region (excluding the Coastal Marine Area) and at a permanent facility	June 2018	June 2020
Katere Surface Coatings Ltd	4475-2	To discharge emissions to air from abrasive blasting and surface coating activities at a permanent site located at Katere Road, New Plymouth and from mobile operations throughout the Taranaki region including within the Coastal Marine Area at Port Taranaki	-	June 2020

Consent Holder	Consent No	Description	Next Review Date	Expiry Date
Ravensdown Ltd	4024-3	To discharge emissions into the air from the storage, blending and distribution of fertiliser	June 2020	June 2026

## 1.3 Monitoring programme

### 1.3.1 Introduction

Section 35 of the RMA sets out obligations upon the Council to gather information, monitor, and conduct research on the exercise of resource consents, and the effects arising, within the Taranaki region and report upon these.

The Council may therefore make and record measurements of physical and chemical parameters, take samples for analysis, carry out surveys and inspections, conduct investigations, and seek information from consent holders.

The air quality monitoring programme for the industries in the Lower Waiwhakaiho area consisted of up to three primary components.

### 1.3.2 Programme liaison and management

There is generally a significant investment of time and resources by the Council in:

- ongoing liaison with resource consent holders over consent conditions and their interpretation and application;
- in discussion over monitoring requirements;
- preparation for any reviews;
- renewals;
- new consents;
- advice on the Council's environmental management strategies and content of regional plans and;
- consultation on associated matters.

### 1.3.3 Site inspections

Each site was visited up to three times during the monitoring period. Inspections focused on plant processes with associated actual and potential emission sources and characteristics, including potential odour, dust, noxious or offensive emissions. Sources of data being collected by the consent holder were identified and accessed, so that performance in respect of operation, internal monitoring, and supervision could be reviewed by the Council. The neighbourhood was surveyed for environmental effects.

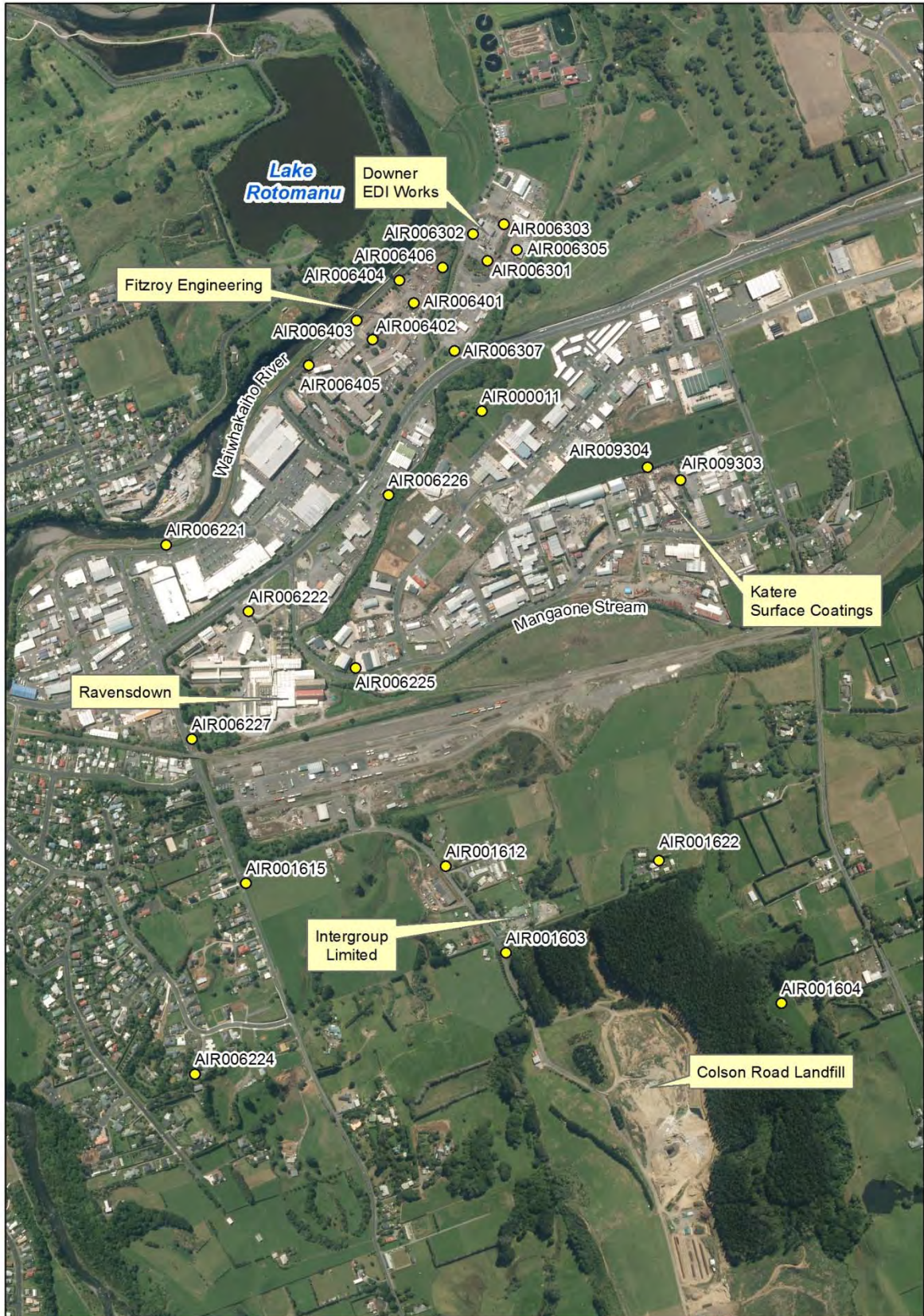


Figure 1 Location of industries holding air discharge permits, regional landfill and monitoring sites within the Lower Waiwhakaiho area



### 1.3.4 Particulate deposition monitoring

Atmospheric particulate matter can arise from a number of sources, both natural and from human activity, for example vegetation pollens, smoke and ash, sea spray, dust from soils and paved surfaces, and manufacturing processes. While extremely fine particles may remain floating in the atmosphere for weeks or months, coarser dusts may settle out within timeframes ranging from a few seconds to minutes.

The environmental effects of dusts include loss of visibility, loss of the amenity and aesthetic values of a 'clear sky', irritation to breathing, and soiling of surfaces. It has been found that background rates of dust deposition in rural areas of New Zealand are typically 0.1-1.5 g/m<sup>2</sup>/30 days, while in urban areas rates are generally higher, in the range of 0.6-3.0 g/m<sup>2</sup>/30 days. From experience, rates above 3-4 g/m<sup>2</sup>/30 days tend to lead to complaints by neighbours over the objectionable or offensive nature of dust emissions from particular sources.

Many industries emit dust from various sources during operational periods. In order to assess the effects of the emitted dust, industries have been monitored using deposition gauges. From past results of deposition gauging it is likely that factors including seasonal weather variations, vehicle traffic about the site and the type of work being conducted can have some effect on the results.



Photo 1 Examples of a deposition gauge set up and recovered filter pads

Deposition gauges are basically buckets elevated on a stand to about 1.6 m. The buckets have a solution in them to ensure that any dust that settles out of the air is not re-suspended by wind. During processing, any insects and/or vegetative matter is removed by a 150 µm filter.

As a part of the Lower Waiwhakaiho Air Discharge Compliance Monitoring Programme, deposition gauges were placed in the vicinity of selected sites on two occasions during the year, and the collected samples were analysed for deposited particulate. The monitoring locations are shown in Figure 1. The gauges were left in place for approximately three weeks, on two separate occasions.

The rate of dustfall is calculated by dividing the weight of insoluble material (grams) collected by the cross-sectional area of the gauge m<sup>2</sup> and the number of days over which the sample was taken. The units of measurement are g/m<sup>2</sup>/day.

Guideline values used by the Council for dust deposition are 4 g/m<sup>2</sup>/30 days or 0.13 g/m<sup>2</sup>/day deposited matter. Consideration is given to the location of the industry and the sensitivity of the surrounding community, when assessing results against these values. This guideline value has been incorporated as a limit in the company's consents.

## 2 Downer EDI Works Ltd

### 2.1 Introduction

#### 2.1.1 Process description

The purpose of the Downer EDI Works Ltd (Downer) plant is to produce asphalt for use on roads and driveways etc. A permanent drum mix plant has replaced the batch plant and mobile plant that were formerly in use at the site.

The asphalt production is achieved by the following processes. The plant is a parallel-flow drum mix plant consisting of a rotary drum (which is used to both dry and heat the aggregate and to mix the hot aggregate with bitumen), a dual fuel burner and integral combustion air fan, a bitumen drum injection system and expansion box. Aggregate is transferred into the rotating drum at the burner end and then travels down the slightly inclined rotating drum where products of combustion and excess air dry and heat the aggregate. The drum is fitted with flights, which achieve a lifting motion ensuring good contact between the drying gases and the aggregate. Hot liquid bitumen is injected into the drum about half way down. A steam barrier from the drying aggregate, and burner design, prevents the burner from impinging on the hot bitumen. Hot mix temperatures range from 135 °C to 170 °C depending on the blend, and mixes generally contain about 5% bitumen. The product is removed continuously by a conveyor at the end of the drum and is transferred to insulated storage bins prior to discharge into trucks.

The spraying of bitumen into the aggregate, and the steam generated by drying the aggregate removes a substantial proportion of the entrained dust. The combustion products, dust, bitumen volatiles, and pyrolysis products are drawn through an expansion box where large dust particles settle out and drop into the aggregate/bitumen mix. The emissions then pass through a venturi water scrubber, which injects water into the exhaust gas stream and centrifugally separates out the water/dust prior to discharge from the 17 m stack.

Road patching mix can be manufactured in a pugmill serviced via a by-pass conveyor.

The current drum mix plant was installed in 2006. It has a maximum production rate of 80 tonnes per hour, but is normally operated at around 50 tonnes per hour, with the typical annual operating time being around 200 to 400 hours per year.

The major components of this drum mix plant were either new or refurbished, with only items such as the aggregate storage facilities, control room and weighbridge being existing facilities. The scrubber settling ponds, although existing, were deepened to increase retention/settling time.

The drum burner for this plant operates primarily on natural gas but with dual fuel capability. The plant is able to operate on diesel oil, primarily to give some commercial advantage when negotiating fuel contracts. The burner has a rated capacity of 12 MW gross, but the plant requires only 7 MW gross on average at the plant's maximum production rate of 80 tonnes per hour.

Diesel and kerosene are not blended or stored at the site but at Port Taranaki. If diesel firing of the dual fuel drum burner was required, the consent holder advised that the existing self banded (double skinned) 10,000 litre fuel tank would be used for fuel storage.

The plant is designed to be capable of processing recycled asphalt, and Downer indicated that they may want to introduce this at a later date. However no information was provided to the Council at the time of their resource consent application regarding the potential effects from the processing of recycled asphalt paving and so it is not currently permitted by their consent.

The main potential issues associated with the discharges to air from the site are particulates, silica, organic compounds, carbon monoxide, nitrogen oxides and sulphur dioxide.

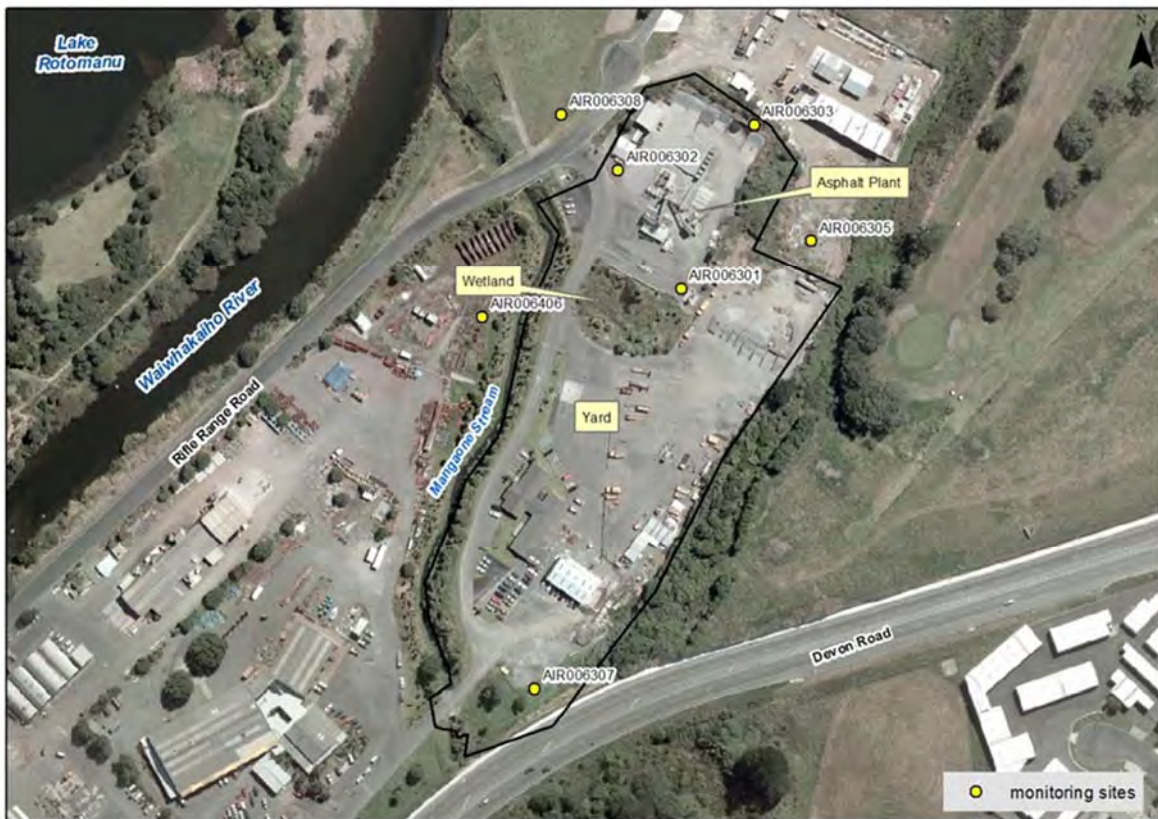


Figure 2 Location of Downer EDI Works Ltd and related deposition gauge sites

In addition to the emissions from the asphalt plant itself during normal operation, the main sources of additional particulates are:

- storage and movements of aggregate and crusher dust, the effects of which are mitigated by keeping the materials damp;
- washing out of the drum between substantially different batches of asphalt;
- run-out of aggregate loaded in excess of requirements;
- fugitive emissions, which are controlled by ensuring that adequate monitoring and maintenance is undertaken by operators at the site, and
- mobilisation of dust from the yard surface due to truck movements. The roads and yard areas have been progressively hard paved and these surfaces are kept damp when appropriate. The yard has been equipped with water sprays to assist in minimising dust during windy weather. Spillage of aggregate is scraped up and the area washed down as necessary. A speed limit of 10 km/h has been imposed to reduced dust generation from vehicle movements in dry weather.

Some of the total organic carbon (TOC) emissions can produce a noticeable odour, however it is expected that these odours would dissipate sufficiently so that they are not considered to be offensive beyond the boundary of the site. Bitumen odour can be apparent beyond the boundaries of the premises resulting from the dumping of hot mix or patching mix into waiting trucks. When the material is deposited in the truck, a moderate cloud of bitumen smoke may drift downwind. This event is of short duration.

Most of the sulphur dioxide and nitrogen oxides produced by the burning of fossil fuels in the plant are removed by the water scrubber in the cyclone.

Ground level concentrations of carbon monoxide and silica are estimated to be well below relevant guidelines.

### 2.1.2 Air discharge permit

Downer holds air discharge permit 4060 to cover emissions to air from the manufacture of hot mix asphalt paving and associated processes. This permit was originally issued by the Council on 8 February 1995 to Technic Industries Ltd as a resource consent under Section 87(e) of the RMA. This consent was renewed on 29 March 2004 and then renewed again on 23 March 2005 for a period until June 2020. Changes to consent conditions were made in June 2016.

Ownership of the plant has changed several times, with Downer (formerly operating under the names of Works Civil Construction and then Works Infrastructure Ltd) taking over the site from Technic Industries Ltd in November 1997.

The special conditions on the consent are intended to control the quality of the emissions from the site, and limit the potential for off-site effects as a result of the operation of the asphalt plant and associated activities. This is achieved by:

- Requiring that the consent holder carry out their activities in a way that is consistent with the information submitted at the time of the consent application, or seek the Council's approval before making any changes (special conditions 1 and 3).
- Ensuring that the consent holder adopts the best practicable option in preventing or minimising any adverse effects that may result from discharges to air from the site (special condition 2).
- Prohibiting the processing of recycled asphalt, as no information was provided in the AEE relating to the potential effects of discharges from this activity (special condition 4).
- Controlling the operation and maintenance of the burner (special conditions 5 to 7).
- Measurable limits on particulate and smoke discharges (special conditions 8 and 20).
- Requiring the consent holder to monitor and report on the particulates in the emissions from the discharge stack at the request of a potentially affected party (special conditions 9 and 10).
- Limiting off site effects in relation to dust, odour, and gaseous contaminants (special conditions 11 to 17).
- Requiring that dust mitigation measures are in place to control potential dust emissions from associated activities (special conditions 18 and 19).
- Requiring that the consent holder operates, monitors, and maintains systems related to emission abatement equipment to ensure optimum performance, and keeps a log, accessible to the Council, detailing the checks and maintenance carried out (special conditions 21 to 25).

This summary of consent conditions may not reflect the full requirements of each condition. The consent conditions in full can be found in the resource consent(s) which is/are appended to this report.

## 2.2 Results

### 2.2.1 Inspections

Two inspections were carried out in the 2017-2018 period; these were conducted on the 21 February 2018 and 22 June 2018. No stack testing was undertaken for this monitoring period, as per the new consent conditions. Results from the inspections are below.

## 21 February 2018

An inspection was undertaken in fine weather conditions. The asphalt plant was operating at the time of inspection, and there was no odour beyond the boundary of the property.

Particle sampling showed compliance at the time of inspection, however it was recommended that consideration be given to improvements to the wastewater discharge system. The yard and working areas were clean and well maintained, with records kept as required.

The site was tidy and compliant with resource consent conditions at the time of inspection.

## 22 June 2018

An inspection of the yard and plant was carried out in fine weather with a light northerly wind. The plant was not operating at the time. The yard and storage areas were very tidy with stormwater drains clean and filter socks in place. No stormwater was discharging at the time of inspection. Air particulate sampling showed compliance with consent limits.

## 2.2.2 Results of receiving environment monitoring

### 2.2.2.1 Deposition gauging

Deposition gauges were deployed on two occasions during the monitoring period. The first deployment began in January and lasted 20 days. The second deployment began in February and lasted 20 days.

A site map marking the location of the gauges around the Downer site is shown in Figure 2, with the monitoring site locations also described in Table 2.

Material from the gauges was analysed for solid particulates with the results shown in Table 3. The prevailing wind directions during the surveys are shown in Appendix II.

**Table 2 Downer EDI Works Ltd air monitoring site locations**

Site code	Location description	At or beyond site boundary
AIR006301	Approx. 80 m SE of asphalt plant	Inside boundary
AIR006302	NW of asphalt plant approx. 10 m from Rifle Range Road	Inside boundary
AIR006303	NE of asphalt plant approx. 50 m along screening bank	Inside boundary
AIR006305	East. Near golf course track	Outside boundary
AIR006307	Between southern site entrance and Devon Road	Inside boundary

For an industry such as this, relatively high deposition rates are expected due to handling and processing of aggregate material. As can be seen from Table 3, two of the ten samples collected and analysed during the year under review exceeded the Council's recommended guideline value of 0.13 g/m<sup>2</sup>/day, or the consent limit of 4 g/m<sup>2</sup>/30 days for deposited particulate at monitoring locations at the site boundary.

### January 2018 survey

Two gauges (sites AIR006302 and AIR006303) showed elevated rates at the guideline limit during the January survey.

### February 2018 survey

There were no exceedances for any samples collected in the vicinity of the Downer site.

Table 3 Deposition gauge results from around the Downer EDI Works Ltd site

Site ID	Dust deposition rate (g/m <sup>2</sup> /day)	
	Run 1 from 09/01/2018 to 29/01/2018	Run 2 from 07/02/2018 to 27/02/2018
AIR006301	0.07	0.06
AIR006302	<b>0.13</b>	0.04
AIR006303	<b>0.15</b>	0.10
AIR006305	0.08	0.05
AIR006307	0.06	0.03
Guideline value:	0.13 g/m <sup>2</sup> /day	

Key: Results in bold are at recommended guideline value

### 2.2.3 Investigations, interventions, and incidents

In the 2017-2018 period, the Council was not required to undertake significant additional investigations and interventions, or record incidents, in association with Downer's conditions in their resource consent or provisions in Regional Plans.

## 2.3 Discussion

### 2.3.1 Discussion of site performance

Routine compliance monitoring inspections during the year under review found that activities at the site were well managed. There were no off site effects found from either dust or odour due to Downer's activities at the time of inspection. The asphalt plant was in operation on one of the two compliance monitoring inspections undertaken.

In terms of potential dust issues it is considered that activities at the site were generally well managed. There were two exceedances of the particulate deposition rate guideline value, or the consent limit.

There were no dust or odour complaints received by the Council.

### 2.3.2 Environmental effects of exercise of consents

Deposition gauging was conducted for the 56<sup>th</sup> and 57<sup>th</sup> time during the 2017-2018 monitoring year around the Downer site.

The results from the dust deposition gaugings show that of the ten samples collected during the 2017-2018 period, two were in excess of the particulate deposition rate guideline values adopted by the Council (Figure 3).

It is noted that there were no complaints received by the Council in relation to dust issues from the Downer site during the 2017-2018 year.

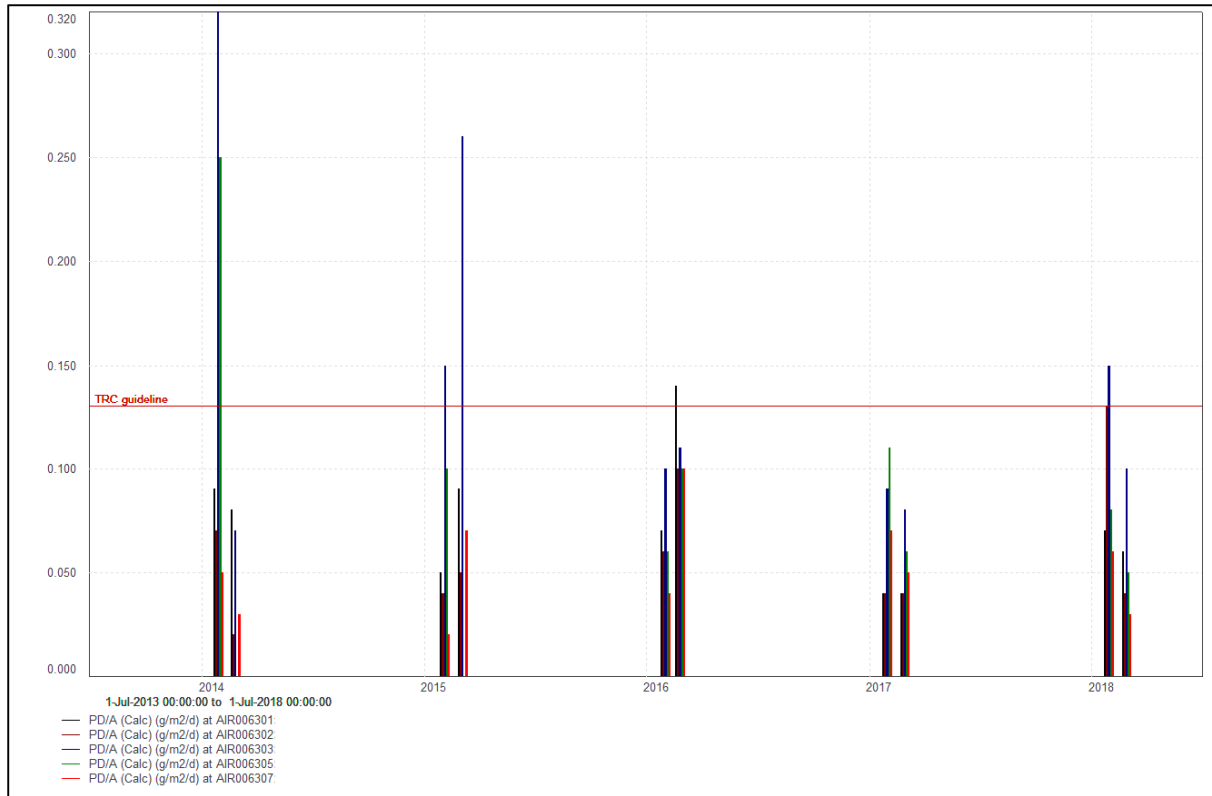


Figure 3 Deposition gauge results at Downer EDI Works monitoring sites (July 2013 – July 2018)

### 2.3.3 Evaluation of performance

A tabular summary of Downer's compliance record for the year under review is set out in Table 4.

Table 4 Summary of performance for Consent 4060-4, Downer EDI Works Ltd discharge of emissions to air

<b>Purpose: To discharge emissions to air from the manufacture of hot mix asphalt paving mixes and associated activities</b>		
<b>Condition requirement</b>	<b>Means of monitoring during period under review</b>	<b>Compliance achieved?</b>
1. Exercised in accordance with the application	Inspection	Yes
2. Adoption of action likely to minimise adverse effects on the environment	Inspection, liaison with consent holder	Yes
3. Approval prior to alterations to plant or processes	Inspection and liaison with consent holder	N/A
4. Prohibition of recycled asphalt processing	Inspection and liaison with consent holder	Yes
5. Reduction of noxious emissions through six monthly burner maintenance	Discussed during inspection	Yes

<b>Purpose: To discharge emissions to air from the manufacture of hot mix asphalt paving mixes and associated activities</b>		
<b>Condition requirement</b>	<b>Means of monitoring during period under review</b>	<b>Compliance achieved?</b>
6. Operation using waste oil not permitted	Inspection and liaison with consent holder	Yes
7. Sulphur content of fuel	Discussed during inspection. Diesel not used in asphalt plant	Yes
8. Treatment prior to gas discharge	Inspection found emissions captured and treated satisfactorily. No complaints received. Emissions monitoring undertaken twice during the monitoring period	Yes
9. One stack emissions testing between 2016-2020	Review of documentation provided to the Council. Plant conditions required for monitoring clarified	N/A
10. Definition of methodology to be used for stack emissions testing	Review of documentation provided to the Council	N/A
11. Particulate deposition rate at site boundary	Deposition gauge monitoring	Yes With two minor exceedances
12. Objectionable odour or level of dust not permitted at site boundary	Inspection and observation when inspecting officer is in the vicinity of the site on other business	Yes
13. Definition of factors constituting an objectionable odour	N/A	N/A
14. Limit on suspended particulate matter at or beyond boundary	No visible dust at boundary at inspection	Yes
15. No noxious or toxic levels of airborne contaminants at site boundary	Inspection and observation when inspecting officer is in the vicinity of the site on other business	Yes
16. Control of ground levels of nitrogen dioxide	Future monitoring as required	N/A
17. Control of ground levels of sulphur dioxide	Compliance previously demonstrated, and consent holder did not use diesel during year under review	N/A
18. Minimisation of dust emissions from aggregate and crusher dust through treatment and shielding	Inspection and observation when inspecting officer is in the vicinity of the site on other business. No dust complaints received	Yes
19. Cleaning of yard	Inspection and observation when inspecting officer is in the vicinity of the site on other business. No dust complaints received	Yes
20. Duration of smoke discharges	Inspection and observation when inspecting officer is in the vicinity of the site on other business. No complaints received regarding visible emission/smoke	Yes



<b>Purpose: To discharge emissions to air from the manufacture of hot mix asphalt paving mixes and associated activities</b>		
<b>Condition requirement</b>	<b>Means of monitoring during period under review</b>	<b>Compliance achieved?</b>
21. Maintenance of equipment important to controlling emissions	Information discussed at inspection and observation when inspecting officer is in the vicinity of the site on other business	Yes
22. Inspection of water scrubber and settling pond	Discussed at inspection	Yes
23. Maintenance of a log	Discussed at inspection	Yes
24. Availability of log to Chief Executive of the Council	Available on request	Yes
25. Maximum temperature in hotmix drum	Inspection and liaison with consent holder	Yes
Overall assessment of consent compliance and environmental performance in respect of this consent		<b>High</b>
Overall assessment of administrative performance in respect of this consent		<b>High</b>

During the year, the Downer EDI Works Ltd demonstrated a high level of environmental performance and administration performance and compliance with their resource consent, as defined in Section 1.1.5.

### 2.3.4 Recommendations from the 2016-2017 Annual Report

In the 2016-2017 Annual Report, it was recommended:

1. THAT monitoring of consented activities at the Downer EDI Works Ltd site in the 2017-2018 year continues at the same level as in 2016-2017.

This recommendation was implemented.

### 2.3.5 Alterations to monitoring programmes for 2018-2019

In designing and implementing the monitoring programmes for air/water discharges in the region, the Council has taken into account:

- the extent of information already made available through monitoring or other means to date;
- its relevance under the RMA;
- the Council's obligations to monitor consented activities and their effects under the RMA;
- the record of administrative and environmental performances of the consent holder; and
- reporting to the regional community.

The Council also takes into account the scope of assessments required at the time of renewal of permits, and the need to maintain a sound understanding of industrial processes within Taranaki exercising resource consents.

It is proposed that for 2018-2019 the programme continues at the same level as in 2017-2018.

It should be noted that the proposed programme represents a reasonable and risk-based level of monitoring for the site(s) in question. The Council reserves the right to subsequently adjust the programme from that initially prepared, should the need arise if potential or actual non-compliance is determined at any time during 2018-2019.

## 2.4 Recommendation

1. THAT monitoring of consented activities at the Downer EDI Works Ltd site in the 2018-2019 year continues at the same level as in 2017-2018.
2. THAT should there be issues with environmental or administrative performance in 2017-2018, monitoring may be adjusted to reflect any additional investigation or intervention as found necessary.

## 3 Fitzroy Engineering Group Ltd

### 3.1 Introduction

#### 3.1.1 Process description

Fitzroy Engineering Group Ltd (Fitzroy Engineering) carries out abrasive blasting to clean and prepare surfaces for painting. The process involves blasting "garnet", an abrasive sand-like substance, onto the surface of the object in question. Material from the blasting process becomes airborne due to the release of high pressure air used to accelerate the abrasive media to the required cleaning velocities. Spray painting is also carried out on the site.

Emissions from abrasive blasting operations have the potential to cause nuisance and possible health risks, especially when conducted within populated areas. The Fitzroy Engineering permanent site is within an industrial area. The environmental effects of dusts can include loss of visibility, loss of the amenity and aesthetic values of a 'clear sky', irritation to breathing, and soiling of surfaces. In the case of dust emissions from Fitzroy Engineering's blasting operation, there is also the potential for the dust to contain metals such as lead, zinc and chromium from the surface of the items blasted. The potential for lead to be contained in the dust has been significantly reduced as Fitzroy Engineering now undertakes lead testing as a matter of course. If a positive result is obtained, special procedures apply to contain and dispose of the debris in accordance with Department of Labour Guidelines. Fitzroy Engineering has also informed Council that the blasting of chromium items is not undertaken.

Fitzroy Engineering has carried out abrasive blasting in the permanent facilities and in the yard at their site on Rifle Range Road, New Plymouth since 1990, and also undertakes abrasive blasting work on fixed items at various locations throughout the Taranaki region (mobile blasting).

At the Fitzroy Engineering site there is a permanent facility called the "grit room". The grit room has a wet scrubber unit on its discharge outlet to minimise emissions to the atmosphere. The wet scrubber was commissioned in July 1995. The canvas curtains at the north-east end of the building were replaced by solid doors during the 1998-1999 monitoring period. These doors more effectively contained dust emissions from the operation. The grit room is now used very infrequently, and was not used at all during the year under review.

Fitzroy Engineering has another facility on its premises to provide for unusually sized and/or shaped objects. This facility is called the "garnet shed". A scrubber tower and spray system was installed to mitigate emissions from the garnet shed in June 2000, which was expected to provide a decrease in particulate levels on and off site. An upgrade was carried out in January 2003 when a stack extension, incorporating a third ring of water spray nozzles, was added. Further upgrades were undertaken during the 2005-2006 year when it was found that the discharge from the stack did not comply with condition 7, limiting the particulate emissions to less than 125 mg/m<sup>3</sup>. The upgrade consisted of a reduction in nozzle size to achieve a more effective droplet size, and changing the spray configuration from a circumferential pattern to a centrally located arrangement. These upgrades were intended to generate a more effective water mist within the tower. Spent garnet and waste removed from the bottom of the scrubber towers was stored in bags in the yard, which were then disposed of by a contracted company on an as required basis.

In 2015, a new 'Blastquip' fabric filter air treatment system was installed at the garnet shed (Photograph 2). This new system is considered to be the best practicable option for air treatment and a significant improvement from the wet scrubber system. Essentially, air is extracted from the roof at the northern end of the shed and directed through a filter system. The treated air is then returned to the shed at the southern end of the roof. The system is largely 'closed loop'; however, some of the treated air is discharged to the atmosphere with ambient air introduced into the shed, in order to control the shed temperature.



Photo 2 Blastquip fabric filter air treatment system at Fitzroy Engineering

The 'Blastquip' system has since been inspected by an external consultant from JCL Air and Environment Ltd in order to assess the feasibility and necessity of emission monitoring. Due to a number of factors, the consultant determined that emission monitoring was not feasible. Furthermore, the system's specifications provided by Blastquip indicated that the particulate concentration of treated air would be around  $0.1 \text{ mg/m}^3$ ; well below the guideline level of  $125 \text{ mg/m}^3$ . Instead, the consultant's recommendation was to require compliance of the consent holder through the implementation of a management plan for the 'Blastquip' air treatment system. All these recommendations were set out as new conditions in a consent change in June 2016. They have subsequently been implemented.

Yard blasting is carried out when items cannot be blasted within the grit room or garnet shed. The yard areas on site are predominantly gravel, and therefore any sandblasting material spilt or deposited on site from aerial emissions is difficult to manage, and may be re-suspended by wind or vehicle movements. A substantial area of the yard near the offices at the Rifle Range Road end of the site was sealed during the 2002-2003 monitoring period.

The containment of emissions from yard and mobile blasting is limited to the use of screens, tarpaulins and other similar methods of airborne particulate suppression due to the temporary nature of the work being carried out.



Figure 4 Fitzroy Engineering Group Ltd site and deposition gauge locations

### 3.1.2 Air discharge permit

Fitzroy Engineering Group Ltd holds air discharge permit 4025 to cover discharge of emissions into the air from abrasive blasting operations at the factory site and from field abrasive blasting operations at various locations. The Council issued this permit on 6 May 1992 as a resource consent under Section 87(e) of the RMA. The variation to include emissions to air from mobile blasting at various locations throughout the Taranaki region was made on 24 March 1993. The consent expired on 1 June 2002.

Fitzroy Engineering applied for a renewal of consent on 19 October 2001. Therefore, they could continue to operate under the terms and conditions of this consent until a decision on the renewal of consent was made. Negotiations between Fitzroy Engineering and one of the potentially affected parties, relating to the proposed special conditions, took place over an extended period. The final non-notified approval form was received on 17 November 2006 and the renewed consent was issued on 21 November 2006. The consent is due to expire on 1 June 2020. A change to consent conditions was processed in June 2016, to allow for the change to air treatment equipment at the plant.

The conditions on the consent are intended to reduce the quantity, control the quality, and minimise the potential for adverse effects of emissions from the blasting activities and associated processes. This was achieved by:

- Requiring the consent holder adopt the best practicable option, as defined in the RMA, to minimise emissions (special condition 1).
- Ensuring that consideration is given to weather conditions, and limiting the locations at which blasting may be undertaken (special conditions 5, 10, and 20). In general the blasting must be undertaken within the permanent facilities, where the discharge must be contained and treated to meet specific discharge limits (special conditions 11 and 19).

- Ensuring that adequate screening is in place for yard and mobile blasting (special conditions 21 and 22).
- Controlling the blasting media used (special conditions 3 and 7).
- Requiring that certain notifications are made and/or permissions sought prior to undertaking blasting when certain infrequent or "higher risk" blasting activities are undertaken (special conditions 17, 18, 23, and 25). In the case of the Council, this allows for additional requirements to be placed on the consent holder in certain circumstances, and ensures the opportunity for Council to undertake monitoring specific to those activities.
- Addressing housekeeping issues (special condition 6).
- Limiting the effect the discharge may have on ambient air quality, particulate deposition rates, and surface water quality (special conditions 4, 8, 24, and 26).
- Requiring that the consent holder ensures that all operators understand and comply with the conditions of the consent (special condition 9).
- Requiring that the consent holder prepares a management plan to ensure that they have systems in place so that staff manage their work in a way that will comply with consent conditions (special condition 15).
- Requiring that the consent holder adheres to the procedures set out in the management plan, operates in a way that is consistent with the information provided in support of the consent application, and makes any information recorded in relation to the management plan available to the Council (special conditions 2, and 12 to 14).
- Provides for sealing of areas of the site if the management practices proposed in the plan are not successful in controlling windblown dust from the site (special conditions 15 and 16).

This summary of consent conditions may not reflect the full requirements of each condition. The consent conditions in full can be found in the resource consent(s) which is/are appended to this report.

## 3.2 Results

### 3.2.1 Inspections

Three routine compliance monitoring inspections were undertaken during the 2017-2018 year, on 19 December 2017, 21 February 2018, and 22 June 2018. Inspections were undertaken in relation to monitoring of the stormwater consent for the site, which up until 21 February 2014 was held by Technix Group Ltd. For completeness, the findings of the inspections that relate to Fitzroy Engineering's stormwater discharge consent were previously reported here, but are now be reported under Fitzroy Engineering's section of the Lower Waiwhakaiho Catchment Monitoring Report.

There is also provision for a further inspection of mobile blasting operations to be undertaken by the Council. No mobile blasting was undertaken, and as such no inspections were required.

#### 19 December 2017

An inspection was carried out in overcast conditions with a light south easterly wind. Outdoor blasting activities were occurring at the time and were compliant with consent conditions. The sprinkler dust control system on the south east boundary required repair, and it was advised that the door and concrete area at and around the blasting shed were required to be kept clean.

#### 21 February 2018

An inspection was carried out in fine weather with light wind conditions. The yard was noticeable tidier than the previous inspection, and all areas around the doors were free of garnet dust build-up. It was

recommended that these areas continue to be regularly cleaned and that the sprinklers continued to be maintained to minimise the effects of traffic movement.

The site was compliant with resource consent conditions at the time of inspection.

### 22 June 2018

An inspection was carried out in fine weather with light wind conditions. TRC officers were accompanied onsite by Doug Timanus (Fitzroy Engineering), when it was found that containment of used garnet was non-compliant with special conditions 6 and 11 of the resource consent. Storage bags containing used garnet had split and the garnet residue had discharged to ground where it had become mobilised and showed evidence of discharge to the stormwater system. The blasting unit and scrubbers were operational at the time, and it was found that dust discharges were occurring from under the roof eaves and scrubber areas. Further enforcement action was being considered.

The site was compliant with all other consent conditions at the time.

#### 3.2.1.1 Mobile blast inspections

No notification was received by the Council regarding mobile blasting being undertaken by Fitzroy Engineering during the year under review and therefore, no inspections were carried out in relation to this activity.

### 3.2.2 Provision of company data

#### 3.2.2.1 Operation, Management and Maintenance Plan

As per special conditions 12, 13 and 14 of the new consent, Fitzroy Engineering was required to update and maintain an Operation, Management and Maintenance Plan (OMMP) which detailed their procedures. This includes:

- Staff training
- General housekeeping and yard maintenance
- Blasting operations
- Monitoring and maintenance of the blasting buildings and air discharge treatment systems
- Records of training, monitoring and maintenance, and complaints.

The OMMP was received from Fitzroy Engineering on 31 August 2018, and subsequently implemented into the monitoring programme. Adherence to this plan was assessed during the compliance monitoring inspection visits.

### 3.2.3 Results of receiving environment monitoring

#### 3.2.3.1 Deposition gauging

Deposition gauges were deployed on two occasions during the monitoring period. The first deployment began in January 2018 and lasted 20 days. The second deployment began in February 2018 and lasted 20 days. See section 1.3.4 for an overview of the purpose and methodology of deposition gauge monitoring.

A site map marking the location of the gauges around the Fitzroy Engineering site are shown in Figure 4. The results for the year under review are given in Table 5, with the prevailing wind directions during the surveys given in Appendix II.

Table 5 Deposition gauge results from around the Fitzroy Engineering Group Ltd site

Site ID	Dust deposition rate (g/m <sup>2</sup> /day)	
	Run 1 from 09/01/2018 to 29/01/2018	Run 2 from 07/02/2018 to 27/02/2018
AIR006401	<b>0.27</b>	<b>0.20</b>
AIR006402	<b>0.26</b>	0.06
AIR006403	0.12	0.07
AIR006404	0.07	0.03
AIR006405	0.10	0.06
AIR006406	0.05	0.04
Guideline value:	0.13 g/m <sup>2</sup> /day	

Key: Results in bold exceed recommended guideline value

The monitoring showed that the deposited particulate was in excess of Fitzroy Engineering's consent limit in three of the twelve gauges collected during the year under review. Specifically, the samples collected from gauging locations AIR006401 and AIR006402 exceeded the limit.

#### January 2018 survey

The January survey found that the particulate deposition rate limit was exceeded at two sites, AIR006401 (SE of the blasting shed) and AIR006402 (opposite the loading ramp).

The material collected ranged from clear to light yellow. The appearance of the particulate matter collected was consistent with re-suspended yard dust from the surrounding area and vegetation rather than blasting media.

#### February 2018 survey

The February survey found that the particulate deposition rate limit was exceeded at one site, near the garnet shed (AIR006401).

The material collected was a spotty dark grey, with an appearance consistent with re-suspended yard dust from the surrounding area rather than blasting media.

No dust complaints were received regarding dust issues originating from the Fitzroy Engineering site.

The available evidence indicates that the elevated levels of dust deposition found in the gauges around Fitzroy Engineering were not as a result of the activities occurring on this site.

### 3.2.4 Investigations, interventions, and incidents

In the 2017-2018 period, the Council was required to record an incidents in association with Fitzroy Engineering's conditions in their air discharge consent or provisions in the Regional Air Quality Plan.

An inspection in June 2018 found that inadequate maintenance and housekeeping had resulted in a discharge of used garnet residue to ground where it had entered the stormwater system. It was also found that dust discharges were occurring from under the roof eaves and scrubber areas during blasting operations. An abatement notice EAC-22070 was issued which required Fitzroy Engineering to undertake works to ensure compliance with consent conditions. Follow-up inspections confirmed that this had been done.



## 3.3 Discussion

### 3.3.1 Discussion of site performance

Unauthorised incidents, mainly as a result of inadequate maintenance, continue to be reported on site during inspections, however staff compliance with inspection advice and enforcement action was high throughout the monitoring period. During the year under review, blasting was occurring during one out of three inspections and there were no reported issues associated with the condition of the plant. There were also no visible emissions noted, following an upgrade to the air discharge treatment system the previous year.

The Operation, Management and Maintenance Plan continued to be implemented and operational throughout the monitoring year, with only one issue noted during compliance monitoring inspections.

During the year under review there were no complaints received by the Council relating to dust emissions or off site odours from the site.

### 3.3.2 Environmental effects of exercise of consent

Abrasive blasting operations have the potential to create adverse effects on health and the environment as well as creating nuisance. The impact that sandblasting has is determined by the type of abrasive material used (for example if it is sand that is dust free with low silica content), the effectiveness of the blasting enclosure and treatment system, the procedures followed by staff when blasting outside the blasting room (for example temporary screening), and the items blasted (e.g. with coatings such as lead-based paints or larger rusted areas resulting in generation of extra detritus).

Deposition gauging was conducted for the 44<sup>th</sup> and 45<sup>th</sup> time during the 2017-2018 monitoring year around the Fitzroy Engineering site.

The results from the gaugings found that three of the twelve samples collected during the 2017-2018 period were in excess of the consent limit (Figure 5). However, the results could not be directly attributed to Fitzroy Engineering's site; rather the high particulate deposition was more likely due to yard dust re-suspension from the wider area. Predominant winds during the first gauging period were split between northerlies and westerlies, and during the second period between west, and southwest and southeast (Appendix II). Particularly due to these variable winds, the neighbouring properties cannot be discounted as potential contributors to the high deposition rate.

The site and immediate surrounding landscape has been significantly reshaped by human activity, and has no features of particular aesthetic, cultural, or other value. The main highway, golf course, and Mangaone Stream/Waiwhakaiho River are unlikely to be affected by activities on the site.

There is the potential for the staff and property of industries in the surrounding area to be affected by dust generated by Fitzroy Engineering and during recent years a significant amount of commercial development has occurred in the area. This increases the potential for complaints, as the number of people working in this area, and the number of public visiting the area has increased.

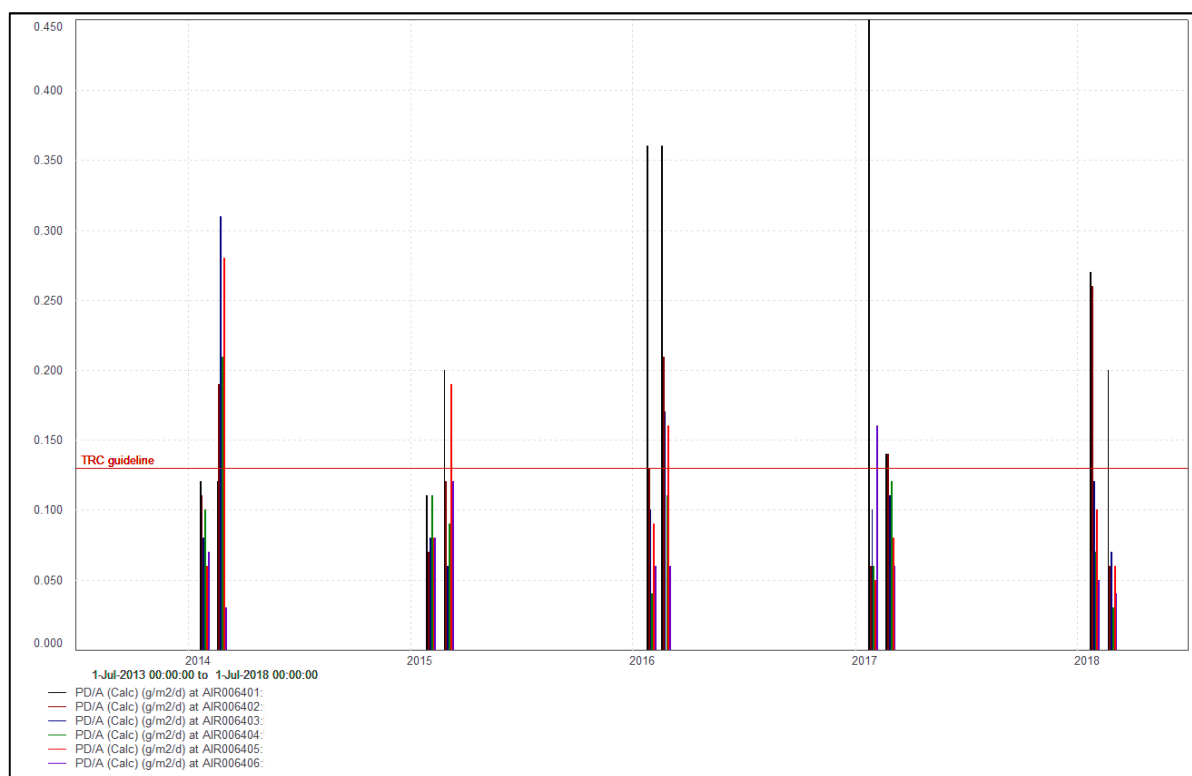


Figure 5 Deposition gauge results for the Fitzroy Engineering monitoring sites from July 2013 to July 2018

### 3.3.3 Evaluation of performance

A tabular summary of Fitzroy Engineering's compliance record for the year under review is set out in Table 6.

Table 6 Summary of performance for Consent 4025-3, Fitzroy Engineering Group Ltd discharge of emissions to air

Purpose: To discharge emissions to air from abrasive blasting operations and associated activities at the factory site and from yard blasting operations and mobile abrasive blasting at various locations throughout the Taranaki region		
Condition requirement	Means of monitoring during period under review	Compliance achieved?
All operations		
1. Adopt best practicable option to avoid, remedy, or mitigate effects	Inspection, liaison with consent holder and observation when inspecting officer is in the vicinity of the site on other business, along with deposition gauge monitoring	No – lack of maintenance resulted in consent breach
2. Exercise consent in manner consistent with consent application	Inspection and liaison with consent holder	Yes
3. Sand-free silica limit of 5 % and limit of 2 % finer than 0.15 mm diameter	Inspection and liaison with consent holder. Dry sand not used	Yes

**Purpose: To discharge emissions to air from abrasive blasting operations and associated activities at the factory site and from yard blasting operations and mobile abrasive blasting at various locations throughout the Taranaki region**

Condition requirement	Means of monitoring during period under review	Compliance achieved?
1. No offensive, objectionable or toxic odour or dust beyond boundary. Suspended particulate <3 mg/m <sup>3</sup>	Inspection and observation when inspecting officer is in the vicinity of the site on other business	Yes
2. Take account of wind conditions to minimise off-site emissions	Inspection and observation when inspecting officer is in the vicinity of the site on other business	Yes
3. Clearance of blasting material	Inspection	Yes
4. Avoidance of dry sand blasting	Inspection and liaison with consent holder. Dry sand not used	Yes
5. Particulate deposition rate limit of 0.13 g/m <sup>2</sup> /day	Deposition gauging	Three of twelve gauges above limit, but may be attributable to neighbours' activities
6. Compliance of operators with conditions	Inspection	Yes
<b>Operations within permanent facilities</b>		
7. Enclosed blasting at permanent site	Inspection and observation when inspecting officer is in the vicinity of the site on other business	Yes
8. All emissions contained and treated as far as practicable	Inspection and observation when inspecting officer is in the vicinity of the site on other business	Yes
9. Provision and maintenance of Management Plan	Plan on file	Yes
10. Consent to be exercised in line with management plan	Inspection and liaison with consent holder	No – lack of maintenance resulted in consent breach
11. Availability of information collected for condition 12	Inspection and liaison with consent holder, and accessing information recorded by consent holder	Yes
12. If control of windblown dust not effective, condition 19 to apply	Inspection and observation when inspecting officer is in the vicinity of the site on other business, deposition gauge results	Yes
13. Yard and roadways to be sealed and maintained subject to condition 18	N/A	N/A
14. Notification prior to using more than three blasting nozzles	Check of the Council records, inspection and liaison with consent holder. No more than three nozzles used	N/A

<b>Purpose: To discharge emissions to air from abrasive blasting operations and associated activities at the factory site and from yard blasting operations and mobile abrasive blasting at various locations throughout the Taranaki region</b>		
<b>Condition requirement</b>	<b>Means of monitoring during period under review</b>	<b>Compliance achieved?</b>
15. Notification prior to using grit room	Receipt of notifications, inspection and liaison with consent holder. Grit room not used	N/A
16. Emissions limits for lead, chromium and zinc	Not measured. Discussions with consent holder about materials blasted	Yes
<b>Yard operations</b>		
17. Infrequent yard blasting	Inspection and observation when inspecting officer is in the vicinity of the site on other business	Yes
18. Screening at yard blasting to contain dust emissions	Inspection and observation when inspecting officer is in the vicinity of the site on other business	N/A
<b>Mobile operations</b>		
19. Screening at mobile blasting to contain emissions	Inspection and observation when inspecting officers travelling in region	Yes
20. Notification seven days to 48 hours before blasting near watercourses	Notification received	Yes
21. Prohibited effects in surface watercourses	Inspection	Yes
22. Notification if blasting close to dwelling or property boundary	No notifications received. No complaints received	N/A
23. Suspended particulate limit of 3 mg/m <sup>3</sup> and deposited particulate of 0.13 g/m <sup>2</sup> /day beyond boundary	Not measured during year under review	N/A
<b>Review</b>		
Overall assessment of consent compliance and environmental performance in respect of this consent		<b>Good</b>
Overall assessment of administrative performance in respect of this consent		<b>High</b>

During the year, Fitzroy Engineering Group Ltd demonstrated a good level of environmental and a high level of administrative performance as defined in Section 1.1.5. One unauthorised incident was recorded in relation to housekeeping and maintenance on site, and a discharge of used garnet to stormwater resulted in a breach of consent conditions. The likely environmental effects of this discharge were considered to be low to negligible. Further inspections showed a high level of staff compliance with enforcement actions.

Although there were exceedances of the particulate deposition rate recorded, these were considered to be a result of yard dust resuspension from the surrounding area, and no complaints were received in relation to their activities during the year.

### 3.3.4 Recommendations from the 2016-2017 Annual Report

In the 2016-2017 Annual Report, it was recommended:

1. THAT monitoring of consented activities at the Fitzroy Engineering Group Ltd site in the 2017-2018 year continues at the same level as in 2016-2017.

This recommendation was implemented.

### 3.3.5 Alterations to monitoring programmes for 2018-2019

In designing and implementing the monitoring programmes for air/water discharges in the region, the Council has taken into account:

- the extent of information already made available through monitoring or other means to date;
- its relevance under the RMA;
- the Council's obligations to monitor consented activities and their effects under the RMA;
- the record of administrative and environmental performances of the consent holder; and
- reporting to the regional community.

The Council also takes into account the scope of assessments required at the time of renewal of permits, and the need to maintain a sound understanding of industrial processes within Taranaki exercising resource consents.

It is proposed that for 2018-2019 the programme remains unchanged.

It should be noted that the proposed programme represents a reasonable and risk-based level of monitoring for the site(s) in question. The Council reserves the right to subsequently adjust the programme from that initially prepared, should the need arise if potential or actual non-compliance is determined at any time during 2018-2019.

## 3.4 Recommendation

1. THAT monitoring of consented activities at the Fitzroy Engineering Group Ltd site in the 2018-2019 year continues at the same level as in 2017-2018.
2. THAT should there be issues with environmental or administrative performance in 2017-2018, monitoring may be adjusted to reflect any additional investigation or intervention as found necessary.

## 4 Katere Surface Coatings Ltd

### 4.1 Introduction

#### 4.1.1 Process description

Katere Surface Coatings Ltd (Katere Surface Coatings) operates an abrasive blasting and surface coating business from a mobile unit at a permanent site on Katere Road. A map showing the location of the site is provided in Figure 6.

The emissions from abrasive blasting operations may include sand, grit, dust, silicates, rust, detritus, and various metal compounds including zinc, iron, lead and arsenic. Emissions from surface coating processes may include objectionable odours and spray drift.

Blasting takes place within an enclosed building with emissions passed through a scrubber system before being discharged to the atmosphere. Some items are too large to process in the building and are, therefore, blasted outside. All outside work requires effective screening measures such as tarpaulins and similar covers to contain emissions within the site boundary. Screening also applies to operations carried out by the mobile unit. Weather conditions must be considered before any outside work is carried out.

The 2017-2018 monitoring year was the 27<sup>th</sup> year in which the Council has monitored air emissions from the Katere Surface Coatings site (formerly Vinsen G M Ltd) and their effects within the region.



Figure 6 Location of Katere Surface Coatings Ltd and their deposition gauge sites

#### 4.1.2 Air discharge permits

Katere Surface Coatings holds air discharge permit 4475 to cover emissions to air from abrasive blasting and surface coating activities from a mobile unit at various locations in the Taranaki region and at a permanent site in New Plymouth.

This permit was originally issued to Vinsen G M Ltd by the Council on 9 February 1994 as a resource consent under Section 87(e) of the RMA to cover mobile blasting at various locations within the Taranaki region. A variation of the consent to include the permanent site on Katere Road was issued on 21 March 1996. The consent was transferred to Katere Surface Coatings on 20 January 2003, and was renewed on 18 February 2009. The consent is due to expire on 1 June 2020.

The special conditions attached to the consent are outlined below.

As the consent is for discharges from abrasive blasting at the permanent site (within a blast shed and in the yard) and mobile blasting throughout the Taranaki region, including in the Coastal Marine Area of Port Taranaki, Special condition 1 now clearly specifies which special conditions within the consent apply to which type of activity.

The remaining conditions on the consent are intended to reduce the quantity, control the quality, and minimise the potential for adverse effects of the emissions from the blasting activities and associated processes. This is achieved by:

- Requiring that the consent holder adopts the best practicable option to prevent or minimise effects of all of their operations on the environment (special condition 2).
- Ensuring that consideration is given to weather conditions (special condition 4) and limiting the locations at which blasting may be undertaken. In general the blasting must be undertaken within the permanent facilities (special condition 9), where the discharge must be contained and treated to meet specific discharge limits (special condition 10), although there is provision for occasional yard blasting (special condition 12).
- Ensuring that adequate screening is in place for all blasting activities (special conditions 10, 14, and 15).
- Controlling the blasting media used (special conditions 6 and 7).
- Requiring that certain notifications are made prior to undertaking blasting when certain “higher risk” blasting activities are undertaken (special conditions 13, 16, 17 and 18). In the case of the Council, the notification requirements are now more specific to ensure that sufficient notice is given so that Council staff have the opportunity to undertake monitoring related to those activities and ensure that adequate controls are in place.
- Addressing housekeeping issues (special condition 5).
- Requiring that the consent holder ensures that all operators understand and comply with the conditions of the consent (special condition 8).
- New conditions limiting general off site effects related to dust and odour from all activities (special condition 3), with numerical limits on suspended and deposited particulate concentrations for mobile blasting activities (special condition 19) and deposited particulate in the vicinity of the permanent site on Katere Road (special condition 11).

Special conditions 20 and 21 contain standard provisions for the consent to lapse if not exercised and for review of conditions.

This summary of consent conditions may not reflect the full requirements of each condition. The consent conditions in full can be found in the resource consent(s) which is/are appended to this report.

## 4.2 Results

### 4.2.1 Inspections

Three routine compliance monitoring inspections were carried out during the monitoring period, on 19 December 2017, 21 February 2018, and 11 June 2018.

#### 4.2.1.1 Site inspections

19 December 2017

An inspection was undertaken in fine weather conditions. Blasting was not occurring at the time of inspection. Air particulate testing showed compliance with consent requirements, however advice was given to ensure the blast material around the outside of the blast shed continues to be regularly cleaned up. No dust was discharging beyond the boundary. The site was operating within resource consent conditions at the time of inspection.

21 February 2018

An inspection was undertaken in fine weather with north westerly wind conditions. Blasting was not occurring at the time of inspection, and the yard was tidy and significantly better maintained than on the previous visit. Improvements and repairs had been made to the blasting shed and stormwater discharge point to ensure continued compliance with consent conditions. There was no dust discharging from the site.

11 June 2018

An inspection was carried out in fine weather with light southerly wind conditions. The yard driveway had been fully sealed and there were future plans in place to construct a new blast building. It was advised that if the existing building was to be used instead, that maintenance would be required to ensure consent compliance. It was also recommended that adding a bunded area for the storage of used blast material would be a useful addition to the site. At the time of inspection, all consent conditions were being complied with.

#### 4.2.1.2 Mobile blast inspections

No notifications were received by the Council regarding mobile blasting being undertaken by Katere Surface Coatings during the year under review.

### 4.2.2 Results of receiving environment monitoring

#### 4.2.2.1 Deposition gauging

Deposition gauges were deployed on two occasions during the monitoring period. The first deployment began in January 2018 and lasted 20 days. The second deployment began in February 2018 and lasted 20 days.

A site map marking the location of the gauges around the Katere Surface Coatings site is shown in Figure 6, and the results of the 2017-2018 gauging surveys are given in Table 7. The prevailing wind directions during the surveys are shown in Appendix II.



Table 7 Deposition gauge results from around the Katere Surface Coating Ltd site

Site ID	Dust deposition rate (g/m <sup>2</sup> /day)	
	Run 1 from 09/01/2018 to 29/01/2018	Run 2 from 07/02/2018 to 27/02/2018
AIR009303	<b>0.13</b>	0.02
AIR009304	0.10	0.04
Guideline value:	0.13 g/m <sup>2</sup> /day	

### January 2018 survey

One gauge (site AIR009303) showed a slight exceedance of the guideline limit for the January survey. The material collected was a heavy green with some bugs present. The appearance of the particulate matter was consistent with vegetation and organic matter rather than blasting media.

### February 2018 survey

All the gauges returned results below the consent limits for the February survey.

## 4.2.3 Investigations, interventions, and incidents

In the 2017-2018 period, the Council was not required to undertake significant additional investigations and interventions, or record incidents, in association with Katere Surface Coating's conditions in their air discharge consent or provisions in the Regional Air Quality Plan.

## 4.3 Discussion

### 4.3.1 Discussion of site performance

For the sixth consecutive monitoring period, there were no complaints received during the 2017-2018 year in relation to Katere Surface Coating's activities.

Substantial improvements that were made at the site in the 2012-2013 year in relation to the treatment systems for both the blast booth and the paint shed have continued to produce significant reductions in emissions from the site.

General housekeeping at the site had improved from the previous monitoring period, and the Council was not required to issue any further abatement notices in regards to accumulation of blast material on the ground around the vicinity of the blast booth.

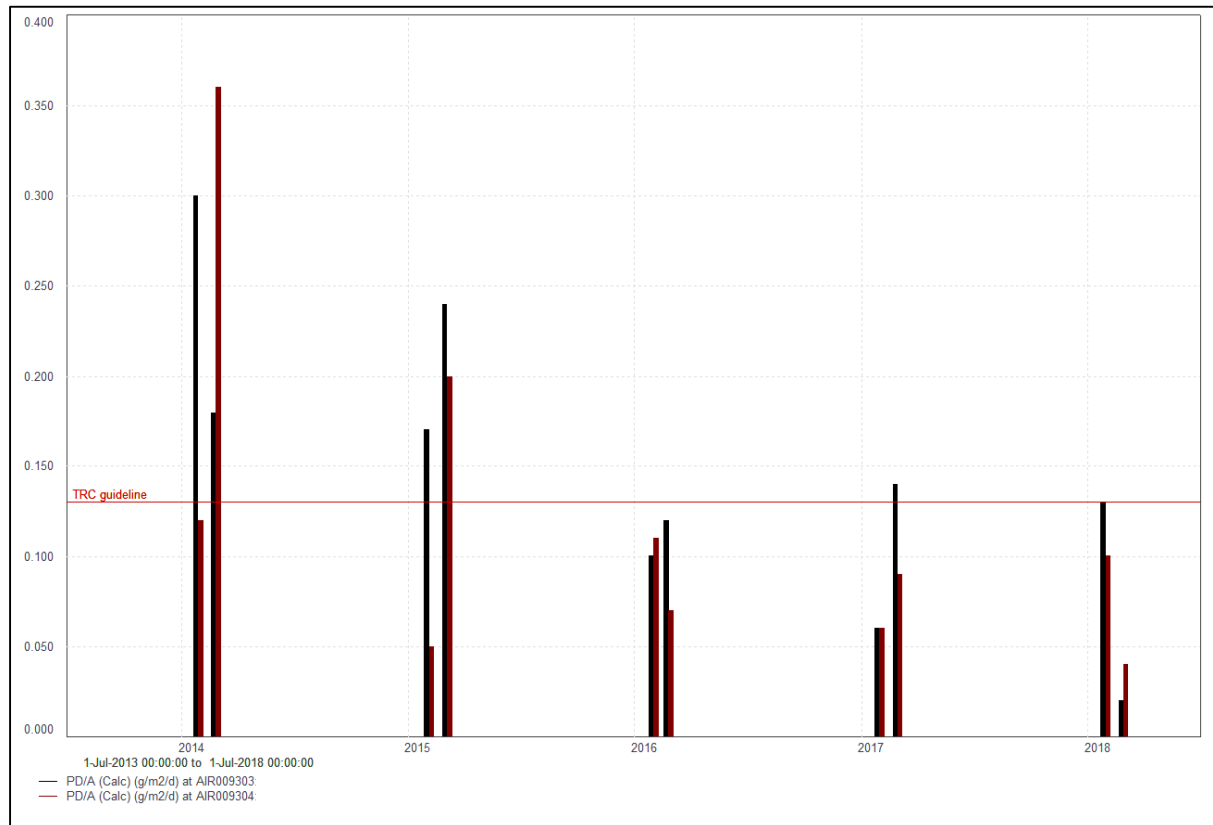
There was only a single exceedance at one site during the January 2018 survey, and there were no exceedances of the deposited particulate limit recorded in the February 2018 survey.

### 4.3.2 Environmental effects of exercise of consents

Abrasive blasting operations have the potential to create adverse effects on health and the environment as well as creating nuisance. The impact that sandblasting has is determined by the type of abrasive used (for example is it sand that is dust free with low silica content), the effectiveness of the blasting enclosure and treatment system, the procedures followed by staff when blasting outside the blasting room (for example temporary screening), and the items blasted (for example with coatings such as lead-based paints or larger rusted areas resulting in generation of extra detritus).

Deposition gauging was not previously programmed to be carried out for this activity, with the main emphasis being on measuring suspended particulates from point source discharges and ambient suspended particulate levels at the site boundary during site visits. However, with the Council's guideline value of 0.13 g/m<sup>2</sup>/day incorporated as a condition of the consent on 19 February 2009, deposition gauging was incorporated into the programme and was conducted around the Katere Surface Coatings' permanent site for the 11<sup>th</sup> and 12<sup>th</sup> time during the year under review.

The particulate deposition rate was exceeded in one of the gauges deployed during the year under review (Figure 7). There were no complaints received regarding dust impacting beyond the boundary of the



property. Predominant winds during the first gauging period were split between northerlies and westerlies, and during the second period between west, and southwest and southeast (Appendix II). Due to these variable winds, neighbouring properties cannot be discounted as potential contributors to the deposition rate.

Figure 7 Deposition gauge results for the Katere Surface Coatings monitoring sites from July 2013 to July 2018

There were no off site emissions or odours noted during any inspections, and there were no complaints related to paint odours and overspray. It appears that the new treatment system installed on the paint shed during the 2012-2013 year has continued to be effective in preventing the odour and overspray issues that resulted in a number of complaints during previous monitoring years.

The results of the 2017-2018 monitoring indicate that there were no significant adverse environmental effects that occurred as a result of Katere Surface Coatings' activities.

### 4.3.3 Evaluation of performance

A tabular summary of Katere Surface Coating's compliance record for the year under review is set out in Table 8.

Table 8 Summary of performance for Consent 4475-2, Katere Surface Coatings Ltd discharge of emissions to air

Purpose: To discharge emissions to air from abrasive blasting and surface coating activities at a permanent site located at Katere Road, New Plymouth and from mobile operations throughout the Taranaki region including within the Coastal Marine Area at Port Taranaki		
Condition requirement	Means of monitoring during period under review	Compliance achieved?
1. Specifies which special conditions apply to which activities	N/A	N/A
<b>All Activities</b>		
2. Adoption of best practicable option to minimise effects on the environment	Inspection and discussion with consent holder	Yes
3. No offensive, objectionable or toxic odour or dust beyond boundary	Inspection and observation when inspecting officer is in the vicinity of the site on other business	Yes
4. Consideration of wind conditions to minimise off-site emissions	Inspection	Yes
5. Clearance of blasting material	Inspection	Yes
6. Sand has low active silica content and limited fine particles	N/A – garnet used	N/A
7. Avoidance of dry sand blasting	Inspection and liaison with consent holder. Dry sand has not been used	Yes
8. Compliance of operators with conditions	Inspection	Yes
<b>Within the permanent facility</b>		
9. Except as provided for by S.C. 12 to 14 blasting must be in enclosed facility	Inspection and discussion with consent holder	Yes
10. Treatment of emissions prior to discharge. Limit on emissions from enclosure of 125 mg/m <sup>3</sup>	Inspection and point source suspended particulate monitoring	Yes
11. Particulate deposition rate limit of 0.13 g/m <sup>2</sup> /day	Deposition gauging	One of four gauges above limit, but may be attributable to neighbours' activities
<b>Yard blasting at Katere Road site</b>		
12. States provisions for occasional yard blasting as per S.C. 12 to 14	Inspection	Yes
13. Email notification to the Council seven days to 48 hrs prior to yard operations	Inspection and observation when inspecting officer is in the vicinity of the site on other business	Yes

<b>Purpose: To discharge emissions to air from abrasive blasting and surface coating activities at a permanent site located at Katere Road, New Plymouth and from mobile operations throughout the Taranaki region including within the Coastal Marine Area at Port Taranaki</b>		
<b>Condition requirement</b>	<b>Means of monitoring during period under review</b>	<b>Compliance achieved?</b>
14. Screening of items to be blasted	Discussion with consent holder. Water blasting used rather than dry abrasive blasting	Yes
<b>Any site other than Katere Road</b>		
15. Screening to contain emissions	No mobile blasting undertaken	N/A
16. Notification to District Council prior to blasting in residential areas	Discussion with consent holder, and review of the Council records. No notifications received as no mobile blasting undertaken	N/A
17. Email notification to the Council seven days to 48 hrs prior to blasting in close proximity to watercourse	Discussion with consent holder, and review of the Council records. No notifications received as no mobile blasting undertaken	N/A
18. Notification to affected parties prior to blasting close to boundaries	No mobile blasting undertaken	N/A
19. Suspended and deposited particulate limits 3 mg/m <sup>3</sup> and 0.13 g/m <sup>2</sup> /day respectively	No mobile blasting undertaken	N/A
<b>All Activities</b>		
20. Provision for consent to lapse if not exercised	Consent exercised	N/A
21. Optional review provision re environmental effects	No further opportunities for review	N/A
Overall assessment of consent compliance and environmental performance in respect of this consent		<b>High</b>
Overall assessment of administrative performance in respect of this consent		<b>High</b>

During the year, Katere Surface Coatings demonstrated an overall high level of environmental and administrative performance as defined in Section 1.1.5. No significant adverse environmental effects were noted due to the activities of Katere Surface Coatings during the period under review.

#### 4.3.4 Recommendations from the 2016-2017 Annual Report

In the 2016-2017 Annual Report, it was recommended:

1. THAT monitoring of consented activities of Katere Surface Coatings Ltd in the 2017-2018 year continues at the same level as in 2016-2017.

This recommendation was implemented.

#### 4.3.5 Alterations to monitoring programmes for 2018-2019

In designing and implementing the monitoring programmes for air/water discharges in the region, the Council has taken into account:

- the extent of information already made available through monitoring or other means to date;

- its relevance under the RMA;
- the Council's obligations to monitor consented activities and their effects under the RMA;
- the record of administrative and environmental performances of the consent holder; and
- reporting to the regional community.

The Council also takes into account the scope of assessments required at the time of renewal of permits, and the need to maintain a sound understanding of industrial processes within Taranaki exercising resource consents.

It is proposed that for 2018-2019, the monitoring remains unchanged.

It should be noted that the proposed programme represents a reasonable and risk-based level of monitoring for the site(s) in question. The Council reserves the right to subsequently adjust the programme from that initially prepared, should the need arise if potential or actual non-compliance is determined at any time during 2018-2019.

#### 4.4 Recommendation

1. THAT monitoring of consented activities of Katere Surface Coatings Ltd in the 2018-2019 year continues at the same level as in 2017-2018.
2. THAT should there be issues with environmental or administrative performance in 2017-2018, monitoring may be adjusted to reflect any additional investigation or intervention as found necessary.

## 5 Ravensdown Fertiliser Co-operative Ltd

### 5.1 Introduction

#### 5.1.1 Process description

Ravensdown Fertiliser Co-operative Ltd (Ravensdown) operates a storage, blending and distribution depot at the site which is bounded by Smart, Devon and Katere Roads in the Waiwhakaiho area of New Plymouth. Urea and phosphate fertiliser products are transported to the Ravensdown storage facility by rail or by road from the port.

The product is received either into the "intake" area or directly into the stores by tipping the truck out onto the floor within the store. Product unloaded at the "intake" is then transferred to the stores by an overhead belt transfer system. In the case of the high analysis store, product is sometimes deposited onto the ground outside the store and transferred into the store by front end loader.

In general, products are dispatched by loading the product into a hopper, which feeds a mechanical elevator to the overhead belt system. This then carries the product to the load-out/weighbridges.

The closure of the fertiliser manufacturing plants at the Ravensdown site, in July 1997, eliminated the potential for emissions of gases such as sulphur dioxide and hydrogen sulphide into the air, but an unforeseen dust problem occurred. This was due to the dry fine grain nature of the superphosphate compared to the moist product that was stored after manufacture at the site prior to July 1997.

The main activities that result in the generation of dust are the receipt of product and load-out of product at the weighbridges. The principal potential consequences of these discharges are air-borne dust nuisance effect, soiling of property, and nutrient enrichment of the groundwater and stormwater run-off in the vicinity of the site.

Ravensdown have taken the following steps to mitigate the dust problem:

- establishing two superphosphate receiving sheds, one at the north of the plant and one at the south of the plant;
- initiated procedures where the receiving shed will be selected according to the wind direction at the time of receipt;
- sealing both of these storage sheds;
- sealing roadways to make it easier to clean-up spilt product that could be resuspended by the wind;
- cones fitted to the end of the load-out chutes to improve the degree of containment as the product free falls into the trucks.

The manufacturing plant has been progressively stripped as part of decommissioning. Ravensdown has been continuing to upgrade the buildings, particularly the roof areas. This is contributing to the continued remediation of dust emissions to the atmosphere caused by the storage, blending, packing and dispatch of fertiliser.



Figure 8 Ravensdown Fertiliser Co-operative Ltd site and deposition gauge locations

### 5.1.2 Air discharge permit

Ravensdown holds air discharge permit 4024 to cover emissions to air from the manufacture, storage and distribution of fertilisers, sulphuric acid, chromium sulphate, and associated practices. The Council originally issued this permit to Farmers Fertilisers on 25 July 1995 as a resource consent under Section 87(e) of the RMA. The consent was transferred to Ravensdown on 21 July 1997. The consent was renewed to cover emissions to the air solely from the storage, blending and distribution of fertiliser and was granted on 4 December 2008 for a period until 1 June 2026.

A summary of the conditions of the consent is provided below.

The conditions of the consent focus on ensuring that there are no effects off site that are more than minor in relation to dust and/or odour, or as a result of aerial discharges resulting in deposited contaminants on site which may then become entrained in the stormwater. This is achieved by:

- Requiring the consent holder to consider in advance, the potential for effects of the activities on site by adopting the best practicable option (special condition 1), taking into account wind direction (special condition 2), undertaking as much product transfer and blending of fertiliser under cover as possible (special condition 6), and supplying an odour management plan to the Council if potentially odorous product are introduced to the site (special condition 9).
- Prohibiting offensive or objectionable dust or odour (special condition 4), placing numerical limits on suspended and deposited particulate beyond the site boundary (special condition 3), and requiring that the consent holder keeps a record of all incidents that result in, or have the potential to result in off site effects (special condition 7).
- Addressing housekeeping matters (special condition 5).
- Requiring notification to Council prior to making changes at the site that could adversely affect discharges from the site (special condition 8), and allowing the consent conditions to be reviewed in

the light of this notification in addition to the standard review provisions to change limits and/or deal with adverse effects (special condition 10).

## 5.2 Results

### 5.2.1 Inspections

The site was inspected three times during the 2017-2018 monitoring year in relation to air discharge matters. Inspections were carried out on 16 January 2018, 21 February 2018, and 22 June 2018.

#### 16 January 2018

An inspection was undertaken in fine weather with light north westerly wind conditions. There was minimal activity onsite, and WorkSafe were currently undertaking to decommission the site prior to the move to the new premises on Katere Road. Advice was given to ensure that consent conditions continued to be complied with during this period of change.

#### 21 February 2018

An inspection was undertaken in fine weather with light wind conditions. At the time of inspection all consent conditions were being complied with. The buildings and operational areas were tidy and it appeared that some maintenance works had been carried out prior to the move to the new premises. Air monitoring was carried out during the inspection, with no issues found.

#### 22 June 2018

An inspection was carried out in fine weather with light wind conditions. At the time of inspection, all activity on the site was limited to the removal and transportation of product to the new facilities on Katere Road. All consent limits were being complied with during this process.

### 5.2.2 Results of receiving environment monitoring

During the year under review six deposition gauges were deployed at sample sites in the vicinity of the Ravensdown premises on two occasions. The first deployment began in January and lasted 20 days. The second deployment began in February and lasted 20 days. All of the sites are shown in Figure 1, and those in closer proximity to the site are also shown in Figure 8. Their locations are described in Table 9. The material from these gauges was analysed for solid particulates and total deposited phosphorus. The deposition survey results for the year under review are presented in Table 10. The prevailing wind directions during the surveys are shown in Appendix II.

Table 9 Description of Ravensdown deposition gauge sample sites

Site Code	Location description
AIR006221	On the banks of the Waiwhakaiho River, north of Harvey Normans
AIR006222	On Devon Road opposite Ravensdown's site entrance
AIR006227*	On the north side of the railway and the east side of Smart Road
AIR006224	Property between Queens Road and Alberta Road, approximately 100 metres from the roadside
AIR006225	Vacant section on Craig Place off Hurlstone Drive
AIR006226	Site on the verge of roadway at the front of Toops carpark

Key: \* (replaced AIR006223)



Table 10 Deposition gauge results from around the Ravensdown site

Site ID	Run 1 from 09/01/2018 to 29/01/2018		Run 2 from 07/02/2018 to 27/02/2018	
	Dust deposition rate (g/m <sup>2</sup> /day)	Total deposited phosphorus (mg/m <sup>2</sup> /day)*	Dust deposition rate (g/m <sup>2</sup> /day)	Total deposited phosphorus (mg/m <sup>2</sup> /day)*
AIR006221	0.03	0.42	0.03	1.25
AIR006222	<0.13	1.01	0.06	1.07
AIR006224	0.12	1.44	0.07	1.38
AIR006225	0.09	N/A	0.03	0.40
AIR006226	0.11	0.48	0.05	0.29
AIR006227	0.07	2.76	0.05	0.60
Guideline value:	0.13 g/m <sup>2</sup> /day		0.13 g/m <sup>2</sup> /day	

Key: results in bold exceed recommended guideline value

\* total deposited phosphorus is a sum of dissolve reactive phosphorus and particulate phosphorus

### January 2018 survey

All six gauges returned results within the consent limits for the January survey.

### February 2018 survey

All the gauges returned results within the consent limits for the February survey.

## 5.2.3 Investigations, interventions, and incidents

In the 2017-2018 period, the Council was not required to undertake significant additional investigations and interventions, or record incidents, in association with Ravensdown's conditions in their air discharge consent or provisions in the Regional Air Quality Plan.

## 5.3 Discussion

### 5.3.1 Discussion of site performance

During inspections it was found that as far as control of emissions to air were concerned, the site was well managed. There were also no tracking of product on the yard, likely related to lower volumes of material being stored on the site and the move to the new premises.

### 5.3.2 Environmental effects of exercise of consents

No adverse environmental impacts were discovered as a result of activities undertaken on the Ravensdown site. No emissions of dust or odour were observed beyond the site boundary during either inspection.

Deposition gauging was conducted for the 51<sup>st</sup> and 52<sup>nd</sup> time during the 2017-2018 monitoring year around the Ravensdown site. The results obtained from these surveys are illustrated in Figure 9. During the sampling runs, all gauges were within the consent limit.

See section 1.3.4 for information on the environmental effects of atmospheric particulate matter.

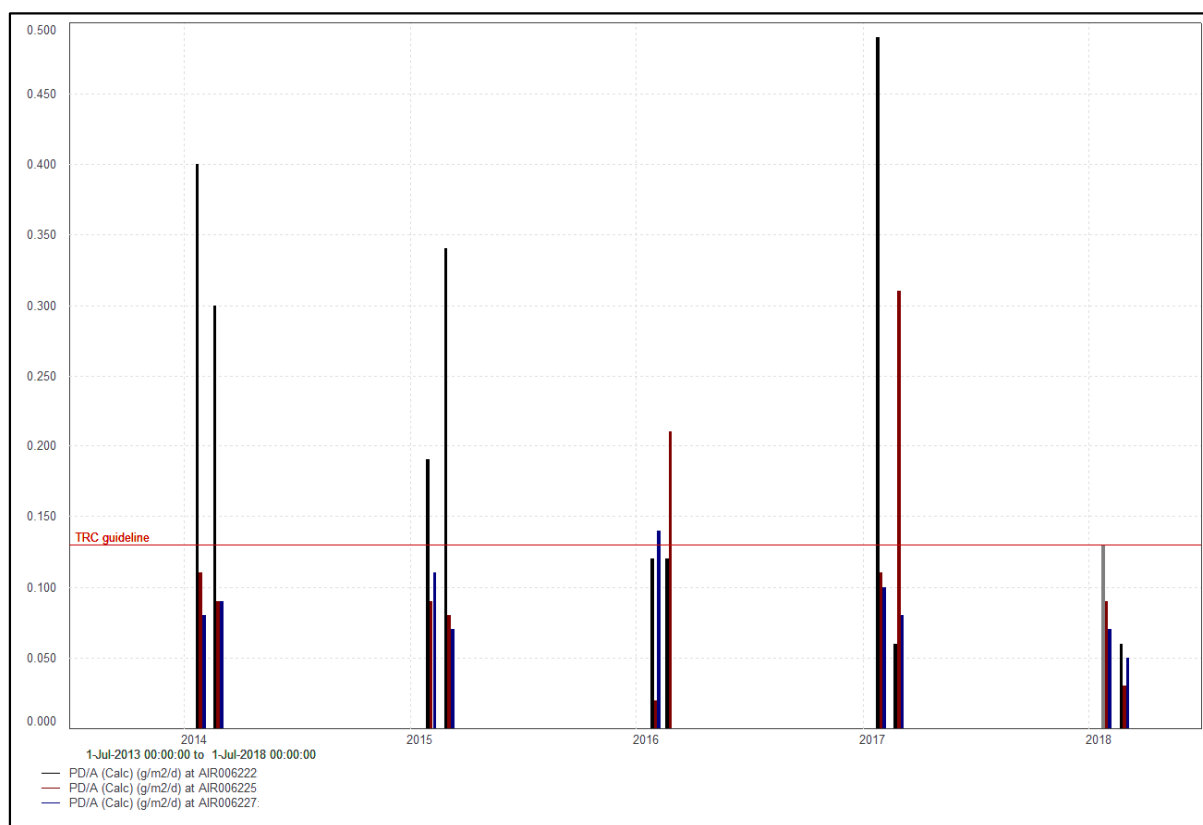


Figure 9 Deposition gauge results for the three Ravensdown monitoring sites from July 2013 to July 2018

### 5.3.3 Evaluation of performance

A tabular summary of Ravensdown's compliance record for the year under review is set out in Table 11.

Table 11 Summary of performance for Consent 4024-3, Ravensdown Fertiliser Co-operative Ltd discharge of emissions to air

Purpose: To discharge emissions to air from the storage, blending and distribution of fertiliser		
Condition requirement	Means of monitoring during period under review	Compliance achieved?
1. Adoption of action likely to minimise adverse effects on the environment	Inspection and liaison with consent holder	Yes
2. Take account of wind direction to minimise off site emissions	Inspection and liaison with consent holder. No complaints received	Yes
3. Suspended and deposited particulate limits	Suspended particulate monitoring at inspection and deposition gauging	Yes
4. No objectionable, offensive of toxic dust or odour beyond boundary	Inspection and liaison with consent holder. No complaints received	Yes
5. Fertiliser spills to be cleaned up as soon as practicable but in any case by the end of the day	Inspection	Yes

<b>Purpose: To discharge emissions to air from the storage, blending and distribution of fertiliser</b>		
<b>Condition requirement</b>	<b>Means of monitoring during period under review</b>	<b>Compliance achieved?</b>
6. Activities to be carried out inside effectively maintained buildings to minimise emissions	Inspection and liaison with consent holder	Yes
7. Record of dust complaints	Inspection and liaison with consent holder	Yes
8. Notification of changes	Review of the Council records. Inspection and liaison with consent holder. No significant changes notified or found	N/A
9. Odour management plan to be prepared if change involves odorous materials	No changes	N/A
10. Provision for review	Next opportunity for review June 2020	N/A
Overall assessment of consent compliance and environmental performance in respect of this consent		<b>High</b>
Overall assessment of administrative performance in respect of this consent		<b>High</b>

During the year, Ravensdown Fertiliser Co-operative Ltd demonstrated an overall high level of environmental and high level of administrative compliance with their air discharge consent, as defined in Section 1.1.5. No complaints concerning dust emissions were received.

### 5.3.4 Recommendations from the 2016-2017 Annual Report

In the 2016-2017 Annual Report, it was recommended:

1. THAT monitoring of consented activities at Ravensdown Fertiliser Co-operative Ltd in the 2017-2018 year continues at the same level as in 2016-2017.

This recommendation was implemented.

### 5.3.5 Alterations to monitoring programmes for 2018-2019

In designing and implementing the monitoring programmes for air/water discharges in the region, the Council has taken into account:

- the extent of information already made available through monitoring or other means to date;
- its relevance under the RMA;
- the Council's obligations to monitor consented activities and their effects under the RMA;
- the record of administrative and environmental performances of the consent holder; and
- reporting to the regional community.

The Council also takes into account the scope of assessments required at the time of renewal of permits, and the need to maintain a sound understanding of industrial processes within Taranaki exercising resource consents.

It is proposed that for 2018-2019 the monitoring remains unchanged.

It should be noted that the proposed programme represents a reasonable and risk-based level of monitoring for the site(s) in question. The Council reserves the right to subsequently adjust the programme from that initially prepared, should the need arise if potential or actual non-compliance is determined at any time during 2018-2019.

### 5.3.6 Recommendation

1. THAT monitoring of consented activities at Ravensdown Fertiliser Co-operative Ltd in the 2018-2019 year continues at the same level as in 2017-2018.
2. THAT should there be issues with environmental or administrative performance in 2017-2018, monitoring may be adjusted to reflect any additional investigation or intervention as found necessary.

## 6 Intergroup Ltd

### 6.1 Introduction

#### 6.1.1 Process description

Intergroup operates a small abrasive blasting and surface coating business at Colson Road, Waiwhakaiho (Figure 10). The emissions from the abrasive blasting operations include sand, grit, dust, silicates, and rust including various metal compounds such as zinc, iron, and lead. Emissions from the surface coatings process also include odours and spray drift on occasion.

Blasting takes place to the right hand side of the building within an enclosed area. Blasting emissions are passed through a scrubber system before being discharged to the atmosphere (Photo 3).



Photo 3 Site photos from Intergroup Ltd showing the blasting shed and key process equipment

Painting also takes place to the left side of the main building within a separate enclosed area. Emissions produced during the painting process are passed through an extractor fan system which is filtered before discharge to air.

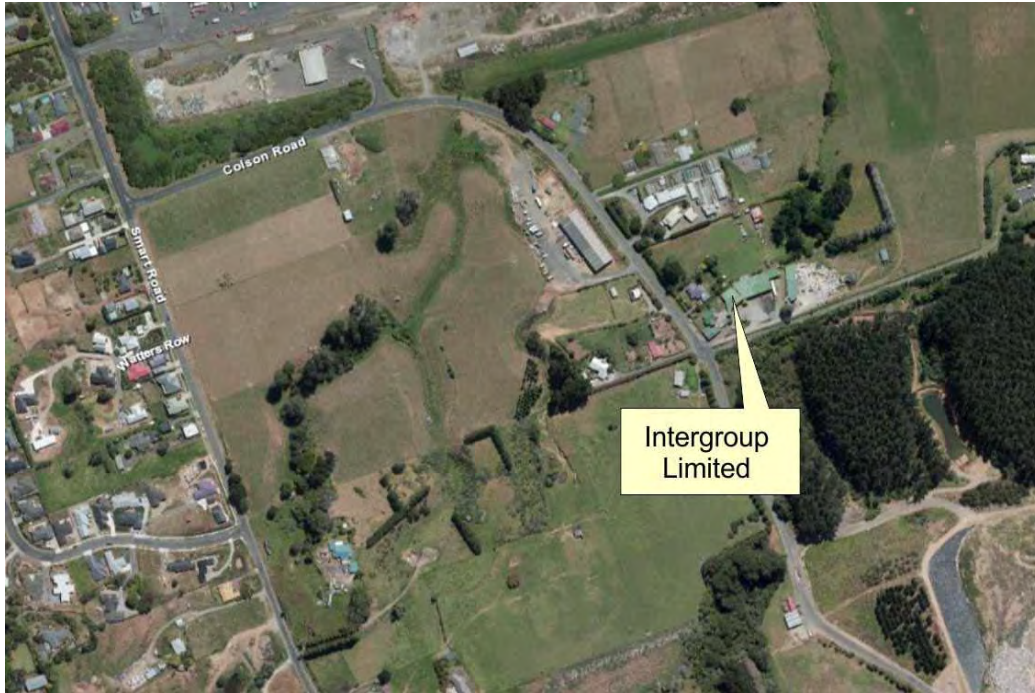


Figure 10 Location of Intergroup Ltd blasting facilities at Colson Road

### 6.1.2 Air discharge permit

Intergroup Ltd holds air discharge permit 7468 to discharge emissions to air from mobile blasting operations and at a permanent facility on Colson Road. The Council originally issued this permit to Indian Blast-Paint Ltd on 6 May 2009 as a resource consent under Section 87(e) of the RMA. The consent was transferred to Intergroup Ltd on 28 July 2016 and is due to expire on 1 June 2020.

Special condition 1 details which conditions relate to the various operations of the consent holder. Special conditions 2 to 8 apply to all operations. Special conditions 9 to 12 apply to operations conducted at the Colson Road facility. Special conditions 13 to 20 apply to operations at any other site than Colson Road.

Special conditions 2 and 7 require the consent holder to adopt the best practicable option to prevent or minimise adverse environmental offsite effects, and to ensure that all operators understand and comply with the conditions of the consent.

Special condition 3 restricts the discharge from causing offensive, objectionable or toxic levels of dust or odour associated with the exercise of the consent.

Special conditions 4 to 6 describe the requirements of the blasting media used, cleaning and maintenance following blasting sessions, and size and deposition rates of the suspended particulate matter.

Special condition 8 provides for review of conditions.

Special conditions 9 and 10 require blasting to be carried out in an enclosed building and for all emissions to be contained and treated.

Special conditions 11 and 12 require the consent holder to prepare and maintain an operation, management and maintenance plan that documents procedures; and to provide monitoring, maintenance and complaints received records to the Council upon request.

Special conditions 13 to 15 details requirements around recording and reporting of locations where mobile blasting is carried out, and other details including duration of blasting and proximity to watercourses, dwellings and properties.

Special condition 16 requires wind direction and strength to be considered during blasting operations.

Special conditions 17 and 18 limit mobile blasting to items that cannot be moved to the Colson Road facility, and require appropriate screening of the item during blasting operations.

Special condition 19 details requirements of notification to affected owners or occupiers within 200m of the blasting activities.

Special condition 20 restricts blasting to land-based operations only, and does not cover the coastal marine area.

This summary of consent conditions may not reflect the full requirements of each condition. The consent conditions in full can be found in the resource consent(s) which is/are appended to this report.

## 6.2 Results

### 6.2.1 Inspections

The site was inspected once on 18 December 2017 in relation to air discharge matters.

#### 18 December 2017

An inspection was carried out in wet weather with light south westerly wind conditions. All consent conditions were compliant at the time, however downwind sampling showed suspended particulate a result of 2.02 mg/m<sup>3</sup>, which was near to the maximum allowable limit of 3.0 mg/m<sup>3</sup>. Blasting operations were planned to be moved to new premises in the near future, at a more suitable, purpose-built facility.

### 6.2.2 Investigations, interventions, and incidents

In the 2017-2018 period, the Council was required to record two incidents in association with Intergroup Ltd's conditions in their air discharge consent or provisions in the Regional Air Quality Plan. Two complaints were received on 16 February 2018 and 18 March 2018 respectively, in relation to dust emanating from a sand blasting operation on Colson Road. Incidents IN-35732 and IN-35851 were raised in response to these complaints.

Council officers followed up with each incident, and a site inspection in March 2018 found no evidence of dust or effects to the complainant's property. No further action was undertaken.

## 6.3 Discussion

### 6.3.1 Discussion of site performance

During the year under review, one inspection was carried out and two complaints were received. No non-compliant odours or dust events discharging beyond the boundary of the property were recorded.

### 6.3.2 Environmental effects of exercise of consent

Particulate emissions can arise from a number of sources, both natural and from human activity for example vegetation pollens, smoke and ash, sea spray, dust from soils and paved surfaces, and manufacturing processes. While extremely fine particles may remain floating in the atmosphere for weeks or months, coarser dusts may settle out within timeframes ranging from a few seconds to minutes.

The potential neighbourhood effects from the activities undertaken on the site in relation air quality also include odours and spray drift on occasion.

No adverse environmental effect were recorded as a result if Intergroup Ltd's activities at this site.

### 6.3.3 Evaluation of performance

A tabular summary of Intergroup Ltd's compliance record for the year under review is set out in Table 12.

Table 12 Summary of performance for consent 7468-1, Intergroup Ltd's discharge of emissions to air

<b>Purpose: To discharge emissions to air from mobile blasting operations throughout the Taranaki region (excluding the Coastal Marine Area) and at a permanent facility.</b>		
<b>Condition requirement</b>	<b>Means of monitoring during period under review</b>	<b>Compliance achieved?</b>
1. Specifies which special conditions apply to which activities	N/A	N/A
<b>All Activities</b>		
2. Adoption of best practicable option to minimise effects on the environment	Inspection and discussion with consent holder	Yes
3. No offensive, objectionable or toxic odour or dust beyond boundary	Inspection and observation when inspecting officer is in the vicinity of the site on other business	Yes – two complaints received but no non-compliances recorded
4. Clearance of blasting material	Inspection	Yes
5. Blasting media has low dust and free silica	Suspended particulate monitoring at inspection and deposition gauging	Yes
6. Limits on suspended particulate matter concentration and deposition	Suspended particulate monitoring at inspection	Yes
7. Compliance of operators with conditions	Inspection	Yes
8. Optional review provision re environmental effects	Next opportunity for review June 2018	N/A
<b>Within the permanent facility</b>		
9. All blasting must be in enclosed facility	Inspection and discussion with consent holder	Yes
10. Treatment of emissions prior to discharge. Limit on emissions from enclosure of 125 mg/m <sup>3</sup>	Inspection and point source suspended particulate monitoring	Yes
11. Consent holder to submit Operation, Management and Maintenance Plan within three months of consent being granted	Plan on file	Yes
12. Availability of information collected for condition 11	Inspection and liaison with consent holder, and accessing information recorded by consent holder	Yes
<b>Mobile operations</b>		



<b>Purpose: To discharge emissions to air from mobile blasting operations throughout the Taranaki region (excluding the Coastal Marine Area) and at a permanent facility.</b>		
<b>Condition requirement</b>	<b>Means of monitoring during period under review</b>	<b>Compliance achieved?</b>
13. Email notification to the Council prior to blasting in close proximity to watercourse	No mobile blasting undertaken	N/A
14. Records of blasting activities	Review of consent holder records. No mobile blasting undertaken	N/A
15. Records as per S.C. 14 made available to Council on request	No mobile blasting undertaken	N/A
16. Minimise off-site emissions	No mobile blasting undertaken	N/A
17. Mobile blasting on unmoveable items only	No mobile blasting undertaken	N/A
18. All items to be appropriate screened during blasting	No mobile blasting undertaken	N/A
19. Notification to affected parties prior to blasting close to boundaries	No mobile blasting undertaken	N/A
Overall assessment of consent compliance and environmental performance in respect of this consent		<b>High</b>
Overall assessment of administrative performance in respect of this consent		<b>High</b>

During the year, Intergroup Ltd demonstrated an overall high level of environmental and administrative performance and compliance with the resource consent, as defined in Section 1.1.5. There was no evidence of any consented activity having adverse environmental effects.

### 6.3.4 Recommendations from the 2016-2017 Annual Report

In the 2016-2017 Annual Report, it was recommended:

1. THAT monitoring of consented activities at Intergroup Ltd in the 2017-2018 year continues at the same level as in 2016-2017.

This recommendation was implemented.

### 6.3.5 Alterations to monitoring programmes for 2018-2019

In designing and implementing the monitoring programmes for air/water discharges in the region, the Council has taken into account:

- the extent of information already made available through monitoring or other means to date;
- its relevance under the RMA;
- the Council's obligations to monitor consented activities and their effects under the RMA;
- the record of administrative and environmental performances of the consent holder; and
- reporting to the regional community.

The Council also takes into account the scope of assessments required at the time of renewal of permits, and the need to maintain a sound understanding of industrial processes within Taranaki exercising resource consents.

It is proposed that for 2018-2019 the monitoring remains unchanged.

It should be noted that the proposed programme represents a reasonable and risk-based level of monitoring for the site(s) in question. The Council reserves the right to subsequently adjust the programme from that initially prepared, should the need arise if potential or actual non-compliance is determined at any time during 2018-2019.

## 6.4 Recommendation

1. THAT monitoring of consented activities at Intergroup Ltd in the 2018-2019 year continues at the same level as in 2017-2018.
2. THAT should there be issues with environmental or administrative performance in 2017-2018, monitoring may be adjusted to reflect any additional investigation or intervention as found necessary.

## 7 Lower Waiwhakaiho area performance

### 7.1 Air related incidents

During the year under review there were two incidents recorded in relation to one of the area's air discharge consent holder, Intergroup Ltd. These incidents were unconfirmed. The environmental performance of all the consent holders in the area varied from good to high.

### 7.2 Deposition gauging

With the transient nature of effects upon air quality a combined monitoring approach in the industrial area in question is a good way of assessing consent holder performance. This approach was continued in this monitoring period as adopted following the recommendations in the 2000-2001 annual reports for dischargers in the area.

The deposition gauges were put in place and retrieved at all sites at the same time, including the Council's state of the environment monitoring (SEM) sites. The gauges for the near-by Colson Road landfill site were also deployed for the same period. The wind direction and speed for each of the sampling periods are shown in Appendix II. These were recorded at the Hillsborough Weather Station, which is in the same area.

#### 7.2.1 Results of deposition gauging

There were six exceedances of the Council's guideline limit out of 32 total gauge deployments assessing the five consent holders covered by this report. The results of the deposition gauging undertaken in the Lower Waiwhakaiho area for the year under review are summarised in Figure 11.

Ravensdown deposition gauges AIR006221, AIR006224 and AIR006226 are also used as the Council's SEM gauges. Accordingly, results from these gauges have been included in the TRC SEM table in Figure 11.

Deposition gauge results from the Colson Road landfill monitoring programme have also been included in Figure 11 to provide context of air quality in the wider Waiwhakaiho area. There were three exceedances of 12 total gauge deployments for the Colson Road landfill programme in the year under review. Colson Road landfill deposition gauges AIR001612 and AIR001615 are also used as SEM gauges. Accordingly, results from these gauges have been included in the TRC SEM table in Figure 11.

Results from the SEM gauges deployed in the Lower Waiwhakaiho area have also been included in Figure 11 to provide context of air quality in the wider Waiwhakaiho area. Additionally, some of these gauges are also incorporated in compliance monitoring programmes, as outlined previously. None of the 12 total SEM gauges exceeded the Council's guideline limit in the period under review.

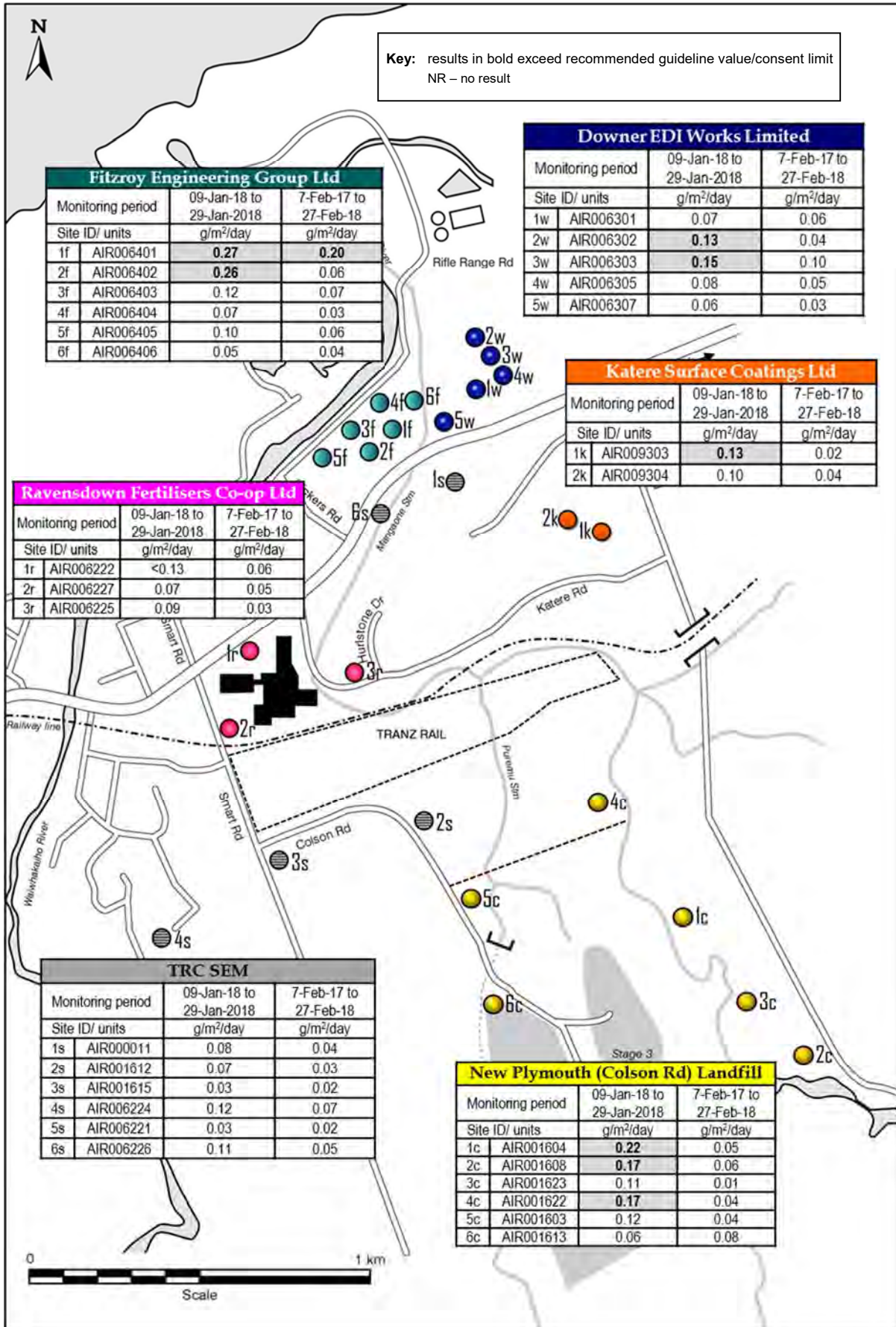


Figure 11 Dust deposition for the Lower Waiwhakaiho area in the 2017-2018 monitoring period

## 7.3 Discussion

### 7.3.1 Environmental effects of exercise of air discharge permits

Ambient air quality (SEM sites) in the Lower Waiwhakaiho area during the year under review was good.

The overall air quality in the Lower Waiwhakaiho area, including deposition survey results for the five consent holders covered in this report, was generally good during both the January and February gauging periods.

#### January 2018 deposition gauge survey

In the case of the January survey, five of 16 (31 %) of the gauges analysed were in excess of the guideline value. As with previous years, the higher particulate deposition rates were again found to be at monitoring locations in close proximity to industrial sites. The highest results were found at monitoring locations near the Fitzroy Engineering, Downer EDI, and Katere Surface Coatings sites, however the results at the last two sites were at or just above the guideline value. Three exceedances were also found in the vicinity of the Colson Road landfill. Wind direction was variable during the gauging period, with winds predominantly from the west for 22% of the time, and from the north for 21% of the time. The strongest winds were from the north.

#### February 2018 deposition gauge survey

In the case of the February survey, one of 16 (6.2%) of the gauges returned results that were in excess of the guideline value. On this occasion the exceedance was again predominantly at monitoring sites located close to the industrial sites, in the vicinity of the Fitzroy Engineering sites. The prevailing wind directions observed during this gauging period were from the west (28 % of the time) and the south west to south east (13 % and 14 % respectively), with the strongest winds from the west.

## 8 Summary of recommendations

1. THAT monitoring of consented activities at the Downer EDI Works Ltd site in the 2018-2019 year continues at the same level as in 2017-2018.
2. THAT monitoring of consented activities at the Fitzroy Engineering Group Ltd site in the 2018-2019 year continues at the same level as in 2017-2018.
3. THAT monitoring of consented activities of Katere Surface Coatings in the 2018-2019 year continues at the same level as in 2017-2018.
4. THAT monitoring of consented activities at Ravensdown Fertiliser Co-operative Ltd in the 2018-2019 year continues at the same level as in 2017-2018.
5. THAT monitoring of consented activities at the Intergroup Ltd site in the 2018-2019 year continues at the same level as in 2017-2018.
6. THAT should there be issues with environmental or administrative performance in 2017-2018, monitoring may be adjusted to reflect any additional investigation or intervention as found necessary.

## Glossary of common terms and abbreviations

The following abbreviations and terms may be used within this report:

Conductivity	Conductivity, an indication of the level of dissolved salts in a sample, usually measured at 20°C and expressed in mS/m.
DRP	Dissolved reactive phosphorus.
g/m <sup>3</sup>	Grams per cubic metre, and equivalent to milligrams per litre (mg/L). In water, this is also equivalent to parts per million (ppm), but the same does not apply to gaseous mixtures.
Incident	An event that is alleged or is found to have occurred that may have actual or potential environmental consequences or may involve non-compliance with a consent or rule in a regional plan. Registration of an incident by the Council does not automatically mean such an outcome had actually occurred.
Incident register	The incident register contains a list of events recorded by the Council on the basis that they may have the potential or actual environmental consequences that may represent a breach of a consent or provision in a Regional Plan.
Investigation	Action taken by the Council to establish what were the circumstances/events surrounding an incident including any allegations of an incident.
l/s	Litres per second.
mS/m	Millisiemens per metre.
NO <sub>x</sub>	Oxides of nitrogen.
Physicochemical	Measurement of both physical properties (e.g. temperature, clarity, density) and chemical determinants (e.g. metals and nutrients) to characterise the state of an environment.
PM <sub>10</sub>	Relatively fine airborne particles (less than 10 micrometre diameter).
QPR	Quality Pavement Repair - a high performance permanent repair material for repairing potholes, filling utility cuts and repairing damaged asphalt.
Resource consent	Refer Section 87 of the RMA. Resource consents include land use consents (refer Sections 9 and 13 of the RMA), coastal permits (Sections 12, 14 and 15), water permits (Section 14) and discharge permits (Section 15).
RMA	<i>Resource Management Act</i> 1991 and including all subsequent amendments.
Temp	Temperature, measured in °C (degrees Celsius).

For further information on analytical methods, contact the Council's laboratory.

## Bibliography and references

- Taranaki Regional Council (2017): *Lower Waiwhakaiho Air Discharges Compliance Monitoring Programme Annual Report 2016-2017*. Technical Report 2017-87.
- Taranaki Regional Council (2016): *Lower Waiwhakaiho Air Discharges Compliance Monitoring Programme Annual Report 2015-2016*. Technical Report 2016-12.
- Taranaki Regional Council (2015): *Lower Waiwhakaiho Air Discharges Compliance Monitoring Programme Annual Report 2014-2015*. Technical Report 2015-120.
- Taranaki Regional Council (2014): *Waiwhakaiho Airshed area Monitoring Programme Annual Report 2013-2014*. Technical Report 2014-55.
- Taranaki Regional Council (2013): *Waiwhakaiho Airshed area Monitoring Programme Annual Report 2012-2013*. Technical Report 2013-69.
- Taranaki Regional Council (2012): *Waiwhakaiho Airshed area Monitoring Programme Annual Report 2011-2012*. Technical Report 2012-13.
- Taranaki Regional Council (2012): *Waiwhakaiho Airshed area Monitoring Programme Annual Report 2010-2011*. Technical Report 2011-88.
- Taranaki Regional Council (2010): *Waiwhakaiho Airshed area Monitoring Programme Annual Report 2009-2010*. Technical Report 2010-25.
- Taranaki Regional Council (2009): *Waiwhakaiho Airshed area Monitoring Programme Annual Report 2008-2009*. Technical Report 2009-80.
- Taranaki Regional Council (2008): *Waiwhakaiho Airshed area Monitoring Programme Annual Report 2007-2008*. Technical Report 2008-63.
- Taranaki Regional Council (2008): *Waiwhakaiho Airshed area Monitoring Programme Annual Report 2006-2007*. Technical Report 2007-109.
- Taranaki Regional Council (2006): *Waiwhakaiho Airshed area Monitoring Programme Annual Report 2005-2006*. Technical Report 2006-107.
- Taranaki Regional Council (2005): *Waiwhakaiho Airshed area Monitoring Programme Annual Report 2004-2005*. Technical Report 2005-46.
- Taranaki Regional Council (2004): *Waiwhakaiho Airshed area Monitoring Programme Annual Report 2003-2004*. Technical Report 2004-46.
- Taranaki Regional Council (2003): *Waiwhakaiho Airshed area Monitoring Programme Annual Report 2002-2003*. Technical Report 2003-47.
- Taranaki Regional Council (2002): *Waiwhakaiho Air Monitoring Programmes (Fitzroy Engineering Group Ltd, PCL Industries Ltd, Ravensdown Fertiliser Co-operative Ltd, Works Infrastructure Ltd, Clelands Timber Ltd, and Vinsen GM Ltd) Annual Report 2001-2002*. Technical report 2002-56.
- Taranaki Regional Council (2001): *Waiwhakaiho Air Monitoring Programmes (Fitzroy Engineering Group Ltd, PCL Ltd, Ravensdown Fertiliser Co-op Ltd, and Works Infrastructure Ltd) Annual Report 2000-2001*. Technical report 2001-30.
- Taranaki Regional Council (2000): *Works Civil Construction Air Monitoring Programme Annual Report 1999-2000*. Technical Report 99-53.
- Taranaki Regional Council (2000): *Ravensdown Fertiliser Ltd Air Monitoring Programme Annual Report 1999-2000*. Technical Report 2000-61.



- Taranaki Regional Council (2000): *Poultrymen's Co-operative Ltd Monitoring Programme Annual Report 1999-2000*. Technical Report 2000-47.
- Taranaki Regional Council (2000): *G M Vinsen Ltd Monitoring Programme Annual Report 2000-2001*. Technical report 2001-74.
- Taranaki Regional Council (2000): *Fitzroy Engineering Group Ltd Air Monitoring Programme Annual Report 1999-2000*. Technical report 2000-74.
- Taranaki Regional Council (1999): *Works Civil Construction Air Monitoring Programme Annual Report 1998-99*. Technical Report 99-71.
- Taranaki Regional Council (1999): *Ravensdown Fertiliser Ltd Air Monitoring Programme Annual Report 1998-99*. Technical Report 99-73.
- Taranaki Regional Council (1999): *Poultrymen's Co-operative Ltd Monitoring Programme Annual Report 1998-99*. Technical Report 99-27.
- Taranaki Regional Council (1999): *Fitzroy Engineering Group Ltd Air Monitoring Programme Annual Report 1998-99*. Technical report 99-93.
- Taranaki Regional Council (1998): *Technic Taranaki Air Monitoring Programme Annual Report 1997-98*. Technical Report 98-31.
- Taranaki Regional Council (1998): *Ravensdown Fertiliser Ltd Air Monitoring Programme Annual Report 1997-98*. Technical Report 98-96.
- Taranaki Regional Council (1998): *Poultrymen's Co-operative Ltd Air Monitoring Programme Annual Report 1997-98*. Technical Report 98-71.
- Taranaki Regional Council (1998): *Fitzroy Engineering Group Ltd Air Monitoring Programme Annual Report 1997-98*. Technical report 98-91.
- Taranaki Regional Council (1997): *Regional Air Quality Plan*.
- Taranaki Regional Council (1997): *Technic Taranaki Air Monitoring Programme Annual Report 1996-97*. Technical Report 97-66.
- Taranaki Regional Council (1997): *Poultrymen's Co-operative Ltd Air Monitoring Programme Annual Report 1996-97*. Technical Report 97-31.
- Taranaki Regional Council (1997): *Fitzroy Engineering Group Ltd Air Monitoring Programme Annual Report 1996-97*. Technical report 97-60.
- Taranaki Regional Council (1997): *Farmer Fertiliser Ltd Air Monitoring Programme Annual Report 1996-97*. Technical Report 97-49.
- Taranaki Regional Council (1996): *Technic Industries Ltd Air Monitoring Programme Annual Report 1995-96*. Technical Report 96-24.
- Taranaki Regional Council (1996): *Poultrymen's Co-operative Ltd Air Monitoring Programme Annual Report 1995-96*. Technical Report 96-47.
- Taranaki Regional Council (1996): *Fitzroy Engineering Group Ltd Air Monitoring Programme Annual Report 1995-96*. Technical report 96-53.
- Taranaki Regional Council (1996): *Farmer Fertiliser Ltd Air Monitoring Programme Annual Report 1995-96*. Technical Report 96-29.
- Taranaki Regional Council (1995): *Technic Industries Ltd Air Monitoring Programme Annual Report 1994-95*. Technical Report 95-56.

- Taranaki Regional Council (1995): *Poultrymen's Co-operative Ltd 1994-95 Annual Report 1994-95*. Technical Report 95-40.
- Taranaki Regional Council (1995): *Fitzroy Engineering Group Ltd Air Monitoring Programme Annual Report 1994-95*. Technical report 95-59.
- Taranaki Regional Council (1995): *Farmers Fertiliser Ltd Air Monitoring Programme Annual Report 1994-95*. Technical Report 95-32.
- Taranaki Regional Council (1994): *Technic Industries Ltd Air Monitoring Programme Annual Report 1993-94*. Technical Report 94-33.
- Taranaki Regional Council (1994): *Poultrymen's Co-operative Ltd Air Monitoring Programme Annual Report 1993-94*. Technical Report 94-21.
- Taranaki Regional Council (1994): *Fitzroy Engineering Group Ltd Air Monitoring Programme Annual Report 1993-94*. Technical report 94-24.
- Taranaki Regional Council (1994): *Farmers Fertiliser Ltd Air Monitoring Programme Annual Report 1993-94*. Technical Report 94-62.
- Taranaki Regional Council (1993): *Technic Industries Ltd Air Monitoring Programme Annual Report 1992-93*. Technical Report 93-36.
- Taranaki Regional Council (1993): *Poultrymen's Co-operative Ltd Air Monitoring Programme Annual Report 1992-93*. Technical Report 93-38.
- Taranaki Regional Council (1993): *Farmers Fertiliser Ltd Air Monitoring Programme Annual Report 1992-93*. Technical Report 93-42.

## Appendix I

# Resource consents for discharges to air held by industries in the Lower Waiwhakaiho area (alphabetical order)

(For a copy of the signed resource consent  
please contact the TRC Consents department)



**Discharge Permit**  
**Pursuant to the Resource Management Act 1991**  
**a resource consent is hereby granted by the**  
**Taranaki Regional Council**

Name of  
Consent Holder: Ravensdown Limited  
PO Box 1049  
Christchurch 8140

Decision Date: 4 December 2008

Commencement Date: 4 December 2008

**Conditions of Consent**

Consent Granted: To discharge emissions into the air from the storage,  
blending and distribution of fertiliser

Expiry Date: 1 June 2026

Review Date(s): June 2020 and/or within six months of receiving notification  
in relation to condition 8

Site Location: Smart Road, New Plymouth

Legal Description: Lot 2 DP 339878 Sec 18 Pt Secs 142, 143, 166 & 175 Pt  
Sbdn of Sec 162 Hua Dist Blk VI Paritutu SD

Grid Reference (NZTM) 1696333E-5677008N

*For General, Standard and Special conditions  
pertaining to this consent please see reverse side of this document*

### General conditions

- a) On receipt of a requirement from the Chief Executive, Taranaki Regional Council the consent holder shall, within the time specified in the requirement, supply the information required relating to the exercise of this consent.
- b) Unless it is otherwise specified in the conditions of this consent, compliance with any monitoring requirement imposed by this consent must be at the consent holder's own expense.
- c) The consent holder shall pay to the Council all required administrative charges fixed by the Council pursuant to section 36 in relation to:
  - i) the administration, monitoring and supervision of this consent; and
  - ii) charges authorised by regulations.

### Special conditions

1. Notwithstanding any other condition, the consent holder shall at all times adopt the best practicable option, as defined in section 2 of the Resource Management Act 1991, to prevent or minimise any adverse effects on the environment from the exercise of this consent.
2. All activities permitted by this consent are to be conducted taking into account wind direction and wind strength, such that off-site emissions are kept to a practicable minimum.
3. The suspended particulate matter shall not exceed  $3 \text{ mg/m}^3$  [measured under ambient conditions], and the deposition of dust shall not exceed  $0.13 \text{ g/m}^2/\text{day}$  or  $4.0 \text{ g/m}^2/30 \text{ days}$  beyond the property boundary.
4. Notwithstanding condition 3, any discharge to air from the exercise of this consent shall not give rise to any offensive, objectionable or toxic levels of dust or odour at or beyond the boundary of the property.
5. To avoid re-suspension of dust and stormwater contamination, any fertiliser spilt outside the buildings shall be cleaned up as soon as is practicable and in any case, by the end of each working day.
6. As far as is practicable, all intake, blending and dispatch of fertiliser shall be carried out within buildings that are maintained to prevent or minimise any discharges to the environment from the exercise of this consent.
7. The consent holder shall keep, and make available to the Chief Executive, Taranaki Regional Council, upon request, a record of the time, duration and cause of all dust incidents having actual or potential off-site impacts.

8. The consent holder shall notify the Chief Executive, Taranaki Regional Council, prior to making any changes to the activities at the site, which could adversely alter the nature of the discharge. Any such change shall then only occur following receipt of any necessary approval under the Resource Management Act. Notification shall include the consent number, a brief description of the activity consented and an assessment of the environmental effects of any changes, and be emailed to [worknotification@trc.govt.nz](mailto:worknotification@trc.govt.nz). Notification by fax or post is acceptable if the consent holder does not have access to email.
9. If potentially odorous products are to be received at the site that were not specified in application 5015, then the consent holder shall notify the Chief Executive, Taranaki Regional Council in accordance with condition 8 and shall in addition provide an odour management plan to the satisfaction of Chief Executive, Taranaki Regional Council, detailing how the product will be handled at the site.
10. The Taranaki Regional Council may review any or all of the conditions of this consent by giving notice of review during the month of June 2014 and/or June 2020 and/or within 6 months of receiving notification in relation to condition 8 for the purpose of:
  - a) adding, amending or deleting any limit on discharge or ambient concentrations of any contaminant or contaminants; and/or
  - b) requiring the consent holder to adopt the best practicable option to remove or reduce any adverse effect on the environment caused by any discharge to the environment; and/or
  - c) ensuring that the conditions are adequate to deal with any adverse effects of the discharge on the environment arising from the exercise of this consent which were not foreseen at the time the application was considered or which it was not appropriate to deal with at the time.

Transferred at Stratford on 2 December 2015

For and on behalf of  
Taranaki Regional Council

---

A D McLay  
**Director - Resource Management**





**Discharge Permit**  
**Pursuant to the Resource Management Act 1991**  
**a resource consent is hereby granted by the**  
**Taranaki Regional Council**

Name of  
Consent Holder: Fitzroy Engineering Group Limited  
Private Bag 2053  
New Plymouth 4342

Decision Date  
(Change): 23 June 2016

Commencement Date  
(Change): 23 June 2016 (Granted Date: 21 November 2006)

**Conditions of Consent**

Consent Granted: To discharge emissions into the air from abrasive blasting operations and associated activities at the Fitzroy Engineering Group Limited factory site and from yard blasting operations and at mobile abrasive blasting at various locations throughout the Taranaki region

Expiry Date: 1 June 2020

Site Location: Rifle Range Road, New Plymouth (Permanent site) &  
Various locations throughout the Taranaki region (Mobile)

Grid Reference (NZTM) 16966302E-5677760N (Permanent site)  
Various locations throughout the Taranaki region (Mobile)

*For General, Standard and Special conditions  
pertaining to this consent please see reverse side of this document*

## Consent 4025-3.2

### General conditions

- a) On receipt of a requirement from the Chief Executive, Taranaki Regional Council the consent holder shall, within the time specified in the requirement, supply the information required relating to the exercise of this consent.
- b) Unless it is otherwise specified in the conditions of this consent, compliance with any monitoring requirement imposed by this consent must be at the consent holder's own expense.
- c) The consent holder shall pay to the Council all required administrative charges fixed by the Council pursuant to section 36 in relation to:
  - i) the administration, monitoring and supervision of this consent; and
  - ii) charges authorised by regulations.

### Special conditions

#### All operations

1. The consent holder shall at all times adopt the best practicable option, as defined in section 2 of the Resource Management Act 1991, to prevent or minimise any adverse effects on the environment.
2. The exercise of this consent shall be undertaken in general accordance with the information provided in support of the original application for this consent and with any subsequent application to change consent conditions, particularly, the '*Feasibility of Emissions Testing*' assessment report prepared by *JCL Air and Environment Limited*, and dated 5 October 2015.

In the case of any contradiction between applications the later application shall prevail, and where there is conflict between an application and the conditions of this consent, the conditions of this consent shall prevail.

3. Sand used for dry blasting must contain less than 5% by dry weight free silica, and less than 2% by dry weight dust able to pass a 0.15 mm sieve.
4. Any discharge to air from the exercise of this consent shall not give rise to any offensive, objectionable or toxic levels of dust or odour at or beyond the boundary of the property on which the abrasive blasting or associated activity is occurring, and in the case of blasting undertaken at the Rifle Range Road site, suspended particulate matter shall not exceed 3 mg/m<sup>3</sup> (measured under ambient conditions) beyond the boundary of the site.
5. All abrasive blasting is to be conducted with taking into account wind direction and wind strength, such that off-site emissions are kept to a practicable minimum.
6. As far as is practicable, work areas and surrounding areas shall be cleared of accumulations of sand and any other blasting material at the end of each blasting session and by the end of each working day.

## Consent 4025-3.2

7. Dry sand blasting shall be used only when specified by a client. High pressure water blasting, wet sand blasting, garnet blasting, vacuum blasting or an equivalent alternative process must be used when practicable.
8. The discharge of particulate material from the site shall not raise the particulate deposition rate at or beyond the boundary of the leased site of the permanent facility at Rifle Range Road, New Plymouth, above a mean daily rate of 0.13 g/m<sup>2</sup>/day collected over a minimum of 21 days.
9. The consent holder shall ensure that all operators of abrasive blasting equipment understand and comply with the all the conditions of this consent prior to the commencement of any work for which this consent is required.

### **Operations conducted within permanent facilities**

10. As far as is practicable, all abrasive blasting on the consent holder's permanent site at Rifle Range Road, New Plymouth, shall be carried out in an enclosed booth or shed.
11. All emissions from abrasive blasting, surface preparation or surface coating operations and all other associated emissions from abrasive blasting at the permanent site at Rifle Range Road, New Plymouth, shall be contained and treated, as far as is practicable, prior to discharge from any operations enclosure.
12. Within a month of the granting of this consent, the consent holder shall updated and thereafter maintain, to the satisfaction of the Chief Executive, Taranaki Regional Council, an Operation, Management and Maintenance Plan (OMMP) detailing the Company's procedures, including but not limited to staff training, general housekeeping and yard maintenance, blasting operations, monitoring and maintenance of the blasting buildings and air discharge treatment systems, the recording of training, monitoring and maintenance undertaken, the recording of complaints made directly to the Company, and the frequency of review of the plan. This reviewed OMMP shall include particular reference to the new garnet blasting plant fabric treatment system installed at the site.
13. The consent will be exercised in accordance with the procedures set out in the operation and management plan, and the consent holder shall subsequently adhere to and comply with the procedures, requirements, obligations and all other matters specified in the operation and management plan, except by specific agreement of the Chief Executive, Taranaki Regional Council. In the case of any contradiction between the operation and management plan and the conditions of this resource consent, the conditions of this resource consent shall prevail.
14. The monitoring, maintenance and complaints records required by special condition 12 shall be made available to the Chief Executive, Taranaki Regional Council upon request.
15. If the management practices for the control of windblown dust from the yard areas is not implemented within one month of the approval of the management plan, or is not effective at controlling windblown dust such that compliance with special conditions 4 and 8 is achieved, then special condition 16 shall apply.

## Consent 4025-3.2

16. Subject to special condition 15, the yard and any roadways in the yard shall be sealed, maintained and cleaned to minimise windblown dust to the satisfaction of the Chief Executive, Taranaki Regional Council.
17. The consent holder shall notify the Chief Executive, Taranaki Regional Council, not less than 24 hours and not more than 7 days prior to using more than three blasting nozzles simultaneously in the "garnet shed".
18. The consent holder shall notify the Chief Executive, Taranaki Regional Council in writing at least 24 hours and not more than 7 days prior to operation of the grit room.
19. The final discharge after any pre-treatment at the permanent site at Rifle Range Road, New Plymouth, shall not contain lead (Pb) or Pb components at a concentration greater than 0.7 milligrams per cubic metre as Pb, chromium (Cr) or Cr compounds at a concentration of 1.5 milligrams per cubic metre as Cr, or zinc (Zn) or Zn compounds at a concentration of 15 milligrams per cubic metre as Zn (discharge corrected to 0 degrees Celsius and dry gas), at any time.

### **Yard operations**

20. From time to time the consent holder may receive for abrasive blasting or other surface treatment, an item that because of its bulk, weight, or other factor, cannot be treated inside the appropriate enclosed facility. Such yard operations shall not be permitted on a frequent or continual basis, other than with the written approval of the Chief Executive, Taranaki Regional Council.
21. All items which cannot be treated within properly enclosed facilities shall be screened by means of covers, tarpaulins, cladding or other means, as completely as practicable, to contain dust emissions and depositions and to restrict the spread of all blasting debris.

### **Mobile operations**

22. All items or premises to be blasted from a mobile blasting unit shall be screened by means of covers, tarpaulins, cladding, or other means, as completely as practicable, to contain dust emissions and depositions and to restrict the spread of all blasting debris and materials to the satisfaction of the Chief Executive, Taranaki Regional Council.
23. Where abrasive blasting or surface coating from a mobile blasting unit is to take place within 100 metres of a watercourse, the consent holder shall notify the Chief Executive, Taranaki Regional Council, not more than 7 days and not less than 48 hours prior to any operation commencing. The Chief Executive, Taranaki Regional Council, may require additional measures to prevent, minimise or mitigate any potential for adverse environmental effects. The consent holder shall ascertain such measures prior to commencing an abrasive blasting operation, and comply with any and all such measures at all times.

## Consent 4025-3.2

24. The discharge shall not give rise to any of the following effects in any surface watercourse:
- a) the production of any conspicuous oil or grease films, scums or foams, or floatable or suspended materials;
  - b) any conspicuous change in the colour or visual clarity;
  - c) any emission of objectionable odour;
  - d) the rendering of fresh water unsuitable for consumption by farm animals;
  - e) any significant adverse effects on aquatic life;
  - f) an increase in suspended solids of more than 10 grams per cubic metre;
  - g) turbidity above 4 nephelometric turbidity units (NTU), except that if the turbidity within the water body is above 3.2 NTU, no more than 25% increase in NTU;
  - h) any increase in the concentration of zinc, lead, arsenic, chromium or thorium-based products.
25. Dry abrasive blasting from a mobile blasting unit shall not be conducted within 200 metres of any dwelling place or property boundary until either public notice or individual notice to the owners or occupiers of those dwellings or properties has been given.
26. The suspended particulate matter shall not exceed 3 mg/m<sup>3</sup> (measured under ambient conditions), and the deposition of dust shall not exceed a mean daily rate of 0.13 g/m<sup>2</sup>/day beyond the property boundary or beyond 50 metres of the discharge when sited on public amenity areas, whichever is less.

Signed at Stratford on 23 June 2016

For and on behalf of  
Taranaki Regional Council

---

A D McLay  
**Director - Resource Management**



**Discharge Permit**  
**Pursuant to the Resource Management Act 1991**  
**a resource consent is hereby granted by the**  
**Taranaki Regional Council**

Name of  
Consent Holder: Downer NZ Limited  
PO Box 272  
New Plymouth 4340

Decision Date  
(Change): 22 June 2016

Commencement Date  
(Change): 22 June 2016 (Granted Date: 29 March 2005)

**Conditions of Consent**

Consent Granted: To discharge emissions into the air from the manufacture of hot mix asphalt paving mixes and associated activities

Expiry Date: 1 June 2020

Site Location: Rifle Range Road, Waiwhakaiho

Grid Reference (NZTM) 1696850E-5677930N

*For General, Standard and Special conditions  
pertaining to this consent please see reverse side of this document*

### **General conditions**

- a) On receipt of a requirement from the Chief Executive, Taranaki Regional Council the consent holder shall, within the time specified in the requirement, supply the information required relating to the exercise of this consent.
- b) Unless it is otherwise specified in the conditions of this consent, compliance with any monitoring requirement imposed by this consent must be at the consent holder's own expense.
- c) The consent holder shall pay to the Council all required administrative charges fixed by the Council pursuant to section 36 in relation to:
  - i) the administration, monitoring and supervision of this consent; and
  - ii) charges authorised by regulations.

### **Special conditions**

1. This consent shall be exercised generally in accordance with the information submitted in support of application 3225 and to ensure the conditions of this consent are maintained. Where there is any conflict between the information supplied in support of application 3225 and the conditions of this consent, the conditions of this consent shall prevail.
2. The consent holder shall adopt the best practicable option, as defined in section 2 of the Resource Management Act 1991, to prevent or minimise any actual or likely adverse effects on the environment arising from the exercise of this consent.
3. Prior to undertaking any alterations to the plant, processes or operations, which in the opinion of the Chief Executive, Taranaki Regional Council, may significantly change the nature or quantity of contaminants emitted from the site, the consent holder shall gain the approval of the Chief Executive, Taranaki Regional Council, and shall obtain any necessary approvals under the Resource Management Act, 1991.
4. Recycled asphalt shall not be processed at the site. This does not prohibit the consent holder from seeking approval for this purpose at a later date as described in special condition 3.
5. The drum burner shall be maintained by a trained service person at least every six months to optimise combustion efficiency and to reduce noxious emissions to air.
6. The consent holder shall not operate the asphalt plant using waste oil. This does not prohibit the consent holder from seeking approval for this purpose at a later date as described in special condition 3.
7. The asphalt plant shall not be operated on any fuel containing more than 0.3% sulphur (weight/weight basis).



## Consent 4060-4.1

8. All gas streams ventilated or otherwise discharged from the asphalt plant shall be treated to reduce the concentration of total particulate matter to less than 125 milligrams per cubic metre, normal temperature and pressure, at any time.
9. The consent holder shall have an emission test conducted on discharges from the asphalt plant stack to demonstrate compliance with special condition 8. This test shall;
  - a) be undertaken on one occasion between 1 June 2016 and 1 June 2020, and
  - b) comprise not less than three separate samples taken during production conditions that give rise to maximum emissions from the asphalt plant stack, andbe reported to the Chief Executive, Taranaki Regional Council, within 20 working days of the samples being taken. The report shall include the results of the tests, the relevant operating parameters including pressure drop over the scrubber and the production rate over the period of each test, all the raw data and all the calculations”
10. The emissions tests shall be carried out in accordance with Australian Standard 4323.2-1995, or any other equivalent method subject to the written approval of the Chief Executive, Taranaki Regional Council, and these tests shall be performed to the satisfaction of the Chief Executive, Taranaki Regional Council.
11. The discharge of particulate material from the site shall not raise the particulate deposition rate at or beyond the site boundary, above 4 grams per square metre per 30 days or 0.13 grams per square metre per day.
12. Any discharge to air from the exercise of this consent shall not give rise to any offensive or objectionable odour at or beyond the boundary of the property.
13. For the purposes of condition 12, without restriction, an odour shall be deemed to be offensive or objectionable if:
  - a) it is held to be so in the opinion of an enforcement officer of the Taranaki Regional Council, having regard to the duration, frequency, intensity and nature of the odour; and/or
  - b) an officer of the Taranaki Regional Council observes that an odour is noticeable, and either it lasts longer than three (3) hours continuously, or it occurs frequently during a single period of more than six (6) hours; and/or
  - c) no less than three individuals from at least two different properties, each declare in writing that an objectionable or offensive odour was detected beyond the boundary of the site, provided the Council is satisfied that the declarations are not vexatious and that the objectionable or offensive odour was emitted from the site as specified in (b). Each declaration shall include the individuals’ names and addresses, the date and time the objectionable or offensive odour was detected, the location of the individual when it was detected and the prevailing weather conditions during the event. The declarations shall be signed and dated.

## Consent 4060-4.1

14. The discharge of suspended particulate matter from the site shall not increase the ambient concentration of suspended particulate matter by more than 3 milligrams per cubic metre (measured under ambient conditions), determined by measurements at the upwind and downwind boundaries of the property.
15. The discharge must not result in noxious, toxic levels, or dangerous levels of airborne contaminants at or beyond the boundary of the property, including but not limited to any risk of fire or explosion.
16. The consent holder shall control all emissions to the atmosphere from the site, so as to ensure that the maximum ground level concentration of nitrogen dioxide measured under ambient conditions does not exceed 200 micrograms per cubic metre (one-hour average) with 99.9 percentile compliance across all monitoring data, up to a maximum limit of 300 micrograms per cubic metre (one-hour average), or 100 micrograms per cubic metre (twenty-four hour average), at or beyond the boundary of the site.
17. The consent holder shall control all emissions to the atmosphere from the site, so as to ensure that the maximum ground level concentration of sulphur dioxide measured under ambient conditions does not exceed 350 micrograms per cubic metre (one-hour average) with 99.9 percentile compliance across all monitoring data, up to a maximum limit of 570 micrograms per cubic metre (one-hour average), or 120 micrograms per cubic metre (twenty-four hour average), at or beyond the boundary of the site.
18. Stockpiles of aggregate and crusher dust liable to produce windblown dust shall be treated, or shielded to minimise dust emissions to the satisfaction of the Chief Executive, Taranaki Regional Council.
19. The yard and any roadways in the yard shall be sealed, maintained, and cleaned to minimise windblown dust to the satisfaction of the Chief Executive, Taranaki Regional Council.
20. Any smoke discharged from the site shall not occur for longer than a total of three minutes in any sixty minute period.
21. All equipment used to avoid, remedy, or mitigate any effect on the environment from the discharge of emissions into the air shall be maintained in optimum condition and shall be operated within optimum design parameters at all times the plant is in operation, to the satisfaction of the Chief Executive, Taranaki Regional Council.
22. The consent holder shall visually inspect the water scrubber and settling pond at least once per month, and maintain as necessary to avoid, remedy or mitigate discharges to air.

## Consent 4060-4.1

23. The consent holder shall maintain a log, recording:
  - a) dates when the scrubber was inspected and any maintenance undertaken;
  - b) dates when the settling pond was inspected and any maintenance undertaken;
  - c) dates of burner maintenance; and
  - d) complaints received including name and address of complainants, date received and any remedial action in response to the complaint.
24. The log required in terms of special condition 23 shall be made available to the Chief Executive, Taranaki Regional Council upon request.
25. Air temperatures in the hot mix drum shall not exceed 200 degrees Celsius. The drum shall have an audible temperature alarm which shall sound if at any time the drum temperature exceeds 200 degrees Celsius and corrective action shall be taken. All incidents of temperature exceedance must be recorded in the log required in terms of special condition 23.

Signed at Stratford on 22 June 2016

For and on behalf of  
Taranaki Regional Council

---

A D McLay  
**Director - Resource Management**



**Discharge Permit**  
**Pursuant to the Resource Management Act 1991**  
**a resource consent is hereby granted by the**  
**Taranaki Regional Council**

Name of  
Consent Holder:           Katere Surface Coatings Limited  
                                  P O Box 3258  
                                  Fitzroy  
                                  NEW PLYMOUTH

Consent Granted           18 February 2009  
Date:

**Conditions of Consent**

Consent Granted:        To discharge emissions to air from abrasive blasting and  
                                  surface coating activities at a permanent site located at  
                                  Katere Road, New Plymouth at or about (NZTM)  
                                  1697260E-5677411N and from mobile operations  
                                  throughout the Taranaki region including within the Coastal  
                                  Marine Area at Port Taranaki

Expiry Date:             1 June 2020

Review Date(s):         June 2014

Site Location:           Katere Road, New Plymouth & Various locations  
                                  throughout the Taranaki region

Legal Description:      Lot 2 DP 16705 & Various locations throughout the  
                                  Taranaki region

### **General conditions**

- a) On receipt of a requirement from the Chief Executive, Taranaki Regional Council the consent holder shall, within the time specified in the requirement, supply the information required relating to the exercise of this consent.
- b) Unless it is otherwise specified in the conditions of this consent, compliance with any monitoring requirement imposed by this consent must be at the consent holder's own expense.
- c) The consent holder shall pay to the Council all required administrative charges fixed by the Council pursuant to section 36 in relation to:
  - i) the administration, monitoring and supervision of this consent; and
  - ii) charges authorised by regulations.

### **Special conditions**

1. The conditions of this consent shall apply to the various operations of the consent holder as follows;
  - Special Conditions 2-8, 20, and 21 apply to all operations.
  - Special Conditions 9-11 apply to operations conducted within the permanent facility at Katere Road, New Plymouth.
  - Special Conditions 12-14 apply to yard operations conducted at the permanent facility at Katere Road, New Plymouth.
  - Special Conditions 15-19 apply to operations conducted at any site other than the permanent facility at Katere Road, New Plymouth.

### **All operations**

2. The consent holder shall at all times adopt the best practicable option, as defined in section 2 of the Resource Management Act 1991, to prevent or minimise any adverse effects on the environment from the exercise of this consent.
3. Any discharge to air from the exercise of this consent shall not give rise to any offensive, objectionable or toxic levels of dust or odour at or beyond the boundary of the property on which the abrasive blasting or associated activity is occurring.
4. All abrasive blasting is to be conducted taking into account wind direction and wind strength, such that off-site emissions are kept to a practicable minimum.

## Consent 4475-2

5. As far as is practicable, work areas and surrounding areas shall be cleared of accumulations of blasting material at the end of each blasting session and by the end of each working day.
6. Sand used for dry abrasive blasting shall contain:
  - (i) less than 5% by dry weight free silica; and
  - (ii) less than 2% by dry weight dust able to pass through a 0.15 micron sieve.
7. Dry sand blasting shall only be used only when it is the only method suitable for the job.
8. The consent holder shall ensure that all operators of abrasive blasting equipment understand and comply with the all the conditions of this consent prior to the commencement of any work for which this consent is required.

### **Operations conducted within the permanent facility located at Katere Road, New Plymouth**

9. Except as provided for in conditions 12 to 14, all abrasive blasting on the consent holder's permanent site at Katere Road, New Plymouth shall be carried out in an enclosed booth or shed.
10. All emissions from abrasive blasting, surface preparation or surface coating operations and all other associated emissions from abrasive blasting within the permanent site at Katere Road, New Plymouth shall be contained and treated, as far as is practicable, prior to discharge from any operations enclosure. All gas streams ventilated or otherwise emitted from an enclosure shall be treated to a concentration of total particulate matter of less than  $125 \text{ mg/m}^3$  [natural temperature & pressure] corrected to dry gas basis, at any time.
11. The dust deposition rate beyond the property boundary of the permanent site at Katere Road, New Plymouth arising from the discharge, shall be less than  $4.0 \text{ g/m}^2/30 \text{ days}$ .

### **Yard operations conducted at the permanent facility located at Katere Road, New Plymouth**

12. From time to time the consent holder may receive for abrasive blasting or other surface treatment, an item that because of its bulk, weight or other factor cannot be treated inside the appropriate enclosed facility. Subject to conditions 12 to 14 such items may be treated outside the enclosed facility (termed 'yard operations').

## Consent 4475-2

13. The consent holder shall specifically notify the Chief Executive, Taranaki Regional Council not more than 7 days and not less than 48 hours prior to commencing any yard operation as described in special condition 12. Notification shall include the consent number and a brief description of the activity consented and be emailed to [worknotification@trc.govt.nz](mailto:worknotification@trc.govt.nz). Notification by fax or post is acceptable only if the consent holder does not have access to email.
14. All items which cannot be treated within properly enclosed facilities shall be screened by means of covers, tarpaulins, cladding or other means, as completely as practicable, to contain dust emissions and depositions and to restrict the spread of all blasting debris.

### **Operations conducted at any site other than the permanent facility at Katere Road, New Plymouth**

15. All items to be blasted shall be screened by means of covers, tarpaulins, cladding, or other means to contain dust emissions and deposits to the satisfaction of the Chief Executive, Taranaki Regional Council.
16. Prior to undertaking abrasive blasting within residential areas, the consent holder shall notify the relevant District Council.
17. Where abrasive blasting or surface coating is to take place within 100 metres of a watercourse, the consent holder shall notify the Chief Executive, Taranaki Regional Council, not more than 7 days and not less than 48 hours prior to any operation commencing. Notification shall include the consent number and a brief description of the activity consented and be emailed to [worknotification@trc.govt.nz](mailto:worknotification@trc.govt.nz). Notification by fax or post is acceptable only if the consent holder does not have access to email.
18. Dry abrasive blasting that is to be conducted within 200 metres of any dwelling place or property boundary may only take place after either public notice or individual notice to all affected owners or occupiers has been given.
19. The suspended particulate matter shall not exceed 3 mg/m<sup>3</sup> [measured under ambient conditions], and the deposition of dust shall not exceed 0.13 g/m<sup>2</sup>/day beyond the boundary of the property on which the activity is occurring or beyond 50 metres of the discharge when sited on public land, whichever is less.

### **Review**

20. This consent shall lapse on 31 March 2014, unless the consent is given effect to before the end of that period or the Taranaki Regional Council fixes a longer period pursuant to section 125(1)(b) of the Resource Management Act 1991.



## Consent 4475-2

21. In accordance with section 128 and section 129 of the Resource Management Act 1991, the Taranaki Regional Council may serve notice of its intention to review, amend, delete or add to the conditions of this resource consent by giving notice of review during the month of June 2014, for the purpose of ensuring that the conditions are adequate to deal with any adverse effects on the environment arising from the exercise of this resource consent, which were either not foreseen at the time the application was considered or which it was not appropriate to deal with at the time.

Signed at Stratford on 18 February 2009

For and on behalf of  
Taranaki Regional Council

---

**Chief Executive**



**Discharge Permit**  
**Pursuant to the Resource Management Act 1991**  
**a resource consent is hereby granted by the**  
**Taranaki Regional Council**

Name of  
Consent Holder: Intergroup Limited  
PO Box 7076  
Fitzroy  
New Plymouth 4341

Decision Date  
(Change): 28 July 2016

Commencement Date  
(Change): 28 July 2016 (Granted Date: 6 May 2009)

**Conditions of Consent**

Consent Granted: To discharge emissions to air from mobile blasting operations throughout the Taranaki region (excluding the Coastal Marine Area) and at a permanent facility

Expiry Date: 1 June 2020

Review Date(s): June 2018

Site Location: Various locations throughout Taranaki and a permanent site at 67 Colson Road, Waiwhakaiho

Grid Reference (NZTM) 1696976E-5676477N (permanent site)

*For General, Standard and Special conditions  
pertaining to this consent please see reverse side of this document*

### General conditions

- a) On receipt of a requirement from the Chief Executive, Taranaki Regional Council the consent holder shall, within the time specified in the requirement, supply the information required relating to the exercise of this consent.
- b) Unless it is otherwise specified in the conditions of this consent, compliance with any monitoring requirement imposed by this consent must be at the consent holder's own expense.
- c) The consent holder shall pay to the Council all required administrative charges fixed by the Council pursuant to section 36 in relation to:
  - i) the administration, monitoring and supervision of this consent; and
  - ii) charges authorised by regulations.

### Special conditions

1. The conditions of this consent shall apply to the various operations of the consent holder as follows:
  - Special conditions 2-8 apply to all operations.
  - Special conditions 9-12 apply to operations conducted within the permanent facility at 67 Colson Road, Waiwhakaiho.
  - Special conditions 13-20 apply to operations conducted at any other site other than the permanent facility at 67 Colson Road, Waiwhakaiho.

### All operations

2. The consent holder shall at all times adopt the best practicable option, as defined in section 2 of the Resource Management Act 1991, to prevent or minimise any adverse effects on the environment from the exercise of this consent.
3. Any discharge to air from the exercise of this consent shall not give rise to any offensive, objectionable or toxic levels of dust or odour at or beyond the boundary of the property on which the abrasive blasting or associated activity is occurring.
4. As far as is practicable, work areas and surrounding areas shall be cleared of accumulations of blasting material at the end of each blasting session and by the end of each working day.
5. Blasting media used for dry abrasive blasting shall contain less than 2% by dry weight dust able to pass through a 0.15 mm sieve and sand used for dry abrasive blasting shall contain less than 5% by dry weight free silica.
6. The suspended particulate matter shall not exceed 3 mg/m<sup>3</sup> (measured under ambient conditions), and the deposition of dust shall not exceed 0.13 g/m<sup>2</sup>/day beyond the property boundary or beyond 50 metres of the discharge when sited on public amenity areas, whichever is less.
7. The consent holder shall ensure that all operators of abrasive blasting equipment understand and comply with the all the conditions of this consent prior to the commencement of any work for which this consent is required.

## Consent 7468-1.4

8. In accordance with section 128 and section 129 of the Resource Management Act 1991, the Taranaki Regional Council may serve notice of its intention to review, amend, delete or add to the conditions of this resource consent by giving notice of review during the month of June 2018, for the purpose of ensuring that the conditions are adequate to deal with any adverse effects on the environment arising from the exercise of this resource consent, which were either not foreseen at the time the application was considered or which it was not appropriate to deal with at the time.

### **Operations conducted within the permanent facility at 67 Colson Road, Waiwhakaiho**

9. All abrasive blasting on the consent holder's permanent site at 67 Colson Road, Waiwhakaiho shall be carried out in an enclosed booth or shed.
10. All emissions from abrasive blasting, surface preparation or surface coating operations and all other associated emissions from abrasive blasting at the permanent site at 67 Colson Road, Waiwhakaiho shall be contained and treated, as far as is practicable, prior to discharge. All emissions from an enclosure shall be treated so that the concentration of total particulate matter does not exceed 125 mg/m<sup>3</sup> (natural temperature & pressure) corrected to dry gas basis.
11. Within three months of the granting of this consent, the consent holder shall prepare and maintain an operation, management and maintenance plan that documents the consent holder procedures within the permanent site at 67 Colson Road, Waiwhakaiho. This plan shall be followed at all times, shall be certified by the Chief Executive, Taranaki Regional Council, and shall include but not necessarily be limited to:
  - a) staff training;
  - b) general housekeeping and yard maintenance;
  - c) blasting operations;
  - d) handling of toxic substances;
  - e) monitoring and maintenance of the blasting buildings and air discharge treatment systems;
  - f) the recording of training, monitoring and maintenance undertaken;
  - g) the recording of complaints made directly to the consent holder, and
  - h) the frequency of review of the plan.
12. The monitoring, maintenance and complaints records required by special condition 11 shall be made available to the Chief Executive, Taranaki Regional Council upon request.

### **Operations conducted at any site other than the permanent facility at 67 Colson Road, Waiwhakaiho**

13. Where abrasive blasting or surface coating is to take place within 100 metres of a watercourse, the consent holder shall notify the Chief Executive, Taranaki Regional Council, prior to any operation commencing. The Chief Executive, Taranaki Regional Council, may require additional measures to prevent, minimise or mitigate any potential for adverse environmental effects. It shall be the responsibility of the consent holder to ascertain such measures prior to commencing an abrasive blasting operation, and to comply with any and all such measures at all times.

## Consent 7468-1.4

14. To allow appropriate compliance monitoring at the various locations, the consent holder should keep a record of the places the abrasive blasting operation is undertaken, including, but not limited to the following information:
  - i. the type of blasting used;
  - ii. date;
  - iii. time/duration of work;
  - iv. distance from nearest stream;
  - v. distance from nearest dwellings; and
  - vi. distance from adjacent properties.
15. The record of mobile blasting operation kept by the consent holder under special condition 14 above shall be made available to the Chief Executive, Taranaki Regional Council on request.
16. All abrasive blasting is to be conducted with taking into account wind direction and wind strength, such that off-site emissions are kept to a practicable minimum.
17. All items blasted in a mobile facility shall be those that cannot be moved to a permanent facility (e.g. bridges).
18. All items or premises to be blasted shall be screened by means of covers, tarpaulins, cladding, or other means, as completely as practicable, to contain dust emissions and depositions and to restrict the spread of all blasting debris and materials to the satisfaction of the Chief Executive, Taranaki Regional Council.
19. Dry abrasive blasting that is to be conducted within 200 metres of any dwelling place or property boundary may only take place after either public notice or individual notice to all affected owners or occupiers has been given.
20. This consent provides for the abrasive blasting of structures on land, and does not include the abrasive blasting in the coastal marine area, as defined in section two and Appendix II of the *Regional Coastal Plan for Taranaki*.

Signed at Stratford on 28 July 2016

For and on behalf of  
Taranaki Regional Council

---

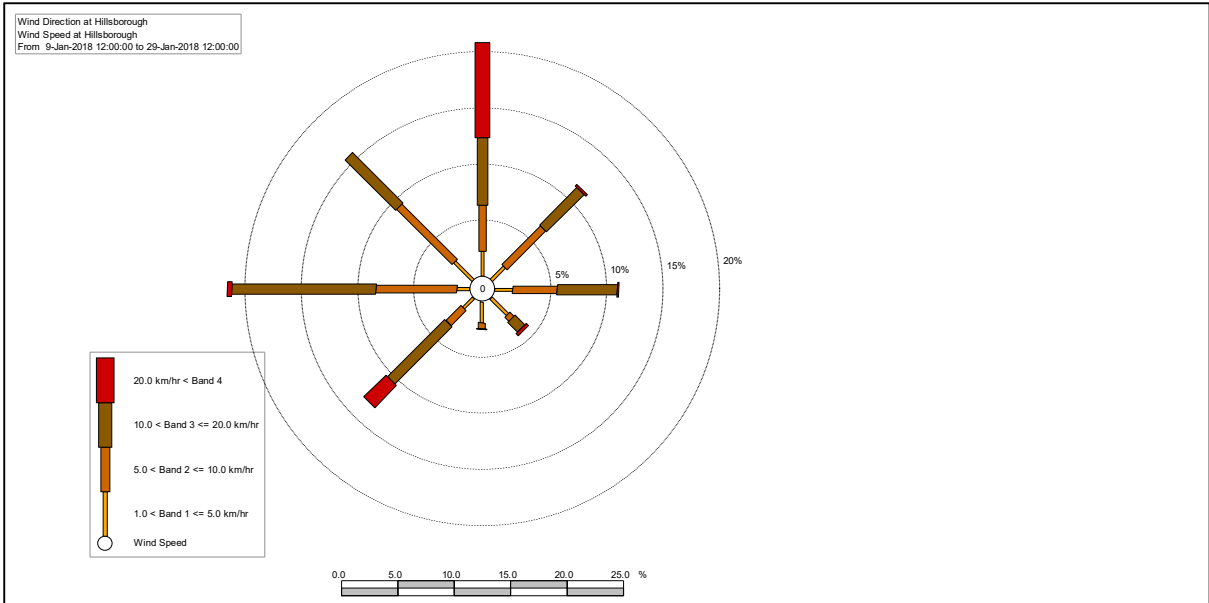
A D McLay  
**Director - Resource Management**

## Appendix II

Wind direction information for the New Plymouth  
area during the deposition gauge monitoring  
periods







~~~ Hilltop Hydro ~~~ Version 6.63.05

18-Dec-2018

~~~ PLWind ~~~

Source is R:\UNAUDITED-DATA\TELEMETRY\TELEMETRY.HTS  
 Wind Direction at Hillsborough and Wind Speed at Hillsborough  
 From 9-Jan-2018 12:00:00 to 29-Jan-2018 12:00:00

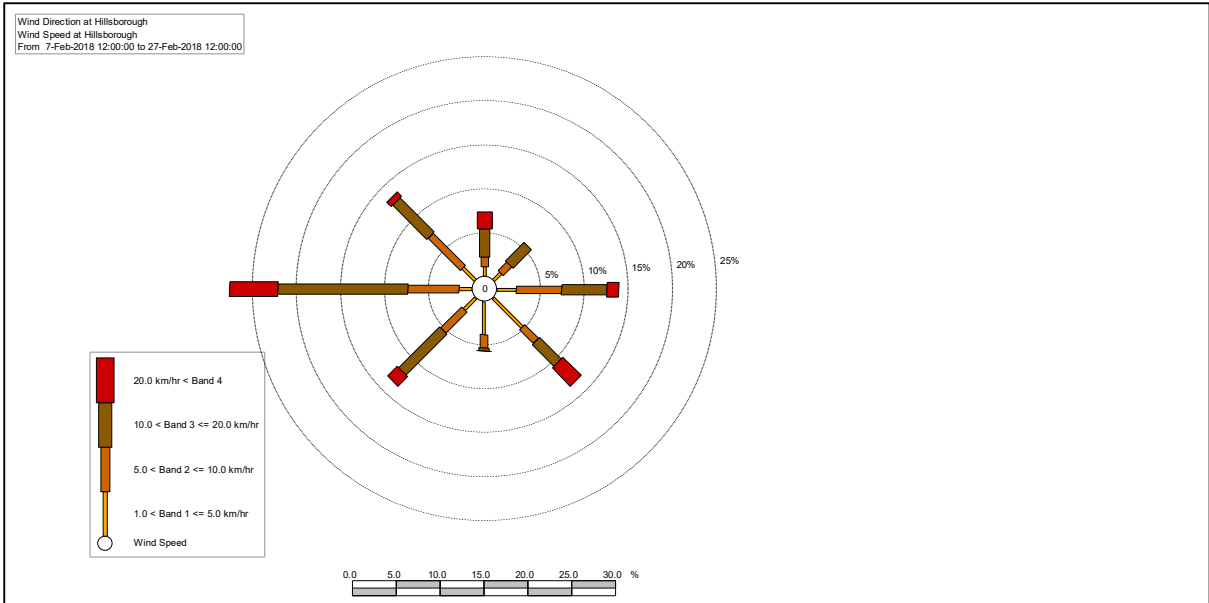
Number of data points read : 2880  
 Number of directions <0.0 or >360.0 deg. : 0  
 Limits for Wind Speed are 0.0 to 50.0 km/hr  
 Number of readings outside limits : 0  
 Number of data points used : 2880

Percentage of time in each band

| Direction     | Band 1 | Band 2 | Band 3            | Band 4 | Total |
|---------------|--------|--------|-------------------|--------|-------|
| 337.5 - 22.4  | 2.3    | 4.1    | 6.0               | 8.5    | 20.8  |
| 22.5 - 67.4   | 1.7    | 4.9    | 4.7               | 0.2    | 11.5  |
| 67.5 - 112.4  | 1.6    | 3.9    | 5.3               | 0.1    | 11.0  |
| 112.5 - 157.4 | 2.1    | 0.5    | 1.2               | 0.3    | 4.0   |
| 157.5 - 202.4 | 1.9    | 0.5    | 0.1               | 0.0    | 2.5   |
| 202.5 - 247.4 | 1.2    | 1.9    | 7.2               | 2.8    | 13.1  |
| 247.5 - 292.4 | 1.1    | 7.2    | 12.8              | 0.3    | 21.5  |
| 292.5 - 337.4 | 2.3    | 7.0    | 6.3               | 0.0    | 15.6  |
| Total         | 14.2   | 30.0   | 43.5              | 12.3   | 100.0 |
|               |        |        | Percentage <= 1.0 |        | 0.0   |

Wind Speed bands (km/hr)

1.0 < Band 1 <= 5.0      5.0 < Band 2 <= 10.0  
 10.0 < Band 3 <= 20.0      Band 4 > 20.0



~~~ Hilltop Hydro ~~~ Version 6.63.05

18-Dec-2018

~~~ PLWind ~~~

Source is R:\UNAUDITED-DATA\TELEMETRY\TELEMETRY.HTS

Wind Direction at Hillsborough and Wind Speed at Hillsborough

From 7-Feb-2018 12:00:00 to 27-Feb-2018 12:00:00

Number of data points read : 2880  
 Number of directions <0.0 or >360.0 deg. : 0  
 Limits for Wind Speed are 0.0 to 50.0 km/hr  
 Number of readings outside limits : 0  
 Number of data points used : 2880

Percentage of time in each band

| Direction     | Band 1 | Band 2 | Band 3 | Band 4 | Total |
|---------------|--------|--------|--------|--------|-------|
| 337.5 - 22.4  | 1.1    | 1.1    | 3.2    | 1.9    | 7.4   |
| 22.5 - 67.4   | 1.2    | 1.4    | 3.0    | 0.0    | 5.6   |
| 67.5 - 112.4  | 2.3    | 5.1    | 5.1    | 1.3    | 13.9  |
| 112.5 - 157.4 | 4.7    | 2.2    | 3.5    | 2.9    | 13.3  |
| 157.5 - 202.4 | 3.8    | 1.5    | 0.3    | 0.1    | 5.6   |
| 202.5 - 247.4 | 1.8    | 3.4    | 6.6    | 1.6    | 13.4  |
| 247.5 - 292.4 | 1.5    | 5.8    | 14.8   | 5.4    | 27.5  |
| 292.5 - 337.4 | 2.0    | 5.2    | 5.6    | 0.7    | 13.4  |
| Total         | 18.2   | 25.8   | 42.0   | 13.9   | 100.0 |

Percentage <= 1.0 0.0

Wind Speed bands (km/hr)

1.0 < Band 1 <= 5.0      5.0 < Band 2 <= 10.0  
 10.0 < Band 3 <= 20.0      Band 4 > 20.0