

Oaonui Water Supply Ltd  
Monitoring Programme  
Annual Report  
2023/24  
Technical Report 2024-93





# **Oaonui Water Supply Ltd**

## **Monitoring Programme**

### **Annual Report**

#### **2023/24**

#### **Technical Report 2024-93**

Taranaki Regional Council  
Private Bag 713  
Stratford

ISSN: 1178-1467 (Online)  
Document: TRCID-1188382587-292 (Word)  
Document: TRCID-1188382587-290 (Pdf)  
February 2025



## Executive summary

The Oaonui Water Supply Ltd (OWSL) operates a rural water supply scheme located on Arawhata Road at Oaonui, in the Oaonui catchment. Water is abstracted from the stream via a gravity fed intake situated behind a large weir. The water flows via a settling pond to a small treatment shed where it is chlorinated before being distributed to rural customers. At least once per day, the intakes are sluiced to clear accumulated sediment.

This report for the period July 2023 to June 2024 describes the monitoring programme implemented by Taranaki Regional Council (the Council) to assess OWSL's environmental and consent compliance performance during the period under review. The report also details the results of the monitoring undertaken and assesses the environmental effects of OWSL's activities.

**During the monitoring period, OWSL demonstrated a high level of environmental performance and high level of administrative performance.**

OWSL holds one resource consent which allows it to take and use water, one consent to discharge water and contaminants into the Oaonui stream from weir sluicing and one land use consent to use and maintain a weir and intake structure. These consents include a total of 26 conditions setting out the requirements that OWSL must satisfy.

The Council's monitoring programme for the year under review included one inspection, a review of water abstraction data and water level monitoring data, three water samples collected for physicochemical analysis, two biomonitoring surveys of receiving waters and various stream gaugings.

The monitoring indicated that the operation of the sluicing of the weir has improved, with flows not falling below 151L/s at any point in the 2023/24 year.

For reference, in the 2023/24 year, consent holders were found to achieve a high level of environmental performance and compliance for 864 (89%) of a total of 967 consents monitored through the Taranaki tailored monitoring programmes, while for another 75 (8%) of the consents a good level of environmental performance and compliance was achieved. A further 26 (3%) of consents monitored required improvement in their performance, while the remaining two (<1%) achieved a rating of poor.

In terms of overall environmental and compliance performance by the consent holder over the last several years, this report shows that OWSL's performance has improved significantly in the year under review.

This report includes recommendations for the 2024/25 year, including a recommendation relating to an optional review of consents 0231-4.1, 5453-2.0 and 10314-1.1 in June 2025.



## Table of contents

	Page	
1.	Introduction	1
1.1	Compliance monitoring programme reports and the Resource Management Act 1991	1
1.1.1	Introduction	1
1.1.2	Structure of this report	1
1.1.3	The Resource Management Act 1991 and monitoring	1
1.1.4	Evaluation of environmental performance	2
1.2	Process description	2
1.3	Resource consents	3
1.4	Monitoring programme	4
1.4.1	Introduction	4
1.4.2	Programme liaison and management	4
1.4.3	Site inspections	4
1.4.4	Chemical sampling	4
1.4.5	Biomonitoring surveys	4
1.4.6	Data Review	4
1.4.7	Hydrological monitoring and discharge assessment	4
2.	Results	5
2.1	Water	5
2.1.1	Inspections	5
2.1.2	Results of discharge monitoring	5
2.1.3	Biomonitoring surveys	5
2.1.4	Data review	8
2.1.5	Hydrological monitoring and discharge assessment	9
2.1.6	Riparian planting progress	10
2.2	Incidents, investigations, and interventions	11
3.	Discussion	12
3.1	Discussion of site performance	12
3.2	Environmental effects of exercise of consents	12
3.3	Evaluation of performance	12
3.4	Recommendations from the 2022-2023 Annual Report	14
3.5	Alterations to monitoring programmes for 2024/25	14
3.6	Exercise of optional review of consent	15

4.	Recommendations	16
	Glossary of common terms and abbreviations	17
	Bibliography and references	19
Appendix I	Resource consents held by Oaonui Water Supply Ltd	
Appendix II	Categories used to evaluate environmental and administrative performance	

## List of tables

Table 1	Resource consents held by OWSL	3
Table 2	Results of OWSL discharge on 29 February 2024	5
Table 3	Dates Maui Production Station abstracted and the minimum flow in the Oaonui Stream	9
Table 4	Flow gaugings conducted in 2023/24	9
Table 5	Summary of performance for consent 0231-4.1	12
Table 6	Summary of performance for consent 5453-2	13
Table 7	Summary of performance for consent 10314-1.1	13
Table 8	Evaluation of environmental performance over time	14

## List of figures

Figure 1	The location of the OWSL site and its associated water service area	3
Figure 2	Location of the biomonitoring sites in the Oaonui Stream in relation to the Oaonui Water Supply Stream Weir with taxa number, MCI scores and SQNCI scores for each site, 5 December 2023	6
Figure 3	Location of the biomonitoring sites in the Oaonui Stream in relation to the Oaonui Water Supply Stream Weir with taxa number, MCI scores and SQNCI scores for each site, 23 February 2024	7
Figure 4	OWSL abstraction rate for the 2023/24 monitoring period	8
Figure 5	OWSL 7-day abstraction volume for the 2023/24 monitoring period	9
Figure 6	Oaonui Stream flow record for 2023/24	10
Figure 7	Planting completion status for the Oaonui Catchment as at October 2024	11



# 1. Introduction

## 1.1 Compliance monitoring programme reports and the Resource Management Act 1991

### 1.1.1 Introduction

This report is for the period July 2023 to June 2024 by Taranaki Regional Council (the Council) on the monitoring programme associated with resource consents held by Oaonui Water Supply Ltd (OWSL). OWSL operates a rural water supply scheme situated on Arawhata Road at Oaonui, in the Oaonui catchment.

The report includes the results and findings of the monitoring programme implemented by the Council in respect of the consents held by OWSL that relate to abstractions and discharges to water within the Oaonui catchment. This report is the eighth annual report to be prepared by the Council to cover OWSL's water abstraction, discharges, structures and its effects. Previously OWSL compliance monitoring was reported in the joint South Taranaki Water Supplies report.

### 1.1.2 Structure of this report

Section 1 of this report is a background section. It sets out general information about:

- consent compliance monitoring under the *Resource Management Act 1991* (RMA) and the Council's obligations;
- the Council's approach to monitoring sites through annual programmes;
- the resource consents held by OWSL in the Oaonui catchment;
- the nature of the monitoring programme in place for the period under review; and
- a description of the activities and operations conducted in the Company's site/catchment.

Section 2 presents the results of monitoring during the period under review, including scientific and technical data.

Section 3 discusses the results, their interpretations, and their significance for the environment.

Section 4 presents recommendations to be implemented in the 2024/25 monitoring year.

A glossary of common abbreviations and scientific terms and a bibliography, are presented at the end of the report.

### 1.1.3 The Resource Management Act 1991 and monitoring

The RMA primarily addresses environmental 'effects' which are defined as positive or adverse, temporary or permanent, past, present or future, or cumulative. Effects may arise in relation to:

- a. the neighbourhood or the wider community around an activity and may include cultural and social-economic effects;
- b. physical effects on the locality, including landscape, amenity and visual effects;
- c. ecosystems, including effects on plants, animals, or habitats, whether aquatic or terrestrial;
- d. natural and physical resources having special significance (for example recreational, cultural, or aesthetic); and
- e. risks to the neighbourhood or environment.

In drafting and reviewing conditions on discharge permits and in implementing monitoring programmes, the Council is recognising the comprehensive meaning of 'effects' in as much as is appropriate for each activity. Monitoring programmes are not only based on existing permit conditions, but also on the obligations of the RMA to assess the effects of the exercise of consents. In accordance with Section 35 of the RMA, the Council undertakes compliance monitoring for consents and rules in regional plans and maintains an overview of the performance of resource users and consent holders. Compliance monitoring, including both activity and impact monitoring, enables the Council to continually re-evaluate its approach and that of consent holders to resource management and, ultimately, through the refinement of methods and considered responsible resource utilisation, to move closer to achieving sustainable development of the region's resources.

#### **1.1.4 Evaluation of environmental performance**

Besides discussing the various details of the performance and extent of compliance by the consent holders, this report also assigns a rating as to OWSL's environmental and administrative performance during the period under review. The rating categories are high, good, improvement required and poor for both environmental and administrative performance. The interpretations for these ratings are found in Appendix II.

For reference, in the 2023/24 year, consent holders were found to achieve a high level of environmental performance and compliance for 864 (89%) of a total of 967 consents monitored through the Taranaki tailored monitoring programmes, while for another 75 (8%) of the consents a good level of environmental performance and compliance was achieved. A further 26 (3%) of consents monitored required improvement in their performance, while the remaining two (<1%) achieved a rating of poor.<sup>1</sup>

## **1.2 Process description**

Water is abstracted from the Oaonui Stream via a gravity fed intake situated behind a large weir. The water then flows via a settling pond to a small treatment shed where chlorine is added prior to being distributed to rural customers (Figure 1). Water is also supplied for fire-fighting purposes and testing of bunds and tanks at the Maui Production Station. Once a day the intakes are sluiced to clear accumulated silt.

---

<sup>1</sup> The Council has used these compliance grading criteria for more than 20 years. They align closely with the 4 compliance grades in the MfE Best Practice Guidelines for Compliance, Monitoring and Enforcement, 2018

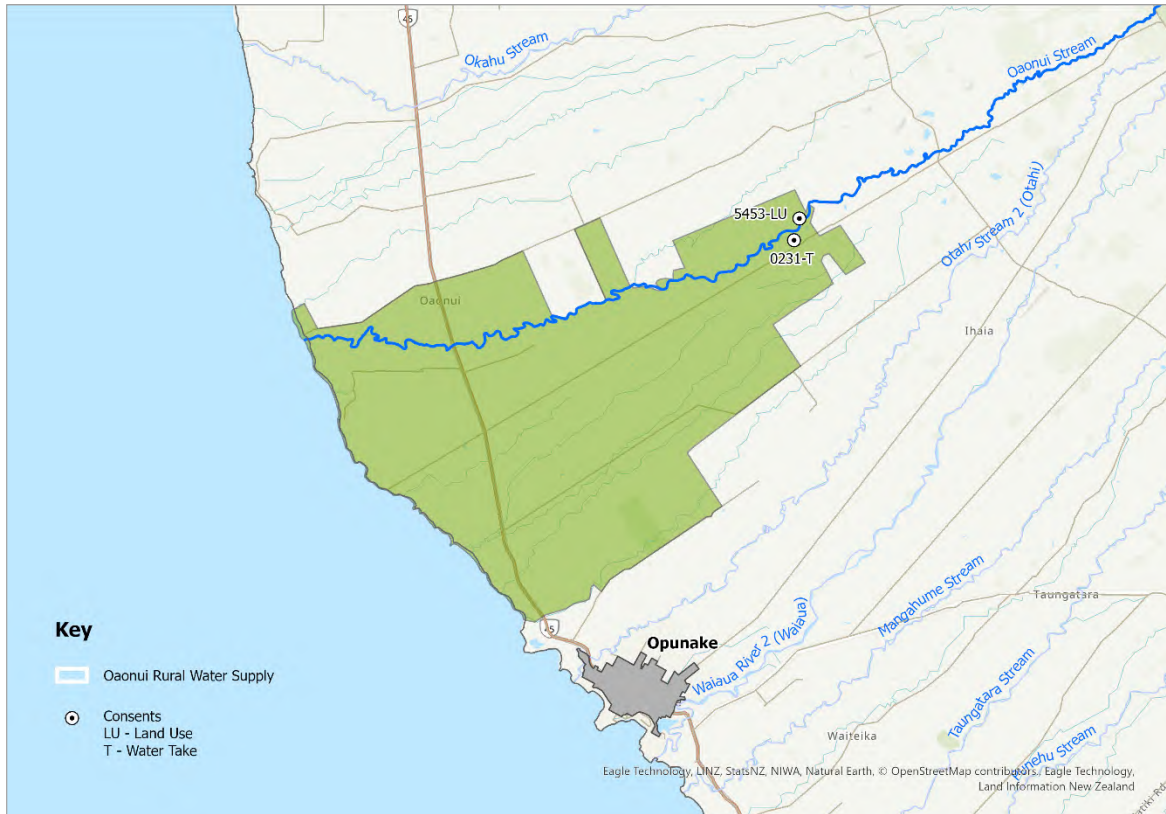


Figure 1 The location of the OWSL site and its associated water service area

### 1.3 Resource consents

OWSL holds three resource consents the details of which are summarised in Table 1 below. Summaries of the conditions attached to each permit are set out in Section 3 of this report.

A summary of the various consent types issued by the Council is included in Appendix I, as are copies of all permits held by OWSL during the period under review.

Table 1 Resource consents held by OWSL

Consent number	Purpose	Granted	Review	Expires
Water abstraction permits				
0231-4.1	To take and use water from the Oaonui Stream for a rural community water supply scheme including the Maui Production Station	August 2022	June 2025	June 2036
Water discharge permits				
10314-1.1	To discharge water and contaminants into the Oaonui Stream from sluicing a weir	August 2022	June 2025	June 2036
Land use permits				
5453-2.0	To use and maintain a weir and water intake structure on the bed of the Oaonui Stream, and to dam water, for water supply purposes	May 2017	June 2025	June 2036

## **1.4 Monitoring programme**

### **1.4.1 Introduction**

Section 35 of the RMA sets obligations upon the Council to gather information, monitor and conduct research on the exercise of resource consents within the Taranaki region. The Council is also required to assess the effects arising from the exercising of these consents and report upon them.

The Council may therefore make and record measurements of physical and chemical parameters, take samples for analysis, carry out surveys and inspections, conduct investigations and seek information from consent holders.

The monitoring programme for OWSL's site consisted of five primary components.

### **1.4.2 Programme liaison and management**

There is generally a significant investment of time and resources by the Council in:

- ongoing liaison with resource consent holders over consent conditions and their interpretation and application;
- discussion over monitoring requirements;
- preparation for any consent reviews, renewals or new consent applications;
- advice on the Council's environmental management strategies and content of regional plans; and
- consultation on associated matters.

### **1.4.3 Site inspections**

The site was visited once during the monitoring period, with regard to consents for the abstraction and discharge to water, as well as the structure consent. The main points of interest were the sluicing regime, intake structures and water metering equipment. Sources of data being collected by OWSL were identified and assessed, so that performance in respect of operation, internal monitoring and supervision could be reviewed by Council. The neighbourhood was surveyed for environmental effects.

### **1.4.4 Chemical sampling**

The Council undertook sampling of the discharge from the settling pond. The OWSL discharge was sampled on one occasion and the sample analysed for total suspended solids, pH and turbidity.

### **1.4.5 Biomonitoring surveys**

A biological survey was performed on two occasions, in spring and summer, in the Oaonui Stream to determine whether or not the activities and structures of the OWSL have had a detrimental effect on the macroinvertebrate communities within the stream.

### **1.4.6 Data Review**

Abstraction rate and volume was supplied by OWSL via telemetry and reviewed by Council staff.

### **1.4.7 Hydrological monitoring and discharge assessment**

Council staff undertook regular gauging's at the telemetered water level recording site to maintain a flow rating curve for the site. Stream water level, residual flow data and discharge data was also reviewed.

## 2. Results

### 2.1 Water

#### 2.1.1 Inspections

A site inspection was undertaken on 29 February 2024. The weir and fish pass appeared to be operating well, with no obstructions or damage to the structure. The intake was clear of debris and sand/sediment build-up. The reservoir was close to full at the time of the inspection. The lining appeared intact. The Oaonui Stream was very low, and was clear and uncoloured, with some organic foam present. A discharge sample was collected at the time of the inspection. The sample was clear and uncoloured. Water samples upstream and downstream were also taken.

#### 2.1.2 Results of discharge monitoring

One discharge sample was collected during the monitoring period with results shown in Table 2.

Table 2 Results of OWSL discharge on 29 February 2024

Site	pH	Suspended solids (g/m <sup>3</sup> )	Turbidity (FNU)
OAN000278 (u/s of discharge)	9.0	4	-
STW001175	8.8	<3	0.56
OAN000279 (d/s of discharge)	8.9	4	-
<i>General discharge consent limits</i>	6-9	20	-

There are currently no consent limits set on the constituents of OWSL's discharge however, these results are below/within accepted consent limits that other WTP's discharges have set in their consent conditions.

#### 2.1.3 Biomonitoring surveys

The Council's standard 'kick-sampling' technique was used at three established sites to collect streambed macroinvertebrates from the Oaonui Stream in relation to the consents held by OWSL. Samples have provided information to assess any potential impacts the consented water abstraction and discharges may have had on the macroinvertebrate communities of this stream. Samples were processed to provide number of taxa (richness), MCI and SQMCI<sub>5</sub> scores for each site.

The MCI is a measure of the overall sensitivity of the macroinvertebrate community to the effects of organic pollution in stony streams. It is based on the presence/absence of taxa with varying degrees of sensitivity to environmental conditions. The SQMCI<sub>5</sub> takes into account taxa abundance as well as sensitivity to pollution, and may reveal more subtle changes in communities. It may be the more appropriate index if non-organic impacts are occurring.

Significant differences in either the MCI or the SQMCI<sub>5</sub> between sites indicate the degree of adverse effects (if any) of the discharges being monitored.

### 5 December 2023

Macroinvertebrate taxa richness across the three sites (Figure 2) was low to moderate, ranging between 10-15 taxa. Notably, taxa richness at site 2 was four taxa lower compared to the sites previous lowest record. Compared to the previous survey results, taxa richness decreased by two and six taxa at site 1 and 2,

respectively, but increased by two taxa at site 3. Taxa richness was less than the historical medians at all sites, with differences of five, eight and four taxa at sites 1, 2 and 3, respectively.

MCI scores categorised sites 1 and 2 as having 'fair' macroinvertebrate community health, while site 3 was categorised as having 'good' health. Site 3 scored a significantly greater MCI score compared to site 2. This difference is likely due to the absence of the 'tolerant' *Oligochaeta* worms and the unique presence of three 'moderately' sensitive taxa at site 3. All sites recorded MCI scores lower than the previous survey, by seven, six and 12 units respectively. Comparing these current results to historical medians, shows the same trends at sites 1 and 2, with scores being seven and six units less respectively. Site 3 however, has an MCI score one unit higher than its historical median.

SQMCI scores were reflective of 'fair' macroinvertebrate community health at all sites. SQMCI values showed an increase in macroinvertebrate community health in a downstream direction. All sites recorded SQMCI values slightly lower than that recorded in the previous survey, but not significantly. Compared to the historical median, the SQMCI scores decreased at sites 1 and 3 by 0.4 and 0.2 units, respectively, but increased by 0.1 unit at site 2.

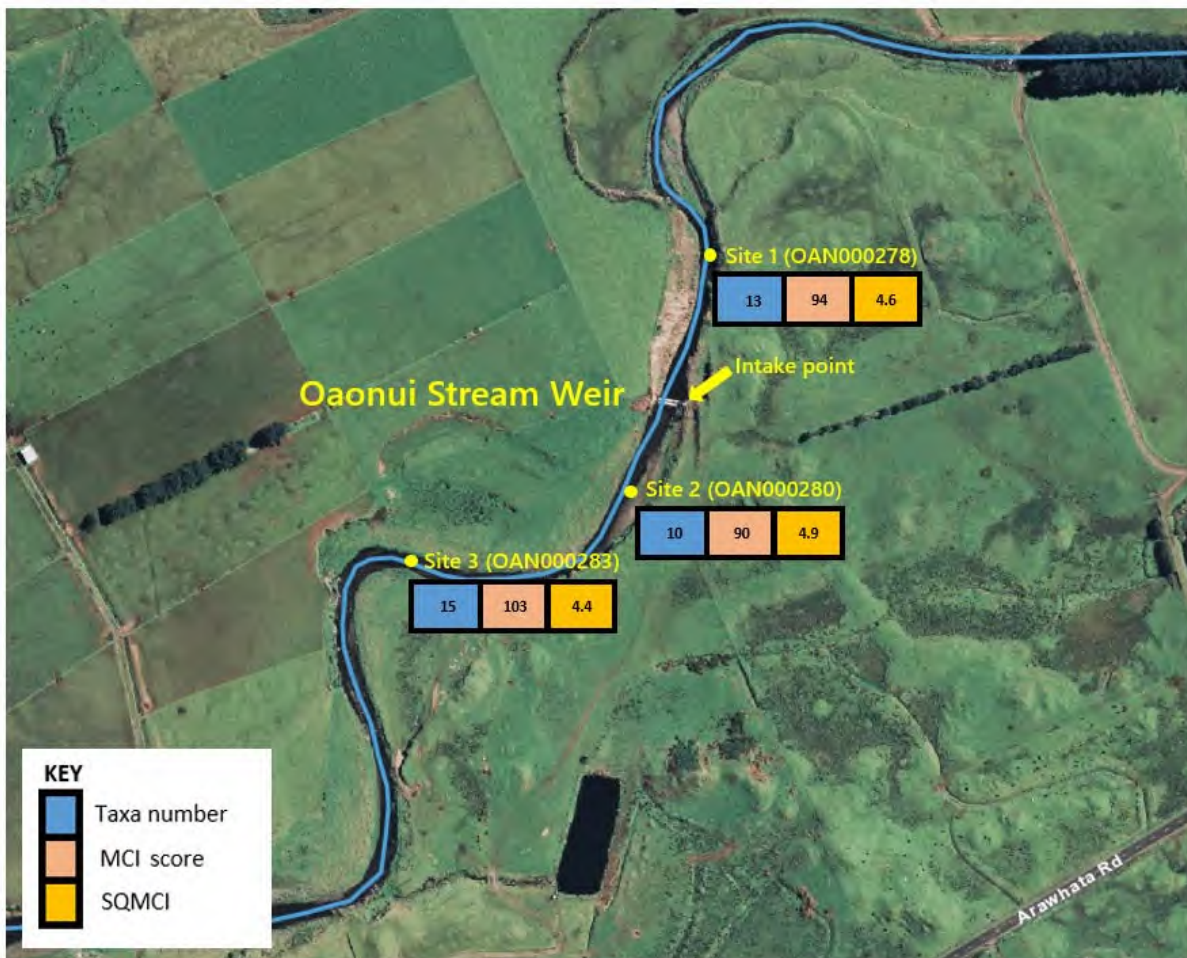


Figure 2 Location of the biomonitoring sites in the Oaonui Stream in relation to the Oaonui Water Supply Stream Weir with taxa number, MCI scores and SQMCI scores for each site, 5 December 2023

Overall, there were no significant differences in MCI and SQMCI values observed among the sites that would suggest adverse effects from the Oaonui Water Supply Scheme, with the exception of a significant increase in MCI scores between sites 2 and 3. Given the similarity between the 'control' site 1 and the two downstream sites, alongside the similarity in SQMCI scores across the sampled sites, this distinction does not suggest major differences amongst the sites. Therefore, the results of this survey indicate that the

Oaonui Water Supply Scheme did not have a significant adverse effect on the macroinvertebrate community health of the Oaonui Stream.

## February 2024

Macroinvertebrate taxa richness across the three sites (Figure 3), was low to moderate, ranging between 13 and 15 taxa. Both sites 1 and 2 recorded 15 taxa, while site 3 recorded 13 taxa. Taxa richness was lower in this survey compared to the previous spring survey and was also lower than the historical medians.

MCI scores categorised site 1 as having 'fair' macroinvertebrate health, while sites 2 and 3 were categorised as having 'poor' health. All of the sites recorded their lowest MCI score on record. Site 1 scored a significantly greater MCI score than site 2, which is likely due to the absence of 'tolerant' Oligochaeta worms and the unique presence of a 'highly sensitive' mayfly at site 1.

SQMCI scores were reflective of 'poor' macroinvertebrate community health, with no significant difference between the sites. The SQMCI scores recorded during this survey were all significantly lower compared to the previous results and the respective historical medians. Notably, sites 1 and 3 recorded the lowest SQMCI score for the respective sites to date.

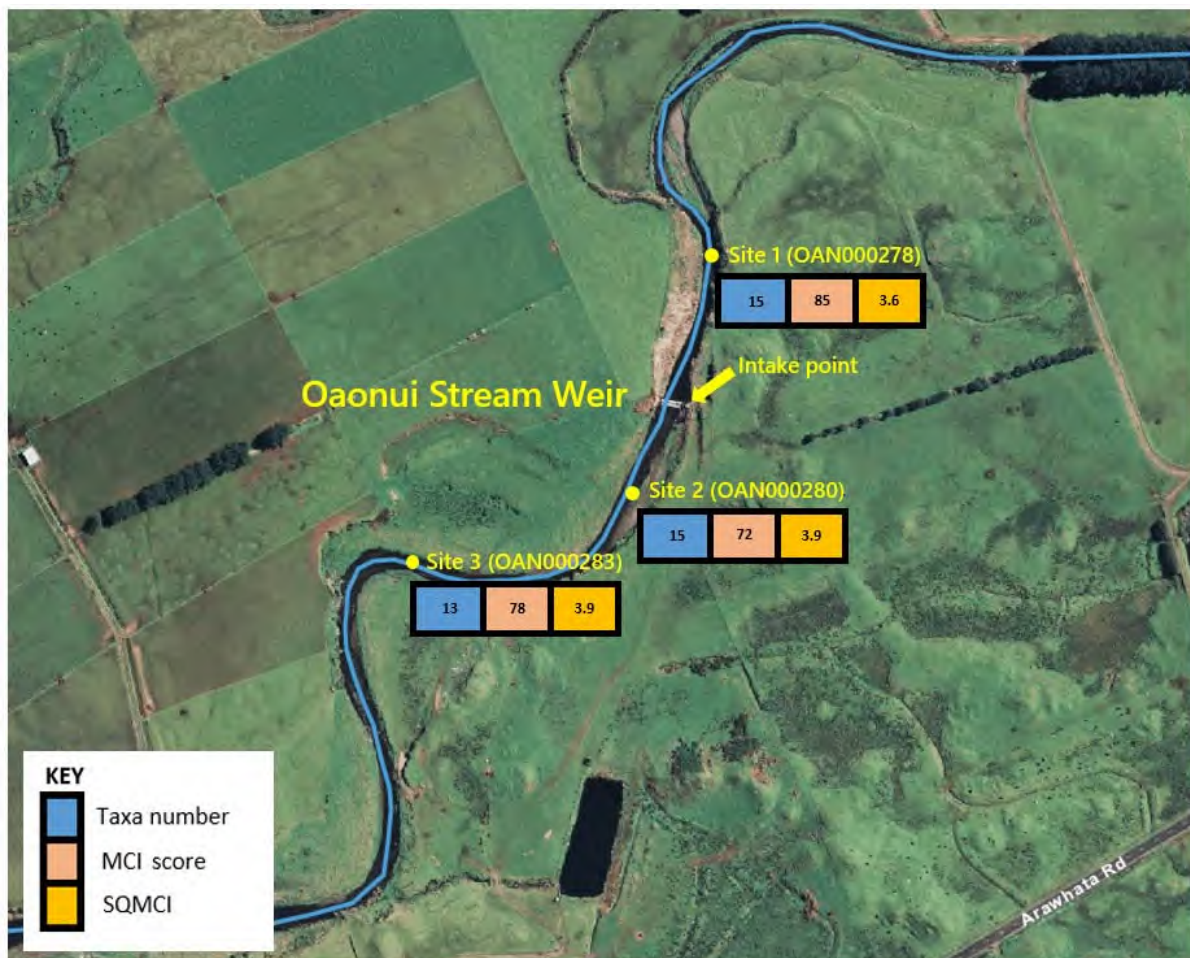


Figure 3 Location of the biomonitoring sites in the Oaonui Stream in relation to the Oaonui Water Supply Stream Weir with taxa number, MCI scores and SQMCI scores for each site, 23 February 2024

To conclude, there was a significant decline in MCI health between the 'control' site 1 and 'impact' site 2. This suggests that the abstraction or sluicing discharge could be affecting community health. However, large seasonal variations were observed in the macroinvertebrate communities between the previous spring and current surveys, with all sites recording a new minimum score for at least one macroinvertebrate

community metric. This suggests that any effect from the water supply scheme was likely overshadowed by these environmental changes. Overall, the results of this summer survey indicate that the Oaonui Water Supply Scheme did not have significant adverse effects on the macroinvertebrate community health of the Oaonui Stream. This conclusion is supported by the fact that taxa richness and SQMCI scores among the sampled sites were the same or similar during this summer survey.

Copies of biomonitoring reports for this site are available from the Council upon request.

## 2.1.4 Data review

During the monitoring period OWSL's abstraction data was provided to Council via telemetry and was reviewed by Council staff.

The consented abstraction rate limit of 50L/s was complied with for over 99.6% of the monitoring period (Figure 4).

There were three minor breaches on 21 August, 13 and 14 December 2023 and 24 January 2024. These breaches were short lived and were in relation to broken pipes that took time to locate. Once located, that area of pipe was shut down, to enable appropriate repairs to occur. OWSL replaced 2.2 kilometres of pipeline in January and February. At the time of these breaches, flows in the Oaonui stream were around median, meaning that the likely impacts of these breaches would be less than minor. Liaison between OWSL and Council staff occurred throughout these breaches.

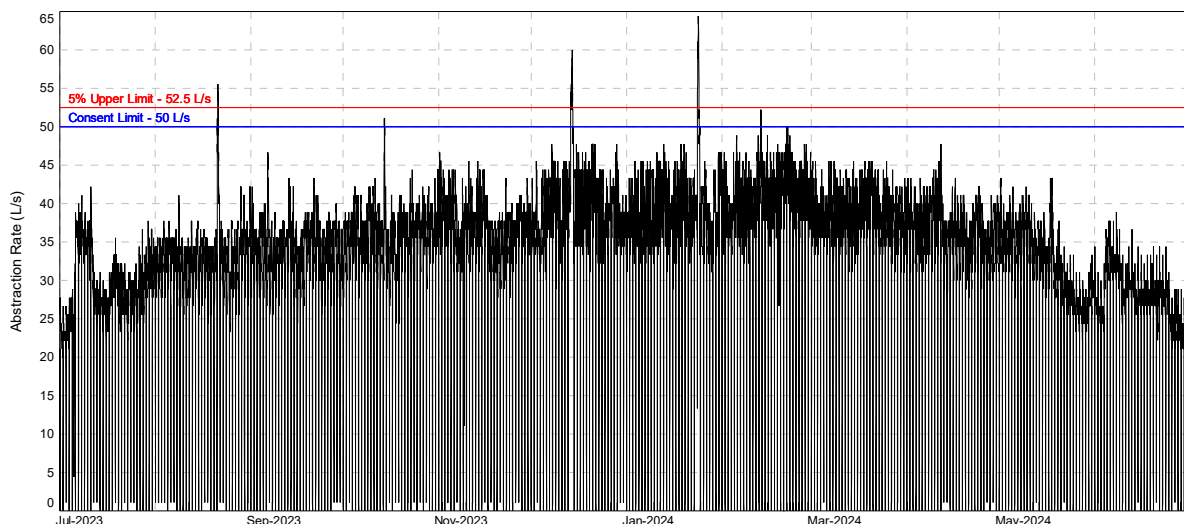


Figure 4 OWSL abstraction rate for the 2023/24 monitoring period

The consented 7-day abstraction volume of 28,000m<sup>3</sup> was complied with 100% of the time (Figure 5). The maximum 7-day usage recorded for 2023/24 was 24,187m<sup>3</sup>.



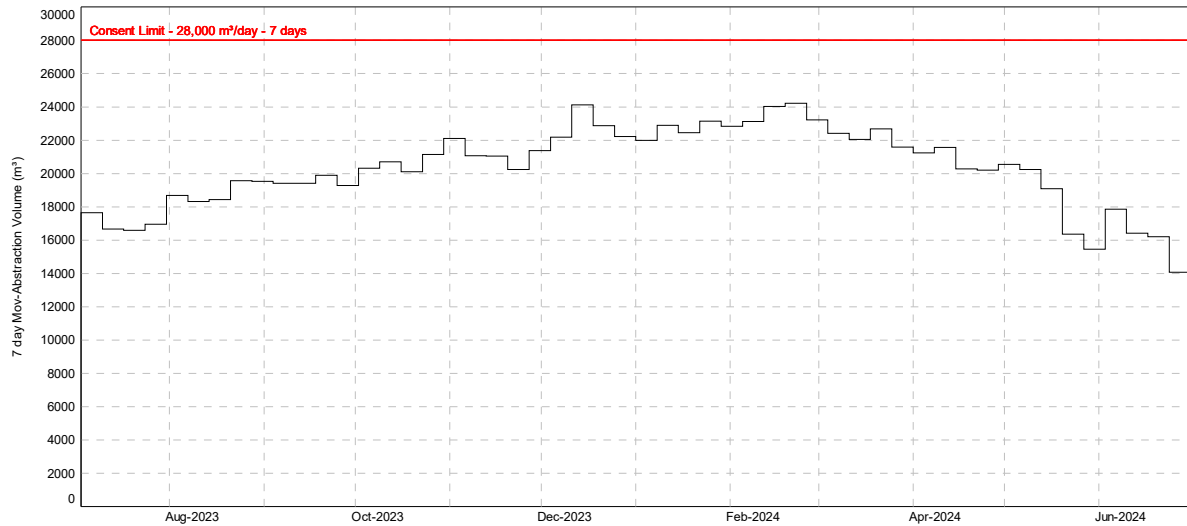


Figure 5 OWSL 7-day abstraction volume for the 2023/24 monitoring period

Condition 10 of consent 0231-4.1 specifies that no water shall be used at the Maui Production Station when flows in the Oaonui Stream have been below 151L/s at any time in the previous three days. OWSL notified the Council on five separate occasions that Maui Production Station would be taking water. On all of these occasions the flow in the Oaonui Stream had not dropped below 151L/s in the previous three days (Table 3).

Table 3 Dates Maui Production Station abstracted and the minimum flow in the Oaonui Stream

Date	Minimum flow in previous 3 days (L/s)
21 August 2023	415
20 December 2023	264
20 February 2024	n/a
07 May 2024	288
10 June 2024	269

n/a – flow data not available

## 2.1.5 Hydrological monitoring and discharge assessment

### 2.1.5.1 Residual flow monitoring

Even though it was a drier than normal summer season, with some areas in Taranaki being declared as drought, the flows in the Oaonui stayed above the 151L/s limit. This is the limit that requires OWSL to put water use restrictions in place as shown in Figure 6. As can be seen in Figure 6 no flow information was recorded for most of February and the start of March 2024. This was due to equipment failure, which took Council staff some time to resolve. Inspections occurred regularly during this time to ensure flows were above 151L/s. Council staff conducted four flow gaugings over the 2023/24 period (Table 4).

Table 4 Flow gaugings conducted in 2023/24

Date	Stage (m)	Flow (L/s)
03 July 2023	0.557	2,682
21 November 2023	0.440	779
15 February 2024	0.370	300
11 June 2024	0.437	717

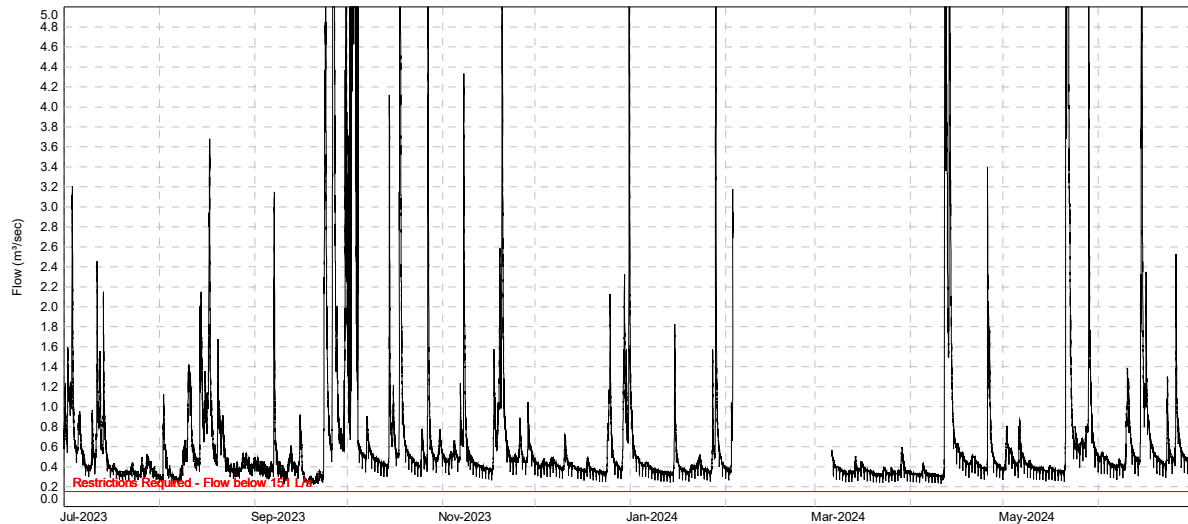


Figure 6 Oaonui Stream flow record for 2023/24

### 2.1.5.2 Discharge consent 10314-1

Condition 3 of consent 10314-1 specifies that the consent may not be exercised (i.e. abstraction, including sluicing, must cease) if, at any time on each of the three previous days, the flow in the Oaonui Stream downstream of the weir has been less than 151L/s. A rating curve was derived for the staff gauge at the site during 2019, and after applying the rating curve to the existing data it showed that sluicing regularly caused the stream to go below 151L/s. As a result, an abatement notice was issued on 2 October 2019, for breach of conditions of consent 10314-1.

Modifications made by OWSL significantly reduced the number and severity of breaches during the 2021-2022 period however, the stream flow continued to regularly drop below 151L/s during sluicing.

In June 2022, Council notified OWSL that the consent would be reviewed in order to change the requirements set out in special condition 4, relating to the sluicing of the river and the timing of the sluicing. The reviewed consent was granted in August 2022, with special condition 4 now stipulating that OWSL must not cause the stream flow to fall below 151L/s as a result of sluicing operations.

Since granting the revised consent, OWSL have remained compliant with this consent condition (Figure 6).

### 2.1.6 Riparian planting progress

Special condition 12 of consent 0231-4.1 requires:

*"The consent holder shall mitigate or offset the environmental effects of the take by making annual payments of \$2200 (plus GST) to Taranaki Regional Council as a financial contribution for the purpose of funding environmental enhancements projects. The environmental enhancement projects are, as first priority, to be in the Oaonui Stream catchment, and would include: enhancing, fencing and protection of wetlands, small streams and habitats of indigenous species. The amount to be paid shall be adjusted annually according to the consumer price index, or similar, to account for the effects of inflation, and be made no later than 1 September each year"*

The Council's Land Management department work closely with farmer's to develop and implement Riparian Management Plans in the region. In the Oaonui Catchment, 78.7km (58%) of planting and 109.5km (56%) of fencing has been completed. Figure 7 shows the planting completion status as of October 2024 for the Oaonui Catchment.

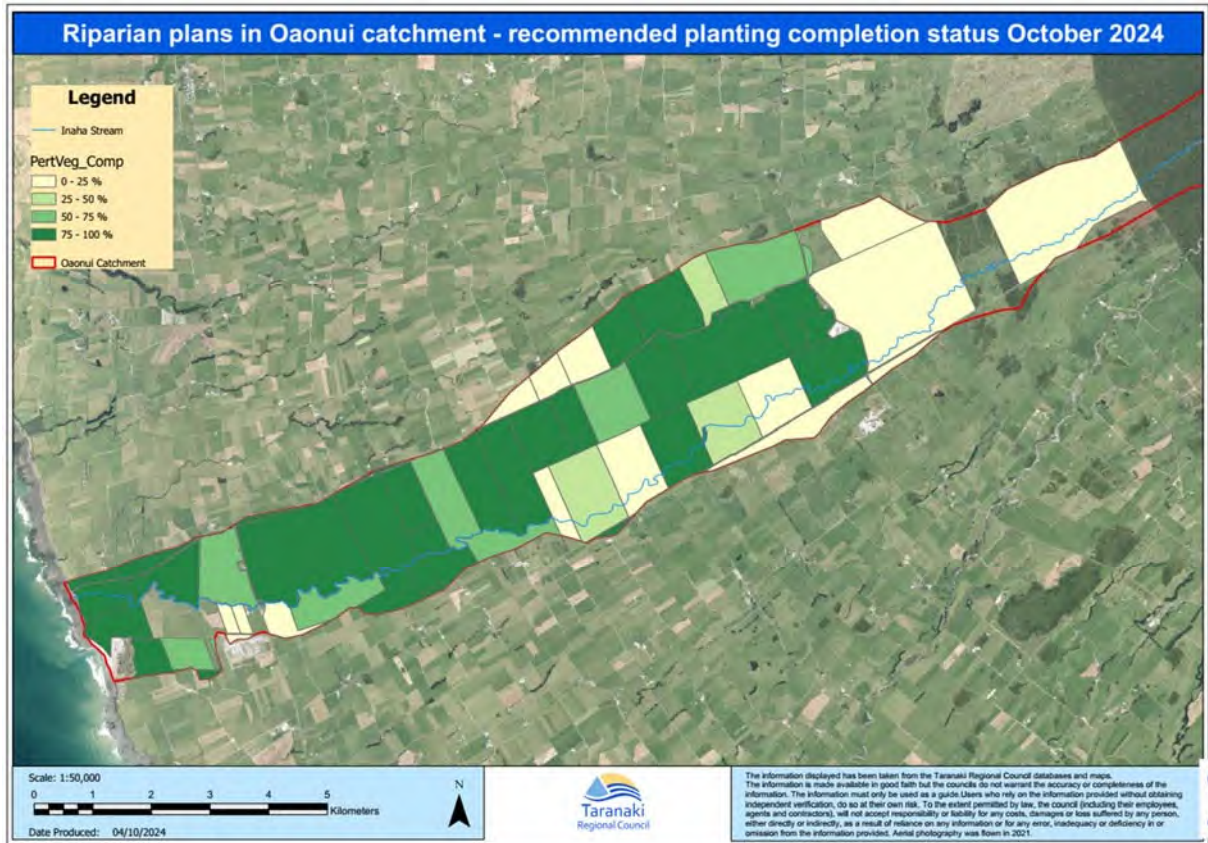


Figure 7 Planting completion status for the Oaonui Catchment as at October 2024

## 2.2 Incidents, investigations, and interventions

The monitoring programme for the year was based on what was considered to be an appropriate level of monitoring, review of data, and liaison with OWSL. During the year matters may arise which require additional activity by the Council, for example provision of advice and information, or investigation of potential or actual causes of non-compliance or failure to maintain good practices. A pro-active approach, that in the first instance avoids issues occurring, is favoured.

For all significant compliance issues, as well as complaints from the public, the Council maintains a database record. The record includes events where the individual/organisation concerned has itself notified the Council. Details of any investigation and corrective action taken are recorded for non-compliant events.

Complaints may be alleged to be associated with a particular site. If there is potentially an issue of legal liability, the Council must be able to prove by investigation that the identified individual/organisation is indeed the source of the incident (or that the allegation cannot be proven).

In the 2023/24 period, the Council was not required to undertake significant additional investigations and interventions, or record incidents, in association with OWSL's conditions in resource consents or provisions in Regional Plans.

## 3. Discussion

### 3.1 Discussion of site performance

The scheme was compliant at all times with the seven-day volume limit of 28,000 m<sup>3</sup>.

The abstraction rate of 50L/s was complied with for more than 99% of time during the monitoring period. There were three instances where OWSL breached their rate, which were all explained and dealt with at the time they occurred. Council accepted their reasons for these breaches.

The measures implemented to improve the sluicing regime have significantly reduced the number and severity of breaches since the 2020-2021 period, with no breaches recorded in the 2023/24 monitoring period.

Consent 10314-1 was reviewed in August 2022 which requires that the sluicing activity does not cause the stream flow to fall below 151L/s. Stream flows did not fall below 151L/s, either naturally or from sluicing, in the 2023/24 monitoring period.

### 3.2 Environmental effects of exercise of consents

Macroinvertebrate surveys found no direct evidence of adverse effects as a result of OWSL's activities. It is noted however, that the sluicing of the intake on a daily basis, resulting in very low water levels below the weir, may be affecting the ecology downstream. In order to further investigate any potential effects, macroinvertebrate surveys have been increased from one to two (spring and summer) and an additional site has been added downstream (increasing from two sites to three) which will continue in the 2024/25 monitoring period.

### 3.3 Evaluation of performance

A tabular summary of the consent holder's compliance record for the year under review is set out in Tables 5-8.

Table 5 Summary of performance for consent 0231-4.1

Purpose: To take and use water from the Oaonui Stream for a rural community water supply scheme including the Maui Production Station		
Condition requirement	Means of monitoring during period under review	Compliance achieved?
1. Permitted uses of water	Inspection and liaison with consent holder	Yes
2. Limits on abstraction rates and volumes	Review of data	Rate – 99.6% compliant Volume – 100% compliant
3. Install and maintain a water meter and datalogger	Water meter inspected and data received	Yes
4. Equipment installed and maintained as per water takes regulations	Meter verified – October 2019	Yes
5. Notification to Council in event of equipment failure	Liaison with consent holder	Yes
6. Measuring and recording equipment to be accessible	Inspection	Yes
7. Measurement of stream flow	Review of data	Yes
8. Provision of abstraction records in suitable format	Review of data	Yes

Purpose: To take and use water from the Oaonui Stream for a rural community water supply scheme including the Maui Production Station		
Condition requirement	Means of monitoring during period under review	Compliance achieved?
9. Restrictions of water use during low flows	Review of data	Yes
10. Restriction of water use at Maui Production Station during low flow periods	Works notification email advising of usage	Yes
11. Essential use report by 1 December 2017	Report received in 2018	Yes
12. Financial contribution	Payment received	Yes
13. Notification of testing by Maui Production Station	Liaison with consent holder	N/A
14. Intake screened	Inspection	Yes
15. Efficiency Audit Report by August 2018	Report received in 2018	Yes
16. Review condition	Next consideration June 2025	N/A
Overall assessment of consent compliance and environmental performance in respect of this consent		<b>High</b>
Overall assessment of administrative performance in respect of this consent		<b>High</b>

N/A = not applicable

Table 6 Summary of performance for consent 5453-2

Purpose: To take and use water from the Oaonui Stream for a rural community water supply scheme including the Maui Production Station		
Condition requirement	Means of monitoring during period under review	Compliance achieved?
1. Maintain weir to be fit for purpose	Inspection	Yes
2. Repair erosion or scour caused by the weir	Inspection	Yes
3. Provide fish passage	Inspection	Yes
4. Review condition	Next consideration June 2025	N/A
Overall assessment of consent compliance and environmental performance in respect of this consent		<b>High</b>
Overall assessment of administrative performance in respect of this consent		<b>High</b>

N/A = not applicable

Table 7 Summary of performance for consent 10314-1.1

Purpose: To take and use water from the Oaonui Stream for a rural community water supply scheme including the Maui Production Station		
Condition requirement	Means of monitoring during period under review	Compliance achieved?
1. Adopt best practicable option	Inspection, telemetered data and liaison with consent holder	Yes
2. Effects on receiving environment	Inspection, discharge sampling and macroinvertebrate survey	Yes
3. Consent not to be exercised if flow below weir drops below 151 L/s at any time on each of the three previous days	Review of data	Yes
4. Sluicing managed to ensure flow overtopping weir within 2 minutes	Review of data	Yes
5. Ecological Report by June 2020	Received – October 2020	Yes
6. Review condition	Next consideration June 2025	N/A

Purpose: To take and use water from the Oaonui Stream for a rural community water supply scheme including the Maui Production Station		
Condition requirement	Means of monitoring during period under review	Compliance achieved?
Overall assessment of consent compliance and environmental performance in respect of this consent		High
Overall assessment of administrative performance in respect of this consent		High

N/A = not applicable

Table 8 Evaluation of environmental performance over time

Year	Consent numbers	High	Good	Improvement req	Poor
2019/20	0231-4.0, 5453-2.0, 10314-1.0			x	
2020/21	0231-4.0, 5453-2.0, 10314-1.0			x	
2021/22	0231-4.0, 5453-2.0, 10314-1.0			x	
2022/23	0231-4.0, 0231-4.1, 5453-2.0, 10314-1.0, 10314-1.1		x		
2023/24	0231-4.1, 5453-2.0, 10314-1.1	x			

During the year, OWSL demonstrated a high level of environmental and a high level of administrative performance with the resource consents as defined in Appendix II.

### 3.4 Recommendations from the 2022/23 Annual Report

In the 2022/23 Annual Report, it was recommended:

1. THAT in the first instance, monitoring of consented activities at OWSL in the 2023/24 year continue at the same level as in 2022/23.
2. THAT should there be issues with environmental or administrative performance in 2023/24, monitoring may be adjusted to reflect any additional investigation or intervention as found necessary.

### 3.5 Alterations to monitoring programmes for 2024/25

In designing and implementing the monitoring programmes for air/water discharges in the region, the Council has taken into account:

- the extent of information already made available through monitoring or other means to date;
- its relevance under the RMA;
- the Council's obligations to monitor consented activities and their effects under the RMA;
- the record of administrative and environmental performances of the consent holder; and
- reporting to the regional community.

The Council also takes into account the scope of assessments required at the time of renewal of permits, and the need to maintain a sound understanding of industrial processes within Taranaki exercising resource consents.

No significant changes are planned for the 2024/25 monitoring programme. It should be noted that the proposed programme represents a reasonable and risk-based level of monitoring for the site in question. The Council reserves the right to subsequently adjust the programme from that initially prepared, should the need arise if potential or actual non-compliance is determined at any time during 2024/25.

### **3.6 Exercise of optional review of consent**

Resource consents 0231-4.1, 5453-2.0 and 10314-1.1 provides for an optional review of the consent in June 2025. Conditions attached to the consents allow the Council to review the consent, for the purpose of ensuring that the consent conditions are adequate to deal with any adverse effects on the environments arising from the exercise of the consent.

Based on the results of monitoring in the year under review, and in previous years as set out in earlier annual compliance monitoring reports, it is considered that there are no grounds that require a review to be pursued or grounds to exercise the review option.

## 4. Recommendations

1. THAT in the first instance, monitoring of consented activities at OWSL in the 2024/25 year continue at the same level as in 2023/24.
2. THAT should there be issues with environmental or administrative performance in 2024/25, monitoring may be adjusted to reflect any additional investigation or intervention as found necessary.
3. THAT the option for a review of resource consents 0231-4.1, 5453-2.0 and 10314-1.1 in June 2025, as set out in the consents, not be exercised, on the grounds that the current consent conditions are adequate to deal with any adverse effects on the environment arising from the exercise of the consent.



## Glossary of common terms and abbreviations

The following abbreviations and terms may be used within this report:

Biomonitoring	Assessing the health of the environment using aquatic organisms.
Conductivity	Conductivity, an indication of the level of dissolved salts in a sample, usually measured at 25°C and expressed in $\mu\text{S}/\text{cm}$ .
Cumec	A volumetric measure of flow- 1 cubic metre per second ( $1\text{m}^3\text{s}^{-1}$ ).
FNU	Formazin nephelometric units, a measure of the turbidity of water.
Fresh	Elevated flow in a stream, such as after heavy rainfall.
$\text{g}/\text{m}^3$	Grams per cubic metre, and equivalent to milligrams per litre (mg/L). In water, this is also equivalent to parts per million (ppm), but the same does not apply to gaseous mixtures.
Incident	An event that is alleged or is found to have occurred that may have actual or potential environmental consequences or may involve non-compliance with a consent or rule in a regional plan. Registration of an incident by the Council does not automatically mean such an outcome had actually occurred.
Intervention	Action/s taken by Council to instruct or direct actions be taken to avoid or reduce the likelihood of an incident occurring.
Investigation	Action taken by Council to establish what were the circumstances/events surrounding an incident including any allegations of an incident.
Incident register	The incident register contains a list of events recorded by the Council on the basis that they may have the potential or actual environmental consequences that may represent a breach of a consent or provision in a Regional Plan.
L/s	Litres per second.
$\text{m}^2$	Square Metres.
MCI	Macroinvertebrate community index; a numerical indication of the state of biological life in a stream that takes into account the sensitivity of the taxa present to organic pollution in stony habitats.
Mixing zone	The zone below a discharge point where the discharge is not fully mixed with the receiving environment. For a stream, conventionally taken as a length equivalent to 7 times the width of the stream at the discharge point.
$\mu\text{S}/\text{cm}$	Microsiemens per centimetre.
pH	A numerical system for measuring acidity in solutions, with 7 as neutral. Numbers lower than 7 are increasingly acidic and higher than 7 are increasingly alkaline. The scale is logarithmic i.e. a change of 1 represents a ten-fold change in strength. For example, a pH of 4 is ten times more acidic than a pH of 5.
Physicochemical	Measurement of both physical properties (e.g. temperature, clarity, density) and chemical determinants (e.g. metals and nutrients) to characterise the state of an environment.
$\text{PM}_{10}$ , $\text{PM}_{2.5}$ , $\text{PM}_{1.0}$	Relatively fine airborne particles (less than 10 or 2.5 or 1.0 micrometre diameter, respectively).
Resource consent	Refer Section 87 of the RMA. Resource consents include land use consents (refer Sections 9 and 13 of the RMA), coastal permits (Sections 12, 14 and 15), water permits (Section 14) and discharge permits (Section 15).

RMA	<i>Resource Management Act 1991</i> and including all subsequent amendments.
SS	Suspended solids.
SQMCI	Semi quantitative macroinvertebrate community index.
Temp	Temperature, measured in °C (degrees Celsius).
Turb	Turbidity, expressed in NTU or FNU.

For further information on analytical methods, contact a manager within the Environment Quality Department.

## Bibliography and references

- Ministry for the Environment (2018). *Best Practice Guidelines for Compliance, Monitoring and Enforcement under the Resource Management Act 1991*. Wellington: Ministry for the Environment.
- Taranaki Regional Council (2024): *Biomonitoring of Oaonui Stream in relation to the Oaonui Water Supply Scheme, February 2024*. Internal Memorandum AB024.
- Taranaki Regional Council (2024): *Biomonitoring of Oaonui Stream in relation to the Oaonui Water Supply Scheme, December 2023*. Internal Memorandum AB033.
- Taranaki Regional Council (2024): *Oaonui Water Supply Limited Monitoring Programme Annual Report 2022-2023*. Technical Report 2023-76.
- Taranaki Regional Council (2022): *Oaonui Water Supply Limited Monitoring Programme Annual Report 2021-2022*. Technical Report 2022-38.
- Taranaki Regional Council (2022): *Oaonui Water Supply Limited Monitoring Programme Annual Report 2020-2021*. Technical Report 2021-19.
- Taranaki Regional Council (2021): *Oaonui Water Supply Limited Monitoring Programme Annual Report 2019-2020*. Technical Report 2020-100.
- Taranaki Regional Council (2019): *Oaonui Water Supply Limited Monitoring Programme Annual Report 2018-2019*. Technical Report 2019-96.
- Taranaki Regional Council (2018): *Oaonui Water Supply Limited Monitoring Programme Annual Report 2017-2018*. Technical Report 2018-24.
- Taranaki Regional Council (2017): *Oaonui Water Supply Limited Monitoring Programme Annual Report 2016-2017*. Technical Report 2017-18.
- Taranaki Regional Council (2016): *South Taranaki Water Supplies Monitoring Programme Annual Report 2015-2016*. Technical Report 2015-103.
- Taranaki Regional Council (2015): *South Taranaki Water Supplies Monitoring Programme Annual Report 2014-2015*. Technical Report 2015-69.
- Taranaki Regional Council (2014): *South Taranaki Water Supplies Monitoring Programme Annual Report 2013-2014*. Technical Report 2014-121.
- Taranaki Regional Council (2013): *South Taranaki Water Supplies Monitoring Programme Annual Report 2012-2013*. Technical Report 2013-65.
- Taranaki Regional Council (2012): *South Taranaki Water Supplies Monitoring Programme Annual Report 2011-2012*. Technical Report 2012-78.
- Taranaki Regional Council (2011): *South Taranaki Water Supplies Monitoring Programme Annual Report 2010-2011*. Technical Report 2011-42.
- Taranaki Regional Council (2010): *South Taranaki Water Supplies Monitoring Programme Annual Report 2009-2010*. Technical Report 2010-53.
- Taranaki Regional Council (2010): *South Taranaki Water Supplies Monitoring Programme Annual Report 2008-2009*. Technical Report 2009-84.
- Taranaki Regional Council (2008): *South Taranaki District Water Supply Plants Monitoring Programme Biennial Report 2006-2008*. Technical Report 2008-85.

- Taranaki Regional Council (2006): *South Taranaki District Water Supply Plants and Structures Monitoring Programme Annual Report 2005-2006*. Technical Report 2006-22.
- Taranaki Regional Council (2005): *South Taranaki District Water Supply Plants and Structures Monitoring Programme Annual Report 2004-2005*. Technical Report 2005-54.
- Taranaki Regional Council (2004): *South Taranaki District Council Water Supply Plants and Structures Monitoring Programme Annual Report 2003-2004*. Technical Report 2004-09.
- Taranaki Regional Council (2003): *South Taranaki District Council Water Supply Plants and Structures Monitoring Programme Annual Report 2002-2003*. Technical Report 2003-69.
- Taranaki Regional Council (2002): *South Taranaki District Council Water Supply Plants and Structures Monitoring Programme Annual Report 2001-2002*. Technical Report 2002-64.
- Taranaki Regional Council (2001): *South Taranaki District Council Water Supply Plants and Structures Monitoring Programme Annual Report 2000-2001*. Technical Report 2001-65.
- Taranaki Regional Council (2000): *South Taranaki District Council Water Supply Plants and Structures Monitoring Programme Annual Report 1999-2000*. Technical Report 2000-80.

## Appendix I

### Resource consents held by Oaonui Water Supply Ltd

(For a copy of the signed resource consent  
please contact the TRC Consents department)

## **Water abstraction permits**

Section 14 of the RMA stipulates that no person may take, use, dam or divert any water, unless the activity is expressly allowed for by a resource consent or a rule in a regional plan, or it falls within some particular categories set out in Section 14. Permits authorising the abstraction of water are issued by the Council under Section 87(d) of the RMA.

## **Water discharge permits**

Section 15(1)(a) of the RMA stipulates that no person may discharge any contaminant into water, unless the activity is expressly allowed for by a resource consent or a rule in a regional plan, or by national regulations. Permits authorising discharges to water are issued by the Council under Section 87(e) of the RMA.

## **Air discharge permits**

Section 15(1)(c) of the RMA stipulates that no person may discharge any contaminant from any industrial or trade premises into air, unless the activity is expressly allowed for by a resource consent, a rule in a regional plan, or by national regulations. Permits authorising discharges to air are issued by the Council under Section 87(e) of the RMA.

## **Discharges of wastes to land**

Sections 15(1)(b) and (d) of the RMA stipulate that no person may discharge any contaminant onto land if it may then enter water, or from any industrial or trade premises onto land under any circumstances, unless the activity is expressly allowed for by a resource consent, a rule in a regional plan, or by national regulations. Permits authorising the discharge of wastes to land are issued by the Council under Section 87(e) of the RMA.

## **Land use permits**

Section 13(1)(a) of the RMA stipulates that no person may in relation to the bed of any lake or river use, erect, reconstruct, place, alter, extend, remove, or demolish any structure or part of any structure in, on, under, or over the bed, unless the activity is expressly allowed for by a resource consent, a rule in a regional plan, or by national regulations. Land use permits are issued by the Council under Section 87(a) of the RMA.

## **Coastal permits**

Section 12(1)(b) of the RMA stipulates that no person may erect, reconstruct, place, alter, extend, remove, or demolish any structure that is fixed in, on, under, or over any foreshore or seabed, unless the activity is expressly allowed for by a resource consent, a rule in a regional plan, or by national regulations. Coastal permits are issued by the Council under Section 87(c) of the RMA.

**Water Permit**  
**Pursuant to the Resource Management Act 1991**  
**a resource consent is hereby granted by the**  
**Taranaki Regional Council**

Name of Consent Holder: Oaonui Water Supply Limited

Decision Date (Review): 25 August 2022

Commencement Date (Review): 25 August 2022 (Granted Date: 1 May 2017)

**Conditions of Consent**

Consent Granted: To take and use water from the Oaonui Stream for a rural community water supply scheme including the Maui Production Station

Expiry Date: 1 June 2036

Review Date(s): June 2025 and at 3-yearly intervals thereafter

Site Location: Arawhata Road, Oaonui

Grid Reference (NZTM) 1676831E-5641435N

Catchment: Oaonui

*For General, Standard and Special conditions  
pertaining to this consent please see reverse side of this document*

### General condition

- a. The consent holder shall pay to the Taranaki Regional Council all the administration, monitoring and supervision costs of this consent, fixed in accordance with section 36 of the Resource Management Act 1991.

### Special conditions

1. This consent authorises taking water only for the purposes of providing:
  - (a) a general supply for domestic and farm use within the scheme area;
  - (b) water for general domestic uses and firefighting training at the Maui Production Station; and
  - (c) water for testing of bunds and tanks at the Maui Production Station.
2. The rate of taking shall not exceed 50 litres per second, and the volume taken in any 7 day period ending at midnight (New Zealand Standard Time) shall not exceed 28,000 cubic metres.
3. Before exercising this consent the consent holder shall install, and thereafter maintain a water meter and a datalogger at the site of taking (or a nearby site in accordance with Regulation 10 of the *Resource Management (Measurement and Reporting of Water Takes) Regulations 2010*. The water meter and datalogger shall be tamper-proof and shall measure and record the rate and volume of water taken to an accuracy of  $\pm 5\%$ . Records of the date, the time and the rate and volume of water taken at intervals not exceeding 15 minutes, shall be made available to the Chief Executive, Taranaki Regional Council at all reasonable times.

*Note: Water meters and dataloggers must be installed, and regularly maintained, in accordance with manufacturer's specifications in order to ensure that they meet the required accuracy. Even with proper maintenance water meters and dataloggers have a limited lifespan.*

4. The consent holder shall provide the Chief Executive, Taranaki Regional Council with a document from a suitably qualified person certifying that water measuring and recording equipment required by the conditions of this consent ('the equipment'):
  - (a) has been installed and/or maintained in accordance with the manufacturer's specifications; and/or
  - (b) has been tested and shown to be operating to an accuracy of  $\pm 5\%$ .

The documentation shall be provided:

- (i) within 30 days of the installation of a water meter or datalogger;
  - (ii) at other times when reasonable notice is given and the Chief Executive, Taranaki Regional Council has reasonable evidence that the equipment may not be functioning as required by this consent; and
  - (iii) no less frequently than once every five years.
5. If any measuring or recording equipment breaks down, or for any reason is not operational, the consent holder shall advise the Chief Executive, Taranaki Regional Council immediately. Any repairs or maintenance to this equipment must be undertaken by a suitably qualified person and a maintenance report provided to the Chief Executive, Taranaki Regional Council within 30 days of the work occurring.



## Consent 0231-4.1

6. Any water meter or datalogger shall be accessible to Taranaki Regional Council officers at all reasonable times for inspection and/or data retrieval. In addition the data logger shall be designed and installed so that Taranaki Regional Council officers can readily verify that it is accurately recording the required information.
7. From 1 December 2017, for flows less than 500 litres per second, the consent holder shall measure and record the flow in the Oaonui Stream at the take site at intervals not exceeding 15 minutes to an accuracy of  $\pm 10\%$ .
8. The records of water taken (condition 3) and of the stream flow (condition 7) shall:
  - (a) be in a format that, in the opinion of the Chief Executive, Taranaki Regional Council, is suitable for auditing;
  - (b) specifically record the water taken as 'zero' when no water is taken; and
  - (c) from 1 December 2017, be transmitted directly to the Taranaki Regional Council's computer system, within 2 hours of being recorded.
9. When the calculated flow in the Oaonui Stream, downstream of the intake point, has at any time on each of the three previous days been less than 151 litres per second, the taking of water shall be restricted to the minimum amount necessary to maintain the health and safety of people and animals (i.e. garden watering and other non-essential uses are prohibited).
10. No water shall be used for testing bunds or product storage tanks at the Maui Production Station when the flow in the Oaonui Stream, measured immediately downstream of the intake, has at any time on each of the three previous days been less than 151 litres per second.
11. Before 1 December 2017 the consent holder shall provide a report to the Chief Executive, Taranaki Regional Council that:
  - (a) identifies uses of water that are necessary to maintain the health and safety of people and animals; and
  - (b) details methods that the consent holder will use to ensure that only those uses identified in condition 11(a) will occur when the flow immediately downstream of the intake is less than 151 L/s.

The consent holder shall also provide a copy of this report to Te Kahui o Taranaki Trust and to Fish and Game.
12. The consent holder shall mitigate or offset the environmental effects of the take by making annual payments of \$2200 (plus GST) to the Taranaki Regional Council as a financial contribution for the purpose of funding environmental enhancement projects. The environmental enhancement projects are, as first priority, to be in the Oaonui Stream catchment, and would include: enhancing, fencing and protection of wetlands, small streams and habitats of indigenous species. The amount to be paid shall be adjusted annually according to the consumer price index, or similar, to account for the effects of inflation, and be made no later than 1 September each year.
13. The consent holder shall notify the Taranaki Regional Council when the Maui Production station is undertaking testing on vessels and bunds. Notification shall include the consent number and shall detail the amount of water needed, type of test and test date and be emailed to [worknotification@trc.govt.nz](mailto:worknotification@trc.govt.nz).

## Consent 0231-4.1

14. The consent holder shall ensure that the intake at the weir is designed to avoid fish entering the intake or being trapped against the screen.
15. Before 31 August 2018 the consent holder shall provide an 'Efficiency Audit Report', prepared by a suitably qualified independent person, to the Chief Executive, Taranaki Regional Council. The report shall have the following objectives:
  - (a) characterising 'efficient water use' in the context of the Oaonui Water Supply;
  - (b) describing the current level of efficiency of the Oaonui Water Supply Scheme;
  - (c) identifying any barriers to efficient water use; and
  - (d) identifying how efficient water use can be achieved, including a timetable.

The report shall include as a minimum:

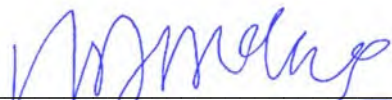
- (i) any work that could be undertaken to detect and minimise leaks;
- (ii) identification of water use efficiency and conservation measures that shall be practiced by individual users in order to achieve an appropriate level of efficiency;
- (iii) water use benchmarking data for the region, how the Oaonui Water Supply Scheme compares and reason for any significant differences;
- (iv) an assessment of the costs and benefits of individual metering;
- (v) the types of shed washdown methods used by farms in the scheme and how those methods contribute to efficient water use; and
- (vi) Recommendations to achieve efficient water use as appropriate.

The consent holder shall also provide a copy of this report to Te Kahui o Taranaki Trust and to Fish and Game.

16. In accordance with section 128 and section 129 of the Resource Management Act 1991, the Taranaki Regional Council may serve notice of its intention to review, amend, delete or add to the conditions of this resource consent by giving notice of review during the month of June 2019 and at 3-yearly intervals thereafter for the purposes of:
  - (a) ensuring efficient water use; and/or
  - (b) ensuring that the conditions are adequate to deal with any adverse effects on the environment arising from the exercise of this resource consent, which were either not foreseen at the time the application was considered or which it was not appropriate to deal with at the time.

Signed at Stratford on 25 August 2022

For and on behalf of  
Taranaki Regional Council

  
\_\_\_\_\_  
A D McLay  
**Director - Resource Management**

**Land Use Consent**  
**Pursuant to the Resource Management Act 1991**  
**a resource consent is hereby granted by the**  
**Taranaki Regional Council**

Name of  
Consent Holder: Oaonui Water Supply Limited  
PO Box 3157  
New Plymouth 4347

Decision Date: 5 April 2017

Commencement Date: 1 May 2017

**Conditions of Consent**

Consent Granted: To use and maintain a weir and water intake structure on the bed of the Oaonui Stream, and to dam water, for water supply purposes

Expiry Date: 1 June 2036

Review Date(s): June 2019 and 3-yearly intervals thereafter

Site Location: Arawhata Road, Oaonui

Grid Reference (NZTM) 1676822E-5641433N

Catchment: Oaonui

*For General, Standard and Special conditions  
pertaining to this consent please see reverse side of this document*

**General condition**

- a. The consent holder shall pay to the Taranaki Regional Council all the administration, monitoring and supervision costs of this consent, fixed in accordance with section 36 of the Resource Management Act 1991.

**Special conditions**

1. The consent holder shall maintain the weir so that it remains sound and fit for purpose.
2. The consent holder shall repair any erosion or scour of the river bed or banks caused by the weir and take reasonable steps to stop it recurring.
3. The weir shall not restrict the passage of fish.
4. In accordance with section 128 and section 129 of the Resource Management Act 1991, the Taranaki Regional Council may serve notice of its intention to review, amend, delete or add to the conditions of this resource consent by giving notice of review during the month of June 2019, and 3-yearly intervals thereafter for the purpose of ensuring that the conditions are adequate to deal with any adverse effects on the environment arising from the exercise of this resource consent, which were either not foreseen at the time the application was considered or which it was not appropriate to deal with at the time.

Signed at Stratford on 5 April 2017

For and on behalf of  
Taranaki Regional Council

---

A D McLay  
**Director - Resource Management**

**Discharge Permit**  
**Pursuant to the Resource Management Act 1991**  
**a resource consent is hereby granted by the**  
**Taranaki Regional Council**

Name of Consent Holder: Oaonui Water Supply Limited

Decision Date (Review): 25 August 2022

Commencement Date (Review): 25 August 2022 (Granted Date: 1 May 2017)

**Conditions of Consent**

Consent Granted: To discharge water and contaminants into the Oaonui Stream from sluicing a weir

Expiry Date: 1 June 2036

Review Date(s): June 2025 and 3-yearly intervals thereafter

Site Location: Arawhata Road, Oaonui

Grid Reference (NZTM) 1676828E-5641424N (sluicing discharge)  
1676624E-5641124N (sand trap discharge)

Catchment: Oaonui

*For General, Standard and Special conditions  
pertaining to this consent please see reverse side of this document*

**General condition**

- a. The consent holder shall pay to the Taranaki Regional Council all the administration, monitoring and supervision costs of this consent, fixed in accordance with section 36 of the Resource Management Act 1991.

**Special conditions**

1. The consent holder shall at all times adopt the best practicable option, as defined in section 2 of the Resource Management Act 1991, to prevent or minimise any actual or likely adverse effect on the environment associated with the discharge and the activity generally, including by appropriately managing the timing, frequency and duration of sluicing.
2. The exercise of this consent shall not give rise to any of the following effects in the Oaonui Stream beyond a distance of 50 metres downstream of a discharge point:
  - (a) any conspicuous change in the colour or visual clarity;
  - (b) any emission of objectionable odour;
  - (c) the rendering of fresh water unsuitable for consumption by farm animals; and
  - (d) any significant adverse effects on aquatic life.
3. This consent shall not be exercised if, at any time on each of the three previous days, the flow in the Oaonui Stream downstream of the weir has been less than 151 litres per second.
4. The sluicing shall not cause stream flow below the weir to fall below 151 litres per second at all times.
5. The consent holder shall ensure that an investigation is undertaken into the effects on the ecology of Oaonui Stream resulting from the exercise of this consent in combination with the damming authorised by consent 5453-2.0 and the taking authorised by consent 0231-4.0. A report on that investigation shall be provided to the Chief Executive, Taranaki Regional Council before 1 June 2020. The investigation shall be based on MCI and fish surveys.

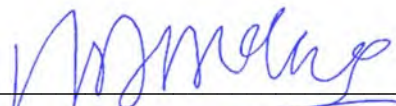
The consent holder shall provide a copy of this report to Te Kahui o Taranaki Trust and to Fish and Game.

Consent 10314-1.1

6. In accordance with section 128 and section 129 of the Resource Management Act 1991, the Taranaki Regional Council may serve notice of its intention to review, amend, delete or add to the conditions of this resource consent by giving notice of review during the month of June 2019 and at 3-yearly intervals thereafter, for the purpose of ensuring that the conditions are adequate to deal with any adverse effects on the environment arising from the exercise of this resource consent, which were either not foreseen at the time the application was considered or which it was not appropriate to deal with at the time.

Signed at Stratford on 25 August 2022

For and on behalf of  
Taranaki Regional Council



---

A D McLay

**Director - Resource Management**





## Appendix II

Categories used to evaluate environmental and administrative performance

## Categories used to evaluate environmental and administrative performance

Environmental performance is concerned with actual or likely effects on the receiving environment from the activities during the monitoring year. Administrative performance is concerned with the Company's approach to demonstrating consent compliance in site operations and management including the timely provision of information to Council (such as contingency plans and water take data) in accordance with consent conditions.

Events that were beyond the control of the consent holder and unforeseeable (that is a defence under the provisions of the RMA can be established) may be excluded with regard to the performance rating applied. For example loss of data due to a flood destroying deployed field equipment.

The categories used by the Council for this monitoring period, and their interpretation, are as follows:

### Environmental Performance

**High:** No or inconsequential (short-term duration, less than minor in severity) breaches of consent or regional plan parameters resulting from the activity; no adverse effects of significance noted or likely in the receiving environment. The Council did not record any verified unauthorised incidents involving environmental impacts and was not obliged to issue any abatement notices or infringement notices in relation to such impacts.

**Good:** Likely or actual adverse effects of activities on the receiving environment were negligible or minor at most. There were some such issues noted during monitoring, from self-reports, or during investigations of incidents reported to the Council by a third party but these items were not critical, and follow-up inspections showed they have been dealt with. These minor issues were resolved positively, co-operatively, and quickly. The Council was not obliged to issue any abatement notices or infringement notices in relation to the minor non-compliant effects however, abatement notices may have been issued to mitigate an identified potential for an environmental effect to occur.

For example:

- High suspended solid values recorded in discharge samples however, the discharge was to land or to receiving waters that were in high flow at the time;
- Strong odour beyond boundary but no residential properties or other recipient nearby.

**Improvement required:** Likely or actual adverse effects of activities on the receiving environment were more than minor, but not substantial. There were some issues noted during monitoring, from self-reports, or during investigations of incidents reported to the Council by a third party. Cumulative adverse effects of a persistent minor non-compliant activity could elevate a minor issue to this level. Abatement notices and infringement notices may have been issued in respect of effects.

**Poor:** Likely or actual adverse effects of activities on the receiving environment were significant. There were some items noted during monitoring, from self-reports, or during investigations of incidents reported to the Council by a third party. Cumulative adverse effects of a persistent moderate non-compliant activity could elevate an 'improvement required' issue to this level. Typically there were grounds for either a prosecution or an infringement notice in respect of effects.

### Administrative performance

**High:** The administrative requirements of the resource consents were met, or any failure to do this had trivial consequences and were addressed promptly and co-operatively.

**Good:** Perhaps some administrative requirements of the resource consents were not met at a particular time however, this was addressed without repeated interventions from the Council staff. Alternatively adequate reason was provided for matters such as the no or late provision of information, interpretation of 'best practical option' for avoiding potential effects, etc.

**Improvement required:** Repeated interventions to meet the administrative requirements of the resource consents were made by Council staff. These matters took some time to resolve, or remained unresolved at the end of the period under review. The Council may have issued an abatement notice to attain compliance.

**Poor:** Material failings to meet the administrative requirements of the resource consents. Significant intervention by the Council was required. Typically there were grounds for an infringement notice.