



# Pukeiti NEWSLETTER

Pukeiti Rhododendron Trust Inc.

**AGM  
SPRING  
MEETING**  
at Hollard  
Gardens  
See pg4

[www.pukeiti.org.nz](http://www.pukeiti.org.nz)



R. 'Sir Russell Matthews'

The area around the old Gatehouse and along the Pukeiti Drive presently looks like a bomb site; but the appearance belies the extensive work which is underway. The construction extending and upgrading the Gatehouse to the new Rainforest Pavilion which when completed will include a café, public facilities and interpretation centre is in full swing. This required all the planting which once surrounded it to be removed, leaving the place bare. When completed a walkway from the Pavilion will lead to the Vireya House which replaces the former Covered Walk. Landscaping in the Vireya House is almost complete with the installation of the watering system in preparation for the planting which should be completed by next autumn. This grand- looking modernistic steel structure,

which will be softened by a carpet of green when planted, now includes a new elevated walk through the bush to view the Waterwheel; a pond, featuring fish native to the surrounding streams, and over it a 'bush hut' similar to others constructed throughout the property much to the delight of visiting children; aquaria displaying these fish in the Kokopu House and adjacent to this a classroom space, the Publitz Education Centre. Education is an aspect of growing importance at Pukeiti which last year hosted over 800 school children in a variety of out-door education activities related to the National Curriculum. The entrance and most of the buildings are roofed allowing access even on the wettest of days – and there are plenty of those at Pukeiti.

In addition to this work the newly laid out Founders' Garden has been grassed but is badly scoured by heavy rain after planting. And over on the lawn ridge the run-off from the rain has also left 'gullies' in the newly grassed area. This is the sloping edge of the Misty Knoll, which has an innovative design including a secret garden accessed by a short tunnel. It is presently being planted out and will provide another interesting feature for visitors especially when the walls of azaleas covering the sloping entrance and the scent of the *Maddenia* in the 'secret garden' fills the air of the crater-like centre of the Misty Knoll.

The all-weather tracks, which enable the buggy (a boon to the less able visitors) to be driven around plantings, have been extended to the Keiller Garden allowing all developed areas to be accessed, and providing during wet weather a dry path for all to enjoy the planted sections of Pukeiti.

The garden has not been left off the work schedule despite the staff having to focus on the new projects, and the main areas will look great in the spring. Even now at spring's beginning the large leafed rhododendrons are presently in full picture-perfect bloom and worth a visit.

Work has also proceeded on the computerising of the plant records and it is planned to have the collection details available on the web for ready access by all.

Lastly, but not least, work has begun on planning for the replacement Lodge. Architects were asked to present plans on a brief jointly agreed to by the TRC and Trust. Representatives of each of the partners have considered the various proposals and are in the process of selecting the best solution to meet the needs of all, taking into account possible future uses. Once the architect has been contracted, details fleshing out the proposed design will be determined by all representatives working together. Construction is planned for the next financial year.



Allan and Graham inspecting the new planting at the Misty Knoll

# Member's Activities

SATURDAY, SEPTEMBER 24

## SPRING MEMBERS' DAY AND AGM:

this will be held at

*Hollard Gardens*

We are taking advantage of the fact that Pukeiti is in a state of flux this year, and holding our AGM at Hollard Gardens, which will give us an opportunity to see this wonderful property again.

**A FREE BUS** will be put on to transport members to and from the meeting. The bus will leave from the car park beside the TSB Stadium, 1 Rogan Street. Your cars can be left here whilst you are away.

### THE DAY'S PROGRAMME

**9:45:** Having parked your car in the TSB Stadium carpark, board the bus for Hollards.

**11:00am :** Guided Walk – The Hollard Gardens' staff will guide us around the garden which will be full of colour at his time of the year.

**12:00noon:** Lunch – Members are invited to a pot luck lunch at the Hollard Centre. Please bring finger food for a shared meal. Tea and coffee will be provided.

**1:30pm:** Annual General Meeting in the Hollard Centre.

**2:30pm:** Presentation by Greg Rine on the developments occurring at Pukeiti.

The bus will return to New Plymouth by 4:30pm. As we will be travelling by bus and our food will be in the hold, please ensure that the food is well wrapped and in a container that will not tip over in transit.

### BOARD ELECTION 2016

Board members Lynn Bublitz and Neville Stewart retired by rotation this year. Nominations for these two vacant positions on the Board have been received for both retiring members and as there were no others received they are declared members for another three year term.

### NOTICE OF MOTION TO BE CONSIDERED BY THE AGM

'That the Pukeiti Rhododendron Trust Inc. Board be increased by one additional member and that member be the person holding the position of Chairperson of the Members' Committee of the Pukeiti Rhododendron Trust and that the appropriate wording be added to the Trust Deed.'

SUNDAY OCTOBER 16.

# GARDEN VISITS

Members are invited on a garden safari visiting five members' gardens in the New Plymouth area.

### PROGRAMME

**10:45am** Meet at Jenny Johansen's garden, 88 Belt Road.

**11:30am** Meet at Alan Jellyman's garden, 48A Dorset Avenue. Park on the road and walk down the drive to Alan's garden observing the interesting plantings on your way.

**12:15am** Meet at Bev & George Moratti's floriferous townhouse garden. 15A Dorset Ave.

**1 pm** Head across to 195 Govett Avenue for lunch and a look at Rene and Alistair Duncan's garden.

**2:30pm onwards** Finish the day's safari at the garden of Lynn and Robin Bublitz, 27 Durham Avenue.

Bring your own food and a mug for lunch (tea and coffee will be provided) + a bottle to finish the day if you wish. (Glasses will be provided.)

WEDNESDAY, SEPTEMBER 28

# WORKING BEE

This is the last working bee before the start of the Festival and the Garden Staff would love lots of members to turn up and help them tidy the gardens. There is so much construction work going on and it would be great if we could help the staff get those areas not under construction looking extra good in preparation for the influx of visitors come October.

If members would like a lift, contact Heather and she will endeavour to match you up with someone close to you. Please bring light gardening implements such as a weeder and secateurs + a bucket for rubbish if possible.

## Volunteering for Labour weekend and the Garden Spectacular – 2016.

The carpark has been redeveloped, and there is now no shortage of parking spaces. This means that the TRC does not require members to help with car parking at busy times.

This year there will be no Gatehouse, no flower display and no Lodge. This temporary situation means there is nowhere volunteers can rest or shelter from inclement weather, so the TRC does not feel it is possible, this year, to use volunteers to meet and greet visitors as they arrive. Thus we will not be calling on our pool of willing volunteers to help over these periods.

Rest assured, should the situation change, your good services, friendly smiles and historical knowledge will again be called upon.

## Staff Changes

Diane Jordan has resigned from the position of secretary to the Trust but will continue as a member and secretary of the Members' Committee. Diane's work throughout the many years of service as the Pukeiti Trust Secretary has been exemplary and all are grateful for the many hours given to ensure the smooth running of the organisation. The position is still to be permanently filled.

Changes have had to be made to our email address which is now: pukeiti@pukeiti.com. The old email address will be picked up at the new site. Please address any enquiries to either Heather or Lynn. The postal address remains unchanged.

## The Weather

Weather always seems to be a talking point. The high rainfall at Pukeiti, usually over 4m per annum, when relayed to visitors raises an eyebrow.

The year so far has provided some interesting figures compared with previous ones:

Rainfall to date is 2060mm which is 72% of what fell in the same period last year but is 200mm more than in 2014. Both June and August have had only one half of the previous years' totals but July slightly more.

Temperatures for August also make interesting reading. Minimum temperatures have been much the same as previous years but maximums are a different story.

In

**2014.** 12 days received a maximum greater than 12 degrees and the highest temperature of 14 degrees occurred on 4 days.

**2015.** There was only one day over 12 degrees and that was 13 degrees only.

**2016.** 18 days had maximums greater than 12 degrees and there were 6 days over 15, and the hottest days were 20 and 23 degrees.

Evidence of climate change is also noticed by an increasing infestation of thrips which were for many years absent from Pukeiti. They enjoy the relatively hotter drier summers and autumns which are also becoming more apparent. No doubt other pests and diseases will be on the increase in all our gardens as the climate continues to change.

## EARLY SEPTEMBER AT PUKEITI



*R. 'Gordon Collier'*



*R. protistum*



*R. arboreum* This was grown from seed collected by Ron Gordon.



Unnamed *R. Vireya* hybrid

## Members' Activities

### VOLUNTEERS NEEDED

Your members' committee needs more assistance in staging our organised events such as: Plant packing • Setting up for events and cleaning up afterwards • Transport of older members to events • Maintenance of the members' database • Working Bees and other activities. The committee meets 4 times a year. If you think you can help out or become a committee member, please contact Heather (06 757 2460) or Diane (06 7522800).

### WORKING BEES

WEDNESDAY, SEPTEMBER 28

WEDNESDAY, NOVEMBER 23

SATURDAY, DECEMBER 10

9am  
Start  
meet at  
Propagation  
area



#### MEMBERS' COMMITTEE MEETINGS

Tuesday, November 15 – 9:30

#### BOARD MEETINGS

Friday, September 23 - 6pm  
at Govett Quilliam Offices

#### SPRING MEMBERS' DAY & AGM SATURDAY, SEPTEMBER 24

### SATURDAY DECEMBER 10 END OF YEAR BBQ ALL WELCOME

This year the BBQ will be held at Tupare. As is usual, the Pukeiti Rhododendron Trust will provide the meat and buns. Please bring a salad or finger food to accompany the food provided.

Please book with Heather on (06) 7572460 or Diane (06) 7522800 by Thursday, Dec 08

### The Memoirs of our Patron – Gordon Collier

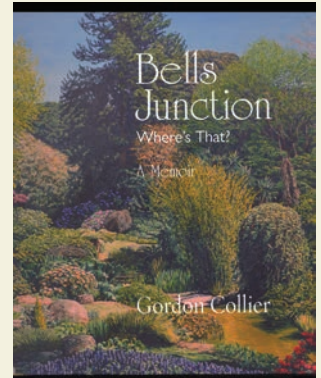
Gordon has written a book of memoirs which will appeal to many of our members.

Mainly designed for his grandchildren, the book includes several chapters of tales which will be of special interest. These are the chapters on his experiences at New Plymouth Boys' High School, Tupare, Titoki Point and Pukeiti. The final Chapter on his retirement to

and the development of his Taupo property, Anacapri, is the only chapter that concentrates mainly on plants.

The book is wonderfully illustrated and is available by private sale. For \$50 including P+P within New Zealand.

Order through Gordon Collier, Anacapri, 6 Mahuta Rd, Taupo 3378. Please include a cheque made out to G Collier with your order, Thank You.



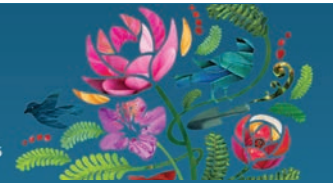
### OTHER ACTIVITIES

#### SUNDAY, OCTOBER 16

A selection of members' gardens which are not normally part of the festival will be open for members to visit. *Details elsewhere*

POWERCO  
TARANAKI  
**Garden  
SPECTACULAR**  
New Zealand's Premier  
Spring Festival

TARANAKI  
28 Oct – 6 Nov 2016



FRIDAY, OCT 28 – SUNDAY, NOV 06

#### MID- LATE NOVEMBER

Proposed Members' trip to the Auckland area gardens.  
*See insert.*



**Pukeiti**

Pukeiti Rhododendron Trust Inc.

Postal address: PO Box 1066  
New Plymouth 4340

Location: 2290 Carrington Rd. RD4

Secretary  
to be advised

Chairperson  
Gordon Bailey gordonbaileynz@gmail.com



TARANAKI  
Regional Council

[www.pukeiti.org.nz](http://www.pukeiti.org.nz)  
is worth a look!

TARANAKI REGIONAL COUNCIL

[www.trc.govt.nz](http://www.trc.govt.nz)

Office hours	Mon-Fri 8am - 5pm	Environmental hotline	0800 736 222
Postal address	Private Bag 713, Stratford 4352	Regional gardens	regional.gardens@trc.govt.nz
Location	47 Cloten Road, Stratford 4332	Greg Rine	Phone: (06) 765 7127 Mobile: 027 240 2470
Phone	0800 736 222 (06) 765 7127	Andrew Brooker	Phone: (06) 765 7127 or Phone (06) 752 4141 Mobile 0210 264 4060
Email	info@trc.govt.nz		

# An Early Summer trip to the Auckland Area

Transport in an air conditioned coach.

Stay four nights in hotel style accommodation, two in the Papatoetoe area and two in Auckland.

Visit a total of 10 gardens – assuming Auckland traffic allows – including 1 Garden of International Significance; 4 Gardens of National Significance and 3 Significant Gardens as classified by the NZ Garden Trust.

Because of our association with Pukeiti, there will be reduced charges at many of the gardens we will be visiting, and we will be provided with expert guides.

## Day 1: Sunday, 20 November 2016.

Depart from New Plymouth. Morning tea in Pirongia or thereabouts. Then continue on to the Hamilton Gardens. “Telling the story of gardens through themed garden collections, Hamilton Gardens explores different civilisations and recreates historically important garden styles from the farthest reaches of the world. Visitors are guided on a journey of discovery along paths leading to mysterious surprises: step from a peaceful Sung Dynasty Chinese Scholar’s garden into an Italian Renaissance Garden, before being enthralled by the grandeur of the Indian Char Bagh Garden. Hamilton Gardens has 21 themed garden areas with more being developed. Hamilton Gardens is not a botanical garden. Instead, its unique and internationally recognised concept has been compared to a museum. Each garden collection has historic integrity and provides a window into the story of civilisations, their arts, beliefs and life styles”. [www.gardenstovisit.co.nz](http://www.gardenstovisit.co.nz). [www.hamiltongardens.co.nz](http://www.hamiltongardens.co.nz)

We will be given a guided tour of the enclosed area which will cover the 21 themed gardens prior to lunching in the garden café. After lunch we will spend half an hour in the rose garden before boarding the bus and travelling the short distance to the Zealong Tea Estate at Gordonton, purveyors of fine organic teas to places of distinction such as Harrods. Here we will take the guided Tea Walk, learn the fascinating story behind Zealong, see how tea is made, experience a traditional tea ceremony, discover tea’s rich history and culture, and relax over a cup of the world’s purest tea, with stunning views over the only tea plantation in New Zealand. [www.zealong.com](http://www.zealong.com)

Afterwards we will drive to our hotel in Papatoetoe.

## Day 2: Monday, 21 November

We will leave our hotel and drive to Ayrliès, Bev McConnell’s wonderful Garden of International Significance. Here we will be treated to a garden tour by Bev McConnell herself. This

will be a far more relaxing day with a leisurely morning spent in the wonderful garden that Bev has established. After our guided tour we will drive the short distance to our lunch spot in Whitford, before returning to Ayrliès to view the wetland area and, for those so wishing, a walk around it. [www.ayrliès.co.nz](http://www.ayrliès.co.nz)

We then return to our Papatoetoe hotel for the second night.

## Day 3: Tuesday, 22 November 2016.

After checking out of our Papatoetoe Hotel we will drive to the Auckland Botanic Gardens where either Jack Hobbs or Bec Stanley from the managerial team will show us around the areas of interest. [www.aucklandbotanicgardens.co.nz](http://www.aucklandbotanicgardens.co.nz)

We will then drive into Auckland and to the award winning Eden Garden in Epsom. After lunch we will be provided with a map and make our own way around the garden visiting those areas that each person is most interested in. [www.edengarden.co.nz](http://www.edengarden.co.nz)

After seeing this garden we will go next door to Auckland Government House, the residence of the Governor General when in Auckland. Lee Chandler, who is the head gardener will show us through the gardens. [www.gg.govt.nz](http://www.gg.govt.nz)

On completion of this visit we will check into our Auckland hotel, where we will spend the next two nights.

## Day 4: Wednesday, 23 November 2016.

Drive to the Coatesville area where we will spend the day visiting 3 neighbouring gardens.

We will start the day at Garden on the Ridge, which, as the name implies, sits astride a ridge and so has fantastic 360° views of the Auckland isthmus. Although it is a large garden and the paths are grassed it is a family garden rather than a park and as such has a vegetable and herb garden and orchards.

But it also has rose beds, multitudinous types of iris, succulents, vireyas, camellias, magnolias, bulbs, clivias, sub-tropicals all planted in generous amounts, and joy of joys long borders in the English style which isn’t surprising given that Christine and her husband are of English heritage.

From here we go the short distance to À La Fois. An easy stroll from the road will take us down into a garden where native and exotics are planted to complement each others’ form and foliage and to create enjoyable vistas. The garden has been planted to provide year round interest with many vireyas and large plantings of grevilleas. The owners will give us a guided tour of their garden but for those tour members

starting to feel the effects of the distances walked over the last three days, there’s lots of seating around the house where one can sit and take in the view of the pond below. They will also provide a ride back up to the road for anyone who would prefer this to walking. But that would be after lunch because this is also our lunch stop. [www.gardenstovisit.co.nz](http://www.gardenstovisit.co.nz)

Our third garden of the day is Mincher. Mincher differs from the previous two gardens in that it is not on the ridge but nestled into the valley so it is level and easy walking. Over the past 24 years Angela and Bruce have taken this property from a wasteland of blackberry and gorse to a Garden of National Significance. In the process they have built two residences, glasshouses, a walled garden and of course done extensive planting to make a garden well worth visiting. After a guided walk of their garden and a light afternoon tea we will return to our Auckland Hotel for our final night. [www.coatesville.org.nz](http://www.coatesville.org.nz)

Day 5: Check out of our Auckland hotel and drive to the Auckland Domain for our final garden visit – The Auckland Domain Wintergardens. [www.gardens.org.nz](http://www.gardens.org.nz)

After this we return to our bus for the trip home, stopping for lunch and afternoon tea on our way.

**Indicative price \$1, 290pp twin share. \$400 single supplement. Included in price is transport, entrance fees, guided walks, 4 breakfasts, 5 lunches, 4 dinners and 4 nights’ accommodation.**

Please note that the itinerary will be adhered to as closely as possible but may have to change if the problems of Auckland’s traffic delay us at any stage.

If you are interested in joining this trip in New Plymouth or elsewhere on the route, please contact Heather (06) 757 2460 or email: [h.robson@xtra.co.nz](mailto:h.robson@xtra.co.nz) by 24th September. If I have sufficient interest for the tour to proceed, I’ll be asking for a non-refundable deposit of \$500 to be paid by the end of September so I can reserve hotel accommodation. Auckland hotels are reluctant to quote for rooms and meals until the rooms are reserved and they won’t do this unless they have a substantial non-refundable deposit. At this point I’ll be able to work out a more accurate final costing for the tour but I anticipate it will be equal to or less than what is estimated rather than more.



# INTO THE MIDDLE OF THE WORLD

A THREE WEEK JOURNEY - SEPTEMBER 2017  
INCLUSIVE COST (APPROX) NZD \$6,900

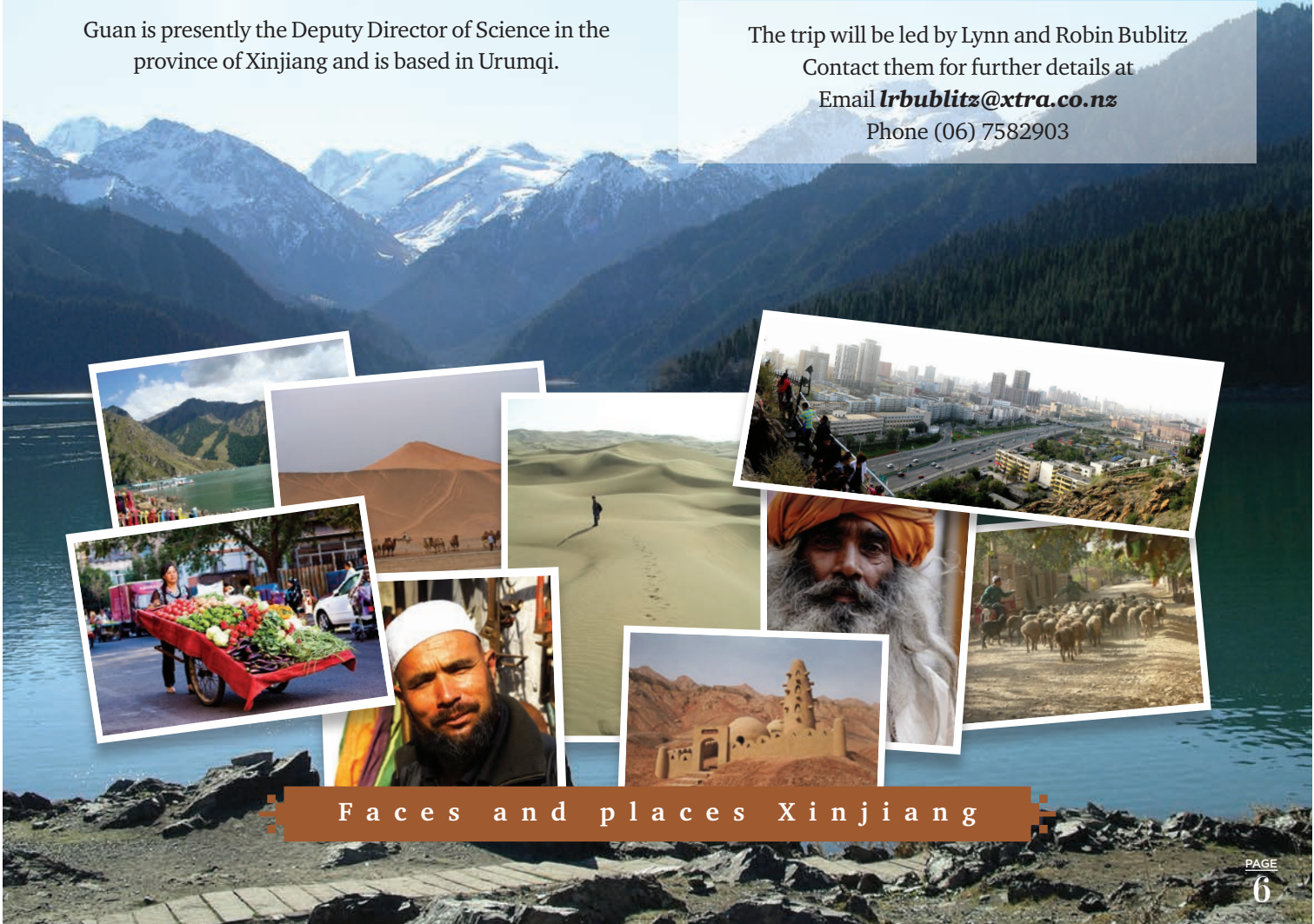
Guan Kaiyun who has arranged many tours for Pukeiti has organised a 3 week adventure to the outer reaches of China in the Xinjiang Province, visiting historical sites and travelling through the desert and into the surrounding mountains.

Guan is presently the Deputy Director of Science in the province of Xinjiang and is based in Urumqi.

If you are interested in sharing in this unique adventure search 'Google' for a look at the cities and places that will be visited including Urumqi, Fuyun, Yining, Kashgar and Turpan, and places which were on the old silk route which we follow for part of the journey.

We plan to fly to Urumqi via Guangzhou. Travelling in Xinjiang will be by comfortable bus and plane. You will be staying in good quality hotels. All meals will be provided.

The trip will be led by Lynn and Robin Bublitz  
Contact them for further details at  
Email [lrublitz@xtra.co.nz](mailto:lrublitz@xtra.co.nz)  
Phone (06) 7582903



Faces and places Xinjiang

This trip was postponed in 2014 because of troubles in the area. These have abated and we have been advised it is now safe to travel.