

Appendix II: High quality or high value areas of the coastal environment

Figures 7-19 below shows coastal areas identified in the Inventory of Coastal Areas of Local or Regional Significance in the Taranaki Region (2004). The Inventory includes important areas in the coastal marine area and in adjacent land within the coastal environment. Some of the areas in the coastal marine area have been identified as areas of outstanding coastal value in the Regional Coastal Plan for Taranaki (1997) while others where the landward component is predominant, have been identified in district plans. However, the coastal areas identified are not necessarily an exhaustive selection and, on occasion, other parts of the coast may have natural, ecological, or cultural values that are regarded as important to the region.

Taranaki is recognised nationally and internationally for its surfbreaks. Surfbreaks depend on the presence of a combination of suitable seabed shape, swell direction and power, swell corridors that allow swells to arrive at the surfbreak and wind direction and force. High quality or high value surfbreaks in Taranaki attract surfers from throughout New Zealand and overseas as well as locally. High quality or high value surfbreaks of regional importance are shown in Figures 7 to 19. The surfbreaks have been identified using the Council's inventory of Coastal Areas of Local or Regional Significance in the Taranaki Region (2004), the New Zealand Surfing Guide (2004) published by Wavetrack and by consultation with local surfers.

Key:

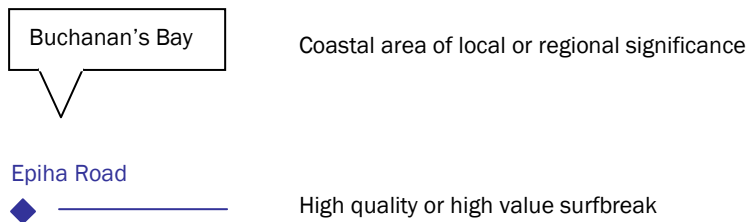




Figure 7 High quality or high value areas of the coastal environment - Epiha Reef to Pukearuhe

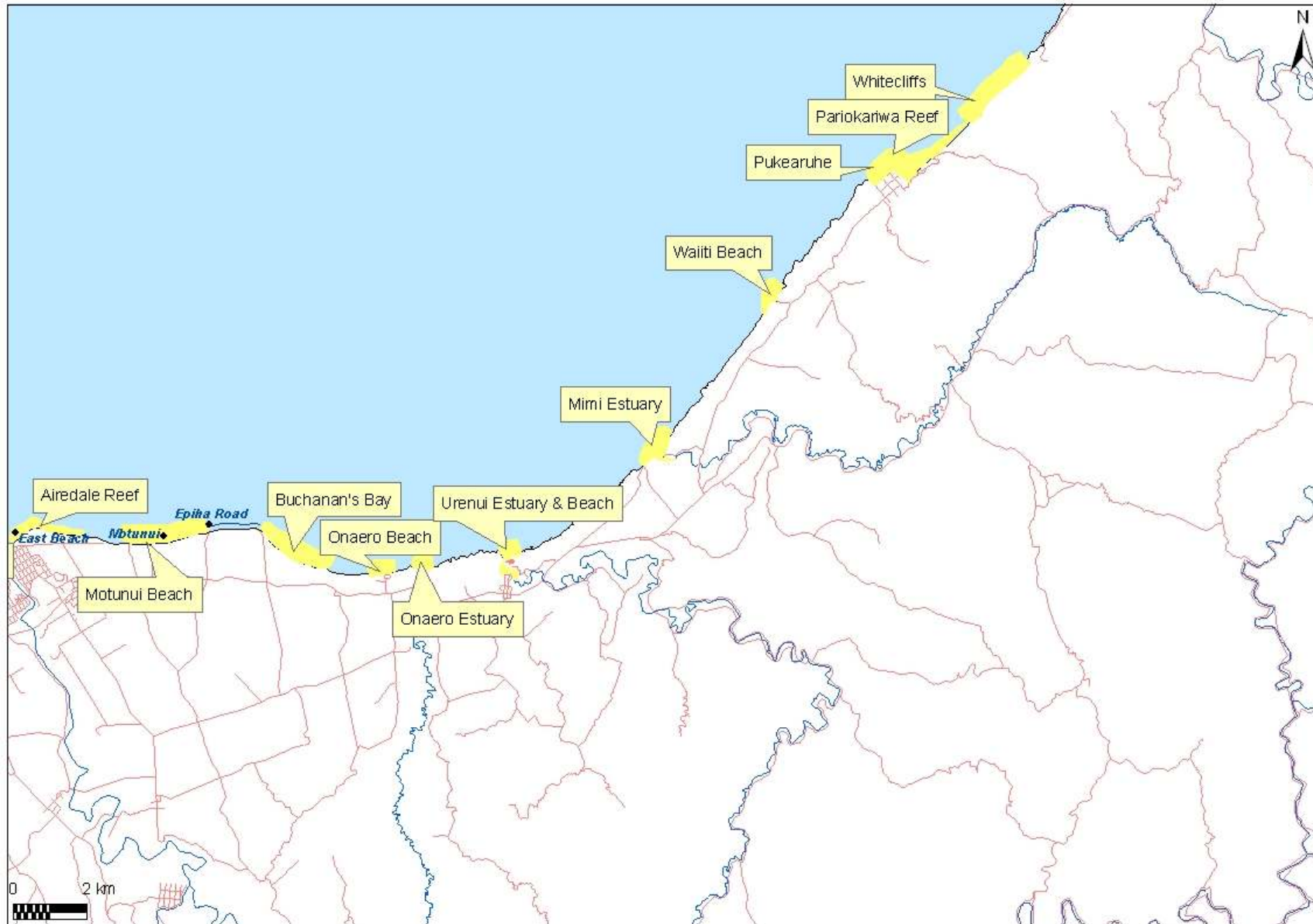


Figure 8 High quality or high value areas of the coastal environment - Whitecliffs to Airedale Reef



Figure 9 High quality or high value areas of the coastal environment - Airedale Reef to Waipunga Lagoons

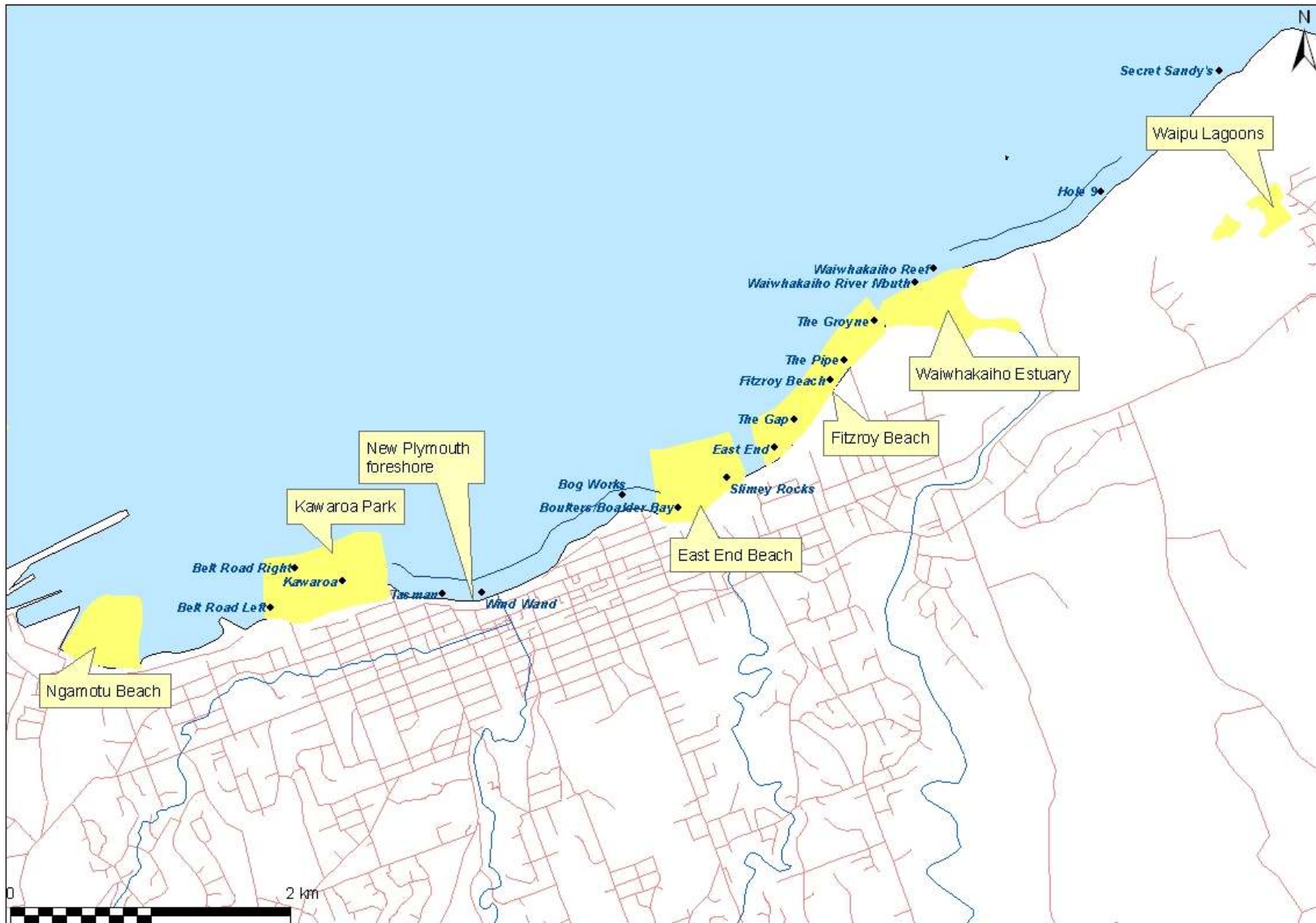


Figure 10 High quality or high value areas of the coastal environment - Waipu Lagoons to Ngamotu Beach

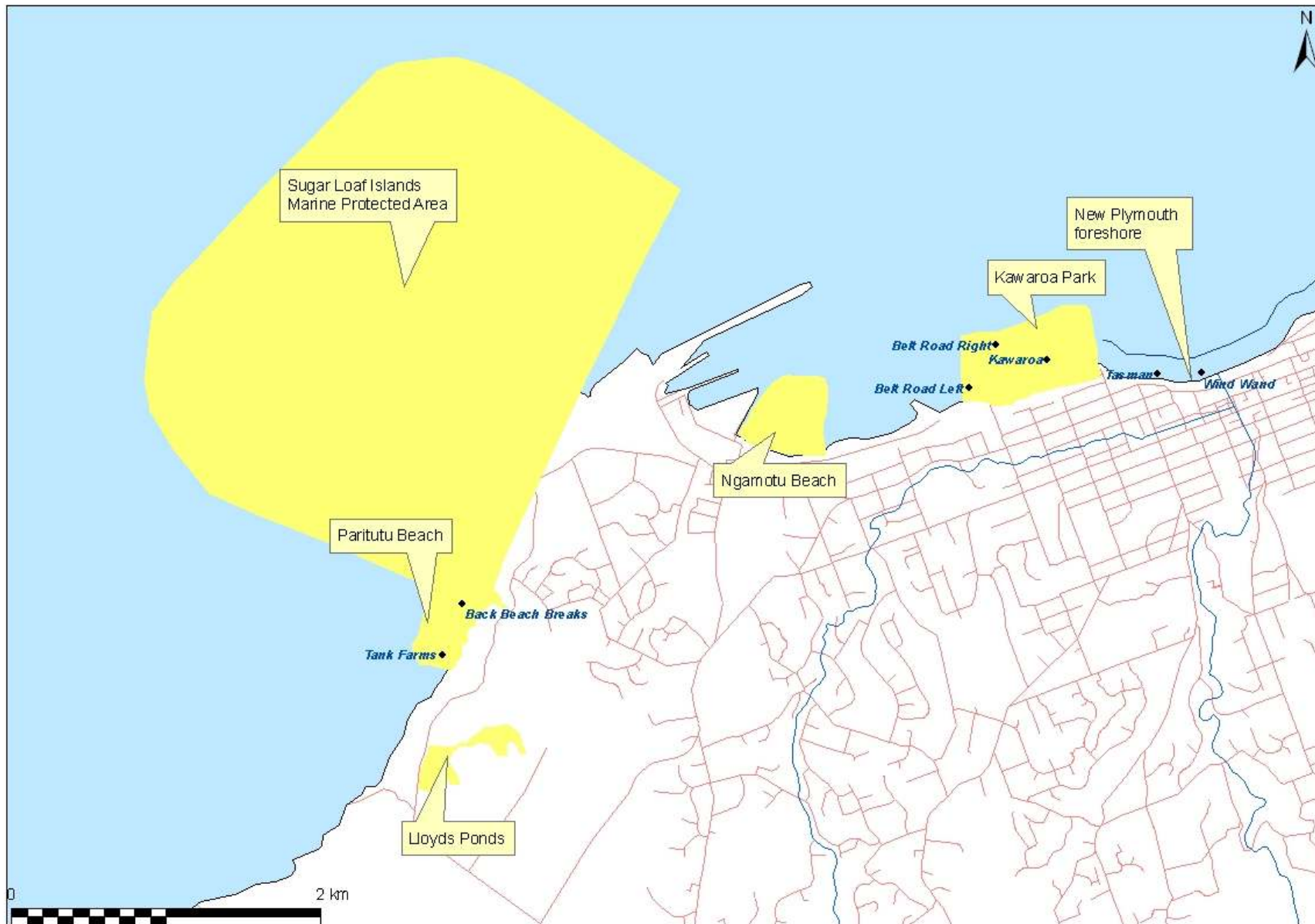


Figure 11 High quality or high value areas of the coastal environment - New Plymouth Foreshore to Lloyds Ponds

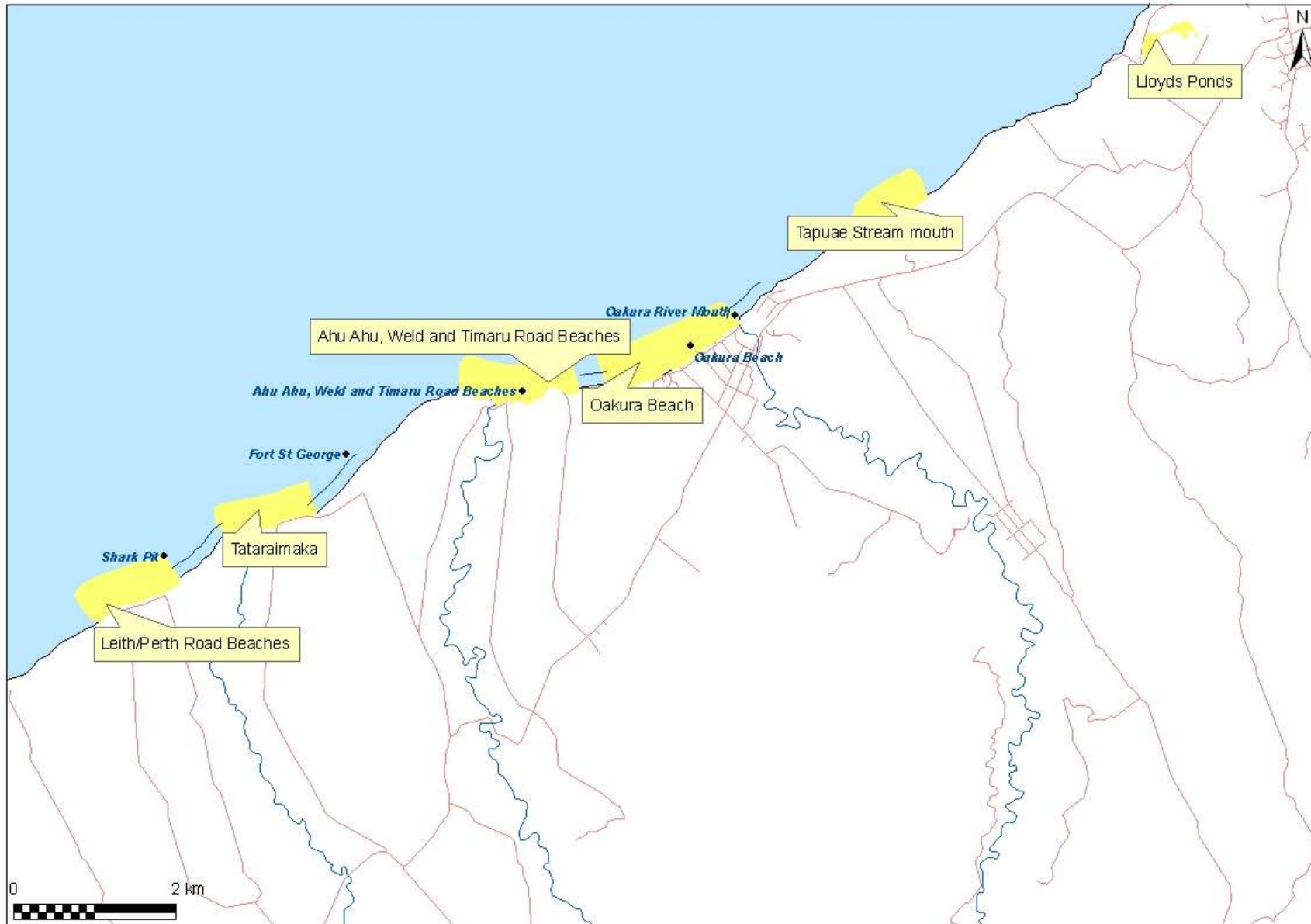


Figure 12 High quality or high value areas of the coastal environment - Lloyds Ponds to Leith/Perth Road Beaches



Figure 13 High quality or high value areas of the coastal environment - Leith/Perth Road Beaches to Bayly Road

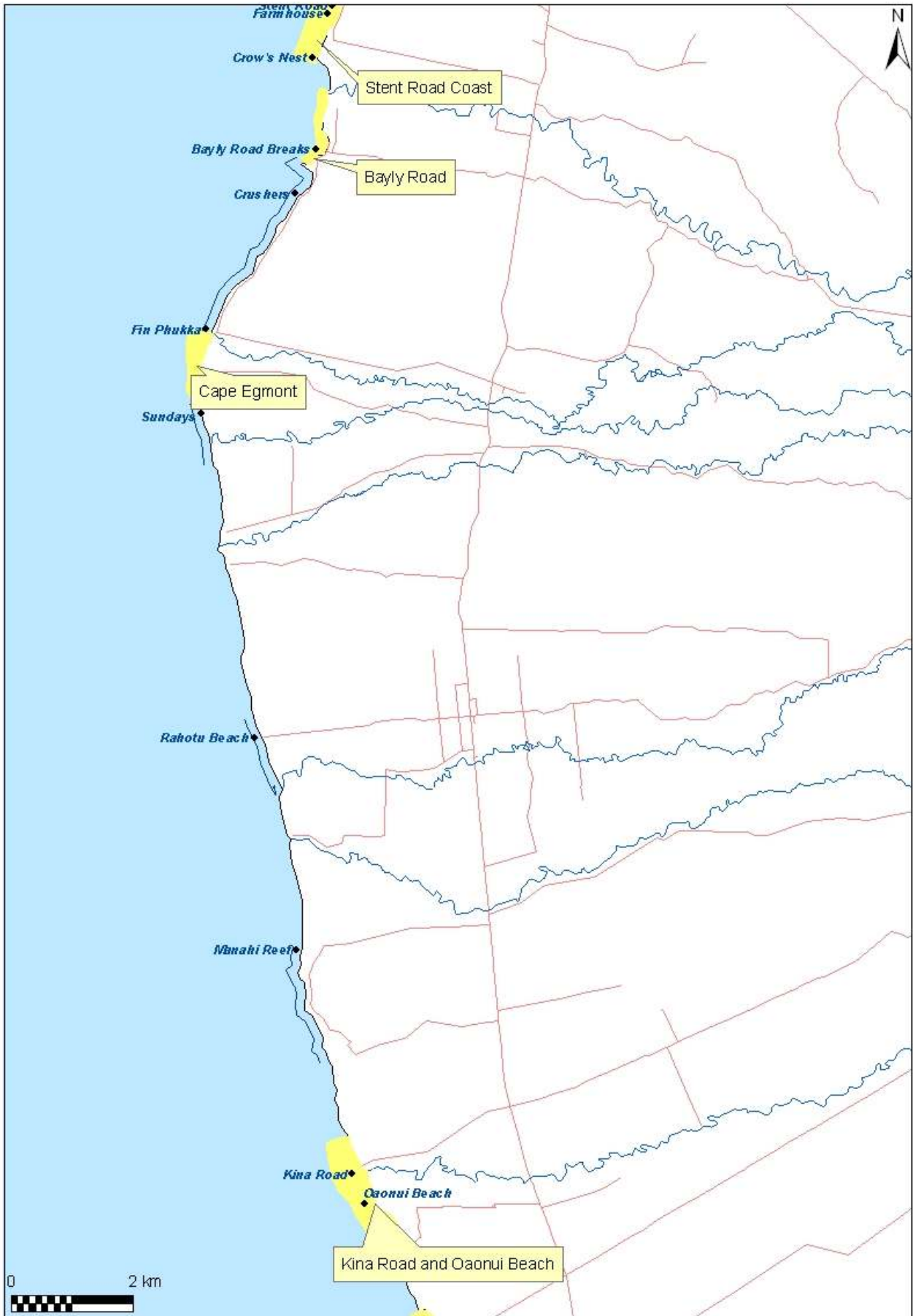


Figure 14 High quality or high value areas of the coastal environment - Stent Road coast to Kina Road and Oaonui Beach

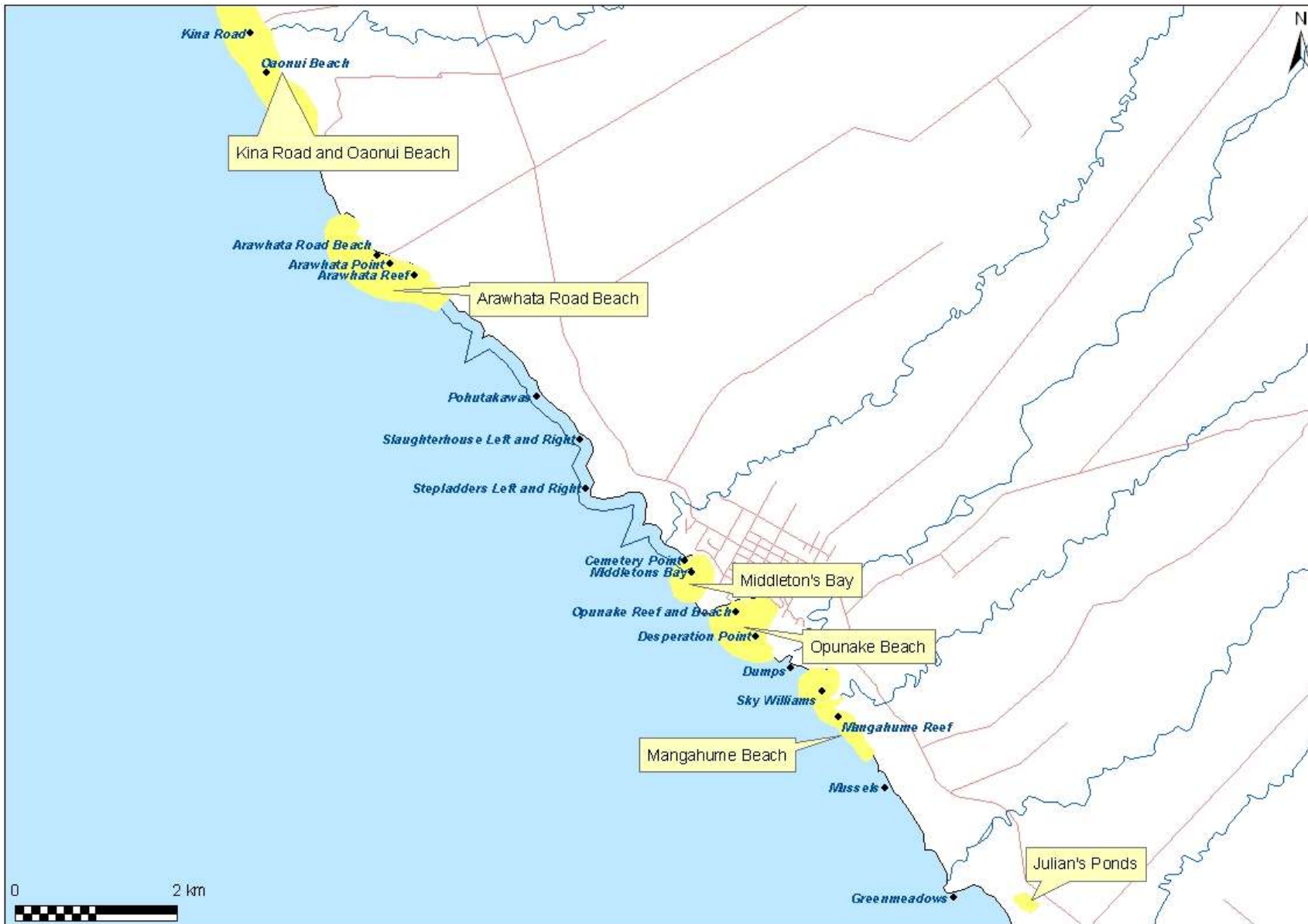


Figure 15 High quality or high value areas of the coastal environment - Kina Road and Oaonui Beach to Julian's Ponds



Figure 16 High quality or high value areas of the coastal environment - Julian's Ponds to Sutherland/Normanby Road Ends



Figure 17 High quality or high value areas of the coastal environment - Sutherland/Normanby Road Ends to Manawapou Road Coastal Lagoons



Figure 18 High quality or high value areas of the coastal environment - Manawapou-Tangahoe River Mouths and Cliff Tops to North and South Traps



Figure 19 High quality or high value areas of the coastal environment - Waipipi Dunelands to Waiinui Beach and Reef

