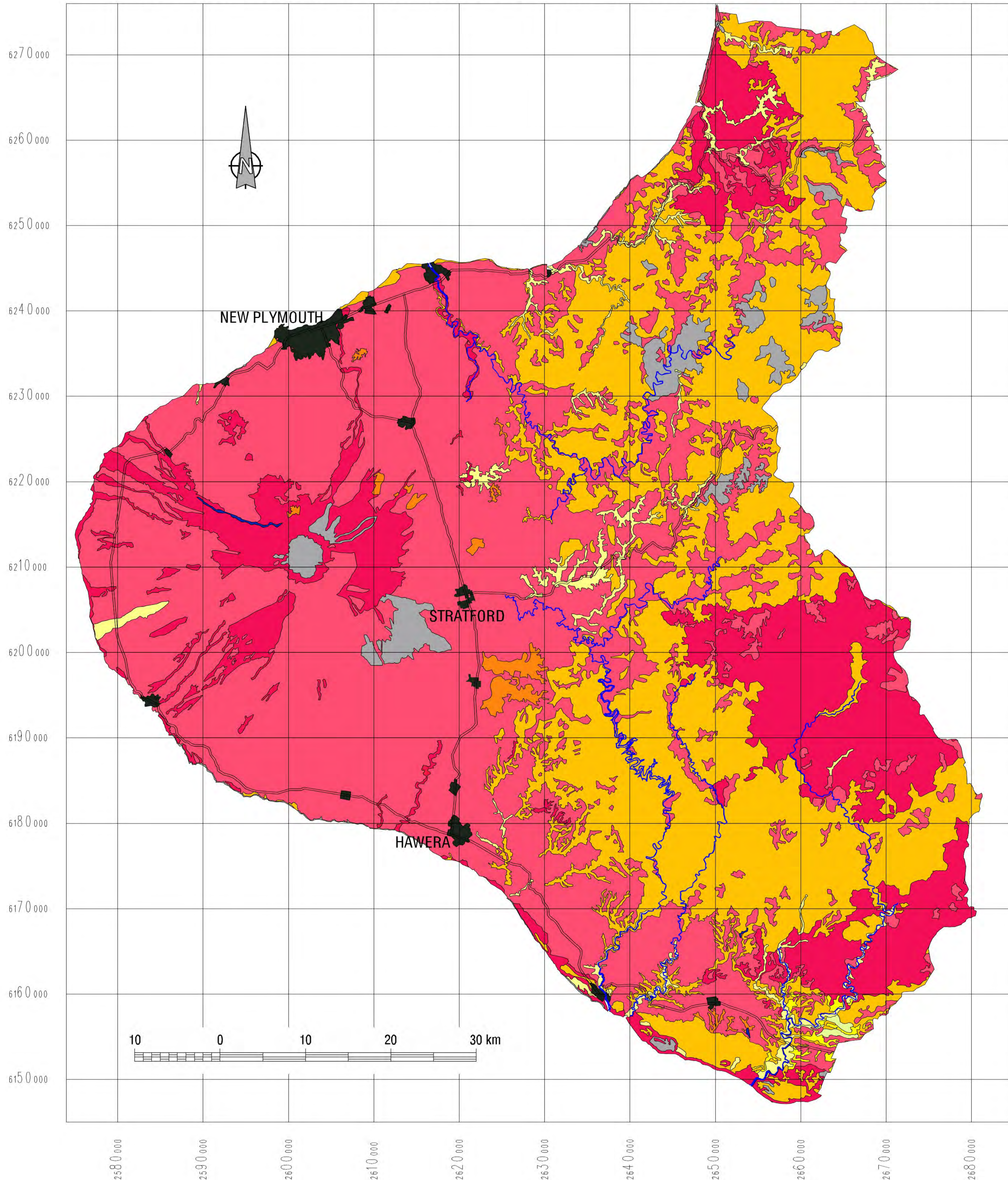


# TOTAL VANADIUM 0-20cm IN SOILS OF TARANAKI REGION





## LEGEND

Total Vanadium (mg/kg on oven-dry weight)

0-20cm depth	
Recent	250-550
Allophanic	150-300
Organic	150-250
Brown	50-230
Melanic	160-220
Gley	60-180
Pallic	50-100
Pumice Raw Mountain soil	No data

See accompanying notes on soil groupings and ranges of background metal concentrations

## Topographic Reference

-  Major roads
-  Major hydrological features
-  Urban



Manaaki Whenua  
Landcare Research

© Landcare Research New Zealand Ltd, 2002

Map Reference Code: /data/landcare-jobs/mas/heavymet/vananzsc20.gra