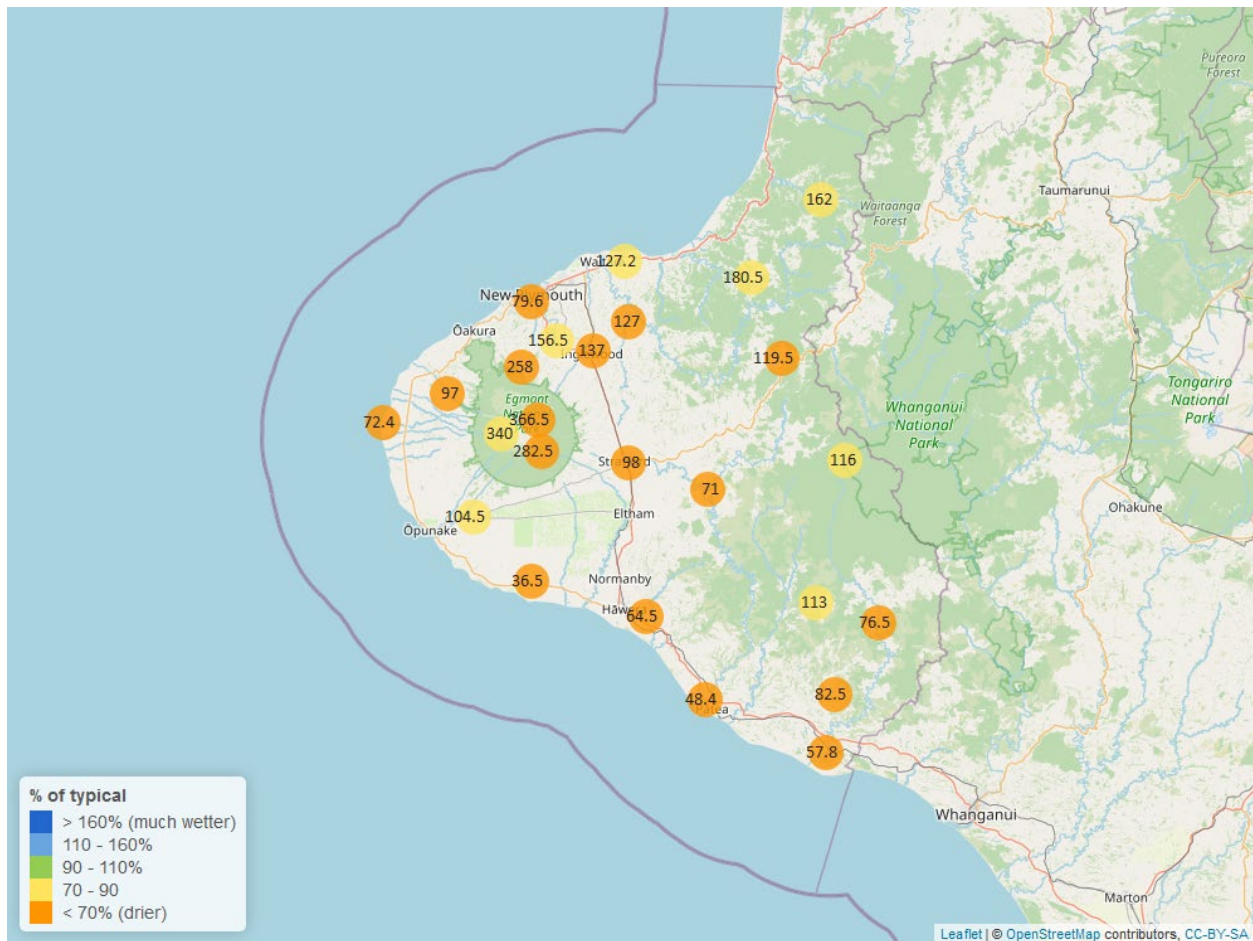


Taranaki Regional Council Monthly Rainfall and Environmental Data Report for December 2024

Note: The data presented here are provisional data only and may change as a result of quality control at a later date.

1. Rainfall

Map 1: December total rainfall (mm) and percentage of long-term mean (colour key).



Map 1a. Total rainfall 1 January to end December (mm) and percentage of long-term mean (colour key).

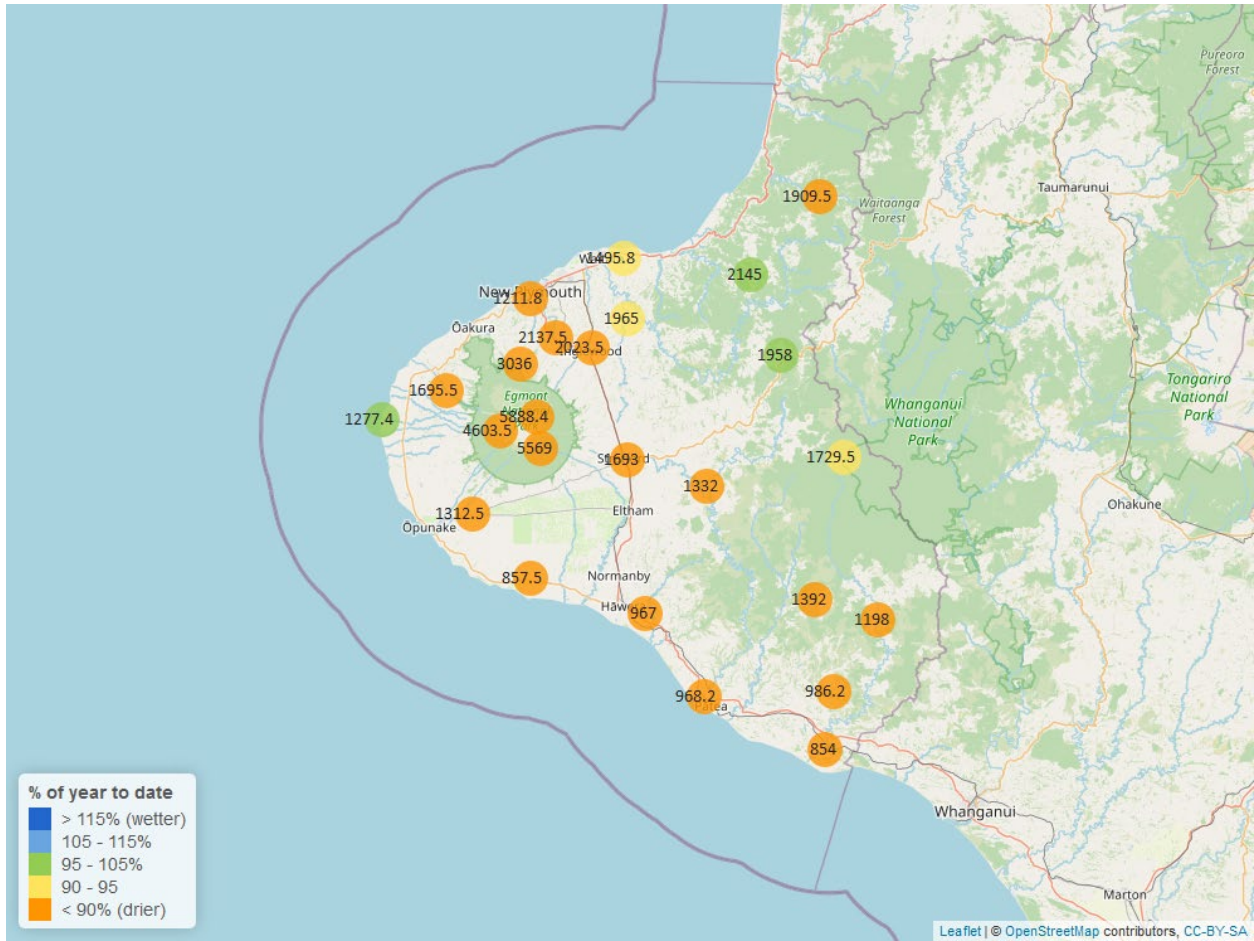


Table 1: Rainfall December and year to date totals for rain gauge sites in Taranaki.

| Rain gauge | December | | | Year to Date | | | Records Began |
|---------------------------------|------------------|-----------------|--------------------|--------------------|---------------------------|------------------------|---------------|
| | # days with rain | Total rain (mm) | % of typical month | Total to date (mm) | % of typical year to date | % of typical full year | |
| North Egmont at Visitors Centre | 15 | 366.5 | 61.6 | 5888.4 | 85.1 | 85.1 | 1995 |
| Dawson Falls | 14 | 282.5 | 58.5 | 5569.0 | 87.0 | 87.0 | 1999 |
| Kapoiaiaia at Kahui Hut | 15 | 340.0 | 86.5 | 4603.5 | 87.5 | 87.5 | 2006 |
| Mangorei Upper at Forest Hill | 14 | 258.0 | 67.9 | 3036.0 | 81.5 | 81.5 | 2018 |
| Waiwhakaiho at Hillsborough | 10 | 105.5 | 75.6 | 1506.0 | 82.3 | 82.3 | 2013 |
| Brooklands Zoo at New Plymouth | 11 | 79.6 | 64.5 | 1211.8 | 75.1 | 75.1 | 2012 |

| Rain gauge | December | | | Year to Date | | | Records Began |
|-------------------------------|------------------|-----------------|--------------------|--------------------|---------------------------|------------------------|---------------|
| | # days with rain | Total rain (mm) | % of typical month | Total to date (mm) | % of typical year to date | % of typical full year | |
| Motunui M39 at Weston W3 | 10 | 127.2 | 88.8 | 1495.8 | 94.8 | 94.8 | 1999 |
| Waiwhakaiho at Egmont Village | 10 | 156.5 | 71.1 | 2137.5 | 88.1 | 88.1 | 1995 |
| Manganui at Everett Park | 13 | 127.0 | 66.5 | 1965.0 | 93.5 | 93.5 | 1995 |
| Inglewood at Oxidation Ponds | 10 | 137.0 | 63.5 | 2023.5 | 85.9 | 85.9 | 2000 |
| Stony at Mangatete Bridge | 11 | 97.0 | 53.3 | 1695.5 | 84.6 | 84.6 | 2004 |
| Kapoaiiaia at Lighthouse | 10 | 72.4 | 62.0 | 1277.4 | 95.3 | 95.3 | 1999 |
| Taungatara at Eltham Rd | 10 | 104.5 | 76.8 | 1312.5 | 83.1 | 83.1 | 2005 |
| Kaupokonui at Glenn Rd | 8 | 36.5 | 36.6 | 857.5 | 73.3 | 73.3 | 1998 |
| Patea at Stratford | 11 | 98.0 | 61.2 | 1693.0 | 85.2 | 85.2 | 1999 |
| Mangaehu at Bridge | 10 | 71.0 | 52.4 | 1332.0 | 83.6 | 83.6 | 1999 |
| Kotare at OSullivans | 14 | 162.0 | 81.0 | 1909.5 | 88.5 | 88.5 | 1998 |
| Uruti at Kaka Rd | 12 | 180.5 | 80.4 | 2145.0 | 96.5 | 96.5 | 1995 |
| Pohokura Saddle | 10 | 119.5 | 64.5 | 1958.0 | 98.2 | 98.2 | 1995 |
| Omaru at Charlies | 14 | 116.0 | 78.8 | 1729.5 | 94.5 | 94.5 | 2006 |
| Omahine at Moana Trig | 16 | 113.0 | 85.0 | 1392.0 | 82.3 | 82.3 | 2007 |
| Waitotara at Rimunui Station | 12 | 76.5 | 63.7 | 1198.0 | 87.2 | 87.2 | 1995 |
| Waitotara at Ngutuwera | 10 | 82.5 | 68.8 | 986.2 | 76.5 | 76.5 | 1999 |
| Tawhiti at Duffys | 10 | 64.5 | 60.4 | 967.0 | 87.3 | 87.3 | 1995 |
| Patea at Bore 3 | 9 | 48.4 | 44.8 | 968.2 | 81.9 | 81.9 | 2006 |
| Waitotara at Hawken Rd | 10 | 57.8 | 60.5 | 854.0 | 72.0 | 72.0 | 2016 |

Notes: Low and high values in tables refer to the upper and lower 5th percentiles of the historic record for each site (except for wind gust and soil moisture which are the upper and lower 1st percentiles). Percentile values give a better indication of the general upper and lower range of the historic data against which to compare the current month. Start year (records began) shows the length of data used to compute historic highs, lows, and "typical values". Sites with a longer data record will generally provide a more reliable comparison to values in the current year.

1.2 Long-term data patterns

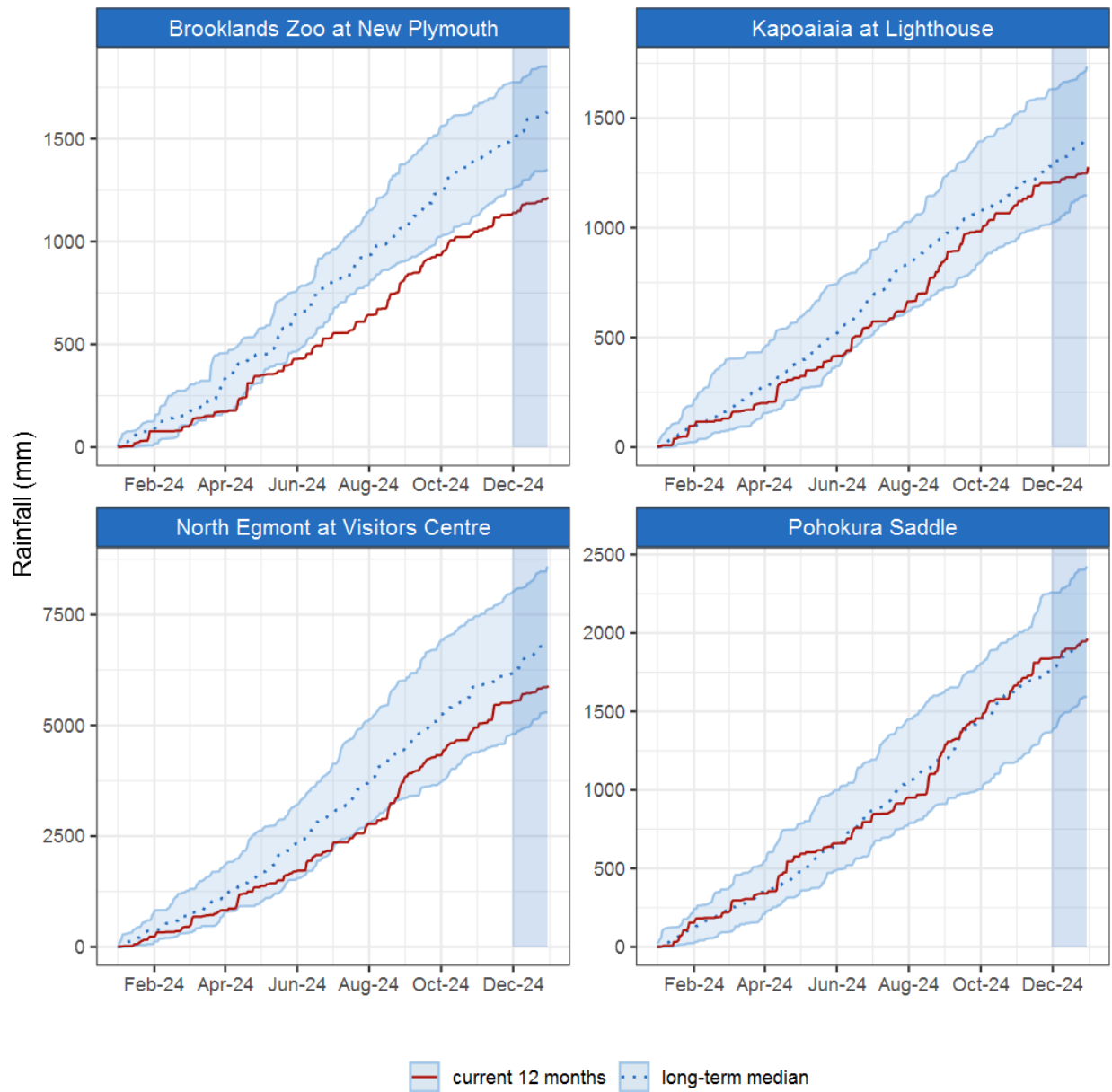


Figure 1.1: This year's and last year's data set in context of historic record at selected rain gauge sites in Taranaki.

1.3 Monthly Bar Charts

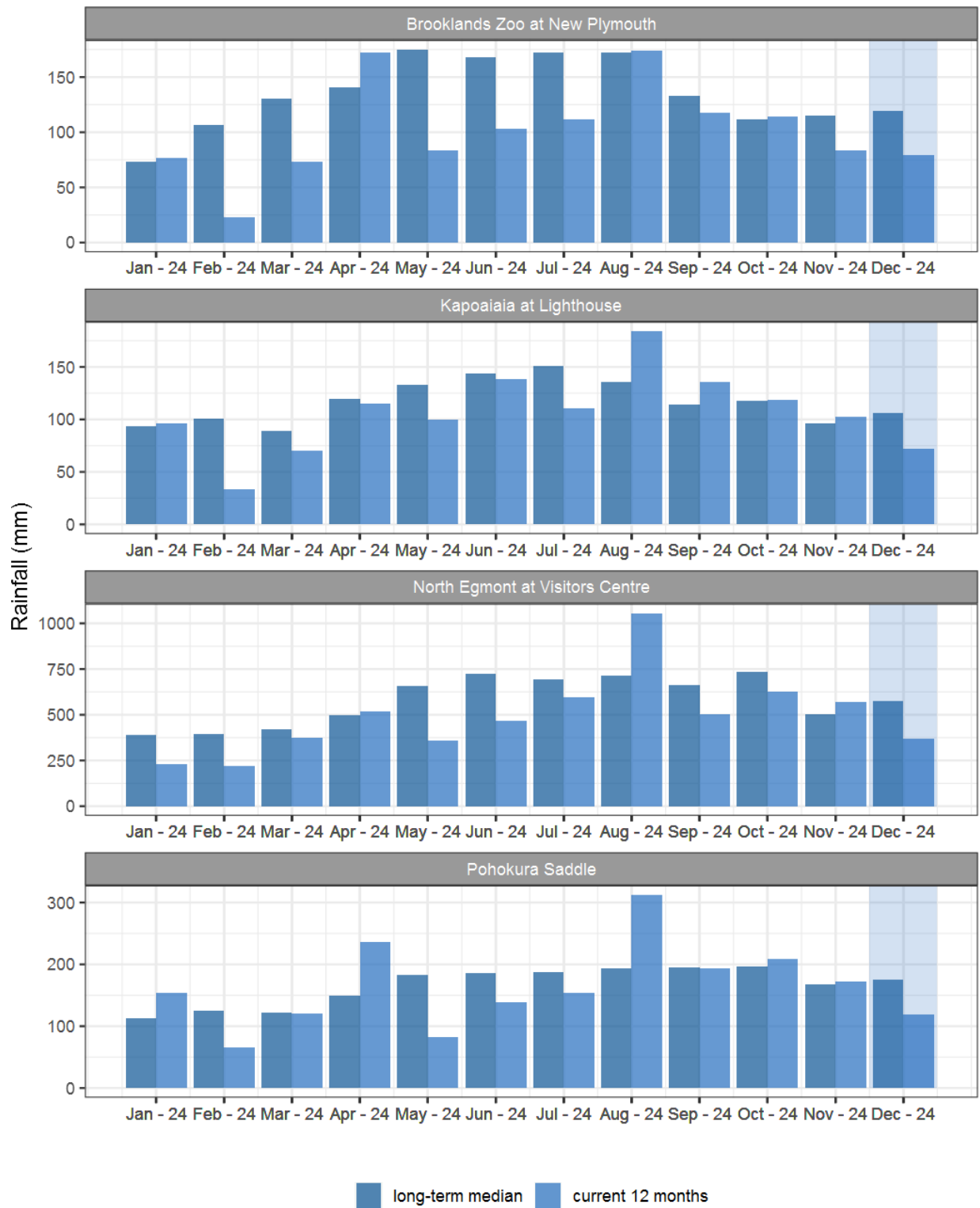


Figure 1.2: Monthly rainfall totals for this month and the mean of all previously recorded months.

2. River Flow

Map 2: December mean river flows (m³/sec), with difference as percentage of long-term mean.

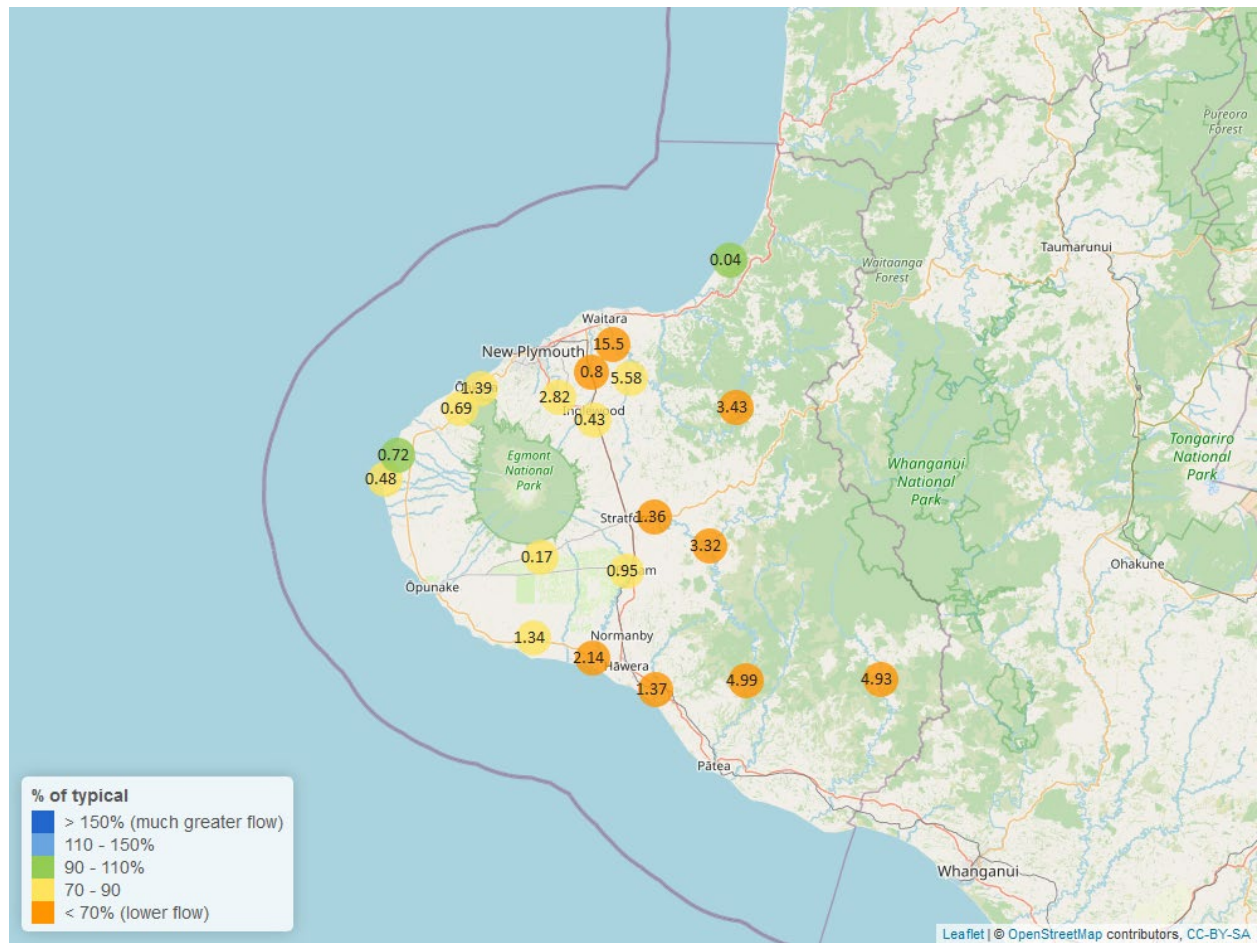


Table 2: Summary of high, low and mean flow for December and for December in all preceding years of record.

| December 2024 - Recorded flows (m3/sec) | | | | | | | | |
|---|---------------|----------|---------------|----------|---------------|----------|------------------|------------|
| River and Site | Highs | | Lows | | Mean | | December maximum | Data years |
| | current month | historic | current month | historic | current month | historic | | |
| Kapoaiaia at Lighthouse | 0.88 | 2.87 | 0.44 | 0.29 | 0.48 | 0.59 | 9.46 | 38 |
| Kaupokonui at Glenn Rd | 1.72 | 5.29 | 1.17 | 0.92 | 1.34 | 1.68 | 4.80 | 46 |
| Mangaehu at Bridge | 8.73 | 38.48 | 2.49 | 2.76 | 3.32 | 6.24 | 17.39 | 46 |
| Manganui at Everett Park | 13.71 | 56.22 | 4.71 | 3.82 | 5.58 | 7.78 | 131.96 | 33 |
| Mangawheroiti Above Intake W.W | 0.21 | 0.58 | 0.16 | 0.17 | 0.17 | 0.23 | 0.56 | 12 |
| Ngatoro at SH3 | 1.09 | 3.82 | 0.38 | 0.31 | 0.43 | 0.53 | 20.41 | 36 |
| Oakura at Victoria Rd | 7.64 | 18.72 | 0.80 | 0.74 | 1.39 | 1.75 | 67.83 | 6 |
| Patea at McColls Bridge | 23.68 | 67.38 | 4.48 | 2.14 | 4.99 | 11.70 | 53.87 | 37 |
| Patea at Skinner Rd | 2.91 | 11.06 | 1.04 | 0.84 | 1.36 | 2.47 | 7.41 | 46 |
| Tangahoe below Railway Bridge | 1.98 | 21.86 | 1.08 | 1.41 | 1.37 | 2.99 | 2.58 | 7 |
| Timaru at Tataraimaka | 2.74 | 7.22 | 0.43 | 0.43 | 0.69 | 0.87 | 28.05 | 11 |
| Waikaramarama at Bridge | 0.28 | 1.08 | 0.03 | 0.02 | 0.04 | 0.04 | 2.74 | 7 |
| Waingongoro at Eltham Rd | 1.53 | 5.33 | 0.80 | 0.52 | 0.95 | 1.30 | 4.71 | 49 |
| Waingongoro at SH45 | 2.88 | 13.17 | 1.72 | 1.82 | 2.14 | 3.72 | 5.55 | 44 |
| Waiongana at SH3a | 2.04 | 8.24 | 0.61 | 0.48 | 0.80 | 1.25 | 39.43 | 43 |
| Waitara at Bertrand Rd | 79.17 | 199.22 | 10.56 | 9.56 | 15.50 | 26.02 | 137.76 | 43 |
| Waitara at Purangi Bridge | 30.46 | 103.54 | 1.85 | 0.73 | 3.43 | 6.78 | 103.35 | 25 |
| Waitotara at Rimunui Station | 9.21 | 35.81 | 3.84 | 4.04 | 4.93 | 7.39 | 15.35 | 19 |
| Waiwhakaiho at Egmont Village | 6.99 | 25.61 | 2.37 | 2.16 | 2.82 | 3.70 | 141.82 | 44 |
| Warea at Coast | 1.70 | 6.42 | 0.51 | 0.50 | 0.72 | 0.75 | 12.53 | 8 |

2.2 Long-term data patterns

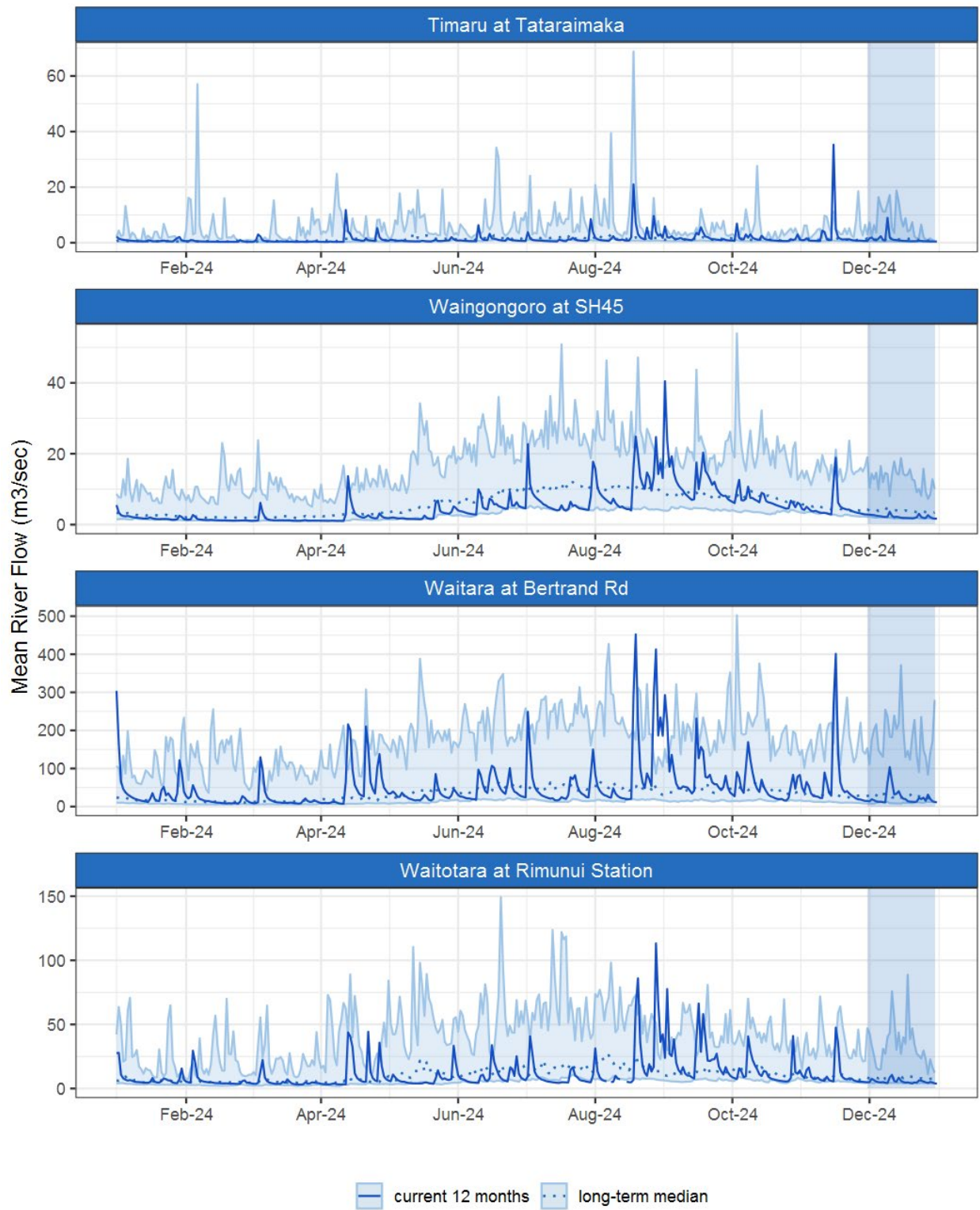


Figure 2.1: Running average river flows for selected sites, set in context of the historic record.

2.3 Monthly Bar Charts

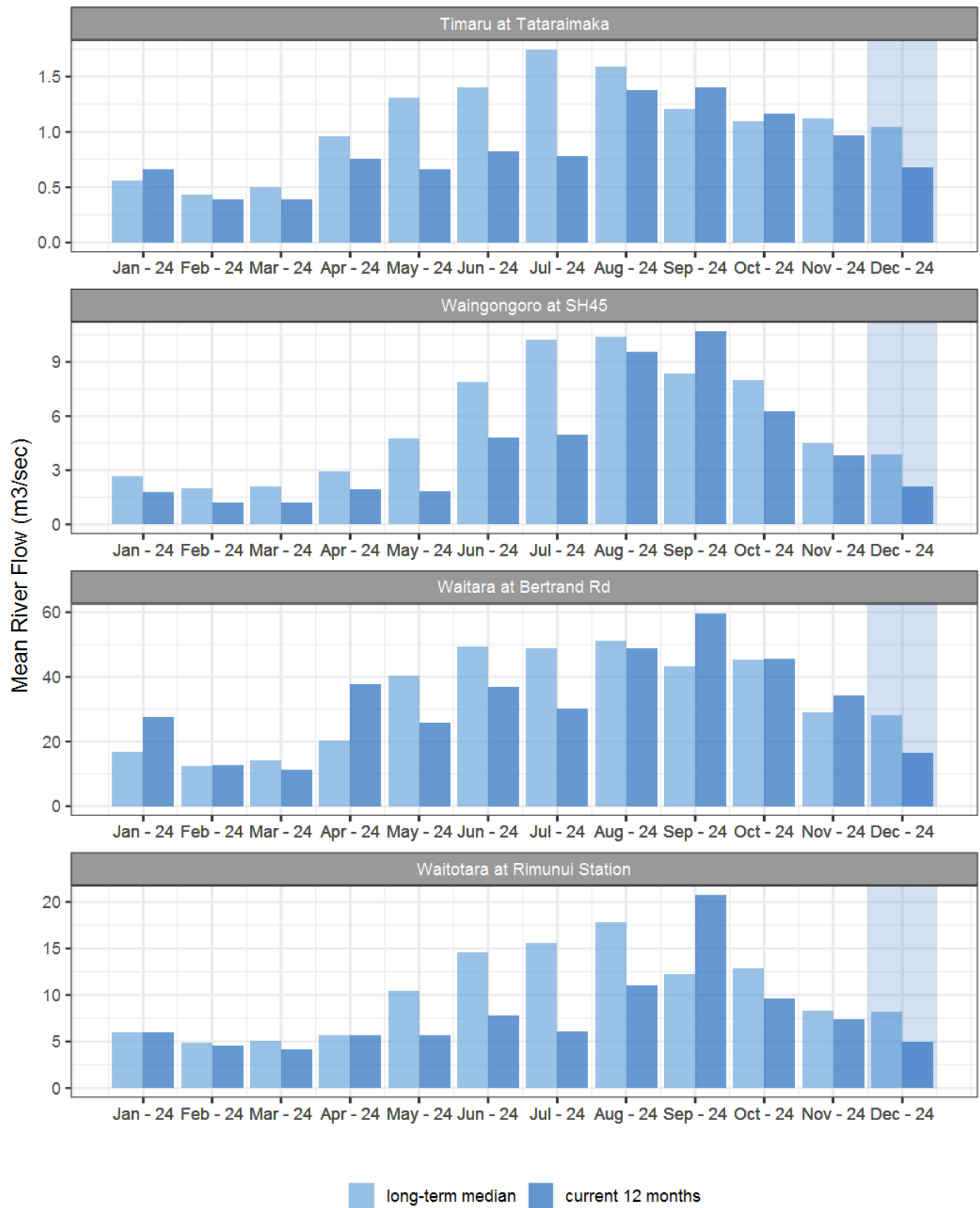


Figure 2.2: Monthly mean river flow for this month and the mean of all previously recorded months.

3. River Temperature

Map 3: December mean water temperature with difference to long-term mean (°C).

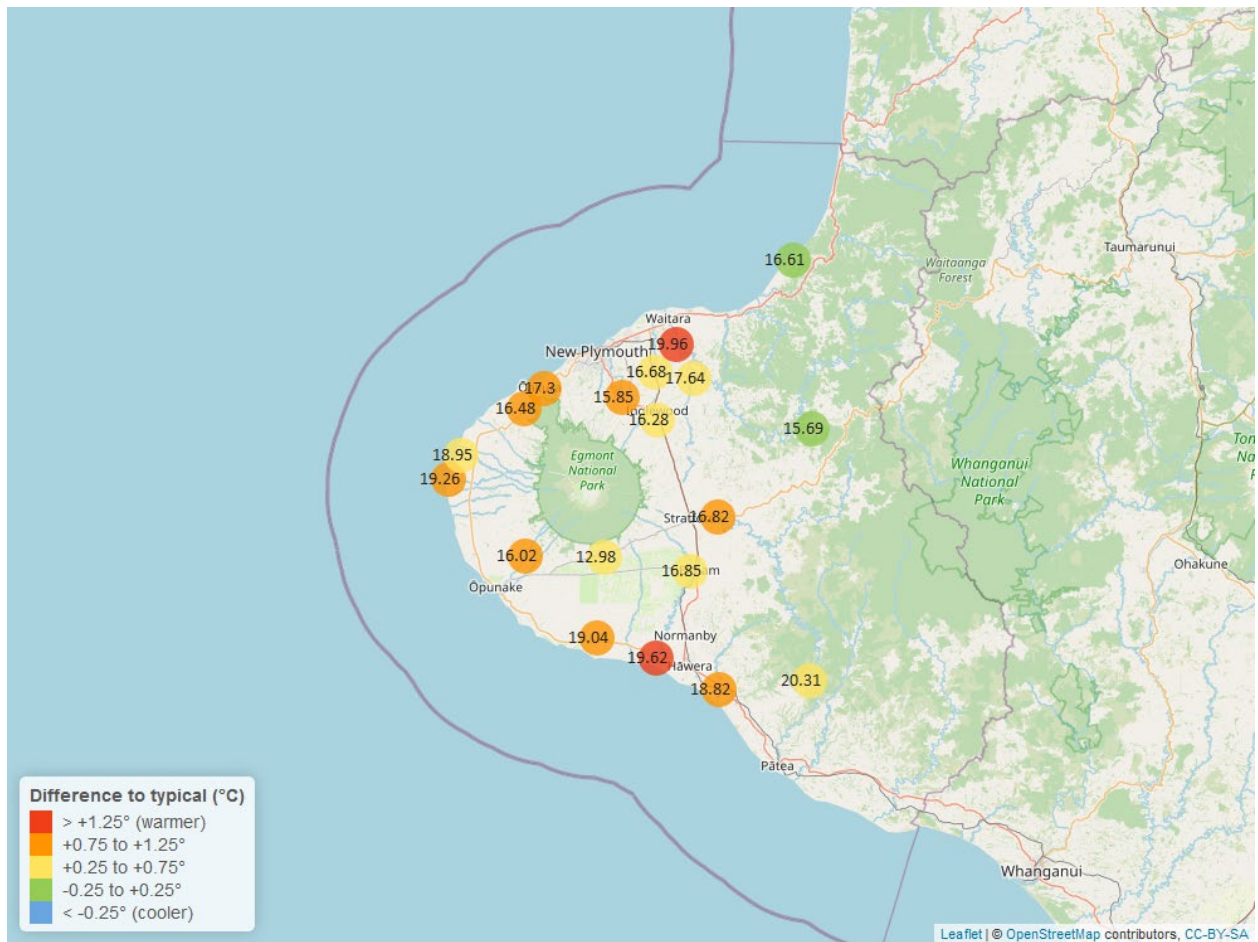


Table 3: Summary of high, low and mean river temperature for December and for December in all preceding years of record.

| December 2024 - River Temperature (°C) | | | | | | | | |
|--|---------------|----------|---------------|----------|---------------|----------|------------------|------------|
| River and Site | Highs | | Lows | | Mean | | December maximum | Data years |
| | current month | historic | current month | historic | current month | historic | | |
| Kapoaiaia at Lighthouse | 22.93 | 22.43 | 15.77 | 14.65 | 19.26 | 18.10 | 24.72 | 25 |
| Kaupokonui at Glenn Rd | 24.26 | 22.51 | 15.66 | 14.16 | 19.04 | 17.96 | 25.40 | 35 |
| Manganui at Everett Park | 19.60 | 20.85 | 14.97 | 14.48 | 17.64 | 17.31 | 20.41 | 16 |
| Mangawheroiti Above Intake W.W | 14.93 | 14.83 | 11.20 | 10.15 | 12.98 | 12.33 | 16.13 | 12 |
| Matau at Woolshed | 18.73 | 20.09 | 13.70 | 13.01 | 15.69 | 15.69 | 20.28 | 7 |
| Ngatoro at SH3 | 18.54 | 19.15 | 14.00 | 12.65 | 16.28 | 15.90 | 19.46 | 26 |
| Oakura at Victoria Rd | 20.65 | 20.16 | 14.41 | 13.49 | 17.30 | 16.52 | 22.48 | 6 |
| Patea at McColls Bridge | 22.15 | 23.55 | 18.38 | 16.19 | 20.31 | 19.64 | 23.54 | 9 |
| Patea at Skinner Rd | 19.79 | 19.60 | 14.59 | 13.10 | 16.82 | 16.01 | 21.32 | 20 |
| Tangahoe below Railway Bridge | 21.72 | 21.31 | 16.27 | 15.18 | 18.82 | 17.80 | 22.81 | 7 |
| Timaru at Tataraimaka | 19.60 | 19.70 | 14.39 | 13.11 | 16.48 | 15.73 | 21.19 | 11 |
| Waiaua 2 at Barraclough Opua | 21.80 | 20.77 | 13.08 | 11.75 | 16.02 | 15.22 | 23.55 | 6 |
| Waikaramarama at Bridge | 17.66 | 18.57 | 15.04 | 14.19 | 16.61 | 16.56 | 17.98 | 7 |
| Waingongoro at Eltham Rd | 19.86 | 20.00 | 14.52 | 13.16 | 16.85 | 16.16 | 20.96 | 20 |
| Waingongoro at SH45 | 22.34 | 21.30 | 17.21 | 14.86 | 19.62 | 17.91 | 23.78 | 19 |
| Waiongana at SH3a | 18.98 | 19.70 | 14.28 | 13.54 | 16.68 | 16.30 | 20.27 | 13 |
| Waitara at Bertrand Rd | 21.77 | 22.14 | 17.50 | 15.64 | 19.96 | 18.54 | 22.64 | 33 |
| Waiwhakaiho at Egmont Village | 18.42 | 18.31 | 13.51 | 11.95 | 15.85 | 15.00 | 19.49 | 33 |
| Warea at Coast | 23.23 | 22.92 | 15.40 | 14.81 | 18.95 | 18.22 | 24.80 | 6 |

3.2 Long-term data patterns

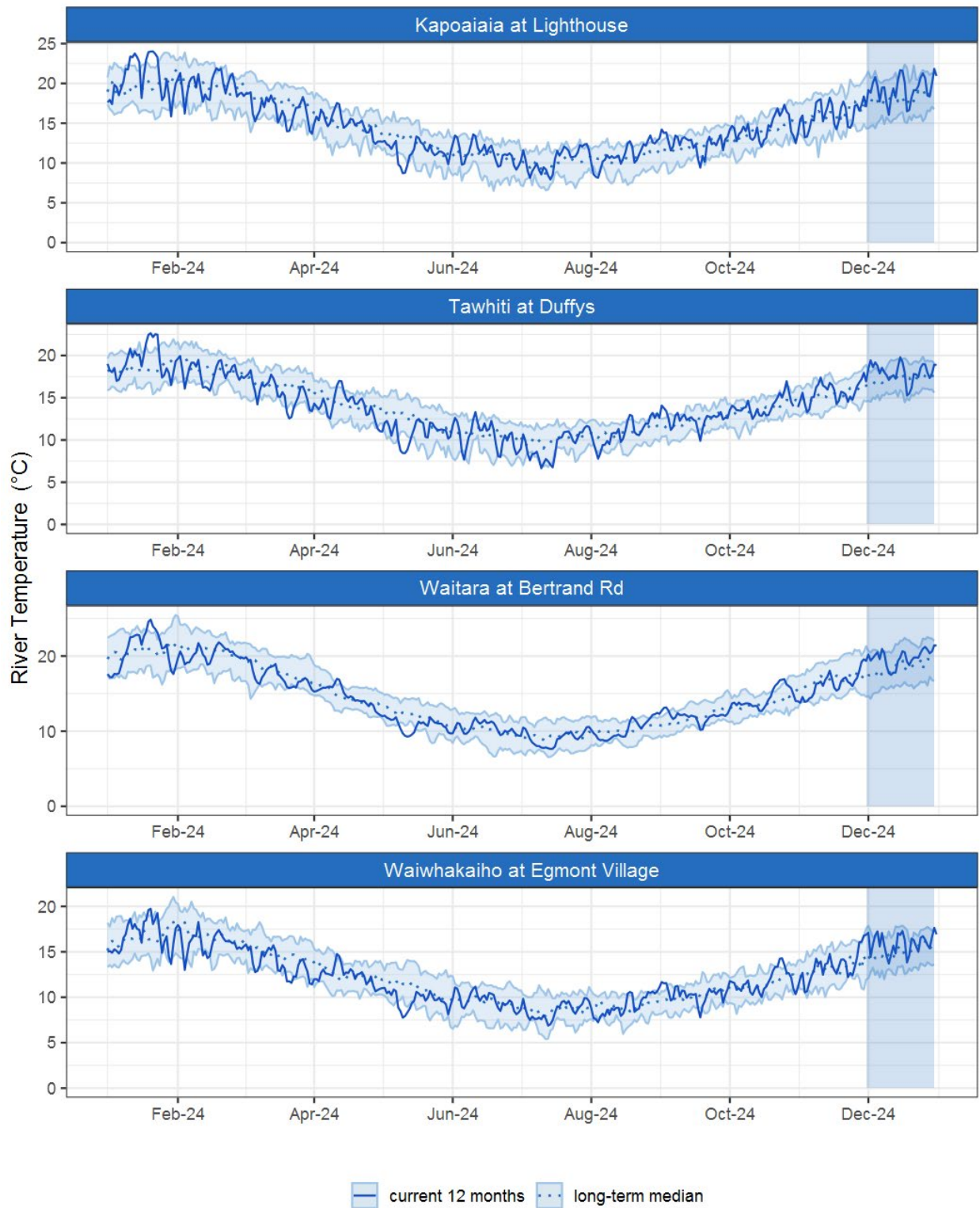


Figure 3.1: Running average river temperature for selected sites, set in context of the historic record.

3.3 Monthly Bar Charts

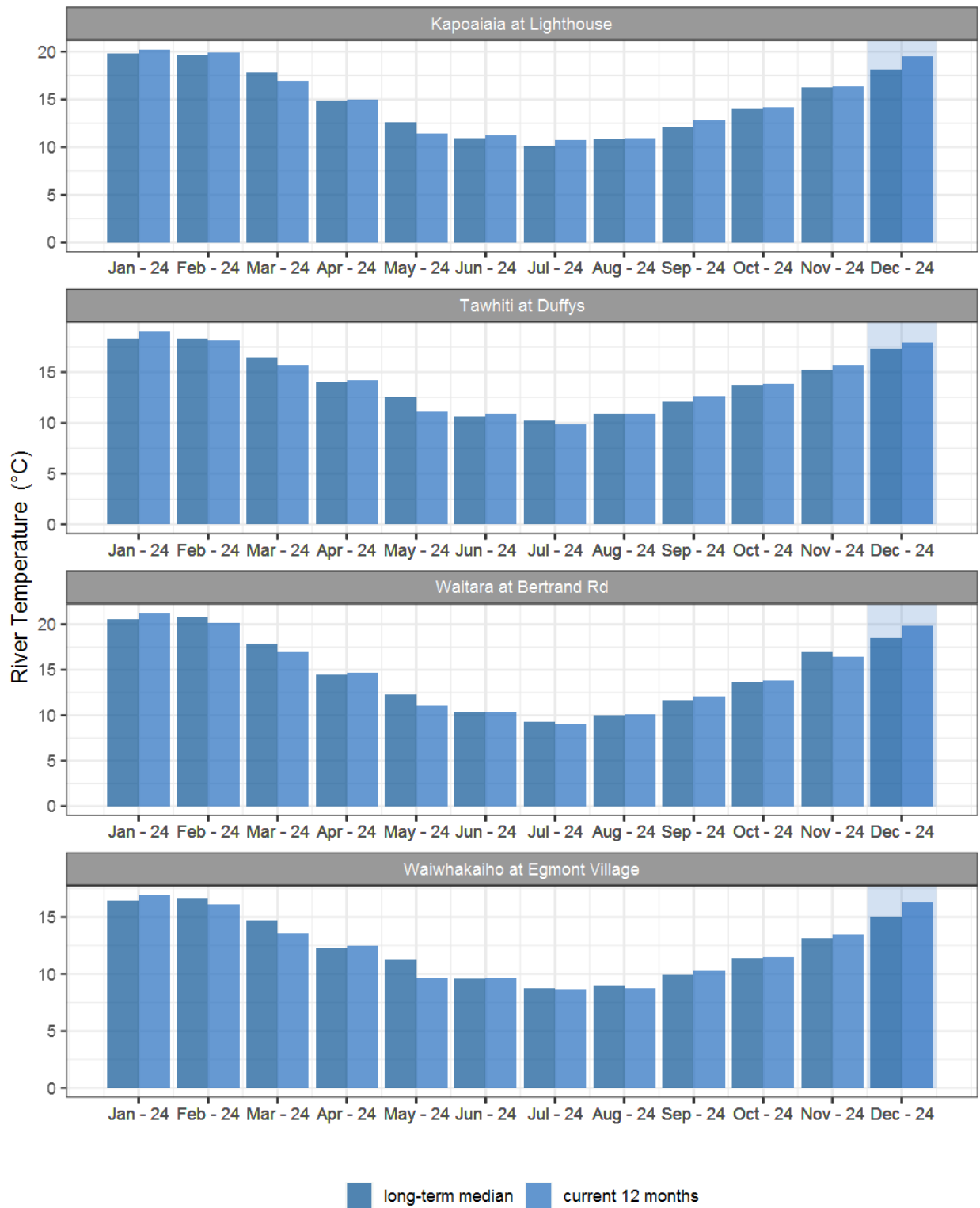


Figure 3.2: Monthly mean river temperature for this month and the mean of all previously recorded months.

4. Air Temperature

Map 4: December mean air temperature with difference to long-term mean (°C).

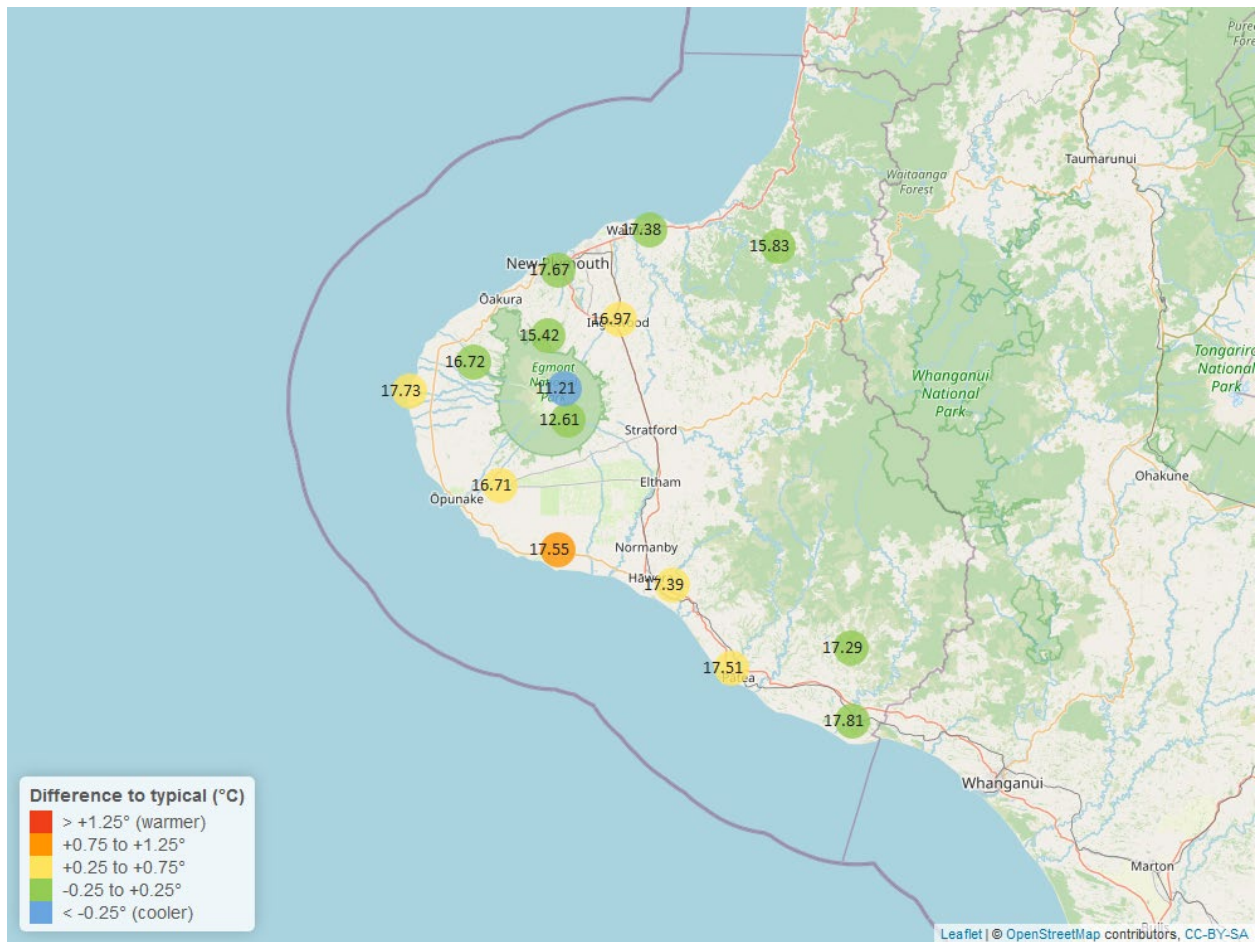


Table 4: Summary of high, low and mean air temperature for December and for December in all preceding years of record.

| December 2024 - Air Temperature (°C) | | | | | | | | |
|--------------------------------------|---------------|----------|---------------|----------|---------------|----------|------------------|------------|
| Site | Highs | | Lows | | Mean | | December maximum | Data years |
| | current month | historic | current month | historic | current month | historic | | |
| Brooklands Zoo at New Plymouth | 23.00 | 23.93 | 12.69 | 11.88 | 17.67 | 17.73 | 27.60 | 12 |
| Dawson Falls | 18.42 | 18.60 | 7.70 | 6.29 | 12.61 | 12.52 | 21.50 | 9 |
| Inglewood at Oxidation Ponds | 23.28 | 23.26 | 11.24 | 9.93 | 16.97 | 16.45 | 26.60 | 13 |
| Kapoaiaia at Lighthouse | 20.15 | 20.89 | 13.77 | 12.73 | 17.73 | 17.26 | 20.86 | 12 |
| Kaupokonui at Glenn Rd | 22.26 | 21.73 | 13.20 | 11.59 | 17.55 | 16.74 | 23.66 | 9 |
| Mangorei Upper at Forest Hill | 19.45 | 20.63 | 11.29 | 10.57 | 15.42 | 15.59 | 22.61 | 7 |
| Motunui M39 at Weston W3 | 20.52 | 21.70 | 12.77 | 11.88 | 17.38 | 17.36 | 22.30 | 8 |
| North Egmont at Visitors Centre | 17.06 | 18.10 | 6.29 | 6.48 | 11.21 | 12.35 | 20.62 | 10 |
| Patea at Bore 3 | 21.42 | 21.50 | 13.57 | 11.79 | 17.51 | 16.94 | 22.93 | 13 |
| Stony at Mangatete Bridge | 20.23 | 21.55 | 12.64 | 11.80 | 16.72 | 16.63 | 21.92 | 8 |
| Taungatara at Eltham Rd | 20.81 | 20.89 | 12.30 | 11.56 | 16.71 | 16.18 | 21.96 | 9 |
| Tawhiti at Duffys | 21.28 | 21.65 | 10.94 | 9.93 | 17.39 | 16.88 | 23.74 | 11 |
| Uruti at Kaka Rd | 20.20 | 21.12 | 11.77 | 10.58 | 15.83 | 15.92 | 22.21 | 6 |
| Waitotara at Hawken Rd | 22.29 | 22.73 | 13.58 | 12.12 | 17.81 | 17.59 | 24.54 | 8 |
| Weraweraonga at Mangawhio Rd | 23.23 | 23.74 | 11.77 | 11.00 | 17.29 | 17.47 | 25.79 | 7 |

4.2 Long-term data patterns



Figure 4.1: Running average air temperature for selected sites, set in context of the historic record.

4.3 Monthly Bar Charts

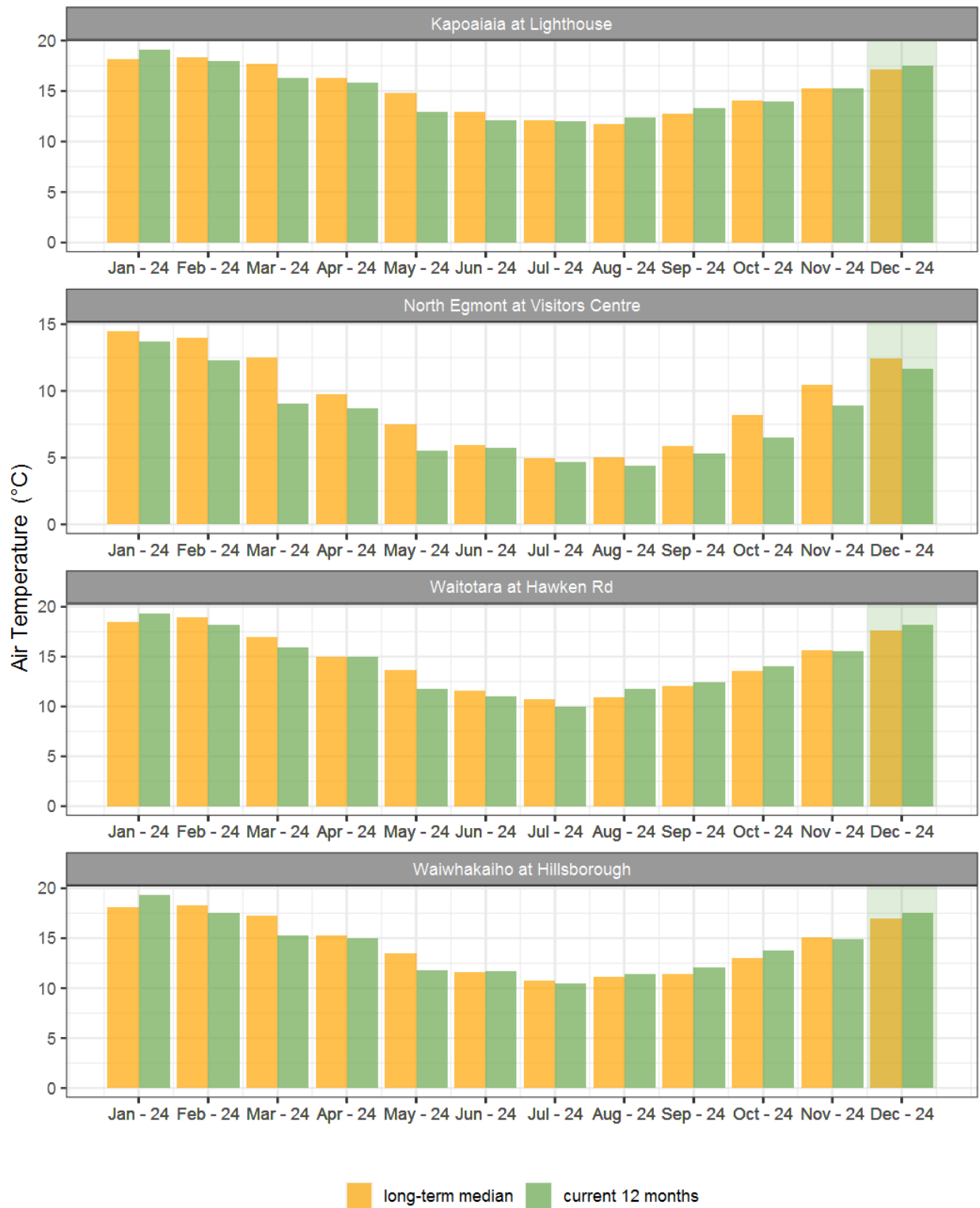


Figure 4.2: Monthly mean air temperature for December and the mean of all previously recorded months.

5. Soil Moisture

Map 5: December mean soil moisture content (%).

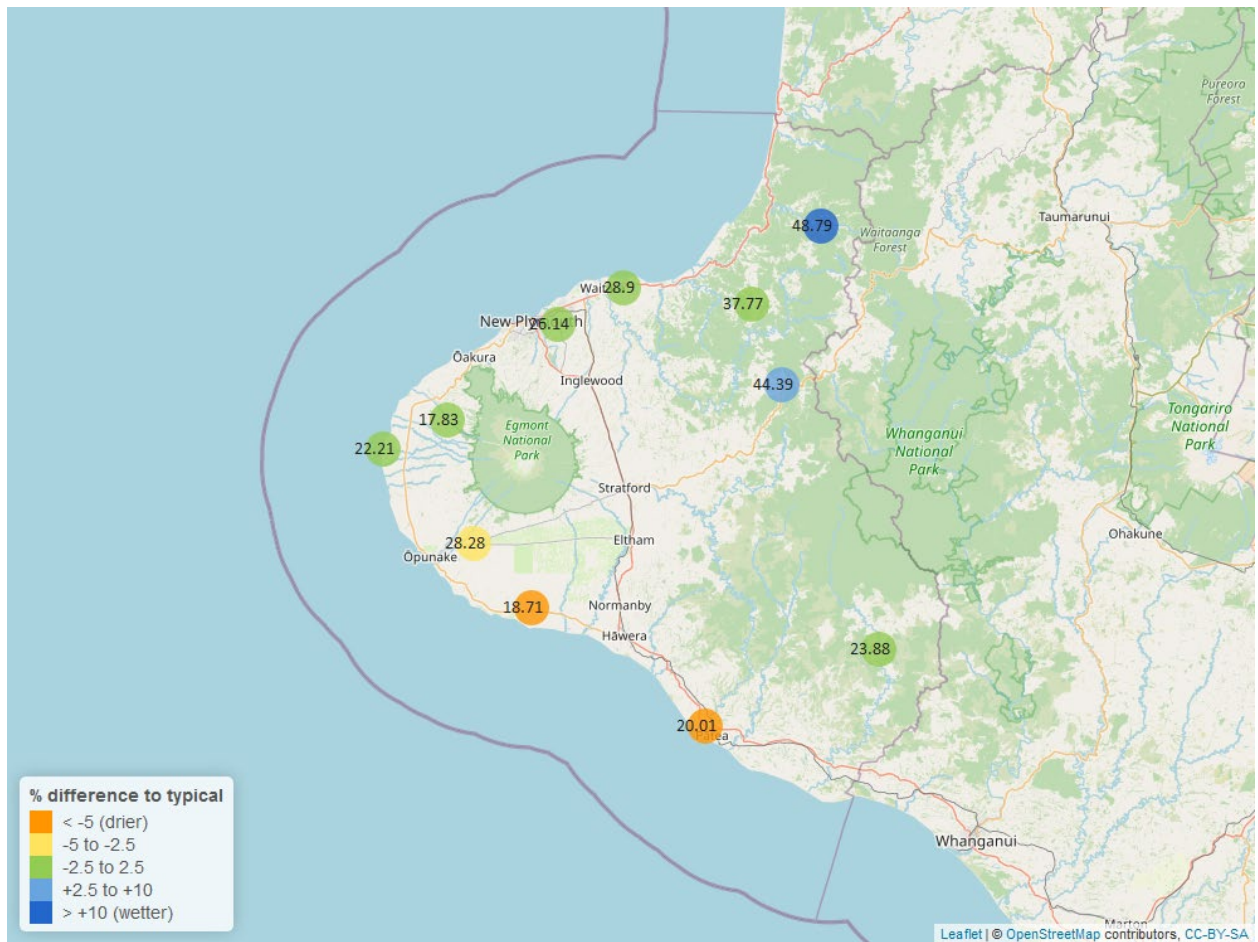


Table 5: Summary of high, low and mean soil moisture for December and for December in all preceding years of record.

| December 2024 - Soil Moisture (%) | | | | | | | | |
|-----------------------------------|---------------|----------|---------------|----------|---------------|----------|------------------|------------|
| Site | Highs | | Lows | | Mean | | December maximum | Data years |
| | current month | historic | current month | historic | current month | historic | | |
| Kapoaiaia at Lighthouse | 25.13 | 28.50 | 17.69 | 10.16 | 22.21 | 22.37 | 25.32 | 12 |
| Kaupokonui at Glenn Rd | 25.02 | 35.11 | 14.69 | 9.04 | 18.71 | 29.85 | 25.91 | 13 |
| Kotare at OSullivans | 53.85 | 48.13 | 42.26 | 23.45 | 48.79 | 38.30 | 58.98 | 12 |
| Motunui M39 at Weston W3 | 31.58 | 31.70 | 27.14 | 15.63 | 28.90 | 27.99 | 32.03 | 11 |
| Patea at Bore 3 | 24.26 | 30.95 | 17.25 | 21.39 | 20.01 | 27.28 | 25.28 | 8 |
| Pohokura Saddle | 49.06 | 50.51 | 40.61 | 32.17 | 44.39 | 41.14 | 50.47 | 10 |
| Stony at Mangatete Bridge | 22.17 | 24.35 | 15.42 | 9.87 | 17.83 | 16.54 | 24.95 | 8 |
| Taungatara at Eltham Rd | 32.90 | 41.99 | 18.76 | 15.99 | 28.28 | 32.61 | 36.60 | 11 |
| Uruti at Kaka Rd | 40.07 | 44.72 | 35.41 | 23.41 | 37.77 | 39.04 | 40.57 | 13 |
| Waitotara at Rimunui Station | 24.77 | 29.00 | 23.55 | 19.36 | 23.88 | 25.64 | 25.26 | 7 |
| Waiwhakaiho at Hillsborough | 29.38 | 31.37 | 22.91 | 15.29 | 26.14 | 27.17 | 30.72 | 12 |

5.2 Long-term data patterns

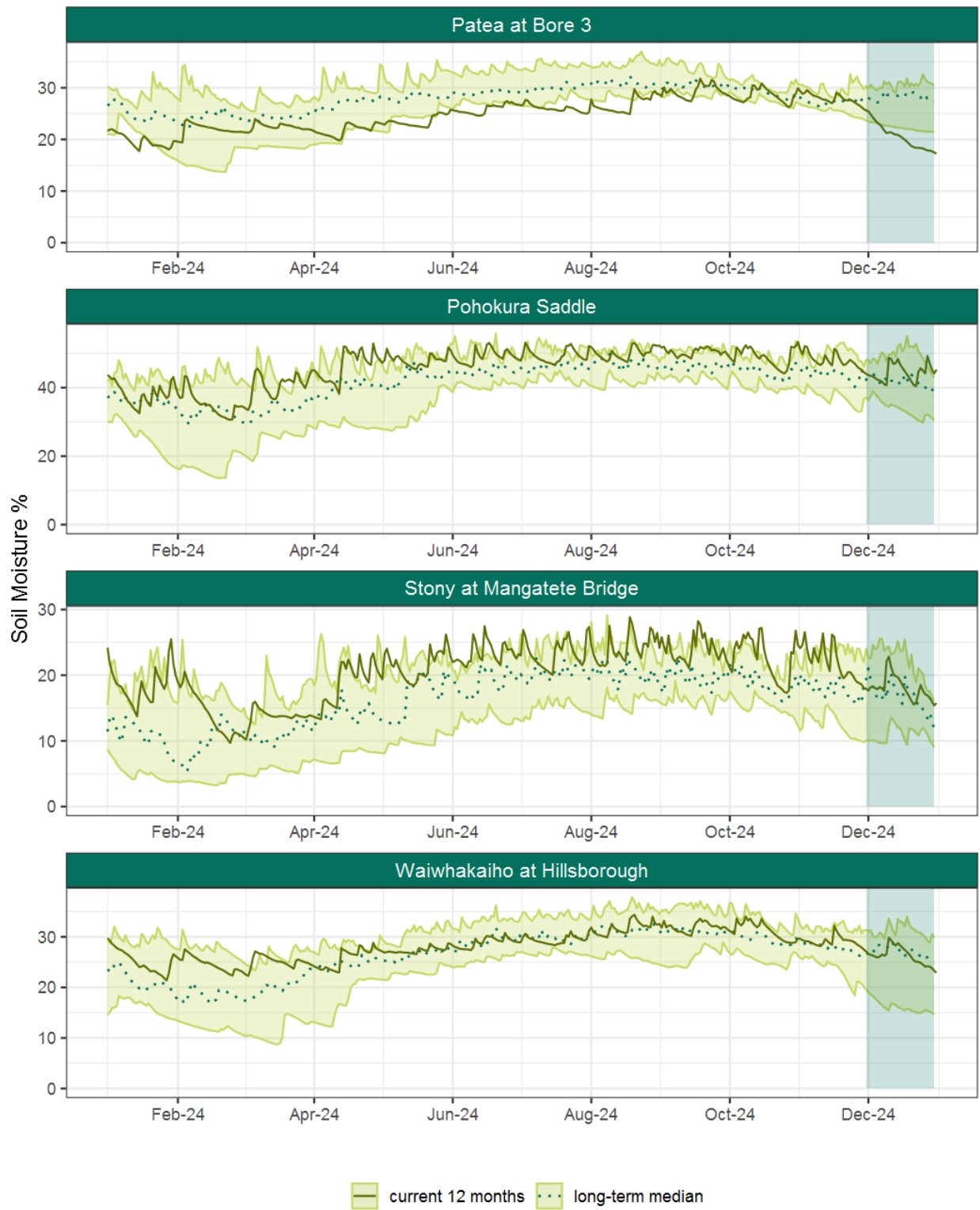


Figure 5.1: Running average soil moisture for selected sites, set in context of the historic record.

5.3 Monthly Bar Charts

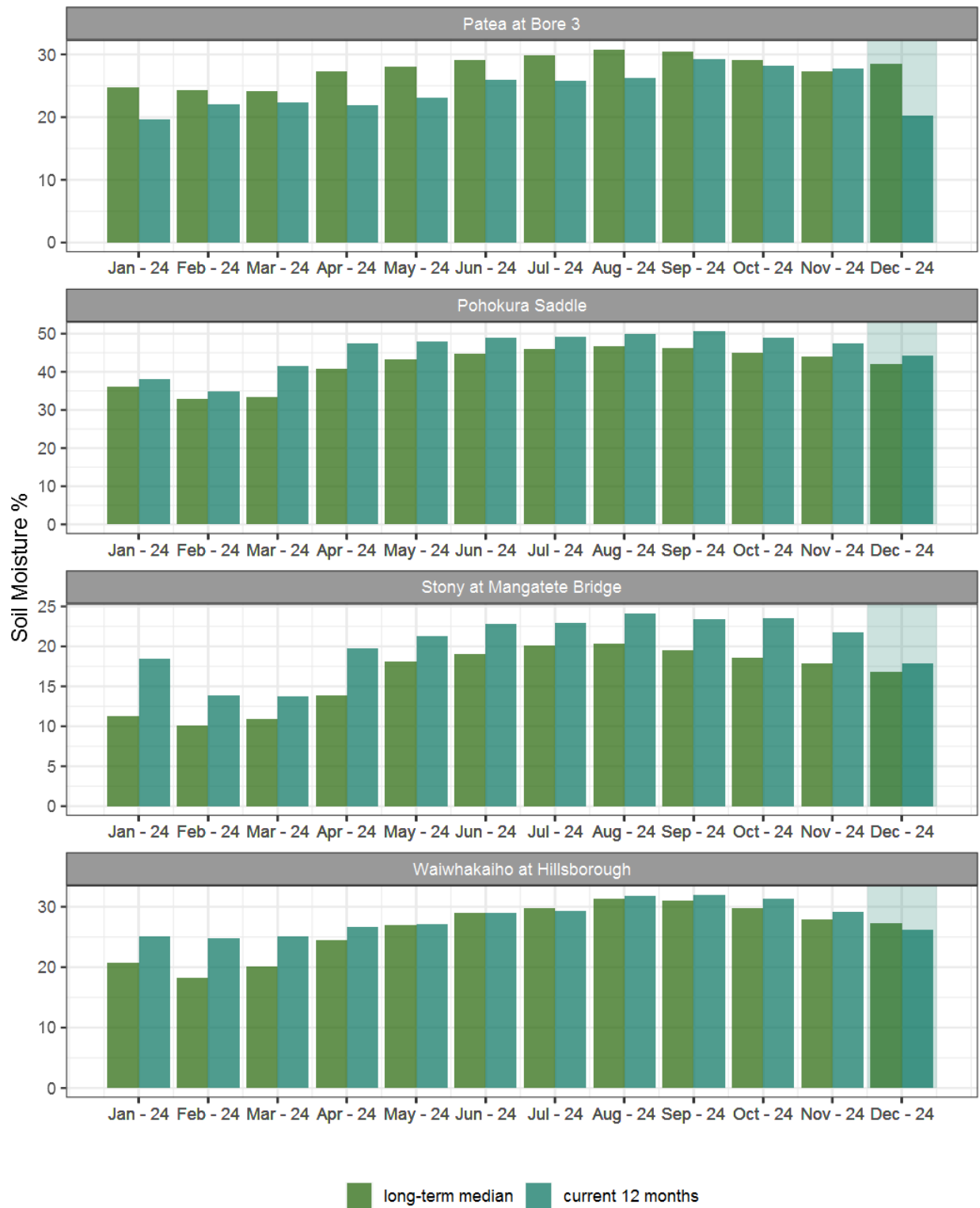


Figure 5.2: Monthly mean soil moisture for this month and the mean of all previously recorded months.

6. Soil Temperature

Map 6: December mean soil temperatures with difference to long-term mean (°C).

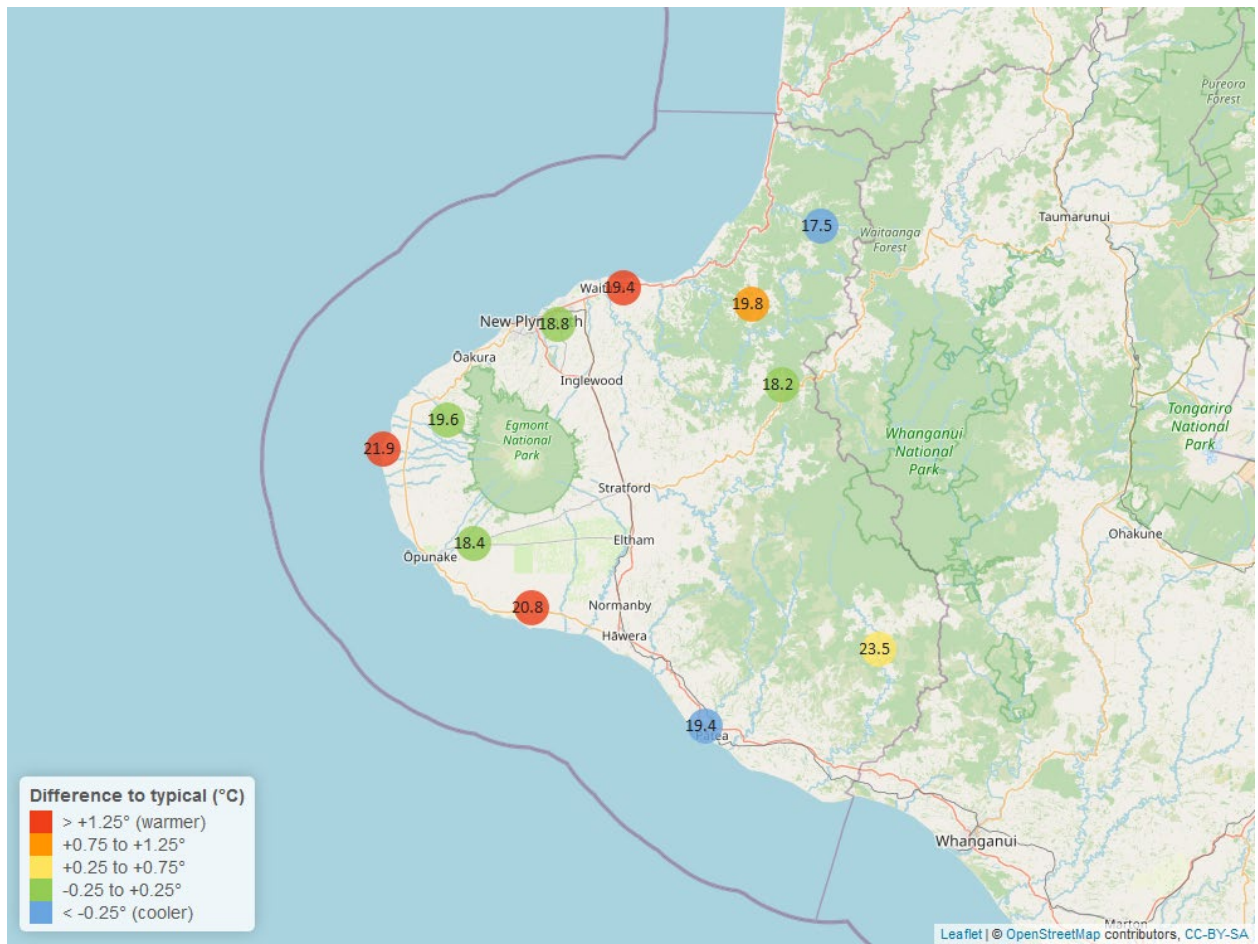


Table 6: Summary of high, low and mean soil temperature for December and for December in all preceding years of record.

| December 2024 - Soil Temperatures (°C) | | | | | | | | |
|--|---------------|----------|---------------|----------|---------------|----------|------------------|------------|
| Site | Highs | | Lows | | Mean | | December maximum | Data years |
| | current month | historic | current month | historic | current month | historic | | |
| Kapoaiaia at Lighthouse | 27.23 | 23.56 | 19.11 | 17.00 | 21.9 | 19.69 | 30.55 | 12 |
| Kaupokonui at Glenn Rd | 22.95 | 22.97 | 19.56 | 16.30 | 20.8 | 19.30 | 23.80 | 13 |
| Kotare at OSullivans | 18.19 | 21.70 | 16.81 | 15.01 | 17.5 | 18.16 | 18.49 | 12 |
| Motunui M39 at Weston W3 | 20.51 | 20.70 | 18.26 | 15.74 | 19.4 | 18.07 | 21.21 | 11 |
| Patea at Bore 3 | 21.37 | 24.72 | 18.10 | 17.03 | 19.4 | 20.49 | 22.03 | 8 |
| Pohokura Saddle | 19.46 | 20.30 | 16.98 | 15.64 | 18.2 | 18.04 | 20.06 | 10 |
| Stony at Mangatete Bridge | 21.50 | 23.08 | 18.07 | 16.91 | 19.6 | 19.80 | 22.50 | 7 |
| Taungatara at Eltham Rd | 20.16 | 21.47 | 16.96 | 15.84 | 18.4 | 18.28 | 20.90 | 11 |
| Uruti at Kaka Rd | 20.62 | 21.56 | 18.51 | 16.70 | 19.8 | 18.89 | 20.88 | 13 |
| Waitotara at Rimunui Station | 26.20 | 26.27 | 21.32 | 20.25 | 23.5 | 23.04 | 27.23 | 7 |
| Waiwhakaiho at Hillsborough | 19.86 | 21.83 | 17.60 | 16.30 | 18.8 | 18.65 | 20.53 | 12 |

6.2 Long-term data patterns

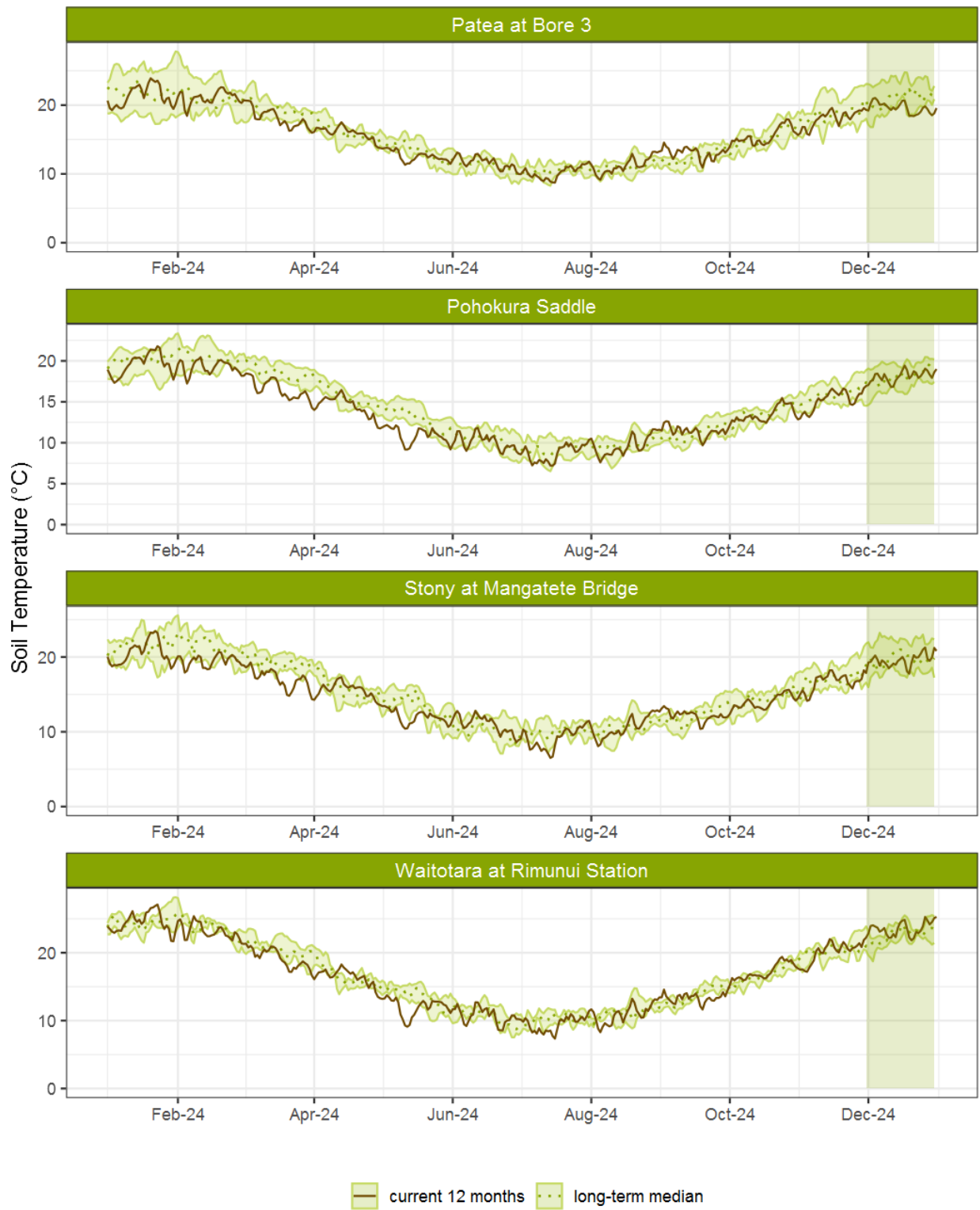


Figure 6.1: Running average soil temperature for selected sites, set in context of the historic record.

6.3 Monthly Bar Charts

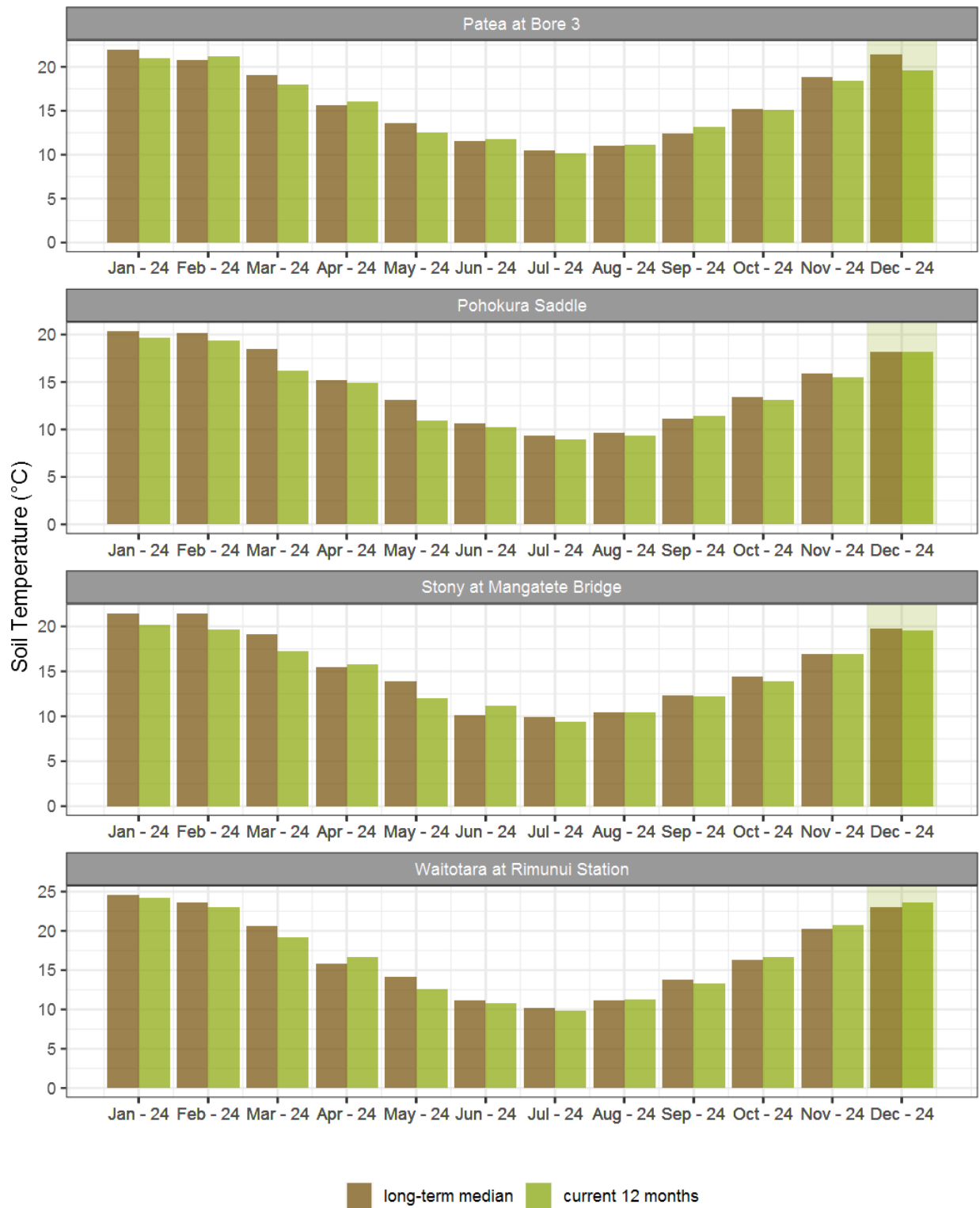


Figure 6.2: Monthly mean soil temperature for this month and the mean of all previously recorded months.

7. Wind Speed and Maximum Gusts

Map 7: December mean of wind speed with difference to long-term values (km/hr).

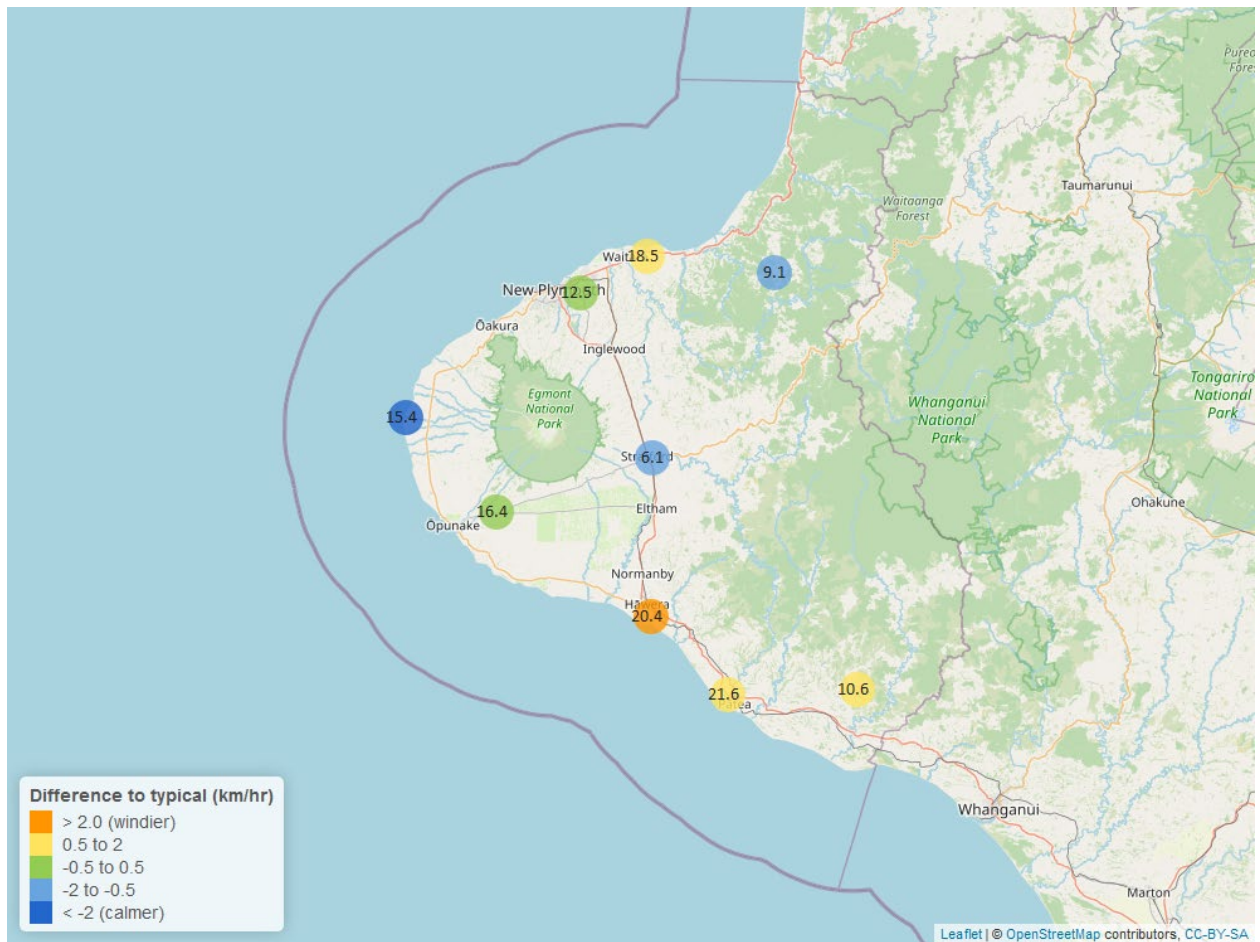


Table 7: Summary of high, low and mean wind speed for December and for December in all preceding years of record.

| December 2024 - Wind Speed (average) - (km/hr) | | | | | | | | |
|--|---------------|----------|---------------|----------|---------------|----------|------------------|------------|
| Site | Highs | | Lows | | Mean | | December maximum | Data years |
| | current month | historic | current month | historic | current month | historic | | |
| Hawera AWS | 41.67 | 35.19 | 7.41 | 5.56 | 20.4 | 17.59 | 50.93 | 19 |
| Kapoaiaia at Lighthouse | 40.91 | 36.73 | 6.32 | 6.29 | 15.4 | 18.64 | 56.09 | 24 |
| New Plymouth AWS | 45.37 | 37.04 | 5.56 | 5.56 | 18.5 | 17.59 | 57.41 | 17 |
| Patea at Bore 3 | 41.20 | 38.39 | 6.41 | 6.09 | 21.6 | 19.78 | 49.37 | 9 |
| Patea at Stratford | 15.77 | 17.98 | 2.08 | 2.03 | 6.1 | 7.05 | 24.14 | 18 |
| Taungatara at Eltham Rd | 36.89 | 31.96 | 6.37 | 6.32 | 16.4 | 16.08 | 42.21 | 9 |
| Uruti at Kaka Rd | 25.48 | 22.41 | 3.61 | 3.60 | 9.1 | 9.73 | 49.47 | 27 |
| Waitotara at Ngutuwera | 23.49 | 21.43 | 2.80 | 1.82 | 10.6 | 9.81 | 30.41 | 25 |
| Waiwhakaiho at Hillsborough | 37.71 | 28.42 | 3.64 | 3.96 | 12.5 | 12.04 | 49.95 | 7 |

Table 8: Summary of high, low and maximum wind gusts for December and for December in all preceding years of record.

| December 2024 - Wind Gusts (Maximum) - (km/hr) | | | | | | | | |
|--|---------------|----------|---------------|----------|---------------|----------|------------------|------------|
| Site | Highs | | Lows | | Mean | | December maximum | Data years |
| | current month | historic | current month | historic | current month | historic | | |
| Hawera AWS | 72.23 | 66.67 | 31.48 | 25.93 | 46.3 | 44.45 | 77.78 | 19 |
| Kapoaiaia at Lighthouse | 74.16 | 70.60 | 17.64 | 22.30 | 37.1 | 42.40 | 76.32 | 23 |
| New Plymouth AWS | 90.75 | 64.82 | 22.22 | 24.08 | 40.7 | 42.60 | 94.45 | 17 |
| Patea at Bore 3 | 79.30 | 66.60 | 30.50 | 26.60 | 52.4 | 47.60 | 83.70 | 9 |
| Patea at Stratford | 59.04 | 55.40 | 19.80 | 22.30 | 34.2 | 35.20 | 64.08 | 18 |
| Taungatara at Eltham Rd | 71.90 | 74.10 | 28.10 | 27.20 | 47.1 | 41.80 | 78.00 | 9 |
| Uruti at Kaka Rd | 92.88 | 64.40 | 25.92 | 23.50 | 41.0 | 36.60 | 140.00 | 26 |
| Waitotara at Ngutuwera | 74.16 | 66.96 | 24.12 | 22.20 | 50.0 | 39.40 | 77.04 | 25 |
| Waiwhakaiho at Hillsborough | 84.50 | 67.80 | 21.00 | 23.40 | 41.4 | 39.50 | 92.50 | 7 |

7.2 Long-term data patterns

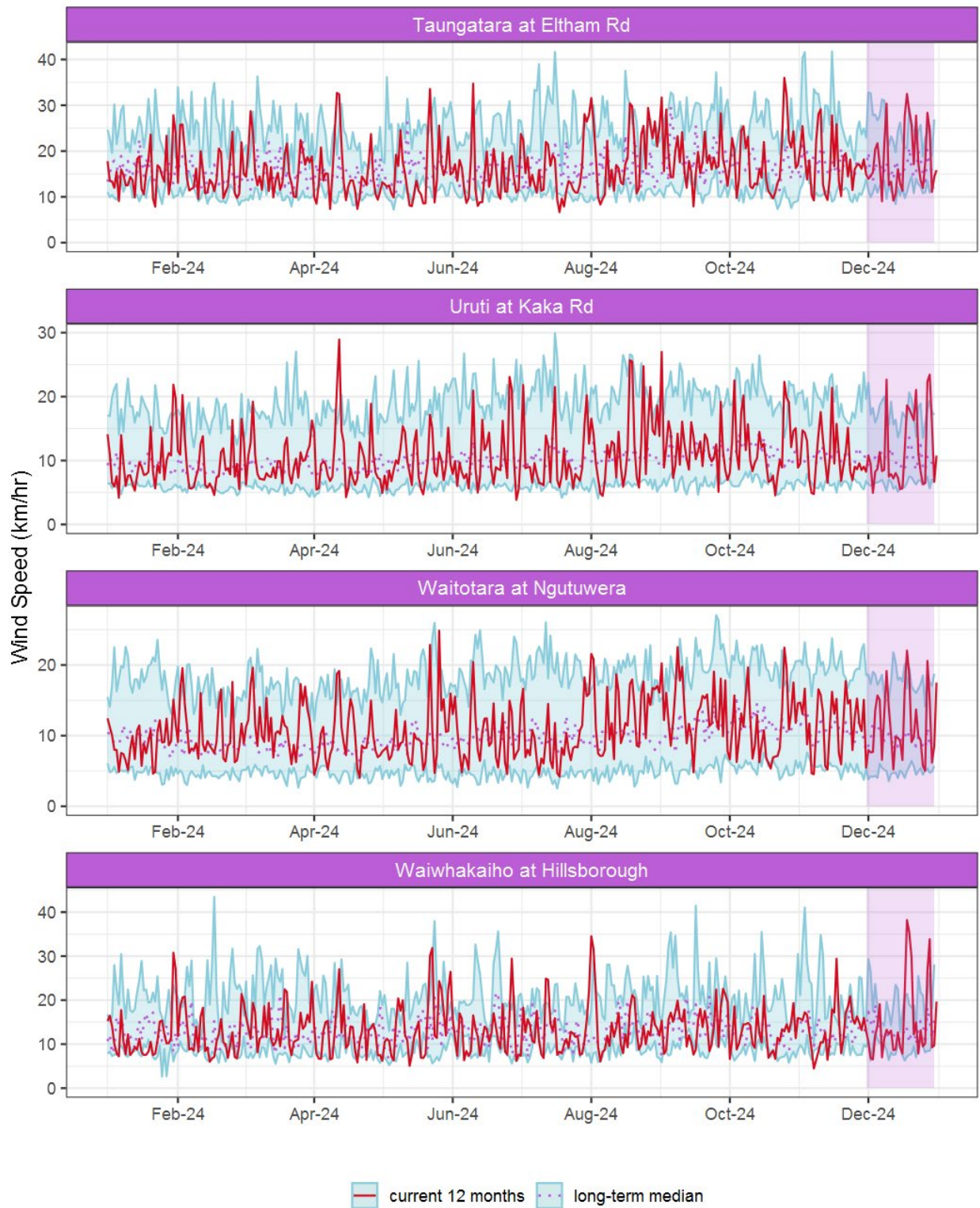


Figure 7.1: Running average wind speed (km/hr) for selected sites, set in context of the historic record.

7.3 Monthly Bar Charts

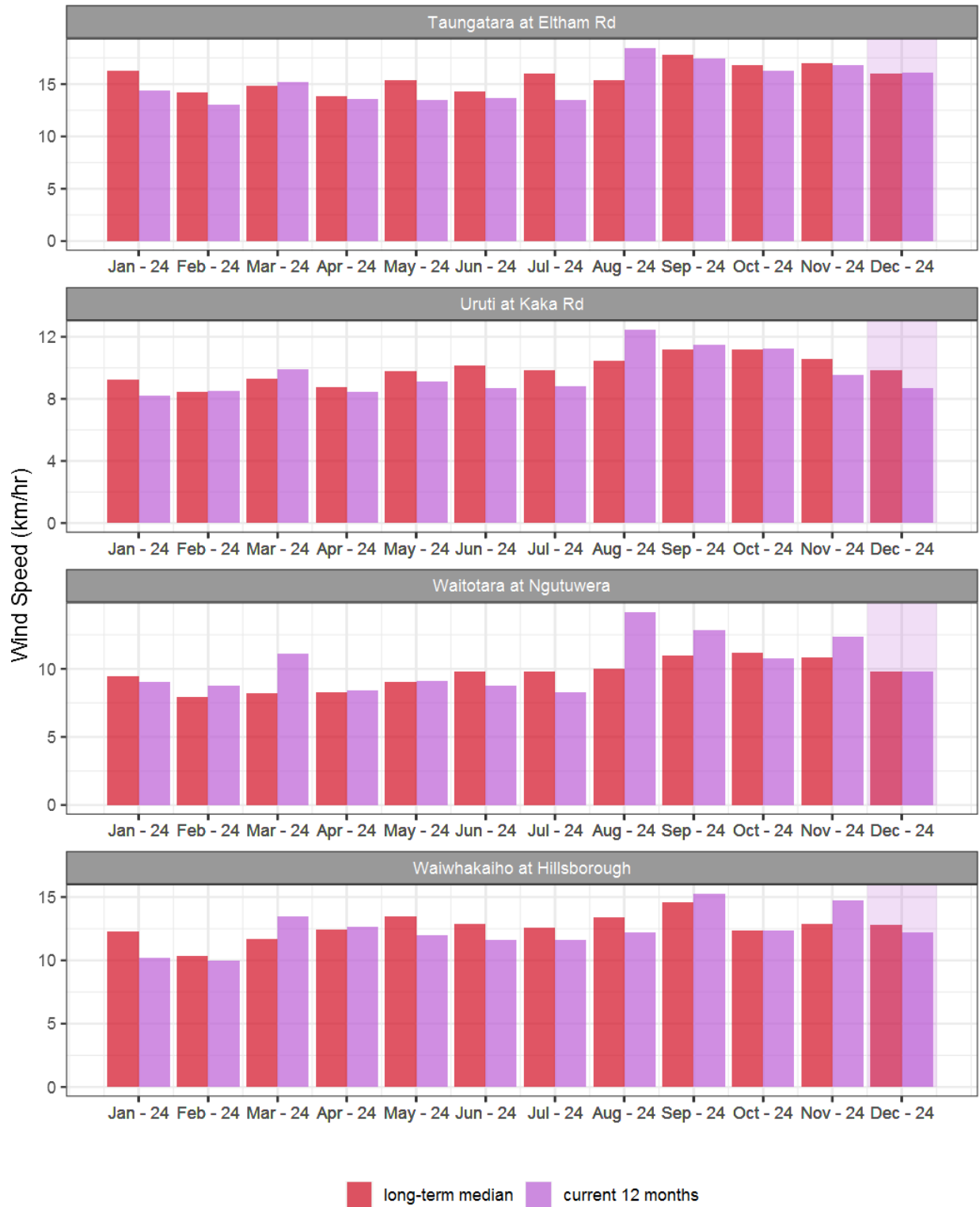


Figure 7.2: Monthly mean wind speed (km/hr) for selected sites, relative to the mean of all previously recorded months.

7.4 Wind roses for December 2024

Average windspeed

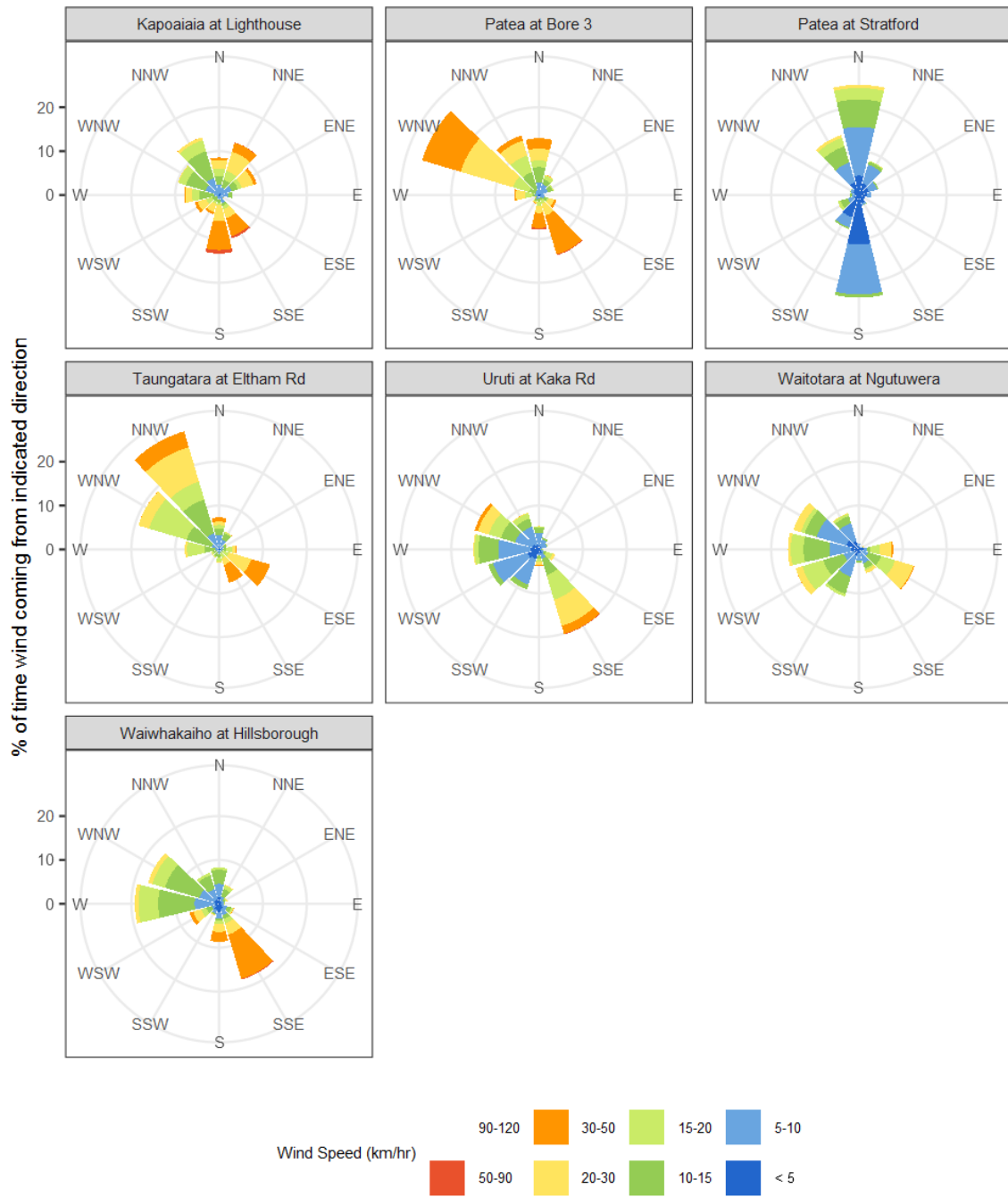


Figure 7.3: Wind roses for December for average wind speed (km/hr).

Maximum gust strength

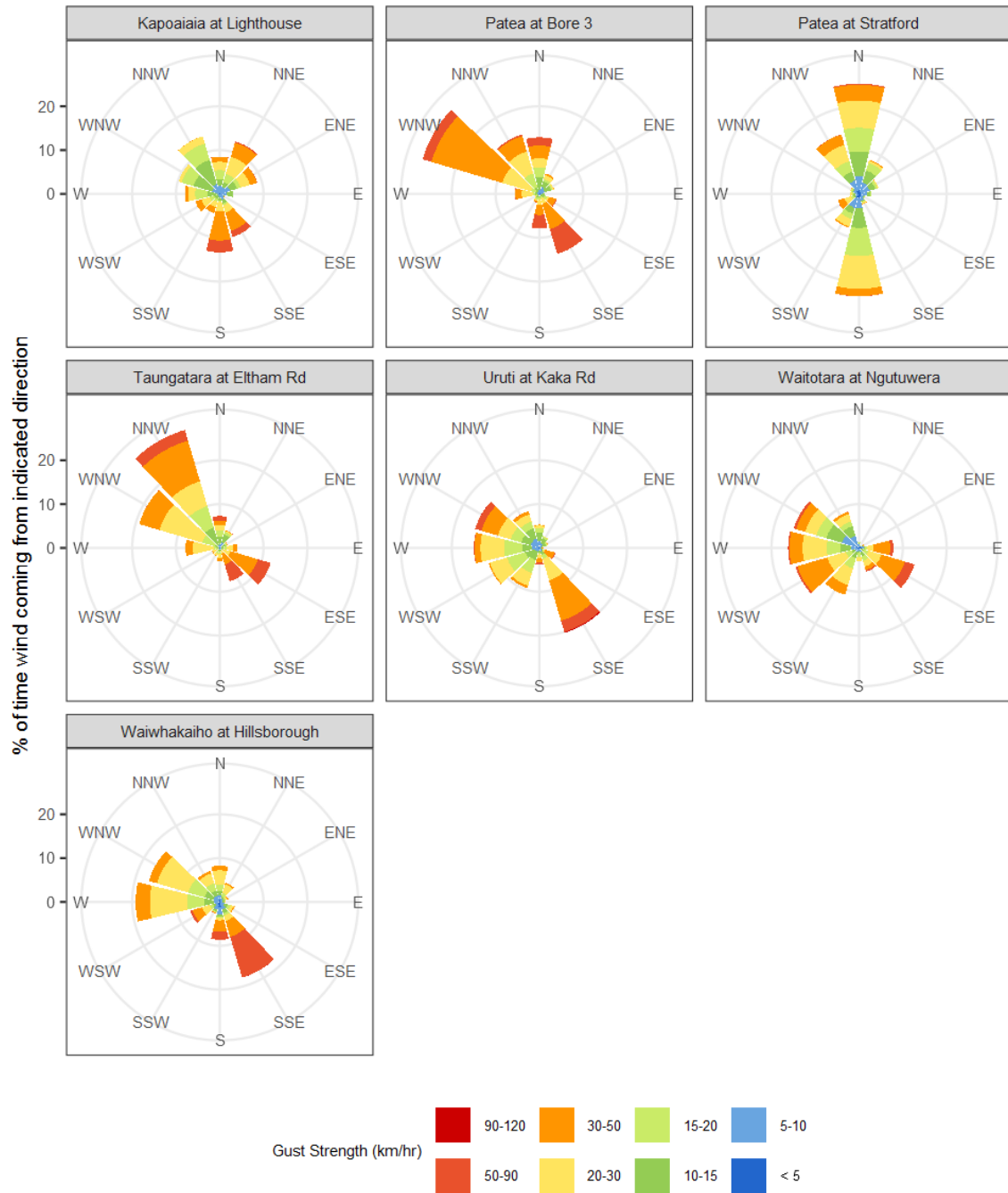


Figure 7.4: Wind roses for December for maximum wind gust (km/hr).

Summary of month's conditions

Rainfall

On average December rainfall was 108.3mm, 34% less than usual, ranging from 63% less than normal rain at Kaupokonui at Glenn Rd, and 11% less than normal at Motunui M39 at Weston W3.

Year-to-date rainfall is lowest at Waitotara at Hawken Rd with 28% less rainfall than normal, Pohokura Saddle has had the highest year-to-date rainfall with only 2% less than normal rainfall, on average there has been 14% less than normal across all rain gauges. Compared to typical full year totals, on average for 2024, sites received 86% of a typical year's rainfall, with the highest value at Pohokura Saddle, 98% of normal, whereas Waitotara at Hawken Rd sits at 72% of the typical year's total.

River Flow

Mean river flows for December were 31.8% lower than typical values, low flows were 21.9% greater, and high flows 72.5% lower than typical values. The maximum river flow recorded in December was 141.8m³/sec at Waiwhakaiho at Egmont Village on 9 December.

River Water Temperature

Mean river (non-mountain) water temperatures were 17.4°C, an average of 0.7°C warmer than long-term December values. Nighttime-low water temperatures were on average 1.2°C warmer than historic lows, and day-time high temperatures were on average 0.1°C cooler than historic highs. The maximum river water temperature recorded in December was 25.4°C at Kaupokonui at Glenn Rd on 29 December.

Air Temperature

The average air temperature for the region (excluding Te Maunga sites) was 16.5°C, which is 0.2°C warmer than long-term December averages. Low air temperatures for December were on average 1°C warmer than the December average for previous years. Day-time high temperatures were on average 0.5°C cooler than historic highs. The maximum air temperature recorded in December was 27.6°C at Brooklands Zoo at New Plymouth on 28 December.

Soil Moisture

The average soil moisture for December across sites in Taranaki region was 28.8%. Soil moistures were on average 1% drier than typical December values. On average, low soil moistures were 7.3% wetter than previous lows, and the highs were on average 3.5% drier than previous values for December.

Soil Temperature

December soil temperatures were generally 0.4°C warmer than long-term averages. Average nighttime low soil temperatures were 1.7°C warmer than recorded lows, and

upper day-time soil temperatures were on average 0.9°C cooler than long-term December highs. The maximum soil temperature recorded in December was 30.6°C at Kapoiaia at Lighthouse on 15 December.

Wind Speed (average and 10 minute gust)

December average wind speeds were 14.5km/hr, with average gust strength of 43.4km/hr, these were 0.3km/hr stronger, and 2.3km/hr gustier than the long-term average. Average calm weather wind speeds were 0.3km/hr stronger than recorded lows, and windy conditions were on average 4.3km/hr stronger than long-term December highs. The maximum wind gust recorded in December was 140.0km/hr at Uruti at Kaka Rd, on 31 December.

Report date: 10 January 2025.

Supply of environmental data - General terms and conditions

The enclosed information is the highest quality data the Taranaki Regional Council (the Council) is currently able to provide. Some or all of the data being provided may not yet have been audited however and is therefore subject to change.

As we endeavor to continuously improve our products, we also reserve the right to further amend data where necessary and without notice at any time. As a result, the information supplied to you now may not be the same as that subsequently produced for you or any other requestor.

While the Council has exercised all reasonable skill and care in controlling the contents of the information, you should independently check the information provided if the accuracy of that information is important to you.

Under no circumstances will the Council, its employees or agents be liable in contract, tort or otherwise to compensate you for any loss, injury or damage (including loss of profits or consequential loss) arising directly or indirectly from the supply by the Council or its agents of inadequate, inaccurate or incorrect environmental data.

Any use of the material supplied, for example, by inclusion in a report or a media release, should be accompanied by an acknowledgment of the source of the data. We also request that any outputs generated through the use of the information provided be provided to the Council.