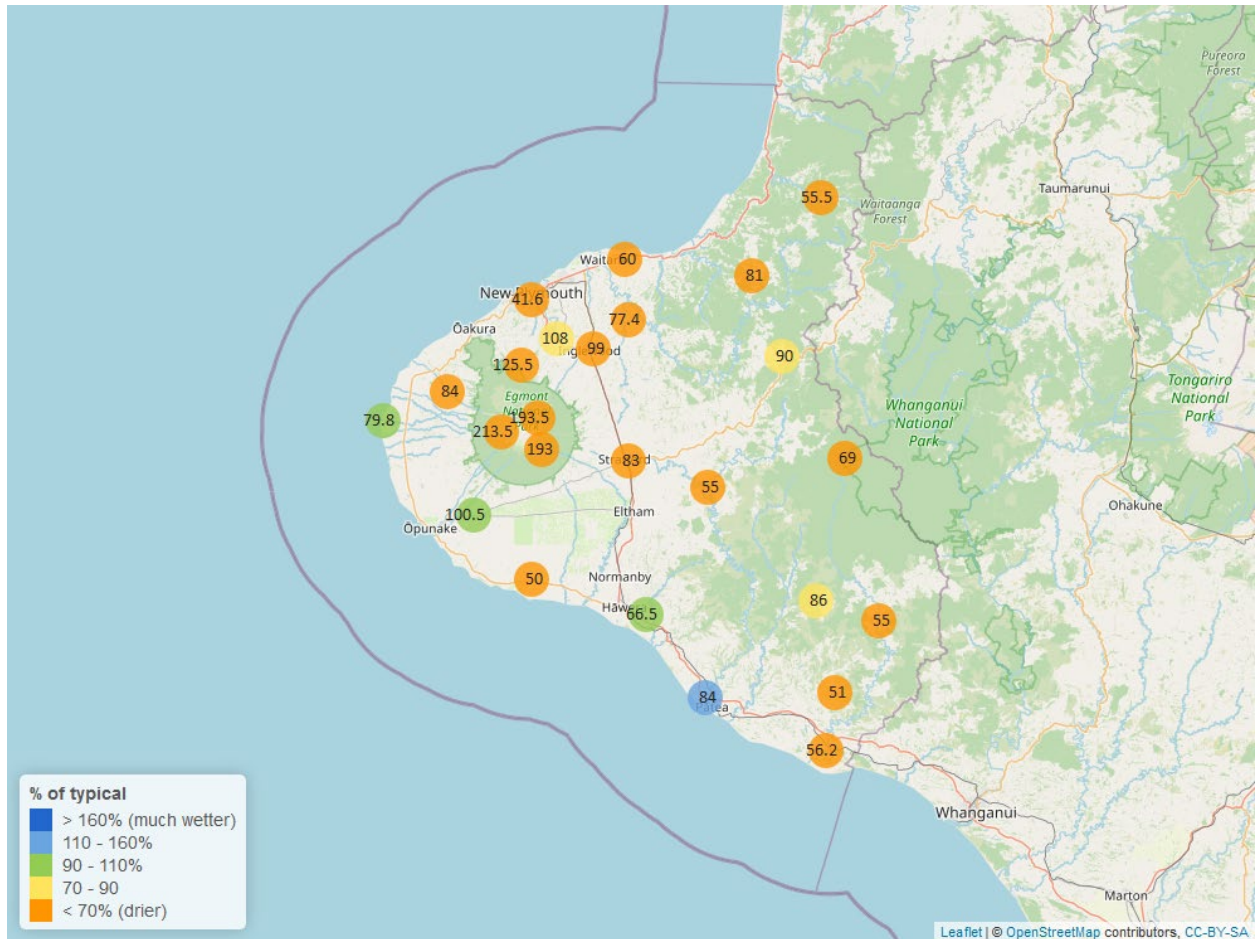


Taranaki Regional Council Monthly Rainfall and Environmental Data Report for March 2025

Note: The data presented here are provisional data only and may change as a result of quality control at a later date.

1. Rainfall

Map 1: March total rainfall (mm) and percentage of long-term mean (colour key).



Map 1a. Total rainfall 1 January to end March (mm) and percentage of long-term mean (colour key).

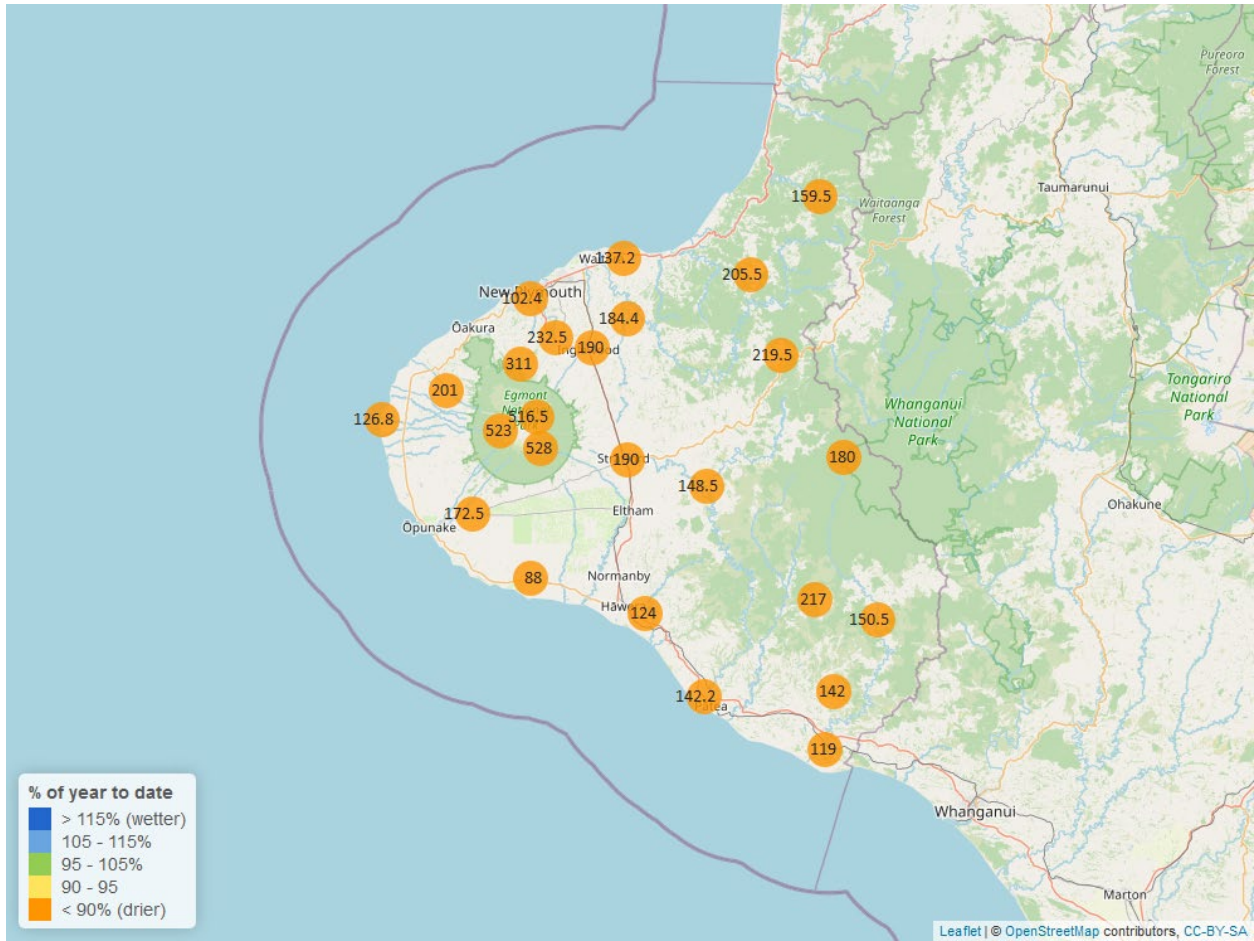


Table 1: Rainfall March and year-to-date totals for rain gauge sites in Taranaki.

Rain gauge	March			Year to Date			Records Began
	# days with rain	Total rain (mm)	% of typical month	Total to date (mm)	% of typical year to date	% of typical full year	
North Egmont at Visitors Centre	10	193.5	47.9	516.5	44.6	7.6	1996
Dawson Falls	10	193.0	54.4	528.0	51.8	8.3	1999
Kapoaiaia at Kahui Hut	15	236.0	74.6	545.5	62.6	10.4	2006
Mangorei Upper at Forest Hill	11	125.5	51.2	311.0	49.2	8.6	2018
Waiwhakaiho at Hillsborough	5	48.5	36.2	123.5	36.8	6.8	2013
Brooklands Zoo at New Plymouth	7	41.6	34.4	102.4	34.1	6.5	2012
Motunui M39 at Weston W3	9	60.0	60.4	137.2	47.8	8.7	1999
Waiwhakaiho at Egmont Village	9	108.0	70.6	232.5	53.6	9.7	1996
Manganui at Everett Park	6	51.5	42.0	158.5	42.2	7.6	1996
Inglewood at Oxidation Ponds	6	99.0	67.6	190.0	45.1	8.1	2000
Stony at Mangatete Bridge	9	84.0	67.0	201.0	53.9	10.1	2004
Kapoaiaia at Lighthouse	7	79.8	93.6	126.8	50.4	9.5	1999
Taungatara at Eltham Rd	11	100.5	101.2	172.5	63.6	11.0	2005
Kaupokonui at Glenn Rd	6	50.0	68.0	88.0	41.9	7.6	1998
Patea at Stratford	6	83.0	65.6	190.0	54.8	9.6	1999
Mangaehu at Bridge	5	55.0	52.6	148.5	50.0	9.4	1999
Kotare at OSullivans	8	55.5	45.1	159.5	41.5	7.4	1998
Uruti at Kaka Rd	8	81.0	62.8	205.5	51.9	9.3	1996
Pohokura Saddle	9	90.0	74.9	219.5	62.5	11.0	1996
Omaru at Charlies	8	69.0	56.9	180.0	55.8	9.9	2006
Omahine at Moana Trig	7	86.0	77.6	217.0	70.5	13.0	2007

Rain gauge	March			Year to Date			Records Began
	# days with rain	Total rain (mm)	% of typical month	Total to date (mm)	% of typical year to date	% of typical full year	
Waitotara at Rimunui Station	4	55.0	69.5	150.5	62.0	11.0	1996
Waitotara at Ngutuwera	4	51.0	62.1	142.0	58.8	11.1	1999
Tawhiti at Duffys	6	66.5	96.5	124.0	61.6	11.2	1996
Patea at Bore 3	7	84.0	118.8	142.2	66.3	12.1	2006
Waitotara at Hawken Rd	7	56.2	62.0	119.0	47.5	10.4	2016

Notes: Low and high values in tables refer to the upper and lower 5th percentiles of the historic record for each site (except for wind gust and soil moisture which are the upper and lower 1st percentiles). Percentile values give a better indication of the general upper and lower range of the historic data against which to compare the current month. Start year (records began) shows the length of data used to compute historic highs, lows, and "typical values". Sites with a longer data record will generally provide a more reliable comparison to values in the current year.

1.2 Long-term data patterns

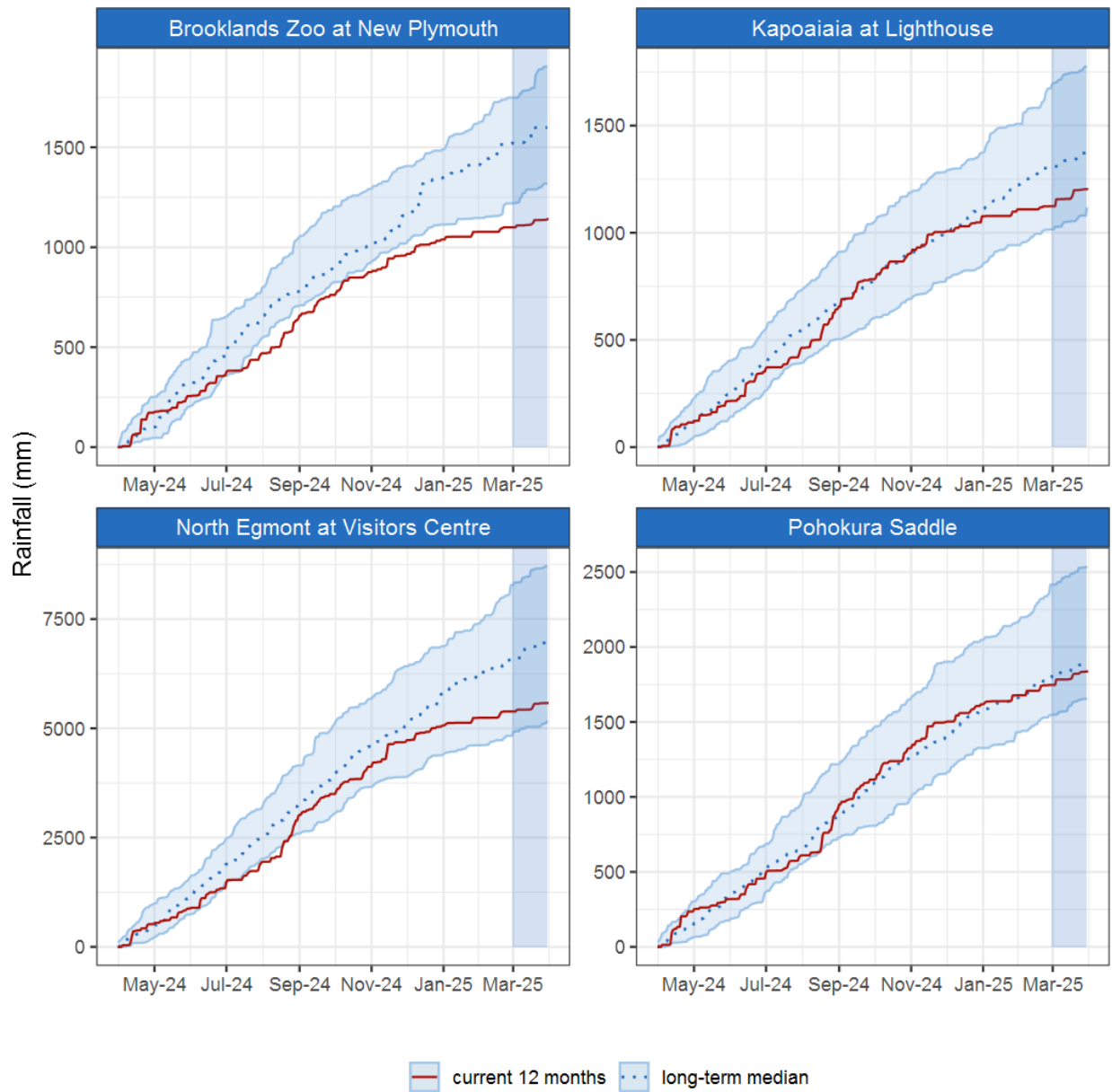


Figure 1.1: This year's and last year's data set in context of historic record at selected rain gauge sites in Taranaki.

1.3 Monthly Bar Charts

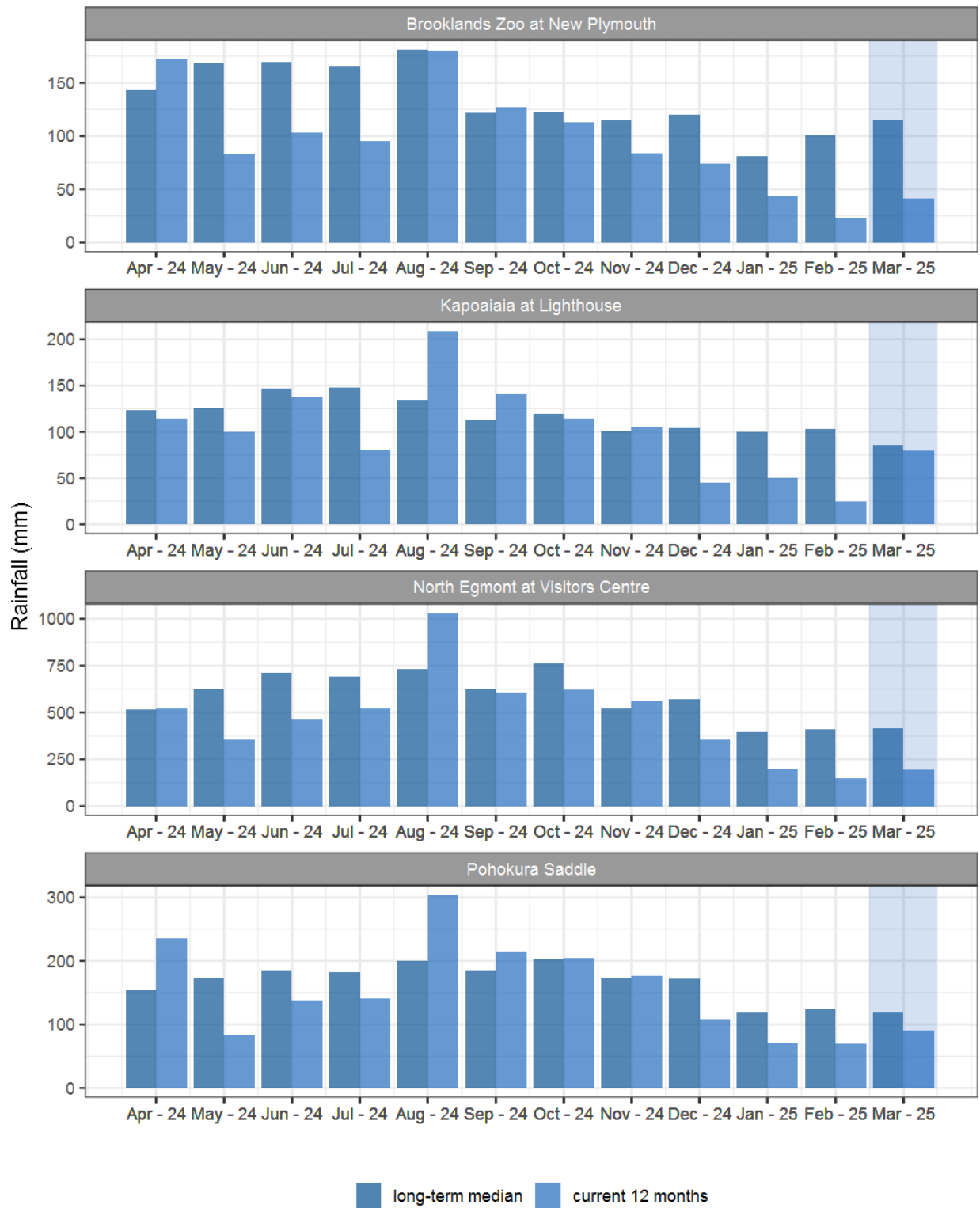


Figure 1.2: Monthly rainfall totals for this month and the mean of all previously recorded months.

2. River Flow

Map 2: March mean river flows (m3/sec), with difference as percentage of long-term mean.

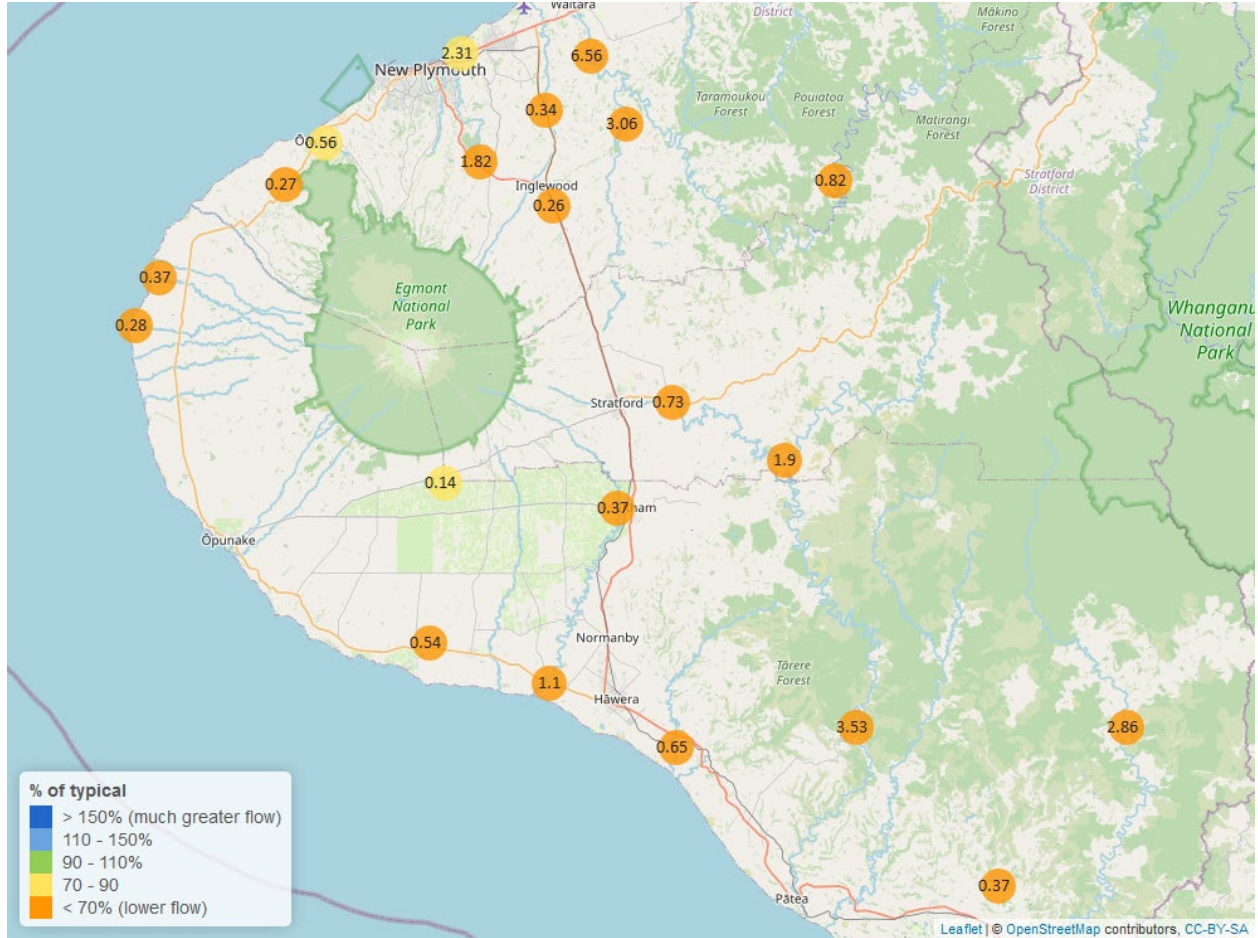


Table 2: Summary of high, low and mean flow for March and for March in all preceding years of record.

March 2025 - Recorded flows (m3/sec)								
River and Site	Highs		Lows		Mean		March maximum	Data years
	current month	historic	current month	historic	current month	historic		
Kapoaiaia at Lighthouse	0.73	1.80	0.23	0.23	0.28	0.40	3.59	39
Kaupokonui at Glenn Rd	1.16	4.32	0.51	0.61	0.54	1.07	3.32	46
Mangaehu at Bridge	5.10	21.12	1.76	1.73	1.90	3.58	11.65	47
Manganui at Everett Park	5.52	28.61	2.89	2.90	3.06	5.28	7.75	32
Mangawheroiti Above Intake W.W	0.17	0.44	0.12	0.12	0.14	0.18	0.50	12

March 2025 - Recorded flows (m3/sec)								
River and Site	Highs		Lows		Mean		March maximum	Data years
	current month	historic	current month	historic	current month	historic		
Moumahaki at Johnston Rd	0.58	2.82	0.33	0.37	0.37	0.67	0.77	6
Ngatoro at SH3	0.47	2.34	0.25	0.24	0.26	0.40	1.45	35
Oakura at Victoria Rd	2.21	5.95	0.46	0.38	0.56	0.79	12.92	6
Patea at McColls Bridge	9.70	49.15	2.71	1.98	3.53	5.99	35.07	36
Patea at Skinner Rd	1.20	8.64	0.67	0.54	0.73	1.47	2.92	47
Tangahoe below Railway Bridge	1.70	6.31	0.56	0.93	0.65	1.53	2.27	7
Timaru at Tataraimaka	0.70	2.22	0.24	0.26	0.27	0.56	4.16	11
Waingongoro at Eltham Rd	0.72	4.30	0.34	0.34	0.37	0.72	2.17	50
Waingongoro at SH45	1.94	9.92	1.02	1.03	1.10	2.08	3.25	44
Waiongana at SH3a	0.75	4.54	0.32	0.33	0.34	0.71	4.29	44
Waitara at Bertrand Rd	15.23	106.08	5.40	5.72	6.56	14.23	28.59	45
Waitara at Purangi Bridge	7.00	31.91	0.48	0.49	0.82	2.04	15.64	26
Waitotara at Rimunui Station	6.78	21.34	2.21	2.16	2.86	4.91	13.23	19
Waiwhakaiho at Egmont Village	3.97	16.20	1.73	1.77	1.82	2.84	16.78	45
Waiwhakaiho at Vickers Rd	6.74	23.32	1.79	1.94	2.31	3.10	37.91	5
Warea at Coast	0.85	1.54	0.31	0.31	0.37	0.56	4.11	9

2.2 Long-term data patterns

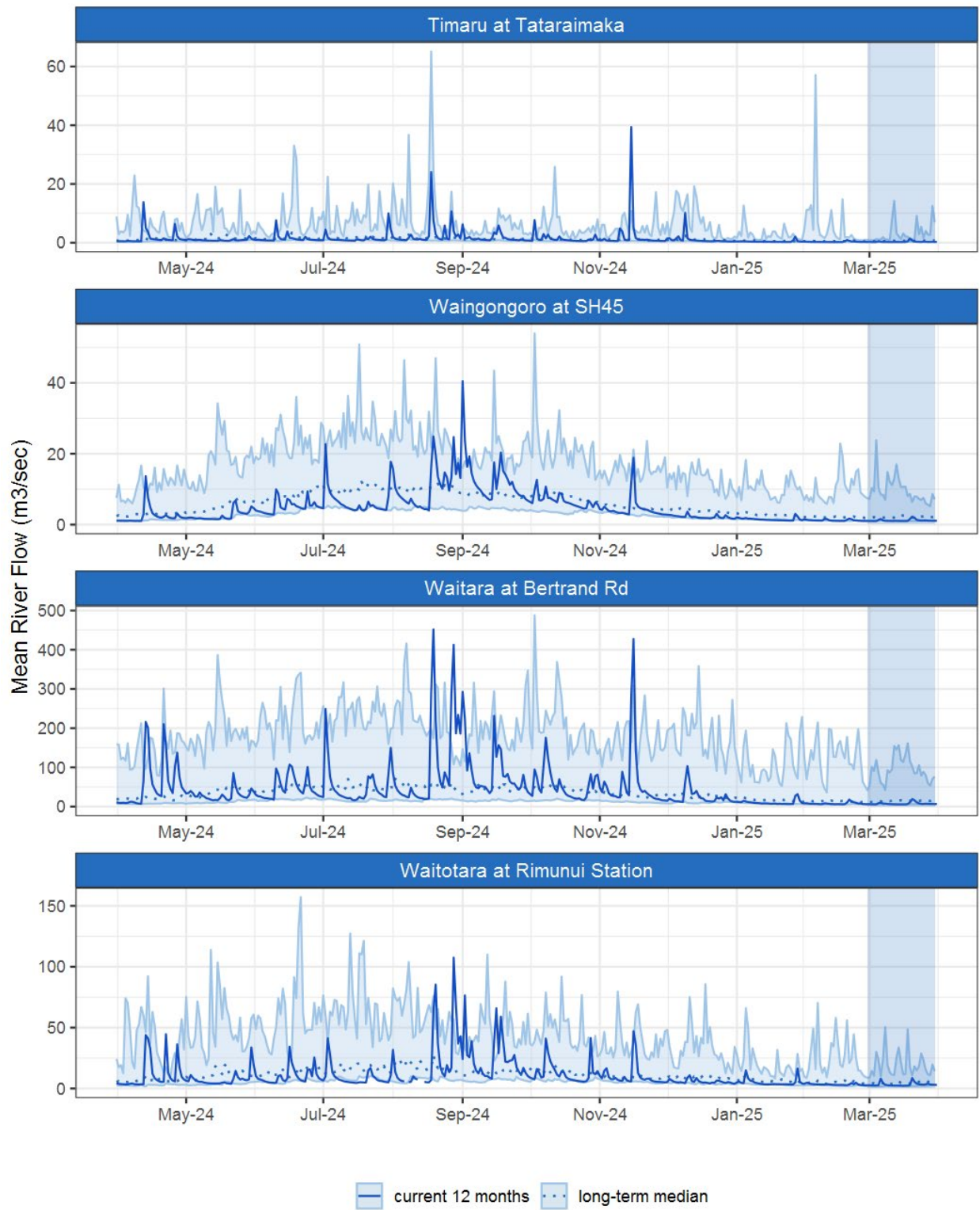


Figure 2.1: Running average river flows for selected sites, set in context of the historic record.

2.3 Monthly Bar Charts

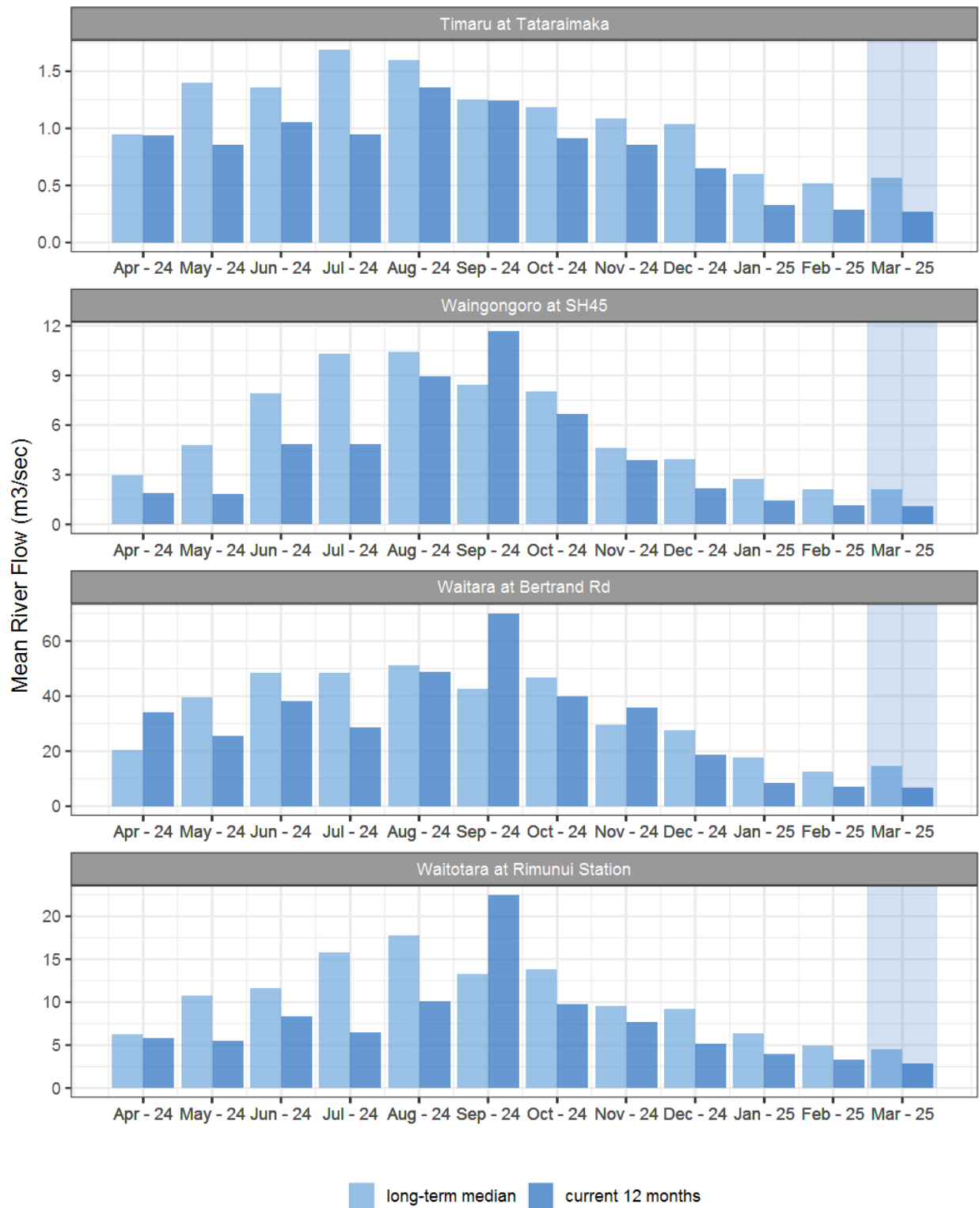


Figure 2.2: Monthly mean river flow for this month and the mean of all previously recorded months.

3. River Temperature

Map 3: March mean water temperature with difference to long-term mean (°C).

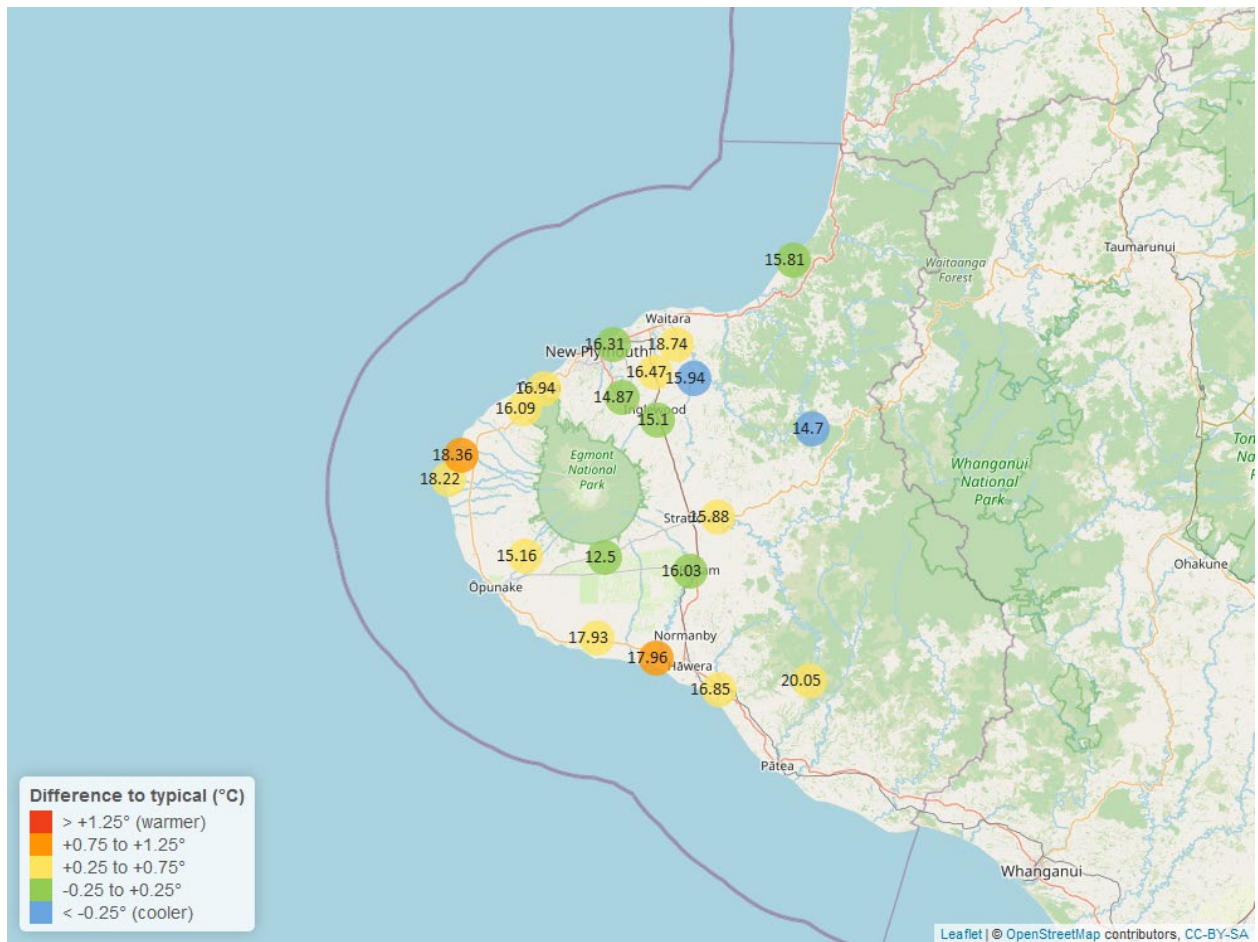


Table 3: Summary of high, low and mean river temperature for March and for March in all preceding years of record.

March 2025 - River Temperature (°C)								
River and Site	Highs		Lows		Mean		March maximum	Data years
	current month	historic	current month	historic	current month	historic		
Kapoaiaia at Lighthouse	21.35	21.40	14.81	14.12	18.22	17.75	24.16	25
Kaupokonui at Glenn Rd	21.50	21.14	14.37	13.71	17.93	17.36	24.40	36
Manganui at Everett Park	18.89	19.26	14.27	13.57	15.94	16.41	20.08	16
Mangaone 3 at Stub Rd	18.48	18.53	14.37	13.70	16.31	16.28	20.60	5
Mangawheroiti Above Intake W.W	14.30	14.46	10.98	10.00	12.50	12.33	16.44	12
Matau at Woolshed	16.91	18.44	12.55	11.80	14.70	15.04	19.04	7
Ngatoro at SH3	17.52	17.89	13.08	12.16	15.10	15.11	18.69	23
Oakura at Victoria Rd	19.11	19.33	14.21	13.35	16.94	16.26	21.47	6
Patea at McColls Bridge	22.29	22.25	19.00	17.54	20.05	19.71	23.70	10
Patea at Skinner Rd	18.37	18.19	13.97	12.47	15.88	15.41	19.92	21
Tangahoe below Railway Bridge	19.04	19.59	14.82	13.44	16.85	16.58	25.24	7
Timaru at Tataraimaka	18.10	18.51	13.83	13.12	16.09	15.84	19.98	10
Waiaua 2 at Barraclough Opua	19.10	18.86	12.07	10.79	15.16	14.68	21.22	6
Waikaramarama at Bridge	17.64	18.01	13.93	13.21	15.81	16.01	19.50	7
Waingongoro at Eltham Rd	18.49	18.79	13.61	12.76	16.03	15.81	20.37	21
Waingongoro at SH45	20.41	20.12	15.93	14.02	17.96	17.19	22.08	20
Waiongana at SH3a	18.69	18.62	14.23	12.95	16.47	15.85	20.95	13
Waitara at Bertrand Rd	21.40	21.19	17.33	15.50	18.74	18.10	23.70	37
Waiwhakaiho at Egmont Village	17.00	17.26	12.55	11.84	14.87	14.68	18.92	34
Warea at Coast	21.47	21.66	14.53	13.63	18.36	17.59	24.33	6

3.2 Long-term data patterns

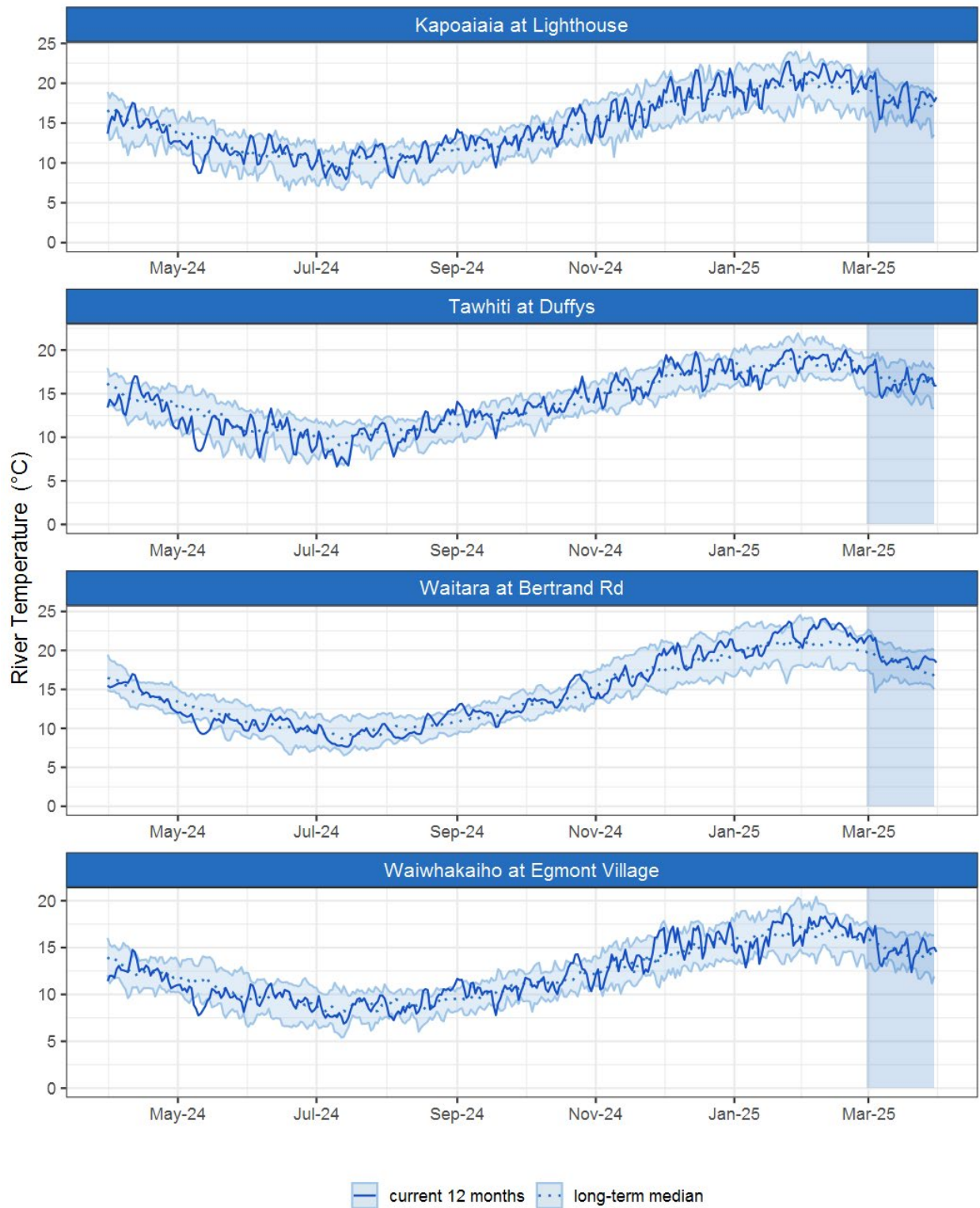


Figure 3.1: Running average river temperature for selected sites, set in context of the historic record.

3.3 Monthly Bar Charts

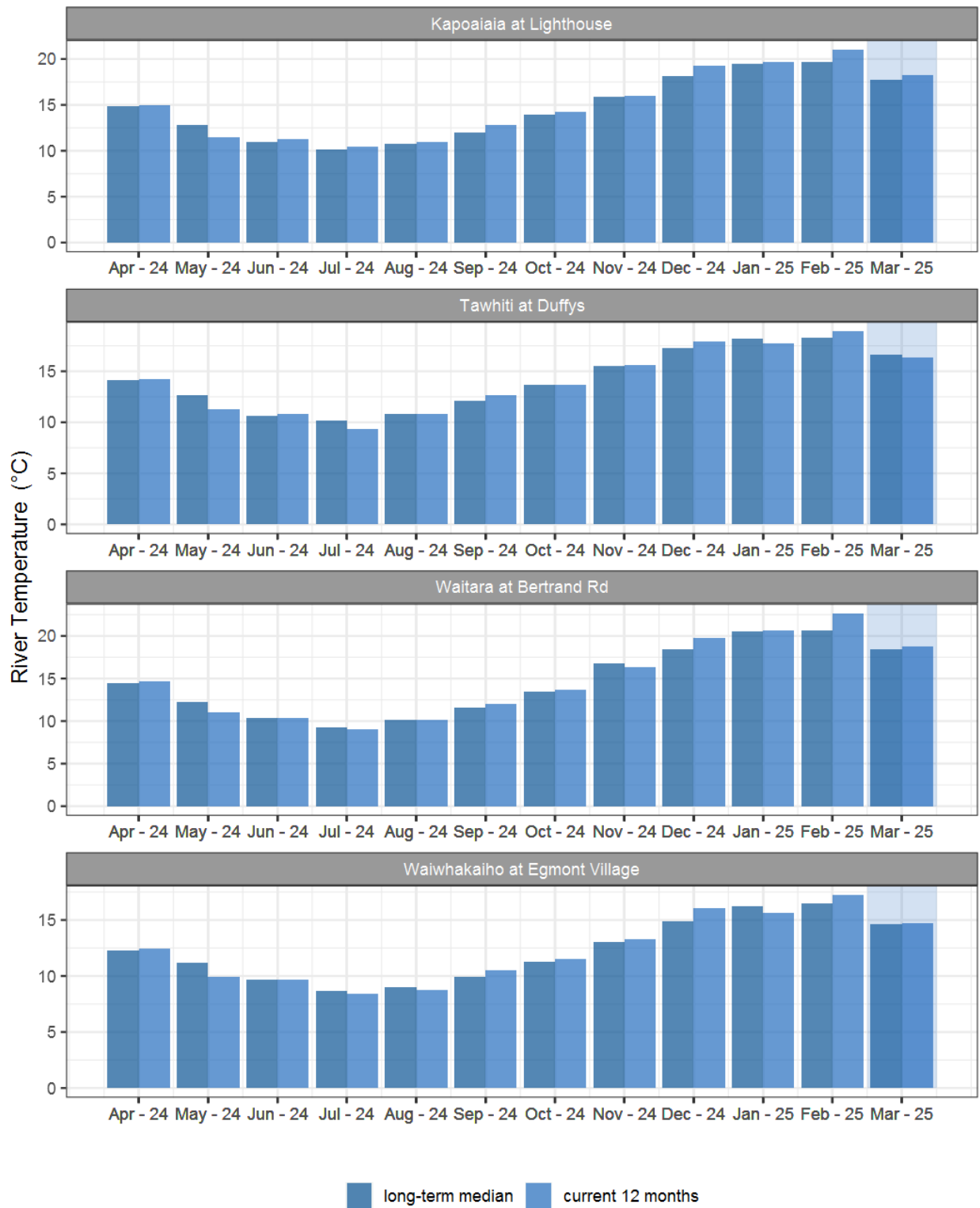


Figure 3.2: Monthly mean river temperature for this month and the mean of all previously recorded months.

4. Air Temperature

Map 4: March mean air temperature with difference to long-term mean (°C).

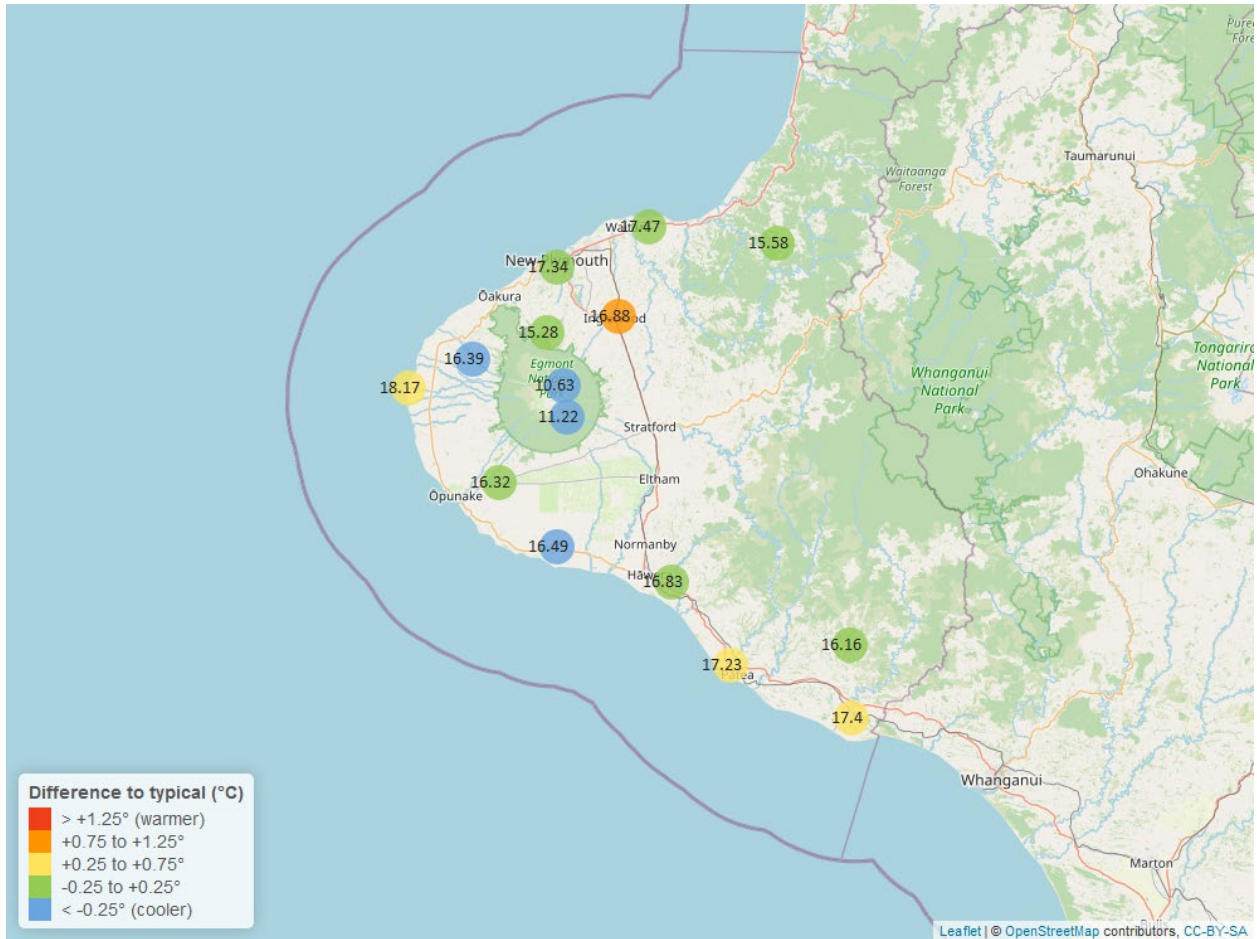


Table 4: Summary of high, low and mean air temperature for March and for March in all preceding years of record.

March 2025 - Air Temperature (°C)								
Site	Highs		Lows		Mean		March maximum	Data years
	current month	historic	current month	historic	current month	historic		
Brooklands Zoo at New Plymouth	23.11	23.63	11.57	11.44	17.34	17.45	25.41	12
Dawson Falls	17.04	17.19	7.44	6.27	11.22	12.17	21.24	9
Inglewood at Oxidation Ponds	24.60	23.00	10.72	9.36	16.88	15.98	30.98	13
Kapoiaiaia at Lighthouse	21.13	21.45	13.08	12.21	18.17	17.73	22.56	13
Kaupokonui at Glenn Rd	20.75	22.45	10.54	10.32	16.49	17.03	24.75	10

March 2025 - Air Temperature (°C)								
	Highs		Lows		Mean			
Site	current month	historic	current month	historic	current month	historic	March maximum	Data years
Mangorei Upper at Forest Hill	19.69	19.69	10.52	10.33	15.28	15.32	21.45	8
Motunui M39 at Weston W3	21.48	21.84	11.84	11.12	17.47	17.24	23.05	8
North Egmont at Visitors Centre	15.74	17.21	6.27	6.26	10.63	12.24	18.45	10
Patea at Bore 3	21.02	22.04	12.37	10.99	17.23	16.88	24.35	13
Stony at Mangatete Bridge	20.57	21.91	12.01	10.95	16.39	16.99	22.81	9
Taungatara at Eltham Rd	20.35	21.38	11.35	10.42	16.32	16.39	22.61	9
Tawhiti at Duffys	21.42	22.33	7.99	6.80	16.83	16.77	24.07	12
Uruti at Kaka Rd	20.61	21.16	11.17	9.93	15.58	15.56	21.95	6
Waitotara at Hawken Rd	22.11	22.64	11.79	10.29	17.40	16.86	26.20	7
Weraweraonga at Mangawhio Rd	22.64	23.20	8.49	8.08	16.16	16.29	25.64	7

4.2 Long-term data patterns



Figure 4.1: Running average air temperature for selected sites, set in context of the historic record.

4.3 Monthly Bar Charts

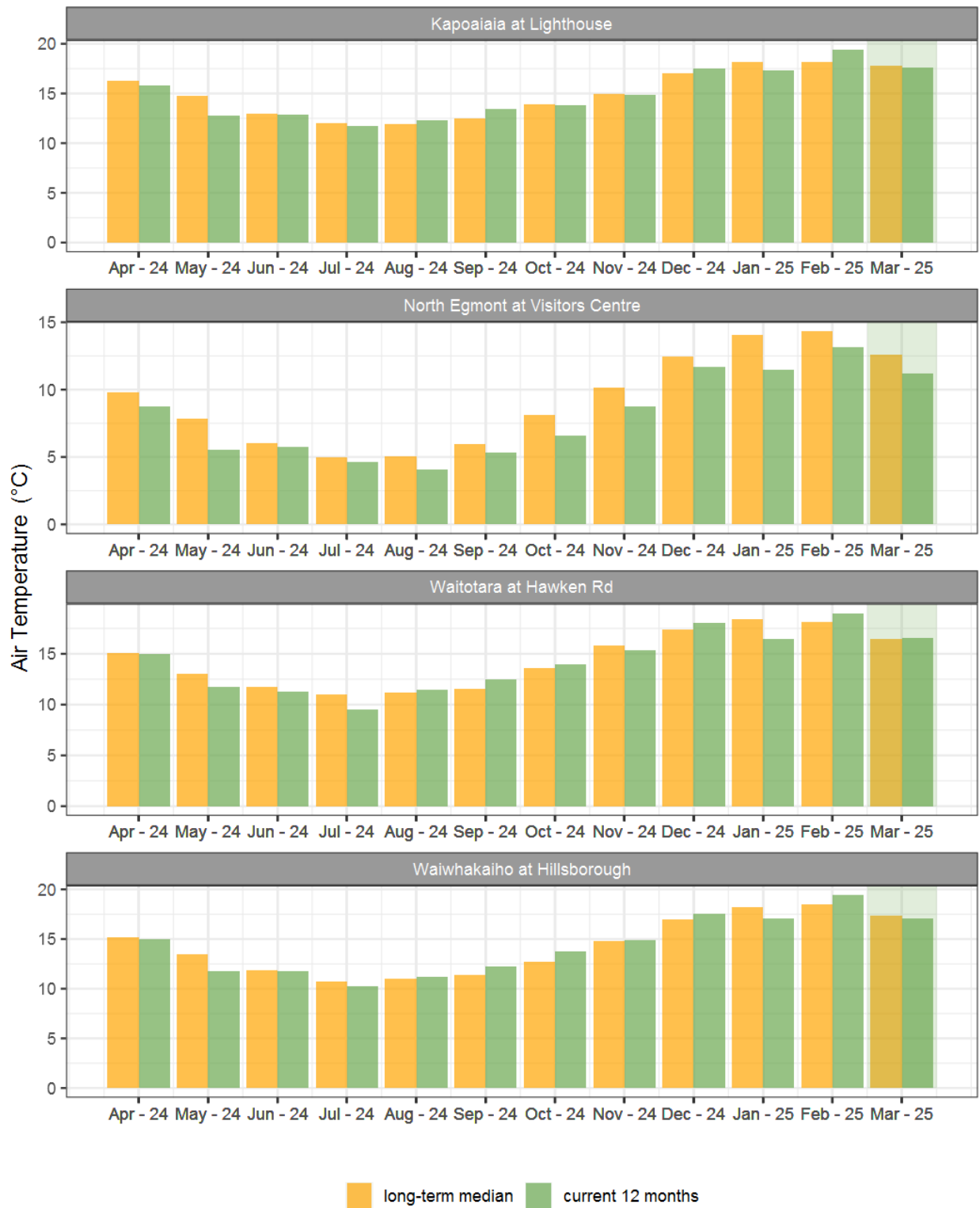


Figure 4.2: Monthly mean air temperature for March and the mean of all previously recorded months.

5. Soil Moisture

Map 5: March mean soil moisture content (%).

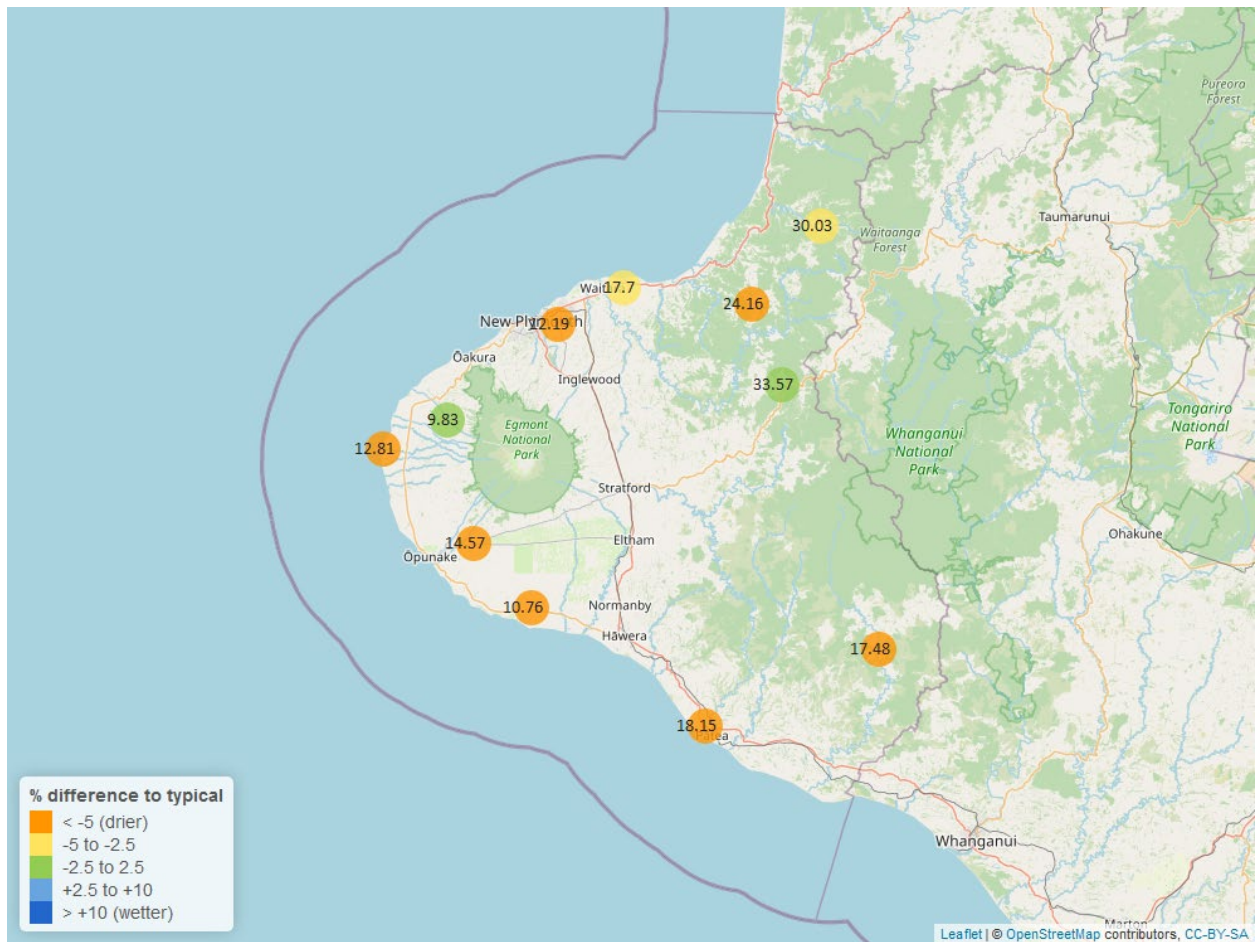


Table 5: Summary of high, low and mean soil moisture for March and for March in all preceding years of record.

March 2025 - Soil Moisture (%)								
Site	Highs		Lows		Mean		March maximum	Data years
	current month	historic	current month	historic	current month	historic		
Kapoaiaia at Lighthouse	15.94	27.16	10.07	7.26	12.81	18.77	16.03	13
Kaupokonui at Glenn Rd	13.14	32.24	10.42	9.05	10.76	19.40	13.25	14
Kotare at OSullivans	32.08	44.94	26.32	18.83	30.03	33.00	32.35	13
Motunui M39 at Weston W3	20.72	29.36	16.64	13.63	17.70	21.78	21.01	11
Patea at Bore 3	22.44	27.49	14.32	18.33	18.15	24.26	23.12	8
Pohokura Saddle	36.71	44.84	29.42	25.12	33.57	35.67	38.70	10
Stony at Mangatete Bridge	10.77	17.22	7.96	5.39	9.83	11.67	12.82	9
Taungatara at Eltham Rd	22.96	35.13	10.04	13.66	14.57	20.87	23.72	11
Uruti at Kaka Rd	27.41	41.80	20.38	16.62	24.16	35.25	27.70	13
Waitotara at Rimunui Station	17.74	27.86	16.27	15.67	17.48	23.30	17.83	8
Waiwhakaiho at Hillsborough	14.21	27.05	11.81	11.36	12.19	21.35	14.66	12

5.2 Long-term data patterns



Figure 5.1: Running average soil moisture for selected sites, set in context of the historic record.

5.3 Monthly Bar Charts

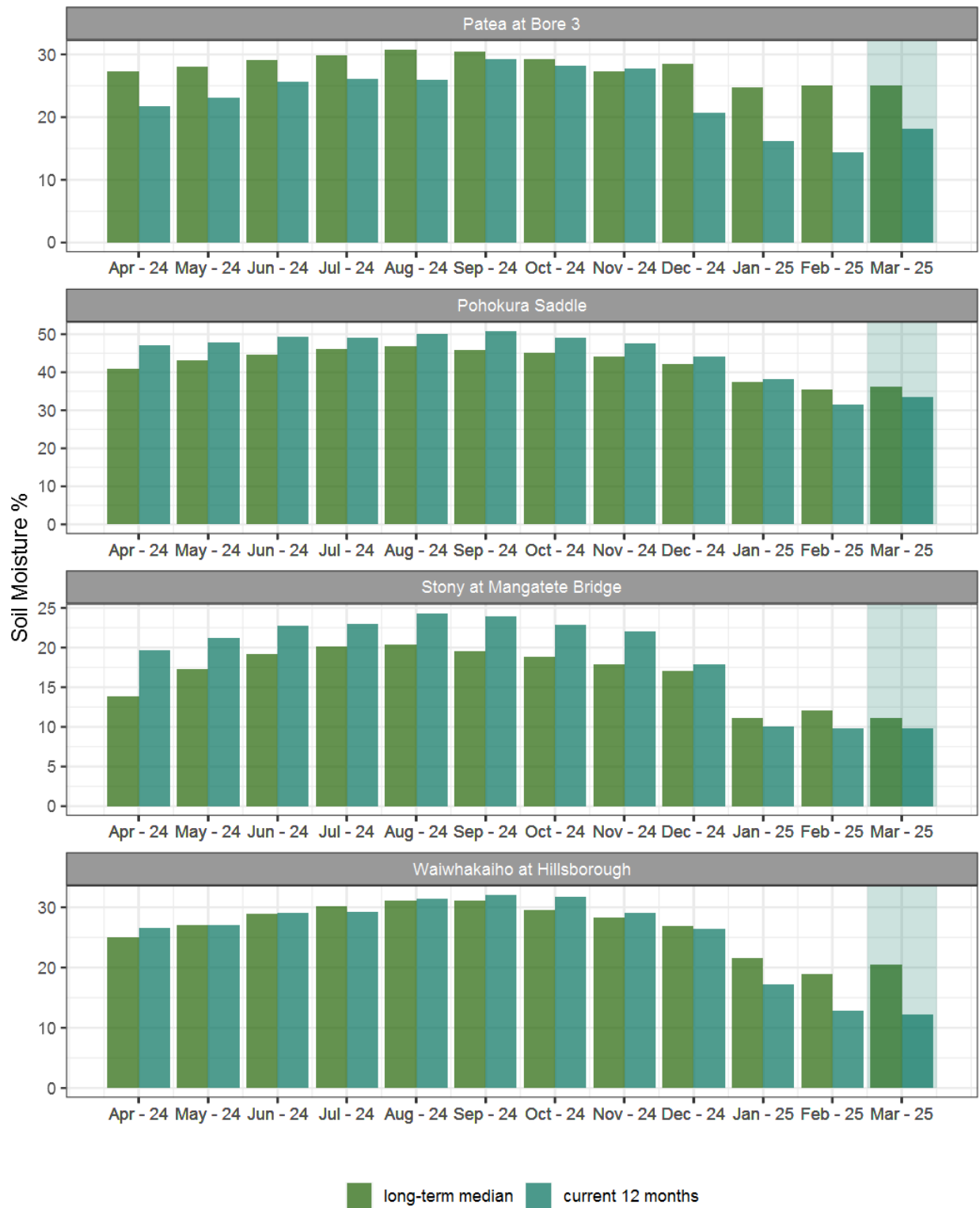


Figure 5.2: Monthly mean soil moisture for this month and the mean of all previously recorded months.

6. Soil Temperature

Map 6: March mean soil temperatures with difference to long-term mean (°C).

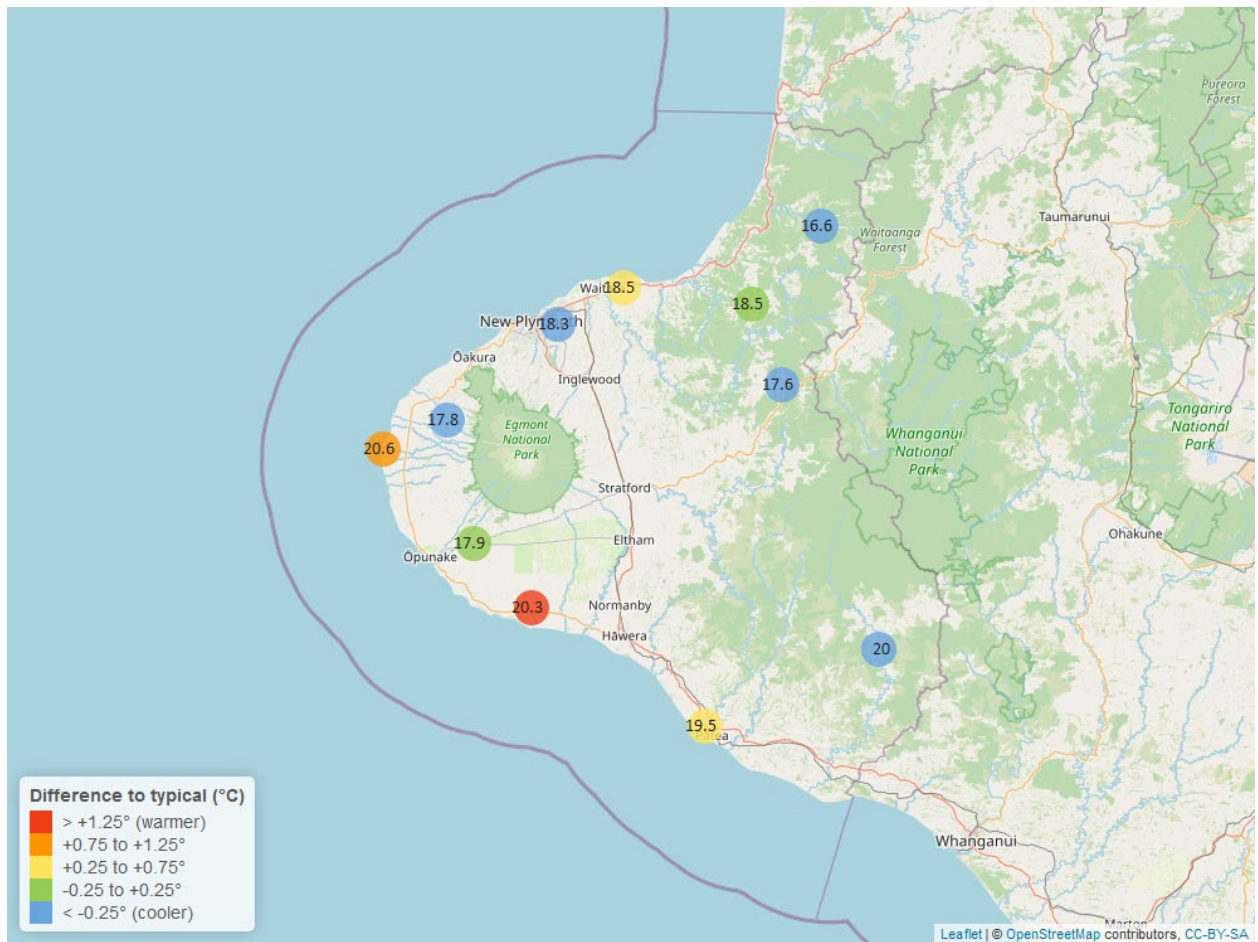


Table 6: Summary of high, low and mean soil temperature for March and for March in all preceding years of record.

March 2025 - Soil Temperatures (°C)								
Site	Highs		Lows		Mean		March maximum	Data years
	current month	historic	current month	historic	current month	historic		
Kapoaiaia at Lighthouse	23.78	22.54	17.74	16.97	20.6	19.61	26.54	13
Kaupokonui at Glenn Rd	23.16	21.44	17.80	16.16	20.3	18.56	24.40	14
Kotare at OSullivans	18.11	20.30	16.10	15.20	16.6	17.81	18.34	13
Motunui M39 at Weston W3	20.70	19.80	17.25	15.85	18.5	17.88	21.23	11
Patea at Bore 3	23.28	21.69	17.60	16.38	19.5	18.99	24.47	8
Pohokura Saddle	20.01	20.40	16.28	15.80	17.6	18.26	20.56	10
Stony at Mangatete Bridge	19.84	21.26	16.11	15.80	17.8	18.80	20.40	8
Taungatara at Eltham Rd	19.90	20.26	15.94	15.50	17.9	18.07	21.30	11
Uruti at Kaka Rd	20.37	20.41	17.85	16.48	18.5	18.61	20.52	13
Waitotara at Rimunui Station	22.82	23.22	18.31	17.28	20.0	20.34	24.58	6
Waiwhakaiho at Hillsborough	20.54	20.54	17.02	16.50	18.3	18.63	21.20	12

6.2 Long-term data patterns

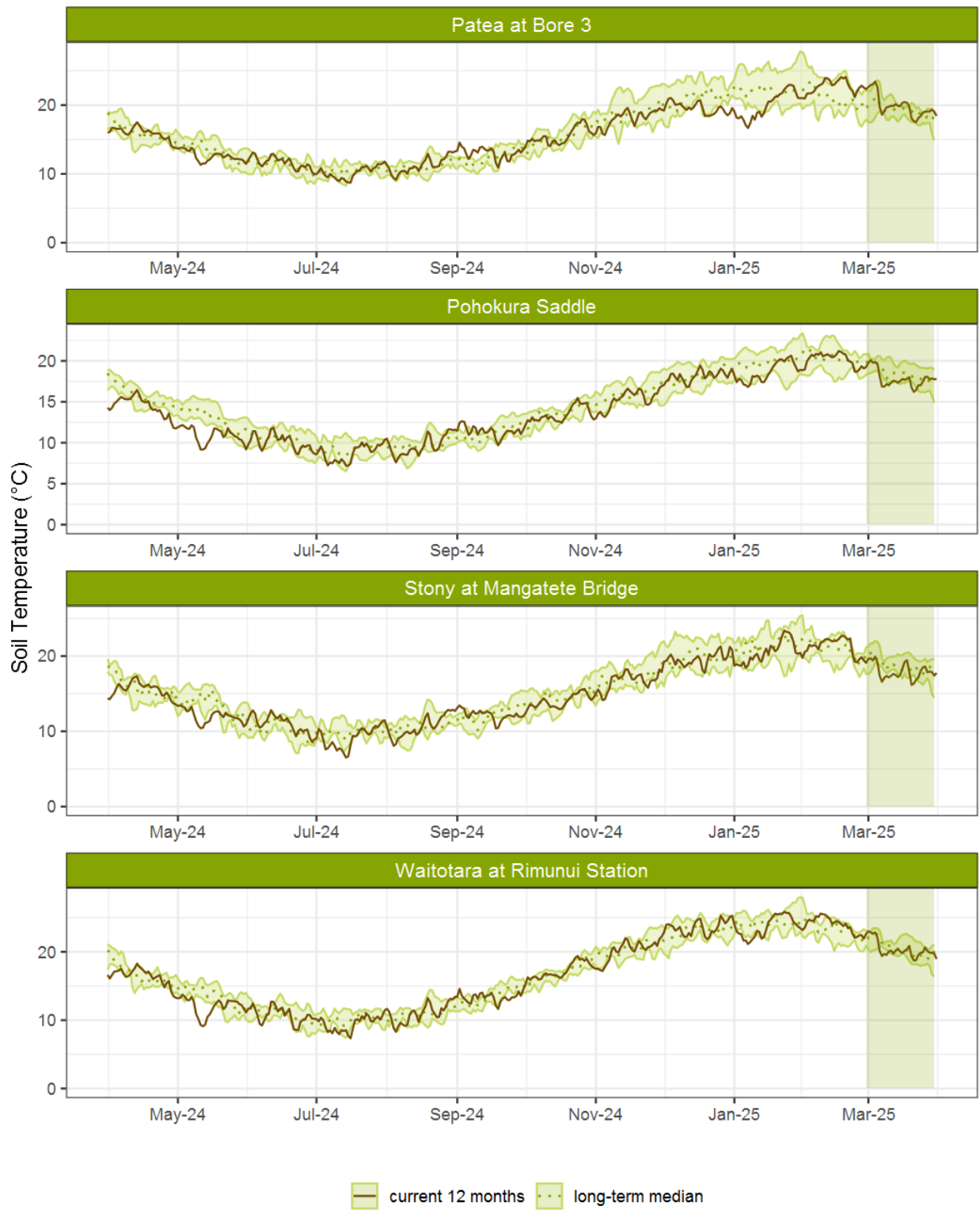


Figure 6.1: Running average soil temperature for selected sites, set in context of the historic record.

6.3 Monthly Bar Charts

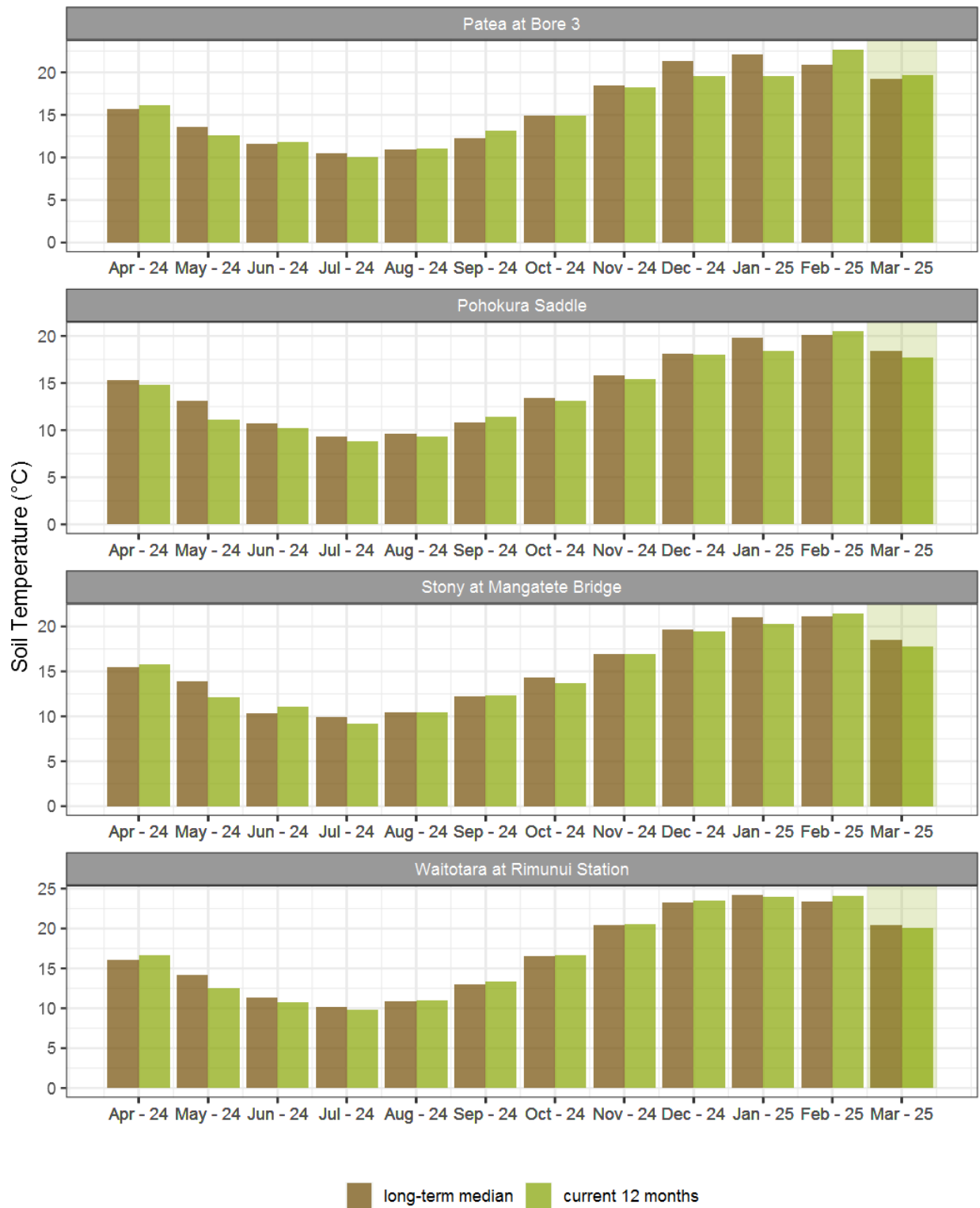


Figure 6.2: Monthly mean soil temperature for this month and the mean of all previously recorded months.

7. Wind Speed and Maximum Gusts

Map 7: March mean of wind speed with difference to long-term values (km/hr).

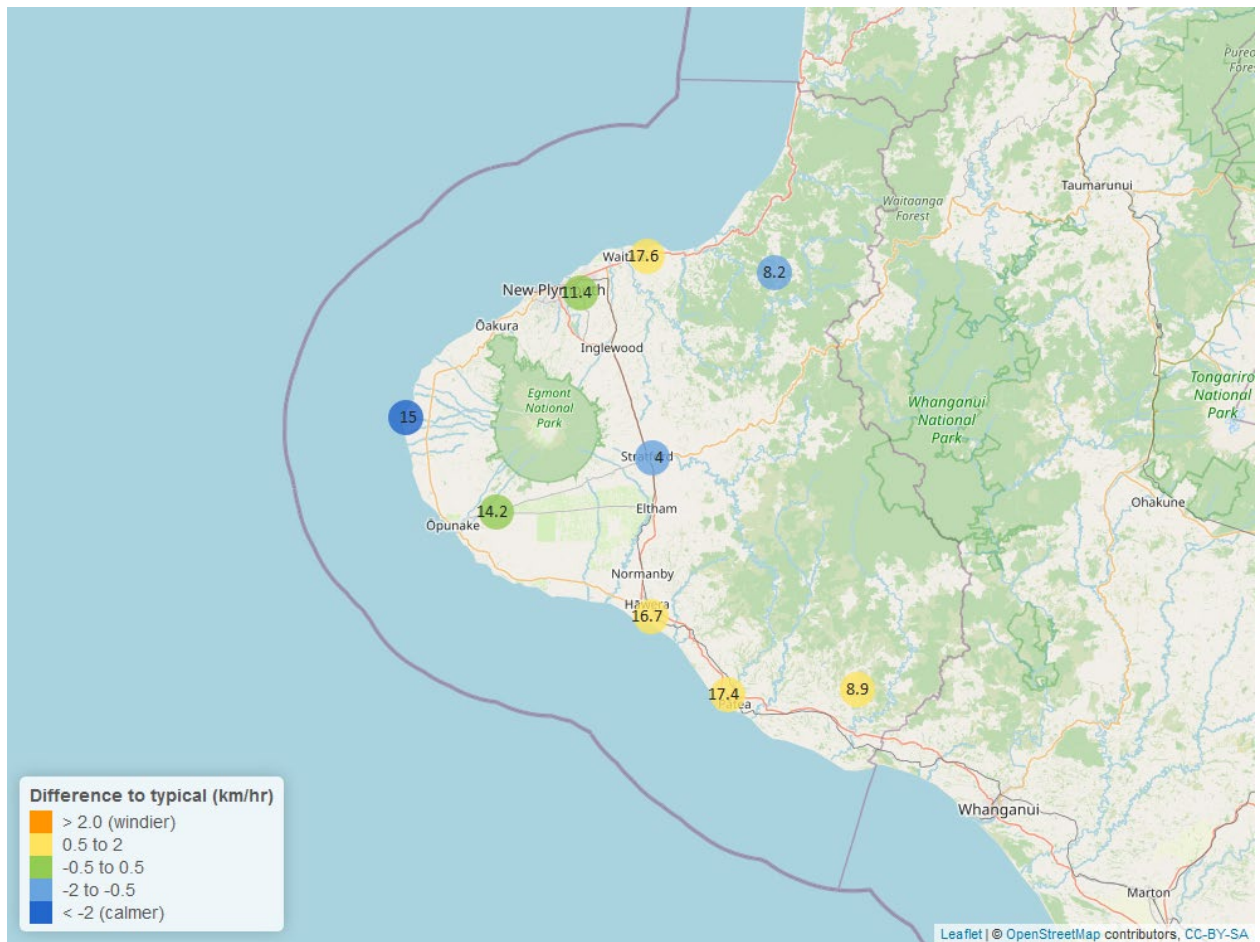


Table 7: Summary of high, low and mean wind speed for March and for March in all preceding years of record.

March 2025 - Wind Speed (average) - (km/hr)								
	Highs		Lows		Mean			
Site	current month	historic	current month	historic	current month	historic	March maximum	Data years
Hawera AWS	34.12	36.11	6.48	5.56	16.7	15.74	55.56	20
Kapoaiaia at Lighthouse	31.91	39.52	5.83	6.21	15.0	17.88	52.42	25
New Plymouth AWS	35.19	37.04	6.48	5.56	17.6	16.67	58.34	17
Patea at Bore 3	34.19	37.80	6.43	5.91	17.4	16.39	53.95	9
Patea at Stratford	11.42	16.12	1.85	1.89	4.0	5.52	23.21	19
Taungatara at Eltham Rd	30.20	30.94	6.58	6.20	14.2	14.40	44.22	9
Uruti at Kaka Rd	19.34	21.37	3.08	3.14	8.2	8.88	35.02	28
Waitotara at Ngutuwera	18.25	20.65	2.37	1.75	8.9	8.42	32.07	26
Waiwhakaiho at Hillsborough	28.71	30.69	3.77	3.94	11.4	11.68	39.14	7

Table 8: Summary of high, low and maximum wind gusts for March and for March in all preceding years of record.

March 2025 - Wind Gusts (Maximum) - (km/hr)								
	Highs		Lows		Mean			
Site	current month	historic	current month	historic	current month	historic	March maximum	Data years
Hawera AWS	72.23	72.23	25.93	22.22	42.6	42.60	83.34	20
Kapoaiaia at Lighthouse	64.44	78.60	19.08	22.30	31.0	43.50	74.52	25
New Plymouth AWS	79.64	68.52	25.93	22.22	42.6	42.60	81.49	17
Patea at Bore 3	64.60	72.80	26.40	23.60	44.3	44.10	82.10	9
Patea at Stratford	51.84	56.80	15.84	18.70	27.4	30.90	64.44	19
Taungatara at Eltham Rd	79.40	71.60	24.20	23.30	36.7	39.80	82.30	9
Uruti at Kaka Rd	68.40	61.56	23.40	20.80	35.3	33.90	74.52	25
Waitotara at Ngutuwera	74.16	65.50	22.32	19.90	38.5	35.64	76.68	26
Waiwhakaiho at Hillsborough	72.10	66.20	28.40	21.60	38.5	37.70	81.00	7

7.2 Long-term data patterns

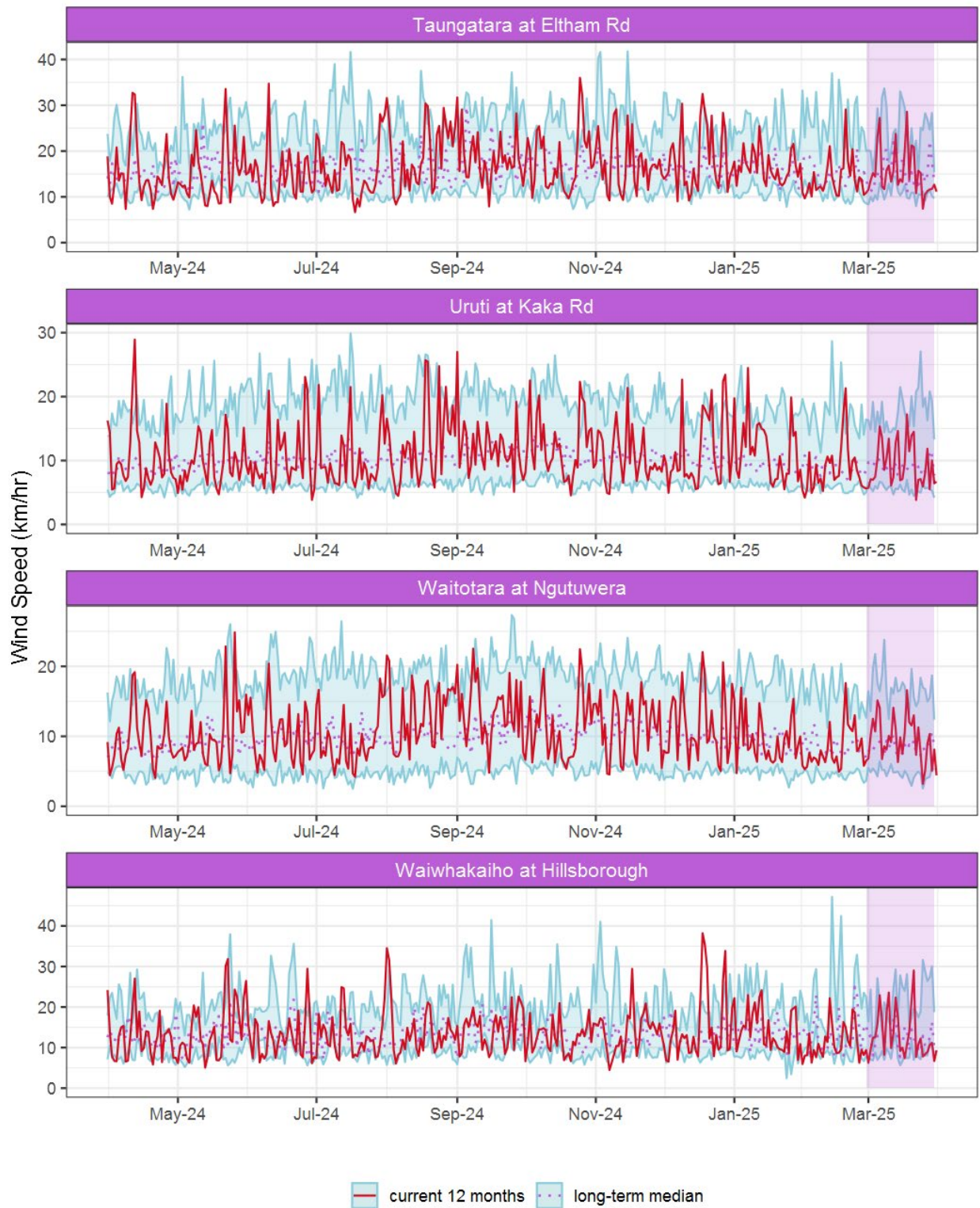


Figure 7.1: Running average wind speed (km/hr) for selected sites, set in context of the historic record.

7.3 Monthly Bar Charts

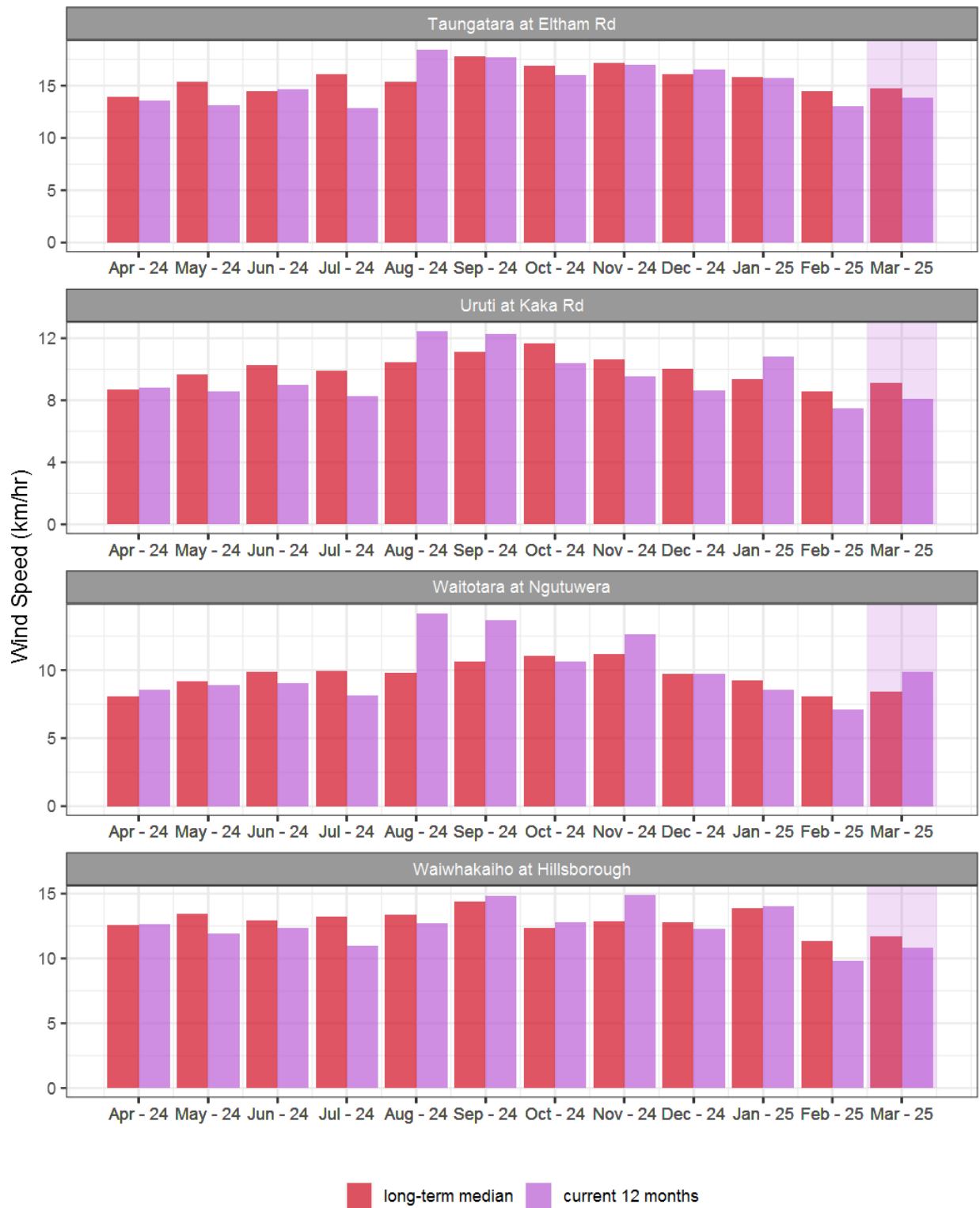


Figure 7.2: Monthly mean wind speed (km/hr) for selected sites, relative to the mean of all previously recorded months.

7.4 Wind roses for March 2025

Average wind speed

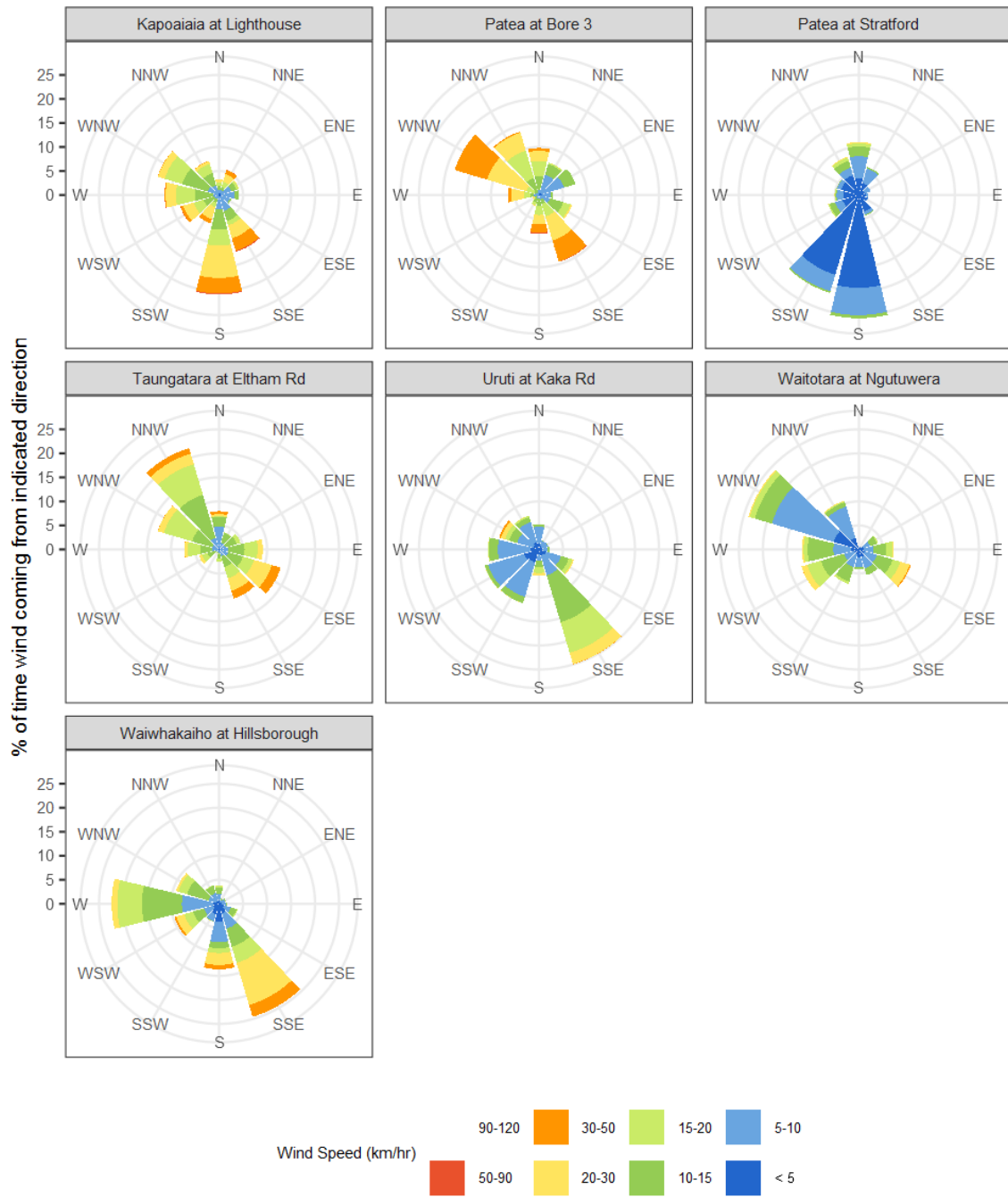


Figure 7.3: Wind roses for March for average wind speed (km/hr).

Maximum gust strength

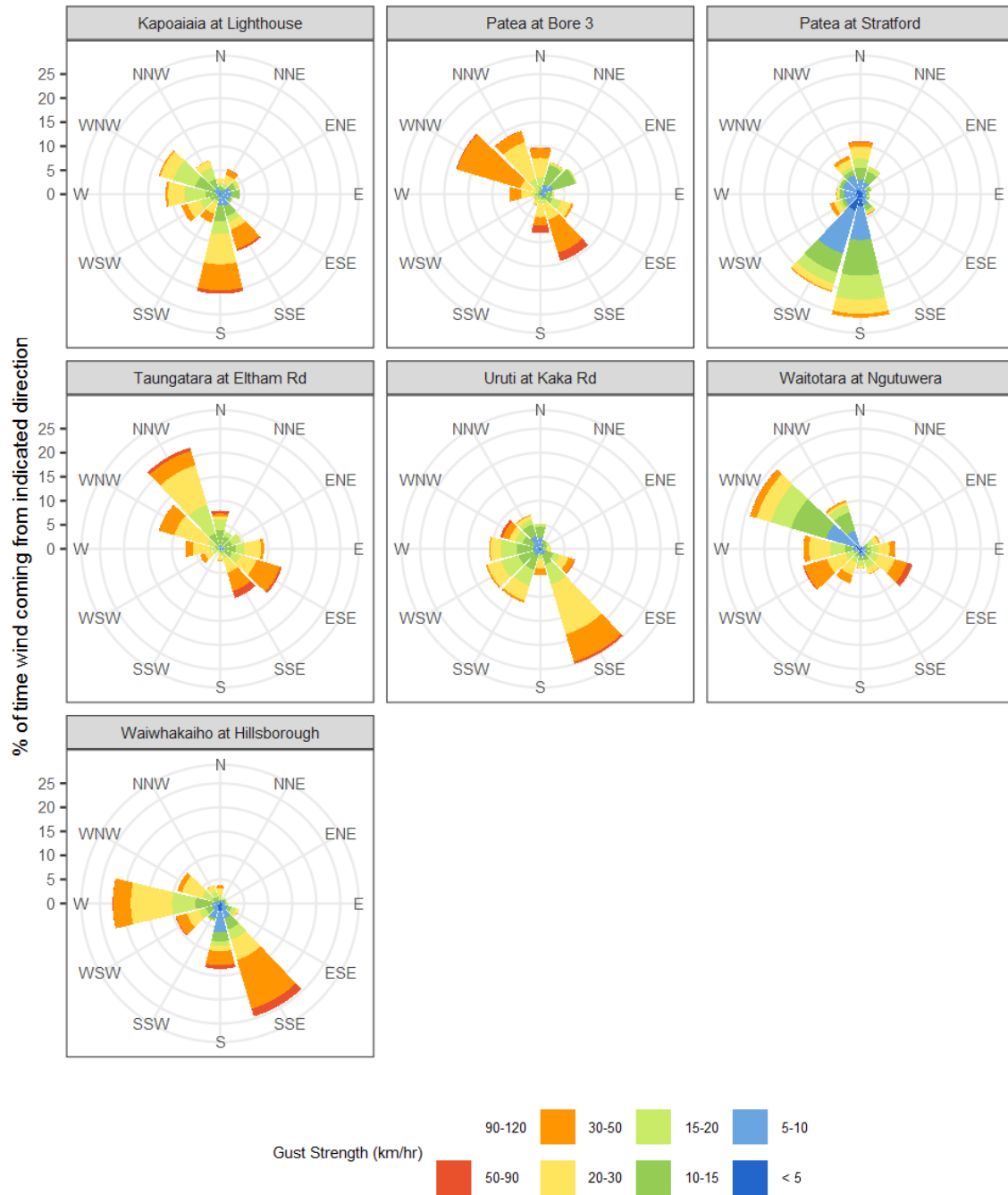


Figure 7.4: Wind roses for March for maximum wind gust (km/hr).

Summary of month's conditions

Rainfall

On average March rainfall was 153.6mm, 31% less than usual, ranging from 66% less at Brooklands Zoo at New Plymouth, and 19% more at Patea at Bore 3.

Year-to-date rainfall is lowest at Brooklands Zoo at New Plymouth with 66% less rainfall than normal, Omahine at Moana Trig has had the highest year to date rainfall with 30% less rainfall. On average there has been 47% less than normal across all rain gauges. Compared to typical full year totals, on average sites have already received 10% of a typical year's rainfall, with the highest value at Omahine at Moana Trig, 13% of normal, whereas Brooklands Zoo at New Plymouth sits at 6% of the typical year's total.

River Flow

Mean river flows for March were 48% lower than typical values, low flows were 10.9% lower, and high flows 73% lower than typical values. The maximum river flow recorded in March was 37.9m³/sec at Waiwhakaiho at Vickers Rd, on 19 March.

River Water Temperature

Mean river (non-mountain) water temperatures were 16.5°C, an average of 0.3°C warmer than long-term March values. Nighttime-low water temperatures were on average 1°C warmer than historic lows, and day-time high temperatures were on average 0.3°C cooler than historic highs. The maximum river water temperature recorded in March was 25.2°C at Tangahoe below Railway Bridge on 3 March.

Air Temperature

The average air temperature for the region (excluding Te Maunga sites) was 16.1°C, which is 0.1°C cooler than long-term March averages. Low air temperatures for March were on average 0.8°C warmer than the March average for previous years. Day-time high temperatures were on average 0.6°C cooler than historic highs. The maximum air temperature recorded in March was 31.0°C at Inglewood at Oxidation Ponds on 10 March.

Soil Moisture

The average soil moisture for March across sites in Taranaki region was 18.3%. Soil moistures were on average 5.8% drier than typical March values. On average, low soil moistures were 1.7% wetter than previous lows, and the highs were on average 11% drier than previous values for March.

Soil Temperature

March soil temperatures were generally the same as long-term averages. Average nighttime low soil temperatures were 0.9°C warmer than recorded lows, and upper day-time soil temperatures were on average 0.1°C warmer than long-term March highs. The

maximum soil temperature recorded in March was 26.5°C at Kapoiaia at Lighthouse on 3 March.

Wind Speed (average and 10 minute gust)

March average wind speeds were 12.6km/hr, with average gust strength of 37.4km/hr, these were 0.2km/hr lighter, and 1.5km/hr weaker than the long-term average. Average calm weather wind speeds were 0.3km/hr stronger than recorded lows, and windy conditions were on average 3km/hr lighter than long-term March highs. The maximum wind gust recorded in March was 83.3km/hr at Hawera AWS on 5 March.

Report date: 1 April 2025.

Supply of environmental data - General terms and conditions

The enclosed information is the highest quality data the Taranaki Regional Council (the Council) is currently able to provide. Some or all of the data being provided may not yet have been audited however, and is therefore subject to change.

As we endeavour to continuously improve our products, we also reserve the right to further amend data where necessary and without notice at any time. As a result, the information supplied to you now may not be the same as that subsequently produced for you or any other requestor.

While the Council has exercised all reasonable skill and care in controlling the contents of the information, you should independently check the information provided if the accuracy of that information is important to you.

Under no circumstances will the Council, its employees or agents be liable in contract, tort or otherwise to compensate you for any loss, injury or damage (including loss of profits or consequential loss) arising directly or indirectly from the supply by the Council or its agents of inadequate, inaccurate or incorrect environmental data.

Any use of the material supplied, for example, by inclusion in a report or a media release, should be accompanied by an acknowledgment of the source of the data. We also request that any outputs generated through the use of the information provided be provided to the Council.